

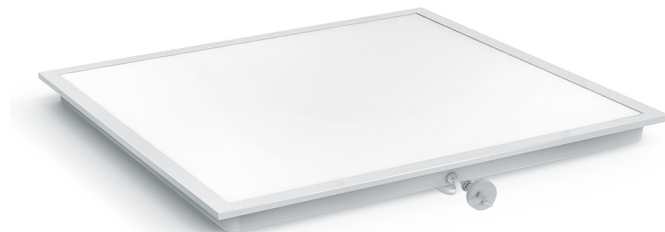
AT6023

AT6023/606/TRI

LED Backlit Panel, Tri-CCT

Features

- Easy to install
- Large range of mounting accessories



ORDERING INFORMATION

Order code	16956
Description	36W LED Backlit panel 600 x 600 - TRI-CCT
Driver Power	36 W
Driver Type	Fixed output
Item Code	AT6023/606/TRI

MECHANICAL

Adjustability	Fixed
Body Material	Steel
Diffuser Material	Polystyrene
Product Finish	Powdercoated
Fitting Colour	White
IC Rating	Non-IC
Installation Type	Recessed
IP Rating	IP20

ELECTRICAL

Electrical Rating	Class II
Input Frequency	50 Hz
Input voltage	230Vac
In Australia the Input voltage is defined as 230Vac -6%/+10%. This effectively means that the voltage range of these products are 216Vac - 253Vac or 240V +6%	
Maximum Wattage	36 W
Switch Type	Inline
Working Temp Range	-10 to 45 °C

LAMP

Macadam Steps (SDCM)	6-step MacAdam Ellipse
Beam Angle	120 °
CCT Configuration	TRI-CCT
CRI	>80
Number of Lamps	1
UGR	<22

LED LIFETIME

LED Lifetime	>54,000 hrs
This is the Reported LED Lifetime in Hours based on TM-21. Atom does not list the projected or calculated LED lifetime, which is normally longer as TM-21 Addendum B explicitly states "The Calculated and Projected Lp(Dk) are not to be reported". This Lifetime refers to the life of a single LED however the system life is longer since the probability and binomial distribution of all LEDs in the system means that the average led is performing above the specification and compensates for the LEDs falling below.	
LED Lifetime Rating	L70 B10
TM-21 Test Hours	9000 hrs

COLOUR TEMPERATURE

36 Watts

Warm White (3000 K)	3385 lm
Cool White (4000 K)	3620 lm
DayLight (6500 K)	3440 lm

DRIVER

Dimmable	No
Driver Included	Yes
Integrated Driver	No
Driver Mode	Constant Current
Driver Type	Fixed output
Wiring Type	Re-wireable Flex & Plug (2 pin)

COMPLIANCE

Daily Use	12 hrs
The Daily Use is the recommended time required to meet the product's design life. Installations can exceed this time, however the product design life will be reduced proportionally.	
Standards	AS/NZS 60598.1 AS/NZS 60598.2.2 AS/NZS 61347.1 AS/NZS 61347.2.13 AS CISPR 15

WARRANTY

Commercial Use Warranty	3 RTB (Total 3 Years)
Domestic Use Warranty	3 (Yr) RTB
Operational Lifetime	50000 hrs
VIP Warranty	2 Onsite, 3 RTB (Total 5 Years)

VIP warranty is available to registered users and is subjected to additional terms and conditions.

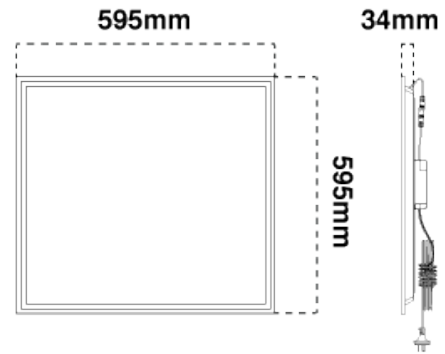
Warranty Operating Hours	15000 hrs
This product is provided with a warranty up until the stated warranty period or until the stated warranty operating hours has been reached (whichever occurs first).	

DIMENSIONS

Product Height	34 mm
Product Length	595 mm
Product Width	595 mm

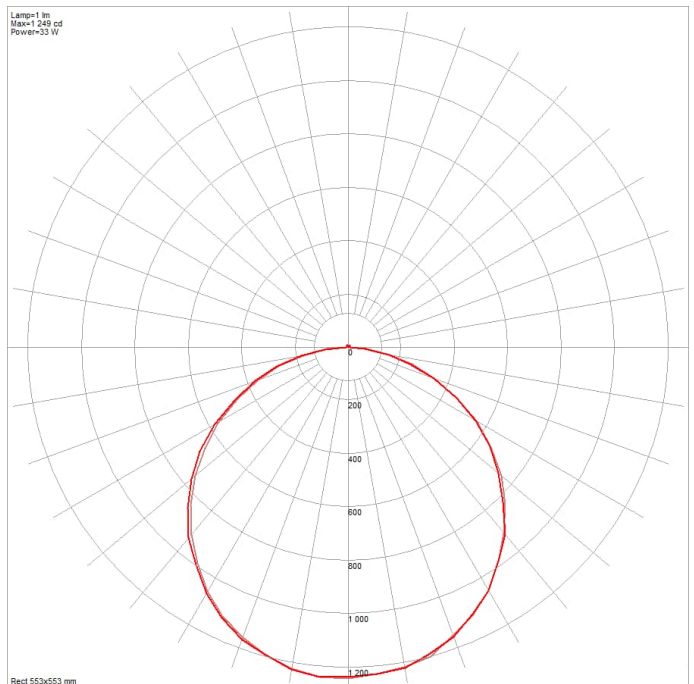
LINE DRAWINGS

AT6023/606

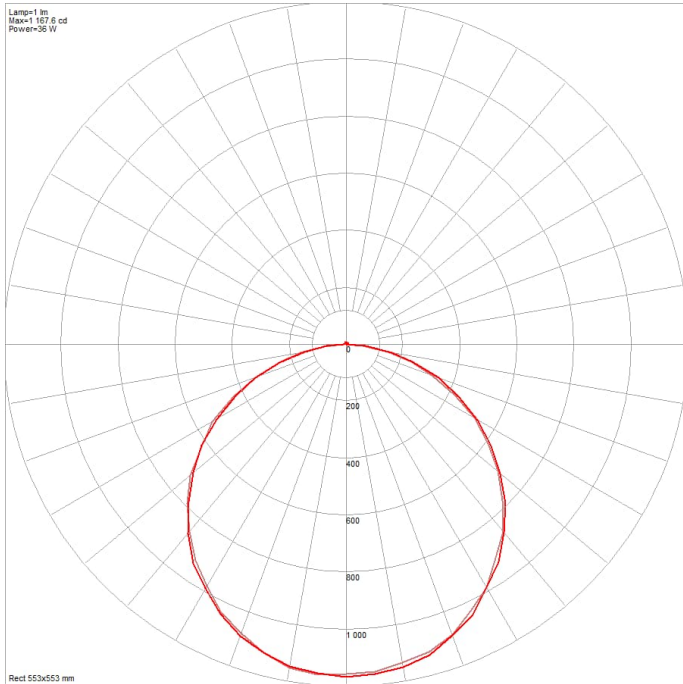


PHOTOMETRICS

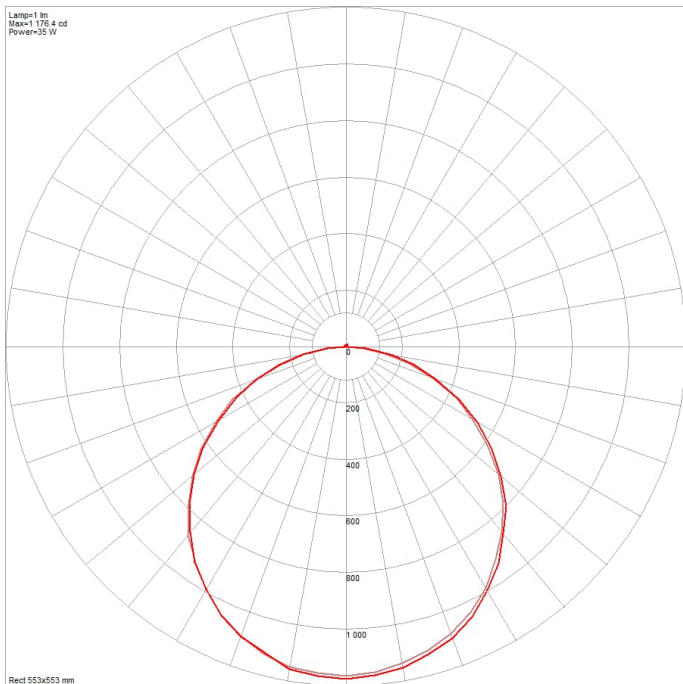
AT6023/606 4000K



AT6023/606 6500K



AT6023/606 3000K



AT6023

AT6023/306/TRI

LED Backlit Panel, Tri-CCT

Features

- Easy to install
- Large range of mounting accessories



ORDERING INFORMATION

Order code	16955
Description	18W LED Backlit panel 300 x 600 - TRI-CCT
Driver Power	18 W
Driver Type	Fixed output
Item Code	AT6023/306/TRI

MECHANICAL

Adjustability	Fixed
Body Material	Steel
Diffuser Material	Polystyrene
Product Finish	Powdercoated
Fitting Colour	White
IC Rating	Non-IC
Installation Type	Recessed
IP Rating	IP20

ELECTRICAL

Electrical Rating	Class II
Input Frequency	50 Hz
Input voltage	230Vac
In Australia the Input voltage is defined as 230Vac -6%/+10%. This effectively means that the voltage range of these products are 216Vac - 253Vac or 240V +6%	
Maximum Wattage	18 W
Switch Type	Inline
Working Temp Range	-10 to 45 °C

LAMP

Macadam Steps (SDCM)	6-step MacAdam Ellipse
Beam Angle	120 °
CCT Configuration	TRI-CCT
CRI	>80
Number of Lamps	1
UGR	<22

LED LIFETIME

LED Lifetime	>54,000 hrs
This is the Reported LED Lifetime in Hours based on TM-21. Atom does not list the projected or calculated LED lifetime, which is normally longer as TM-21 Addendum B explicitly states "The Calculated and Projected Lp(Dk) are not to be reported". This Lifetime refers to the life of a single LED however the system life is longer since the probability and binomial distribution of all LEDs in the system means that the average led is performing above the specification and compensates for the LEDs falling below.	
LED Lifetime Rating	L70 B10
TM-21 Test Hours	9000 hrs

COLOUR TEMPERATURE

20 Watts

Warm White (3000 K)	1930 lm
Cool White (4000 K)	2090 lm
DayLight (6500 K)	1970 lm

DRIVER

Dimmable	No
Driver Included	Yes
Integrated Driver	No
Driver Mode	Constant Current
Driver Type	Fixed output
Wiring Type	Re-wireable Flex & Plug (2 pin)

COMPLIANCE

Daily Use	12 hrs
The Daily Use is the recommended time required to meet the product's design life. Installations can exceed this time, however the product design life will be reduced proportionally.	
Standards	AS/NZS 60598.1 AS/NZS 60598.2.2 AS/NZS 61347.1 AS/NZS 61347.2.13 AS CISPR 15

WARRANTY

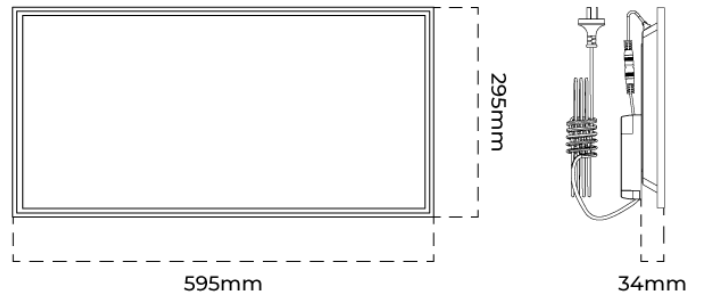
Commercial Use Warranty	3 RTB (Total 3 Years)
Domestic Use Warranty	3 (Yr) RTB
Operational Lifetime	50000 hrs
VIP Warranty	2 Onsite, 3 RTB (Total 5 Years)
VIP warranty is available to registered users and is subjected to additional terms and conditions.	
Warranty Operating Hours	15000 hrs
This product is provided with a warranty up until the stated warranty period or until the stated warranty operating hours has been reached (whichever occurs first).	

DIMENSIONS

Product Height	34 mm
Product Length	595 mm
Product Width	295 mm

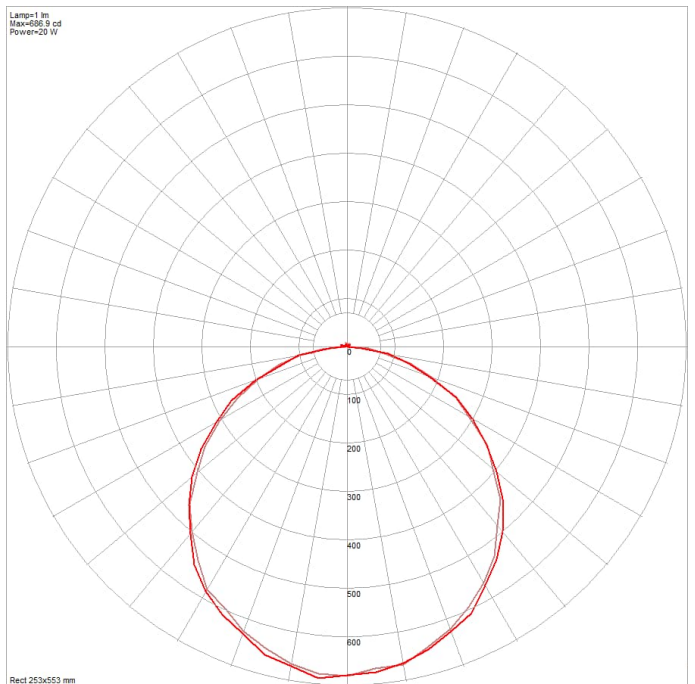
LINE DRAWINGS

AT6023/306

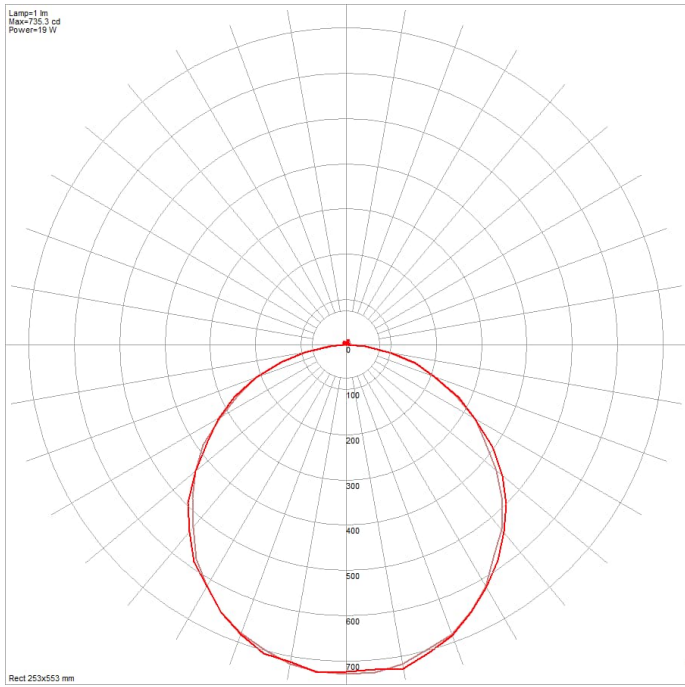


PHOTOMETRICS

AT6023/306 3000K



AT6023/306 4000K



AT6023/306 6500K

