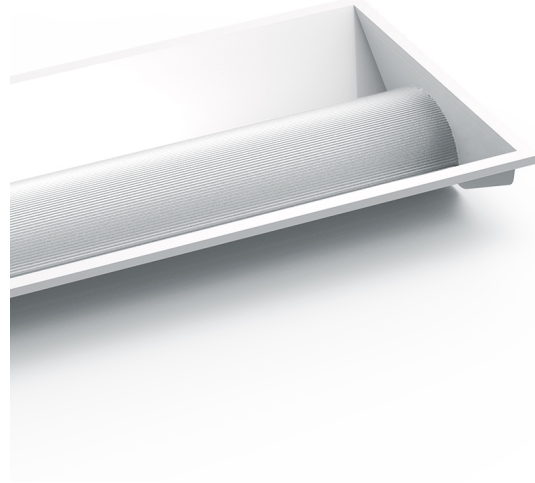


CURVE ADV CONCEALED AIR

Curve Advanced Concealed Air Troffer, CRI >80

FEATURES

- Low-glare curved reflector and even light distribution
- Concealed air louvers for air handling applications
- Same form factor as Curve Advanced and can be used interchangeably
- External LED driver for easy maintenance and installation
- Supplied with a choice of different softwiring and hardwiring options
- High efficiency design with >150Lm/W output
- Excellent L90B10 lifetime for energy efficient lighting designs
- Flicker free DALI-2 certified LED driver giving excellent compatibility



| ORDERING INFORMATION | |
|--|---|
| Order code | 13804 |
| Description | 17W Curve Adv Concealed Air Troffer 300x1200mm - 4000K - DALI |
| Driver Type | DALI DT6 LED Driver |
| DALI DT6 ~ Includes DALI-2 Driver with full support for DT6 allowing flicker free dimming with compliant DALI-2 Application controllers. | |
| Item Code | EV-CURVE-ADV-AIR-312-17W-DA |

| MECHANICAL | |
|-------------------|-------------------|
| Body Material | Cold rolled steel |
| Diffuser Material | PMMA |
| Product Finish | Powder coated |
| Fitting Colour | White |
| Installation Type | Recessed |
| IP Rating | IP40 |

| ELECTRICAL | |
|---|----------|
| Electrical Rating | Class II |
| Input Current | 0.09 A |
| Input Frequency | 50 Hz |
| Input voltage | 230Vac |
| In Australia the Input voltage is defined as 230Vac -6%/+10%. This effectively means that the voltage range of these products are 216Vac - 253Vac or 240V +6% | |
| Maximum Wattage | 15 W |

| | |
|--------------------|------------|
| Power Factor | 0.95 |
| Switch Type | Via DALI |
| Working Temp Range | 0 to 40 °C |

| LAMP | |
|---|------------------------|
| Macadam Steps (SDCM) | 4-step MacAdam Ellipse |
| CCT Configuration | Single |
| CRI | >80 |
| Lamp/LED Current | 450 mA |
| Lamp/LED voltage | 36 V |
| System Efficiency | 150 lm/W |
| UGR | <19 |
| UGR (Unified Glare Rating) is reported as per AS/NZS 1680.2 using the following design parameters; room reflectance 0.7/0.5/0.2 (C/W/F), ceiling height 2.7m, LLF=0.8 (Nominal) from the corrected UGR table. | |

| LED LIFETIME | | |
|---|-------------|-------------|
| LED Lifetime | >54,000 hrs | |
| This is the Reported LED Lifetime in Hours based on TM-21. Ektor does not list the projected or calculated LED lifetime, which is normally longer as TM-21 Addendum B explicitly states "The Calculated and Projected Lp(Dk) are not to be reported". This Lifetime refers to the life of a single LED however the system life is longer since the probability and binomial distribution of all LEDs in the system means that the average led is performing above the specification and compensates for the LEDs falling below. | | |
| Ambient Temp (°C) | 25 °C | 40 °C |
| L90B10 | 53,000 hrs | 53,000 hrs |
| L80B10 | >54,000 hrs | >54,000 hrs |



L70B10 >54,000 hrs >54,000 hrs

This rating defines the performance of the led within its lifetime. L relates to lumen depreciation, where the proceeding number gives the resultant lumen output at the end of it reported lifetime. L70, would mean 30% lumen depreciation which means 70% of its initial output and is tested accordingly to TM-21. The B part refers to failures, which can be define as the percentage of LEDs which fall below the L value in the projected lifetime. A value of B10 refers to 10% failure and a value of B50 refers to 50% failure. After the defined lifetime, the system will reach the defined lumen depreciation and the average led failures is defined by the B rating. The B rating is defined in and tested to IEC62717.

TM-21 Test Hours 9000 hrs

COLOUR TEMPERATURE

CCT 4000 K

Luminaire Lumens 2550 lm

All photometric data has a tolerance of $\pm 10\%$. Luminaire lumens refers to the exit lumens or delivered lumens from the luminaire.

DRIVER

Dimmable Yes

Driver Included Yes

Integrated Driver No

Driver Mode Constant Current

Driver Type DALI DT6 LED Driver

DALI DT6 ~ Includes DALI-2 Driver with full support for DT6 allowing flicker free dimming with compliant DALI-2 Application controllers.

Wiring Type Re-wireable terminal block (4 pin)

COMPLIANCE

Product Design Life 8 years

The product design life relates to the total product life which includes LEDs, drivers and the enclosure. This is different to the LED lifetime which only refers to the economical lifetime of the LEDs at which time the lumen output has dropped below the L Value. The product design life is calculated at the maximum ambient or working temperature of the product and takes into account the Daily Use.

Daily Use 16 hrs

The Daily Use is the recommended time required to meet the product's design life. Installations can exceed this time, however the product design life will be reduced proportionally.

Standards
 AS/NZS 60598.1
 AS/NZS 60598.2.2
 AS/NZS 61347.1
 AS/NZS 61347.2.13
 IEC/TR 62778
 IEC 62031
 AS CISPR 15
 IEC 62386-102
 IEC 62386-207

WARRANTY

Commercial Use Warranty 5 RTB (Total 5 Years)

Warranty Operating Hours 30000 hrs

This product is provided with a warranty up until the stated warranty period or until the stated warranty operating hours has been reached (whichever occurs first).

DIMENSIONS

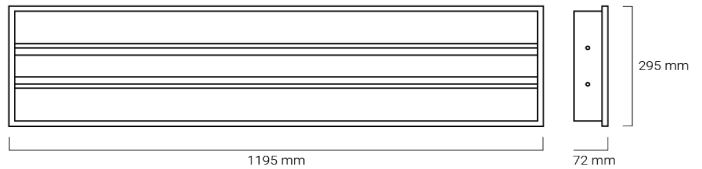
Product Height 72 mm

Product Length 1195 mm

Product Width 295 mm

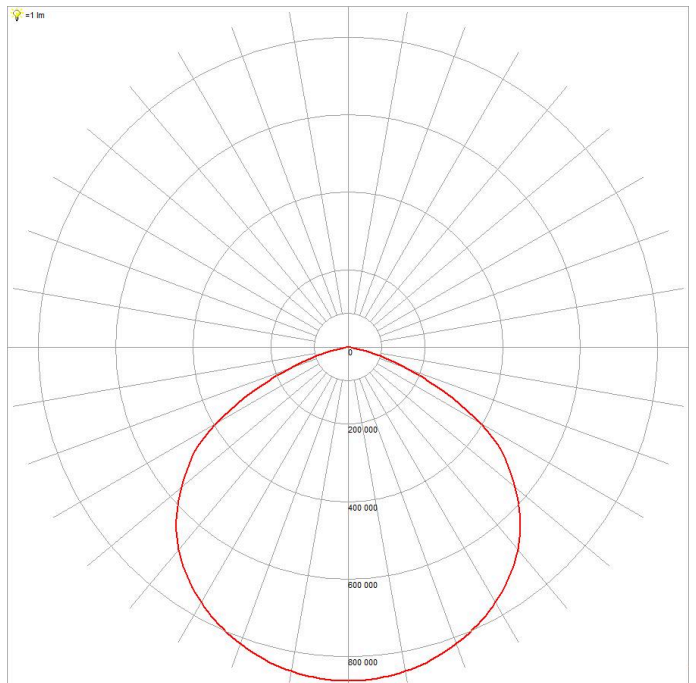
LINE DRAWINGS

EV/CURVE/ADV/312



PHOTOMETRICS

EV/CURVE/ADV/AIR/312/17W

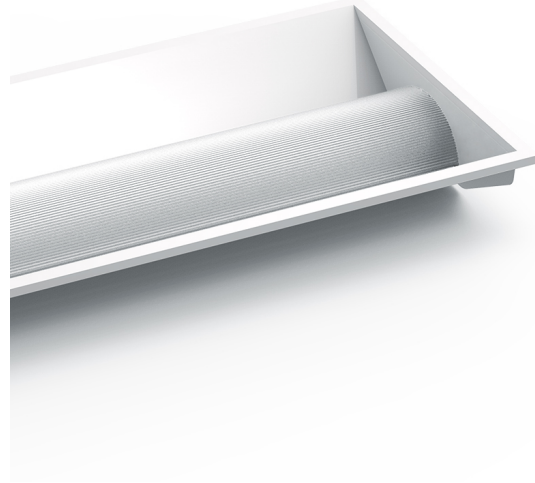


CURVE ADV CONCEALED AIR

Curve Advanced Concealed Air Troffer, CRI >80

FEATURES

- Low-glare curved reflector and even light distribution
- Concealed air louvers for air handling applications
- Same form factor as Curve Advanced and can be used interchangeably
- External LED driver for easy maintenance and installation
- Supplied with a choice of different softwiring and hardwiring options
- High efficiency design with >150Lm/W output
- Excellent L90B10 lifetime for energy efficient lighting designs
- Flicker free DALI-2 certified LED driver giving excellent compatibility



ORDERING INFORMATION

| | |
|--|--|
| Order code | 13805 |
| Description | 17W Curve Adv Concealed Air Troffer 300x1200mm - 4000K - DALI - CMS Plug |
| Driver Type | DALI DT6 LED Driver |
| DALI DT6 ~ Includes DALI-2 Driver with full support for DT6 allowing flicker free dimming with compliant DALI-2 Application controllers. | |
| Item Code | EV-CURVE-ADV-AIR-312-17W-DC |

MECHANICAL

| | |
|--------------------------|-------------------|
| Body Material | Cold rolled steel |
| Diffuser Material | PMMA |
| Product Finish | Powder coated |
| Fitting Colour | White |
| Installation Type | Recessed |
| IP Rating | IP40 |

ELECTRICAL

| | |
|---|----------|
| Electrical Rating | Class II |
| Input Current | 0.09 A |
| Input Frequency | 50 Hz |
| Input voltage | 230Vac |
| In Australia the Input voltage is defined as 230Vac -6%/+10%. This effectively means that the voltage range of these products are 216Vac - 253Vac or 240V +6% | |
| Maximum Wattage | 15 W |

| | |
|---------------------------|------------|
| Power Factor | 0.95 |
| Switch Type | Via DALI |
| Working Temp Range | 0 to 40 °C |

LAMP

| | |
|-----------------------------|------------------------|
| Macadam Steps (SDCM) | 4-step MacAdam Ellipse |
| CCT Configuration | Single |
| CRI | >80 |
| Lamp/LED Current | 450 mA |
| Lamp/LED voltage | 36 V |
| System Efficiency | 150 lm/W |
| UGR | <19 |

UGR (Unified Glare Rating) is reported as per AS/NZS 1680.2 using the following design parameters; room reflectance 0.7/0.5/0.2 (C/W/F), ceiling height 2.7m, LLF=0.8 (Nominal) from the corrected UGR table.

LED LIFETIME

| | | |
|---|-------------|-------------|
| LED Lifetime | >54,000 hrs | |
| This is the Reported LED Lifetime in Hours based on TM-21. Ektor does not list the projected or calculated LED lifetime, which is normally longer as TM-21 Addendum B explicitly states "The Calculated and Projected Lp(Dk) are not to be reported". This Lifetime refers to the life of a single LED however the system life is longer since the probability and binomial distribution of all LEDs in the system means that the average led is performing above the specification and compensates for the LEDs falling below. | | |
| Ambient Temp (°C) | 25 °C | 40 °C |
| L90B10 | 53,000 hrs | 53,000 hrs |
| L80B10 | >54,000 hrs | >54,000 hrs |

L70B10 >54,000 hrs >54,000 hrs

This rating defines the performance of the led within its lifetime. L relates to lumen depreciation, where the proceeding number gives the resultant lumen output at the end of it reported lifetime. L70, would mean 30% lumen depreciation which means 70% of its initial output and is tested accordingly to TM-21. The B part refers to failures, which can be define as the percentage of LEDs which fall below the L value in the projected lifetime. A value of B10 refers to 10% failure and a value of B50 refers to 50% failure. After the defined lifetime, the system will reach the defined lumen depreciation and the average led failures is defined by the B rating. The B rating is defined in and tested to IEC62717.

TM-21 Test Hours 9000 hrs

COLOUR TEMPERATURE

CCT 4000 K

Luminaire Lumens 2550 lm

All photometric data has a tolerance of $\pm 10\%$. Luminaire lumens refers to the exit lumens or delivered lumens from the luminaire.

DRIVER

Dimmable Yes

Driver Included Yes

Integrated Driver No

Driver Mode Constant Current

Driver Type DALI DT6 LED Driver

DALI DT6 ~ Includes DALI-2 Driver with full support for DT6 allowing flicker free dimming with compliant DALI-2 Application controllers.

Flex & Plug or Lead Length 2400 mm

Wiring Type CMS Plug (5 pin)

CMS ~ Supplied with a CMS Electracom- 5 pin plug to suit QF series wiring, model number QFP3AT

COMPLIANCE

Product Design Life 8 years

The product design life relates to the total product life which includes LEDs, drivers and the enclosure. This is different to the LED lifetime which only refers to the economical lifetime of the LEDs at which time the lumen output has dropped below the L Value. The product design life is calculated at the maximum ambient or working temperature of the product and takes into account the Daily Use.

Daily Use 16 hrs

The Daily Use is the recommended time required to meet the product's design life. Installations can exceed this time, however the product design life will be reduced proportionally.

Standards

- AS/NZS 60598.1
- AS/NZS 60598.2.2
- AS/NZS 61347.1
- AS/NZS 61347.2.13
- IEC/TR 62778
- IEC 62031
- AS/NZS 61535.1
- AS CISPR 15
- IEC 62386-102
- IEC 62386-207

WARRANTY

Commercial Use Warranty 5 RTB (Total 5 Years)

Warranty Operating Hours 30000 hrs

This product is provided with a warranty up until the stated warranty period or until the stated warranty operating hours has been reached (whichever occurs first).

DIMENSIONS

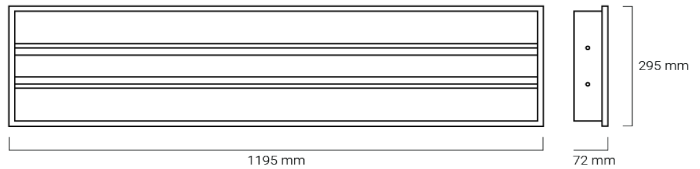
Product Height 72 mm

Product Length 1195 mm

Product Width 295 mm

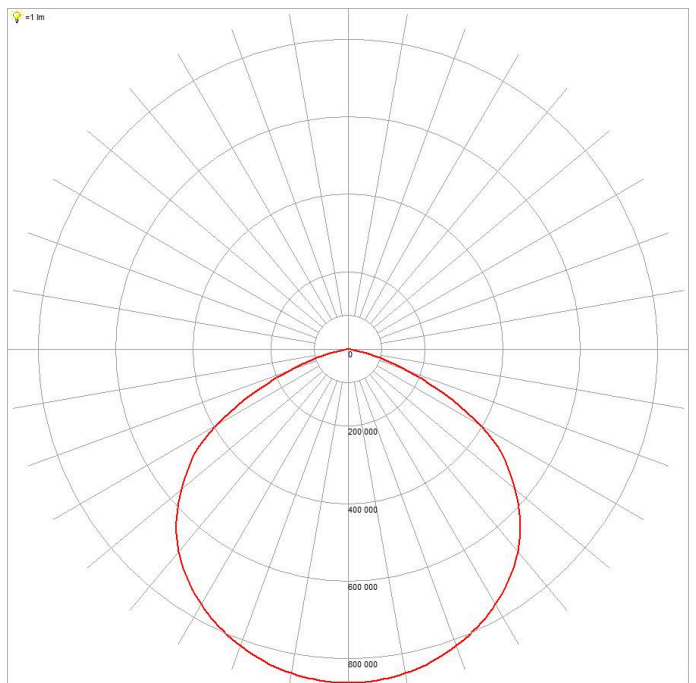
LINE DRAWINGS

EV/CURVE/ADV/312



PHOTOMETRICS

EV/CURVE/ADV/AIR/312/17W

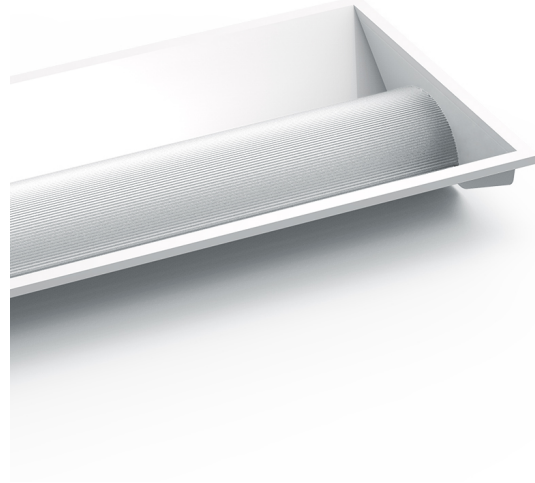


CURVE ADV CONCEALED AIR

Curve Advanced Concealed Air Troffer, CRI >80

FEATURES

- Low-glare curved reflector and even light distribution
- Concealed air louvers for air handling applications
- Same form factor as Curve Advanced and can be used interchangeably
- External LED driver for easy maintenance and installation
- Supplied with a choice of different softwiring and hardwiring options
- High efficiency design with >150Lm/W output
- Excellent L90B10 lifetime for energy efficient lighting designs
- Flicker free DALI-2 certified LED driver giving excellent compatibility



| ORDERING INFORMATION | |
|--|--|
| Order code | 13806 |
| Description | 17W Curve Adv Concealed Air Troffer 300x1200mm - 4000K - DALI - Wire by Click Plug |
| Driver Type | DALI DT6 LED Driver |
| DALI DT6 ~ Includes DALI-2 Driver with full support for DT6 allowing flicker free dimming with compliant DALI-2 Application controllers. | |
| Item Code | EV-CURVE-ADV-AIR-312-17W-DW |

| MECHANICAL | |
|-------------------|-------------------|
| Body Material | Cold rolled steel |
| Diffuser Material | PMMA |
| Product Finish | Powder coated |
| Fitting Colour | White |
| Installation Type | Recessed |
| IP Rating | IP40 |

| ELECTRICAL | |
|---|----------|
| Electrical Rating | Class II |
| Input Current | 0.09 A |
| Input Frequency | 50 Hz |
| Input voltage | 230Vac |
| In Australia the Input voltage is defined as 230Vac -6%/+10%. This effectively means that the voltage range of these products are 216Vac - 253Vac or 240V +6% | |

| | |
|--------------------|------------|
| Maximum Wattage | 15 W |
| Power Factor | 0.95 |
| Switch Type | Via DALI |
| Working Temp Range | 0 to 40 °C |

| LAMP | |
|---|------------------------|
| Macadam Steps (SDCM) | 4-step MacAdam Ellipse |
| CCT Configuration | Single |
| CRI | >80 |
| Lamp/LED Current | 450 mA |
| Lamp/LED voltage | 36 V |
| System Efficiency | 150 lm/W |
| UGR | <19 |
| UGR (Unified Glare Rating) is reported as per AS/NZS 1680.2 using the following design parameters; room reflectance 0.7/0.5/0.2 (C/W/F), ceiling height 2.7m, LLF=0.8 (Nominal) from the corrected UGR table. | |

| LED LIFETIME | |
|---|----------------------------|
| LED Lifetime | >54,000 hrs |
| This is the Reported LED Lifetime in Hours based on TM-21. Ektor does not list the projected or calculated LED lifetime, which is normally longer as TM-21 Addendum B explicitly states "The Calculated and Projected Lp(Dk) are not to be reported". This Lifetime refers to the life of a single LED however the system life is longer since the probability and binomial distribution of all LEDs in the system means that the average led is performing above the specification and compensates for the LEDs falling below. | |
| Ambient Temp (°C) | 25 °C 40 °C |
| L90B10 | 53,000 hrs 53,000 hrs |

L80B10 >54,000 hrs >54,000 hrs

L70B10 >54,000 hrs >54,000 hrs

This rating defines the performance of the led within its lifetime. L relates to lumen depreciation, where the proceeding number gives the resultant lumen output at the end of it reported lifetime. L70, would mean 70% lumen depreciation which means 70% of its initial output and is tested accordingly to TM-21. The B part refers to failures, which can be define as the percentage of LEDs which fall below the L value in the projected lifetime. A value of B10 refers to 10% failure and a value of B50 refers to 50% failure. After the defined lifetime, the system will reach the defined lumen depreciation and the average led failures is defined by the B rating. The B rating is defined in and tested to IEC62717.

TM-21 Test Hours 9000 hrs

COLOUR TEMPERATURE

CCT 4000 K

Luminaire Lumens 2550 lm

All photometric data has a tolerance of $\pm 10\%$. Luminaire lumens refers to the exit lumens or delivered lumens from the luminaire.

DRIVER

Dimmable Yes

Driver Included Yes

Integrated Driver No

Driver Mode Constant Current

Driver Type DALI DT6 LED Driver

DALI DT6 ~ Includes DALI-2 Driver with full support for DT6 allowing flicker free dimming with compliant DALI-2 Application controllers.

Flex & Plug or Lead Length 2400 mm

Wiring Type WBC Plug (5 pin)

WBC ~ Supplied with a Wire by click- 5 pin plug, model number LA1025/5

COMPLIANCE

Product Design Life 8 years

The product design life relates to the total product life which includes LEDs, drivers and the enclosure. This is different to the LED lifetime which only refers to the economical lifetime of the LEDs at which time the lumen output has dropped below the L Value. The product design life is calculated at the maximum ambient or working temperature of the product and takes into account the Daily Use.

Daily Use 16 hrs

The Daily Use is the recommended time required to meet the product's design life. Installations can exceed this time, however the product design life will be reduced proportionally.

Standards AS/NZS 60598.1
AS/NZS 60598.2.2
AS/NZS 61347.1
AS/NZS 61347.2.13
IEC/TR 62778
IEC 62031
AS/NZS 61535.1
AS CISPR 15
IEC 62386-102
IEC 62386-207

WARRANTY

Commercial Use Warranty 5 RTB (Total 5 Years)

Warranty Operating Hours 30000 hrs

This product is provided with a warranty up until the stated warranty period or until the stated warranty operating hours has been reached (whichever occurs first).

DIMENSIONS

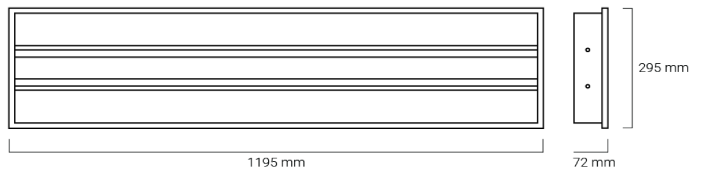
Product Height 72 mm

Product Length 1195 mm

Product Width 295 mm

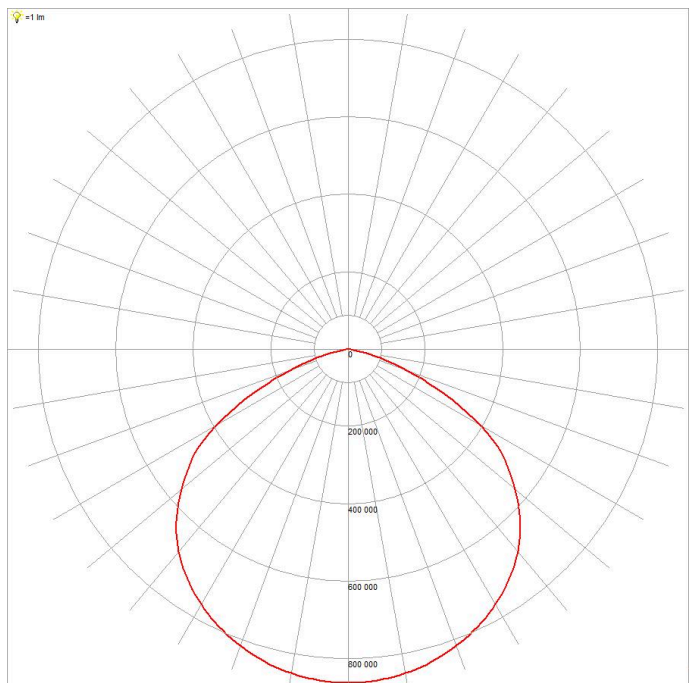
LINE DRAWINGS

EV/CURVE/ADV/312



PHOTOMETRICS

EV/CURVE/ADV/AIR/312/17W

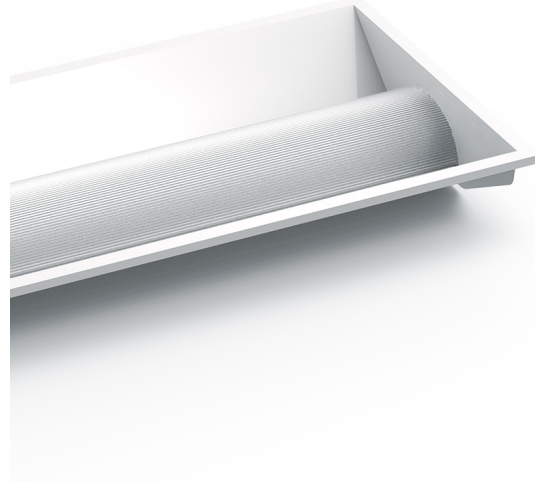


CURVE ADV CONCEALED AIR

Curve Advanced Concealed Air Troffer, CRI >80

FEATURES

- Low-glare curved reflector and even light distribution
- Concealed air louvers for air handling applications
- Same form factor as Curve Advanced and can be used interchangeably
- External LED driver for easy maintenance and installation
- Supplied with a choice of different softwiring and hardwiring options
- High efficiency design with >150Lm/W output
- Excellent L90B10 lifetime for energy efficient lighting designs
- Flicker free DALI-2 certified LED driver giving excellent compatibility



| ORDERING INFORMATION | |
|--|---|
| Order code | 13704 |
| Description | 19W Curve Adv Concealed Air Troffer 300x1200mm - 4000K - DALI |
| Driver Type | DALI DT6 LED Driver |
| DALI DT6 ~ Includes DALI-2 Driver with full support for DT6 allowing flicker free dimming with compliant DALI-2 Application controllers. | |
| Item Code | EV-CURVE-ADV-AIR-312-19W-DA |

| MECHANICAL | |
|-------------------|-------------------|
| Body Material | Cold rolled steel |
| Diffuser Material | PMMA |
| Product Finish | Powder coated |
| Fitting Colour | White |
| Installation Type | Recessed |
| IP Rating | IP40 |

| ELECTRICAL | |
|---|----------|
| Electrical Rating | Class II |
| Input Current | 0.1 A |
| Input Frequency | 50 Hz |
| Input voltage | 230Vac |
| In Australia the Input voltage is defined as 230Vac -6%/+10%. This effectively means that the voltage range of these products are 216Vac - 253Vac or 240V +6% | |
| Maximum Wattage | 19 W |

| | |
|--------------------|------------|
| Power Factor | 0.95 |
| Switch Type | Via DALI |
| Working Temp Range | 0 to 40 °C |

| LAMP | |
|---|------------------------|
| Macadam Steps (SDCM) | 4-step MacAdam Ellipse |
| CCT Configuration | Single |
| CRI | >80 |
| Lamp/LED Current | 500 mA |
| Lamp/LED voltage | 36 V |
| System Efficiency | 153 lm/W |
| UGR | <19 |
| UGR (Unified Glare Rating) is reported as per AS/NZS 1680.2 using the following design parameters; room reflectance 0.7/0.5/0.2 (C/W/F), ceiling height 2.7m, LLF=0.8 (Nominal) from the corrected UGR table. | |

| LED LIFETIME | | |
|---|-------------|-------------|
| LED Lifetime | >54,000 hrs | |
| This is the Reported LED Lifetime in Hours based on TM-21. Ektor does not list the projected or calculated LED lifetime, which is normally longer as TM-21 Addendum B explicitly states "The Calculated and Projected Lp(Dk) are not to be reported". This Lifetime refers to the life of a single LED however the system life is longer since the probability and binomial distribution of all LEDs in the system means that the average led is performing above the specification and compensates for the LEDs falling below. | | |
| Ambient Temp (°C) | 25 °C | 40 °C |
| L90B10 | 53,000 hrs | 53,000 hrs |
| L80B10 | >54,000 hrs | >54,000 hrs |

L70B10 >54,000 hrs >54,000 hrs

This rating defines the performance of the led within its lifetime. L relates to lumen depreciation, where the proceeding number gives the resultant lumen output at the end of it reported lifetime. L70, would mean 30% lumen depreciation which means 70% of its initial output and is tested accordingly to TM-21. The B part refers to failures, which can be define as the percentage of LEDs which fall below the L value in the projected lifetime. A value of B10 refers to 10% failure and a value of B50 refers to 50% failure. After the defined lifetime, the system will reach the defined lumen depreciation and the average led failures is defined by the B rating. The B rating is defined in and tested to IEC62717.

TM-21 Test Hours 9000 hrs

COLOUR TEMPERATURE

CCT 4000 K

Luminaire Lumens 2900 lm

All photometric data has a tolerance of $\pm 10\%$. Luminaire lumens refers to the exit lumens or delivered lumens from the luminaire.

DRIVER

Dimmable Yes

Driver Included Yes

Integrated Driver No

Driver Mode Constant Current

Driver Type DALI DT6 LED Driver

DALI DT6 ~ Includes DALI-2 Driver with full support for DT6 allowing flicker free dimming with compliant DALI-2 Application controllers.

Wiring Type Re-wireable terminal block (4 pin)

COMPLIANCE

Product Design Life 8 years

The product design life relates to the total product life which includes LEDs, drivers and the enclosure. This is different to the LED lifetime which only refers to the economical lifetime of the LEDs at which time the lumen output has dropped below the L Value. The product design life is calculated at the maximum ambient or working temperature of the product and takes into account the Daily Use.

Daily Use 16 hrs

The Daily Use is the recommended time required to meet the product's design life. Installations can exceed this time, however the product design life will be reduced proportionally.

Standards

- AS/NZS 60598.1
- AS/NZS 60598.2.2
- AS/NZS 61347.1
- AS/NZS 61347.2.13
- IEC/TR 62778
- IEC 62031
- AS CISPR 15
- IEC 62386-102
- IEC 62386-207

WARRANTY

Commercial Use Warranty 5 RTB (Total 5 Years)

Warranty Operating Hours 30000 hrs

This product is provided with a warranty up until the stated warranty period or until the stated warranty operating hours has been reached (whichever occurs first).

DIMENSIONS

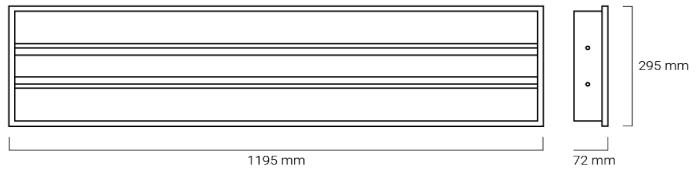
Product Height 72 mm

Product Length 1195 mm

Product Width 295 mm

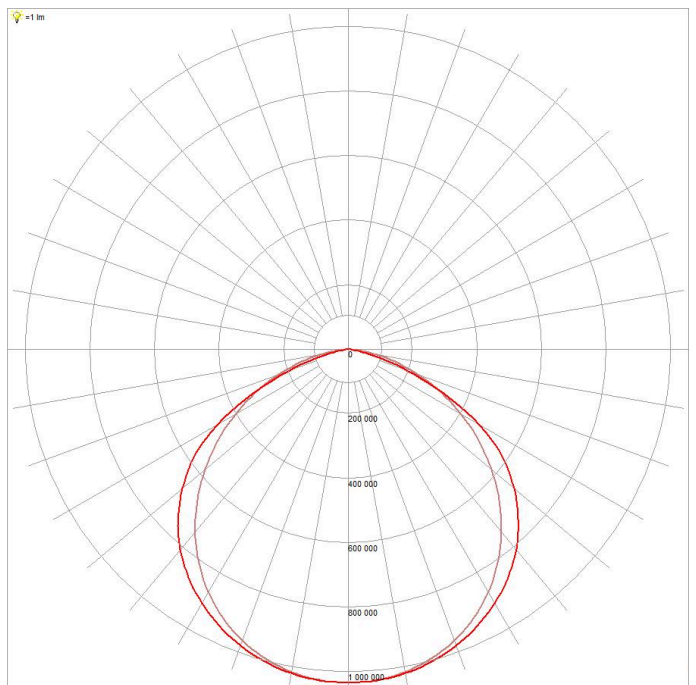
LINE DRAWINGS

EV/CURVE/ADV/312



PHOTOMETRICS

EV/CURVE/ADV/AIR/312/19W

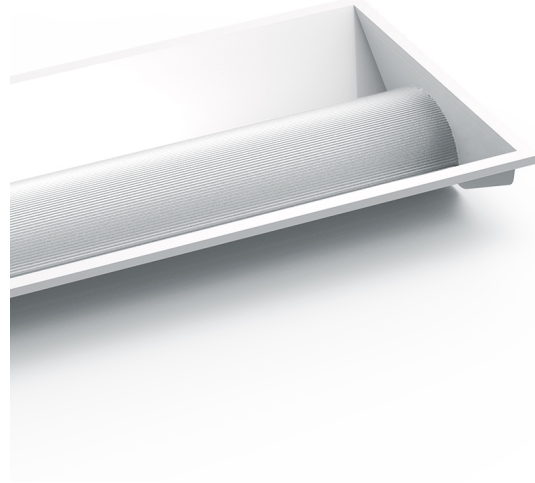


CURVE ADV CONCEALED AIR

Curve Advanced Concealed Air Troffer, CRI >80

FEATURES

- Low-glare curved reflector and even light distribution
- Concealed air louvers for air handling applications
- Same form factor as Curve Advanced and can be used interchangeably
- External LED driver for easy maintenance and installation
- Supplied with a choice of different softwiring and hardwiring options
- High efficiency design with >150Lm/W output
- Excellent L90B10 lifetime for energy efficient lighting designs
- Flicker free DALI-2 certified LED driver giving excellent compatibility



| ORDERING INFORMATION | |
|--|--|
| Order code | 13705 |
| Description | 19W Curve Adv Concealed Air Troffer 300x1200mm - 4000K - DALI - CMS Plug |
| Driver Type | DALI DT6 LED Driver |
| DALI DT6 ~ Includes DALI-2 Driver with full support for DT6 allowing flicker free dimming with compliant DALI-2 Application controllers. | |
| Item Code | EV-CURVE-ADV-AIR-312-19W-DC |

| MECHANICAL | |
|-------------------|-------------------|
| Body Material | Cold rolled steel |
| Diffuser Material | PMMA |
| Product Finish | Powder coated |
| Fitting Colour | White |
| Installation Type | Recessed |
| IP Rating | IP40 |

| ELECTRICAL | |
|---|----------|
| Electrical Rating | Class II |
| Input Current | 0.1 A |
| Input Frequency | 50 Hz |
| Input voltage | 230Vac |
| In Australia the Input voltage is defined as 230Vac -6%/+10%. This effectively means that the voltage range of these products are 216Vac - 253Vac or 240V +6% | |
| Maximum Wattage | 19 W |

| | |
|--------------------|------------|
| Power Factor | 0.95 |
| Switch Type | Via DALI |
| Working Temp Range | 0 to 40 °C |

| LAMP | |
|----------------------|------------------------|
| Macadam Steps (SDCM) | 4-step MacAdam Ellipse |
| CCT Configuration | Single |
| CRI | >80 |
| Lamp/LED Current | 500 mA |
| Lamp/LED voltage | 36 V |
| System Efficiency | 153 lm/W |
| UGR | <19 |

UGR (Unified Glare Rating) is reported as per AS/NZS 1680.2 using the following design parameters; room reflectance 0.7/0.5/0.2 (C/W/F), ceiling height 2.7m, LLF=0.8 (Nominal) from the corrected UGR table.

| LED LIFETIME | | |
|---|-------------|-------------|
| LED Lifetime | >54,000 hrs | |
| This is the Reported LED Lifetime in Hours based on TM-21. Ektor does not list the projected or calculated LED lifetime, which is normally longer as TM-21 Addendum B explicitly states "The Calculated and Projected Lp(Dk) are not to be reported". This Lifetime refers to the life of a single LED however the system life is longer since the probability and binomial distribution of all LEDs in the system means that the average led is performing above the specification and compensates for the LEDs falling below. | | |
| Ambient Temp (°C) | 25 °C | 40 °C |
| L90B10 | 53,000 hrs | 53,000 hrs |
| L80B10 | >54,000 hrs | >54,000 hrs |



L70B10 >54,000 hrs >54,000 hrs

This rating defines the performance of the led within its lifetime. L relates to lumen depreciation, where the proceeding number gives the resultant lumen output at the end of it reported lifetime. L70, would mean 30% lumen depreciation which means 70% of its initial output and is tested accordingly to TM-21. The B part refers to failures, which can be define as the percentage of LEDs which fall below the L value in the projected lifetime. A value of B10 refers to 10% failure and a value of B50 refers to 50% failure. After the defined lifetime, the system will reach the defined lumen depreciation and the average led failures is defined by the B rating. The B rating is defined in and tested to IEC62717.

TM-21 Test Hours 9000 hrs

COLOUR TEMPERATURE

CCT 4000 K

Luminaire Lumens 2900 lm

All photometric data has a tolerance of $\pm 10\%$. Luminaire lumens refers to the exit lumens or delivered lumens from the luminaire.

DRIVER

Dimmable Yes

Driver Included Yes

Integrated Driver No

Driver Mode Constant Current

Driver Type DALI DT6 LED Driver

DALI DT6 ~ Includes DALI-2 Driver with full support for DT6 allowing flicker free dimming with compliant DALI-2 Application controllers.

Flex & Plug or Lead Length 2400 mm

Wiring Type CMS Plug (5 pin)

CMS ~ Supplied with a CMS Electracom- 5 pin plug to suit QF series wiring, model number QFP3AT

COMPLIANCE

Product Design Life 8 years

The product design life relates to the total product life which includes LEDs, drivers and the enclosure. This is different to the LED lifetime which only refers to the economical lifetime of the LEDs at which time the lumen output has dropped below the L Value. The product design life is calculated at the maximum ambient or working temperature of the product and takes into account the Daily Use.

Daily Use 16 hrs

The Daily Use is the recommended time required to meet the product's design life. Installations can exceed this time, however the product design life will be reduced proportionally.

Standards AS/NZS 60598.1
AS/NZS 60598.2.2
AS/NZS 61347.1
AS/NZS 61347.2.13
IEC/TR 62778
IEC 62031
AS/NZS 61535.1
AS CISPR 15
IEC 62386-102
IEC 62386-207

WARRANTY

Commercial Use Warranty 5 RTB (Total 5 Years)

Warranty Operating Hours 30000 hrs

This product is provided with a warranty up until the stated warranty period or until the stated warranty operating hours has been reached (whichever occurs first).

DIMENSIONS

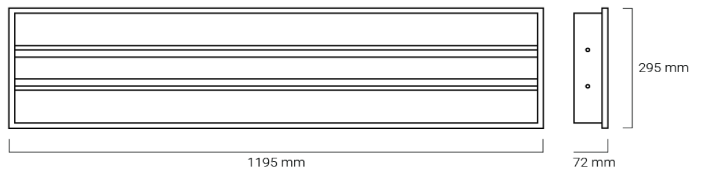
Product Height 72 mm

Product Length 1195 mm

Product Width 295 mm

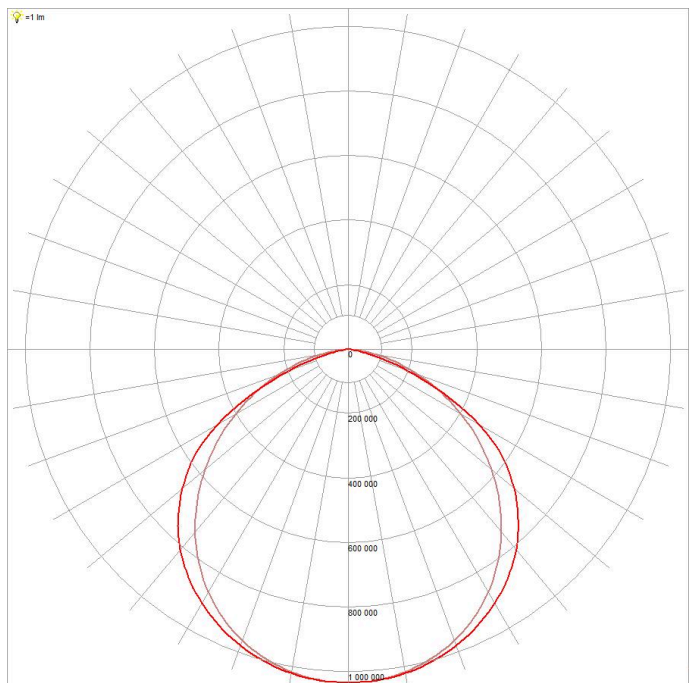
LINE DRAWINGS

EV/CURVE/ADV/312



PHOTOMETRICS

EV/CURVE/ADV/AIR/312/19W

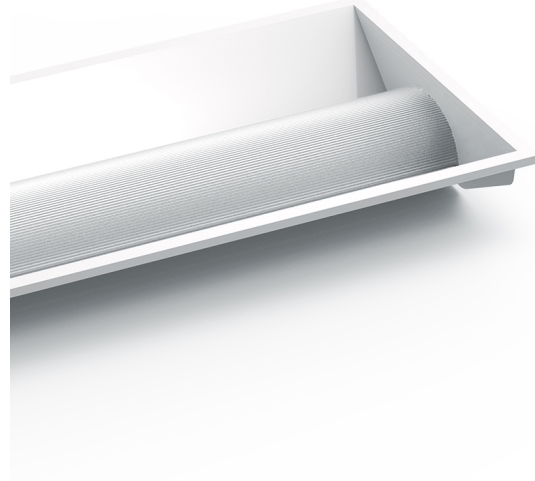


CURVE ADV CONCEALED AIR

Curve Advanced Concealed Air Troffer, CRI >80

FEATURES

- Low-glare curved reflector and even light distribution
- Concealed air louvers for air handling applications
- Same form factor as Curve Advanced and can be used interchangeably
- External LED driver for easy maintenance and installation
- Supplied with a choice of different softwiring and hardwiring options
- High efficiency design with >150Lm/W output
- Excellent L90B10 lifetime for energy efficient lighting designs
- Flicker free DALI-2 certified LED driver giving excellent compatibility



| ORDERING INFORMATION | |
|--|--|
| Order code | 13706 |
| Description | 19W Curve Adv Concealed Air Troffer 300x1200mm - 4000K - DALI - Wire by Click Plug |
| Driver Type | DALI DT6 LED Driver |
| DALI DT6 ~ Includes DALI-2 Driver with full support for DT6 allowing flicker free dimming with compliant DALI-2 Application controllers. | |
| Item Code | EV-CURVE-ADV-AIR-312-19W-DW |

| MECHANICAL | |
|-------------------|-------------------|
| Body Material | Cold rolled steel |
| Diffuser Material | PMMA |
| Product Finish | Powder coated |
| Fitting Colour | White |
| Installation Type | Recessed |
| IP Rating | IP40 |

| ELECTRICAL | |
|---|----------|
| Electrical Rating | Class II |
| Input Current | 0.1 A |
| Input Frequency | 50 Hz |
| Input voltage | 230Vac |
| In Australia the Input voltage is defined as 230Vac -6%/+10%. This effectively means that the voltage range of these products are 216Vac - 253Vac or 240V +6% | |

| | |
|--------------------|------------|
| Maximum Wattage | 19 W |
| Power Factor | 0.95 |
| Switch Type | Via DALI |
| Working Temp Range | 0 to 40 °C |

| LAMP | |
|---|------------------------|
| Macadam Steps (SDCM) | 4-step MacAdam Ellipse |
| CCT Configuration | Single |
| CRI | >80 |
| Lamp/LED Current | 500 mA |
| Lamp/LED voltage | 36 V |
| System Efficiency | 153 lm/W |
| UGR | <19 |
| UGR (Unified Glare Rating) is reported as per AS/NZS 1680.2 using the following design parameters; room reflectance 0.7/0.5/0.2 (C/W/F), ceiling height 2.7m, LLF=0.8 (Nominal) from the corrected UGR table. | |

| LED LIFETIME | |
|---|----------------------------|
| LED Lifetime | >54,000 hrs |
| This is the Reported LED Lifetime in Hours based on TM-21. Ektor does not list the projected or calculated LED lifetime, which is normally longer as TM-21 Addendum B explicitly states "The Calculated and Projected Lp(Dk) are not to be reported". This Lifetime refers to the life of a single LED however the system life is longer since the probability and binomial distribution of all LEDs in the system means that the average led is performing above the specification and compensates for the LEDs falling below. | |
| Ambient Temp (°C) | 25 °C 40 °C |
| L90B10 | 53,000 hrs 53,000 hrs |



| | | |
|---------------|-------------|-------------|
| L80B10 | >54,000 hrs | >54,000 hrs |
| L70B10 | >54,000 hrs | >54,000 hrs |

This rating defines the performance of the led within its lifetime. L relates to lumen depreciation, where the proceeding number gives the resultant lumen output at the end of it reported lifetime. L70, would mean 70% lumen depreciation which means 70% of its initial output and is tested accordingly to TM-21. The B part refers to failures, which can be define as the percentage of LEDs which fall below the L value in the projected lifetime. A value of B10 refers to 10% failure and a value of B50 refers to 50% failure. After the defined lifetime, the system will reach the defined lumen depreciation and the average led failures is defined by the B rating. The B rating is defined in and tested to IEC62717.

| | |
|-------------------------|----------|
| TM-21 Test Hours | 9000 hrs |
|-------------------------|----------|

COLOUR TEMPERATURE

| | |
|------------|--------|
| CCT | 4000 K |
|------------|--------|

| | |
|-------------------------|---------|
| Luminaire Lumens | 2900 lm |
|-------------------------|---------|

All photometric data has a tolerance of $\pm 10\%$. Luminaire lumens refers to the exit lumens or delivered lumens from the luminaire.

DRIVER

| | |
|-----------------|-----|
| Dimmable | Yes |
|-----------------|-----|

| | |
|------------------------|-----|
| Driver Included | Yes |
|------------------------|-----|

| | |
|--------------------------|----|
| Integrated Driver | No |
|--------------------------|----|

| | |
|--------------------|------------------|
| Driver Mode | Constant Current |
|--------------------|------------------|

| | |
|--------------------|---------------------|
| Driver Type | DALI DT6 LED Driver |
|--------------------|---------------------|

DALI DT6 ~ Includes DALI-2 Driver with full support for DT6 allowing flicker free dimming with compliant DALI-2 Application controllers.

| | |
|---------------------------------------|---------|
| Flex & Plug or Lead Length | 2400 mm |
|---------------------------------------|---------|

| | |
|--------------------|------------------|
| Wiring Type | WBC Plug (5 pin) |
|--------------------|------------------|

WBC ~ Supplied with a Wire by click- 5 pin plug, model number LA1025/5

COMPLIANCE

| | |
|----------------------------|---------|
| Product Design Life | 8 years |
|----------------------------|---------|

The product design life relates to the total product life which includes LEDs, drivers and the enclosure. This is different to the LED lifetime which only refers to the economical lifetime of the LEDs at which time the lumen output has dropped below the L Value. The product design life is calculated at the maximum ambient or working temperature of the product and takes into account the Daily Use.

| | |
|------------------|--------|
| Daily Use | 16 hrs |
|------------------|--------|

The Daily Use is the recommended time required to meet the product's design life. Installations can exceed this time, however the product design life will be reduced proportionally.

| | |
|------------------|---|
| Standards | AS/NZS 60598.1 AS/NZS 60598.2.2 AS/NZS 61347.1 AS/NZS 61347.2.13 IEC/TR 62778 IEC 62031 AS/NZS 61535.1 AS CISPR 15 IEC 62386-102 IEC 62386-207 |
|------------------|---|

WARRANTY

| | |
|--------------------------------|-----------------------|
| Commercial Use Warranty | 5 RTB (Total 5 Years) |
|--------------------------------|-----------------------|

| | |
|---------------------------------|-----------|
| Warranty Operating Hours | 30000 hrs |
|---------------------------------|-----------|

This product is provided with a warranty up until the stated warranty period or until the stated warranty operating hours has been reached (whichever occurs first).

DIMENSIONS

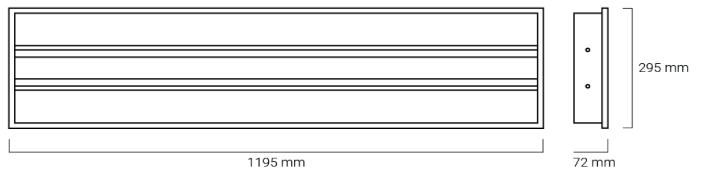
| | |
|-----------------------|-------|
| Product Height | 72 mm |
|-----------------------|-------|

| | |
|-----------------------|---------|
| Product Length | 1195 mm |
|-----------------------|---------|

| | |
|----------------------|--------|
| Product Width | 295 mm |
|----------------------|--------|

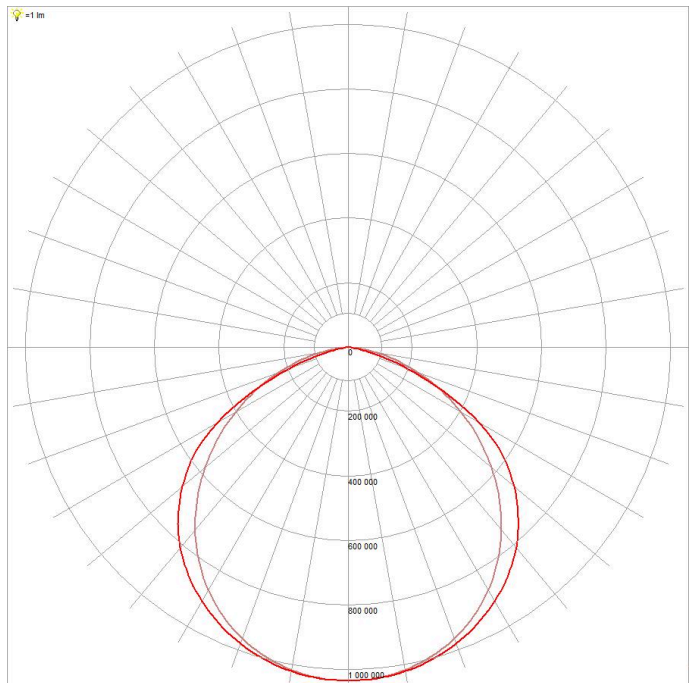
LINE DRAWINGS

EV/CURVE/ADV/312



PHOTOMETRICS

EV/CURVE/ADV/AIR/312/19W



CURVE ADV CONCEALED AIR

Curve Advanced Concealed Air Troffer, CRI >80

FEATURES

- Low-glare curved reflector and even light distribution
- Concealed air louvers for air handling applications
- Same form factor as Curve Advanced and can be used interchangeably
- External LED driver for easy maintenance and installation
- Supplied with a choice of different softwiring and hardwiring options
- High efficiency design with >150Lm/W output
- Excellent L90B10 lifetime for energy efficient lighting designs
- Flicker free DALI-2 certified LED driver giving excellent compatibility

ORDERING INFORMATION

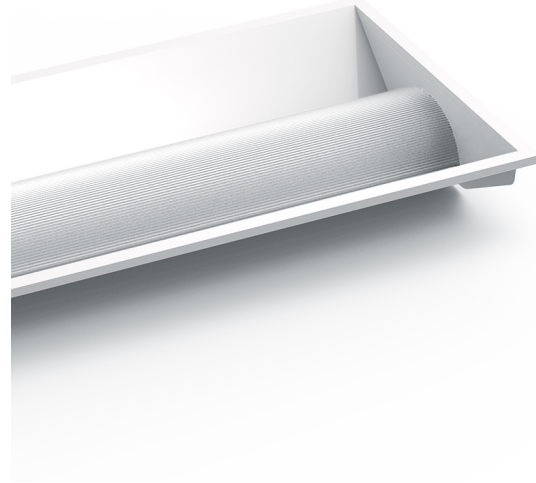
| | |
|--|---|
| Order code | 13583 |
| Description | 22W Curve Adv Concealed Air Troffer 300x1200mm - 4000K - DALI |
| Driver Type | DALI DT6 LED Driver |
| DALI DT6 ~ Includes DALI-2 Driver with full support for DT6 allowing flicker free dimming with compliant DALI-2 Application controllers. | |
| Item Code | EV-CURVE-ADV-AIR-312-22W-DA |

MECHANICAL

| | |
|--------------------------|-------------------|
| Body Material | Cold rolled steel |
| Diffuser Material | PMMA |
| Product Finish | Powder coated |
| Fitting Colour | White |
| Installation Type | Recessed |
| IP Rating | IP40 |

ELECTRICAL

| | |
|---|----------|
| Electrical Rating | Class II |
| Input Current | 0.11 A |
| Input Frequency | 50 Hz |
| Input voltage | 230Vac |
| In Australia the Input voltage is defined as 230Vac -6%/+10%. This effectively means that the voltage range of these products are 216Vac - 253Vac or 240V +6% | |
| Maximum Wattage | 22 W |



| | |
|---------------------------|------------|
| Power Factor | 0.95 |
| Switch Type | Via DALI |
| Working Temp Range | 0 to 40 °C |

LAMP

| | |
|-----------------------------|------------------------|
| Macadam Steps (SDCM) | 4-step MacAdam Ellipse |
| CCT Configuration | Single |
| CRI | >80 |
| Lamp/LED Current | 600 mA |
| Lamp/LED voltage | 36 V |
| System Efficiency | 157 lm/W |
| UGR | <22 |

UGR (Unified Glare Rating) is reported as per AS/NZS 1680.2 using the following design parameters; room reflectance 0.7/0.5/0.2 (C/W/F), ceiling height 2.7m, LLF=0.8 (Nominal) from the corrected UGR table.

LED LIFETIME

| | | |
|---|-------------|-------------|
| LED Lifetime | >54,000 hrs | |
| This is the Reported LED Lifetime in Hours based on TM-21. Ektor does not list the projected or calculated LED lifetime, which is normally longer as TM-21 Addendum B explicitly states "The Calculated and Projected Lp(Dk) are not to be reported". This Lifetime refers to the life of a single LED however the system life is longer since the probability and binomial distribution of all LEDs in the system means that the average led is performing above the specification and compensates for the LEDs falling below. | | |
| Ambient Temp (°C) | 25 °C | 40 °C |
| L90B10 | 53,000 hrs | 53,000 hrs |
| L80B10 | >54,000 hrs | >54,000 hrs |

L70B10 >54,000 hrs >54,000 hrs

This rating defines the performance of the led within its lifetime. L relates to lumen depreciation, where the proceeding number gives the resultant lumen output at the end of it reported lifetime. L70, would mean 30% lumen depreciation which means 70% of its initial output and is tested accordingly to TM-21. The B part refers to failures, which can be define as the percentage of LEDs which fall below the L value in the projected lifetime. A value of B10 refers to 10% failure and a value of B50 refers to 50% failure. After the defined lifetime, the system will reach the defined lumen depreciation and the average led failures is defined by the B rating. The B rating is defined in and tested to IEC62717.

TM-21 Test Hours 9000 hrs

COLOUR TEMPERATURE

CCT 4000 K

Luminaire Lumens 3450 lm

All photometric data has a tolerance of $\pm 10\%$. Luminaire lumens refers to the exit lumens or delivered lumens from the luminaire.

DRIVER

Dimmable Yes

Driver Included Yes

Integrated Driver No

Driver Mode Constant Current

Driver Type DALI DT6 LED Driver

DALI DT6 ~ Includes DALI-2 Driver with full support for DT6 allowing flicker free dimming with compliant DALI-2 Application controllers.

Wiring Type Re-wireable terminal block (4 pin)

COMPLIANCE

Product Design Life 8 years

The product design life relates to the total product life which includes LEDs, drivers and the enclosure. This is different to the LED lifetime which only refers to the economical lifetime of the LEDs at which time the lumen output has dropped below the L Value. The product design life is calculated at the maximum ambient or working temperature of the product and takes into account the Daily Use.

Daily Use 16 hrs

The Daily Use is the recommended time required to meet the product's design life. Installations can exceed this time, however the product design life will be reduced proportionally.

Standards

- AS/NZS 60598.1
- AS/NZS 60598.2.2
- AS/NZS 61347.1
- AS/NZS 61347.2.13
- IEC/TR 62778
- IEC 62031
- AS CISPR 15
- IEC 62386-102
- IEC 62386-207

WARRANTY

Commercial Use Warranty 5 RTB (Total 5 Years)

Warranty Operating Hours 30000 hrs

This product is provided with a warranty up until the stated warranty period or until the stated warranty operating hours has been reached (whichever occurs first).

DIMENSIONS

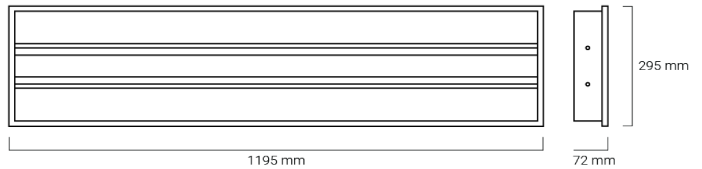
Product Height 72 mm

Product Length 1195 mm

Product Width 295 mm

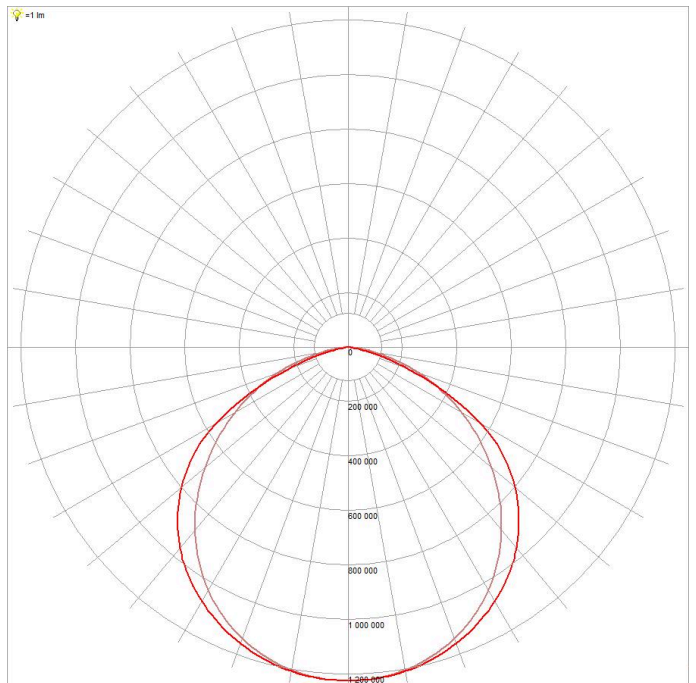
LINE DRAWINGS

EV/CURVE/ADV/312



PHOTOMETRICS

EV/CURVE/ADV/AIR/312/22W

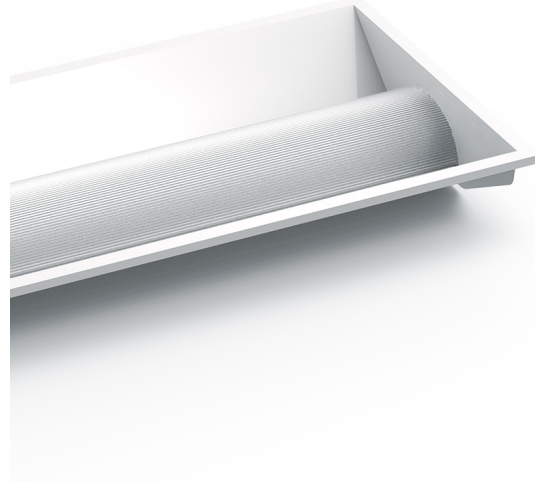


CURVE ADV CONCEALED AIR

Curve Advanced Concealed Air Troffer, CRI >80

FEATURES

- Low-glare curved reflector and even light distribution
- Concealed air louvers for air handling applications
- Same form factor as Curve Advanced and can be used interchangeably
- External LED driver for easy maintenance and installation
- Supplied with a choice of different softwiring and hardwiring options
- High efficiency design with >150Lm/W output
- Excellent L90B10 lifetime for energy efficient lighting designs
- Flicker free DALI-2 certified LED driver giving excellent compatibility



ORDERING INFORMATION

| | |
|--|--|
| Order code | 13584 |
| Description | 22W Curve Adv Concealed Air Troffer 300x1200mm - 4000K - DALI - CMS Plug |
| Driver Type | DALI DT6 LED Driver |
| DALI DT6 ~ Includes DALI-2 Driver with full support for DT6 allowing flicker free dimming with compliant DALI-2 Application controllers. | |
| Item Code | EV-CURVE-ADV-AIR-312-22W-DC |

MECHANICAL

| | |
|--------------------------|-------------------|
| Body Material | Cold rolled steel |
| Diffuser Material | PMMA |
| Product Finish | Powder coated |
| Fitting Colour | White |
| Installation Type | Recessed |
| IP Rating | IP40 |

ELECTRICAL

| | |
|---|----------|
| Electrical Rating | Class II |
| Input Current | 0.11 A |
| Input Frequency | 50 Hz |
| Input voltage | 230Vac |
| In Australia the Input voltage is defined as 230Vac -6%/+10%. This effectively means that the voltage range of these products are 216Vac - 253Vac or 240V +6% | |
| Maximum Wattage | 22 W |

| | |
|---------------------------|------------|
| Power Factor | 0.95 |
| Switch Type | Via DALI |
| Working Temp Range | 0 to 40 °C |

LAMP

| | |
|-----------------------------|------------------------|
| Macadam Steps (SDCM) | 4-step MacAdam Ellipse |
| CCT Configuration | Single |
| CRI | >80 |
| Lamp/LED Current | 600 mA |
| Lamp/LED voltage | 36 V |
| System Efficiency | 157 lm/W |
| UGR | <22 |

UGR (Unified Glare Rating) is reported as per AS/NZS 1680.2 using the following design parameters; room reflectance 0.7/0.5/0.2 (C/W/F), ceiling height 2.7m, LLF=0.8 (Nominal) from the corrected UGR table.

LED LIFETIME

| | | |
|---|-------------|-------------|
| LED Lifetime | >54,000 hrs | |
| This is the Reported LED Lifetime in Hours based on TM-21. Ektor does not list the projected or calculated LED lifetime, which is normally longer as TM-21 Addendum B explicitly states "The Calculated and Projected Lp(Dk) are not to be reported". This Lifetime refers to the life of a single LED however the system life is longer since the probability and binomial distribution of all LEDs in the system means that the average led is performing above the specification and compensates for the LEDs falling below. | | |
| Ambient Temp (°C) | 25 °C | 40 °C |
| L90B10 | 53,000 hrs | 53,000 hrs |
| L80B10 | >54,000 hrs | >54,000 hrs |



L70B10 >54,000 hrs >54,000 hrs

This rating defines the performance of the led within its lifetime. L relates to lumen depreciation, where the proceeding number gives the resultant lumen output at the end of it reported lifetime. L70, would mean 30% lumen depreciation which means 70% of its initial output and is tested accordingly to TM-21. The B part refers to failures, which can be define as the percentage of LEDs which fall below the L value in the projected lifetime. A value of B10 refers to 10% failure and a value of B50 refers to 50% failure. After the defined lifetime, the system will reach the defined lumen depreciation and the average led failures is defined by the B rating. The B rating is defined in and tested to IEC62717.

TM-21 Test Hours 9000 hrs

COLOUR TEMPERATURE

CCT 4000 K

Luminaire Lumens 3450 lm

All photometric data has a tolerance of $\pm 10\%$. Luminaire lumens refers to the exit lumens or delivered lumens from the luminaire.

DRIVER

Dimmable Yes

Driver Included Yes

Integrated Driver No

Driver Mode Constant Current

Driver Type DALI DT6 LED Driver

DALI DT6 ~ Includes DALI-2 Driver with full support for DT6 allowing flicker free dimming with compliant DALI-2 Application controllers.

Flex & Plug or Lead Length 2400 mm

Wiring Type CMS Plug (5 pin)

CMS ~ Supplied with a CMS Electracom- 5 pin plug to suit QF series wiring, model number QFP3AT

COMPLIANCE

Product Design Life 8 years

The product design life relates to the total product life which includes LEDs, drivers and the enclosure. This is different to the LED lifetime which only refers to the economical lifetime of the LEDs at which time the lumen output has dropped below the L Value. The product design life is calculated at the maximum ambient or working temperature of the product and takes into account the Daily Use.

Daily Use 16 hrs

The Daily Use is the recommended time required to meet the product's design life. Installations can exceed this time, however the product design life will be reduced proportionally.

Standards AS/NZS 60598.1
AS/NZS 60598.2.2
AS/NZS 61347.1
AS/NZS 61347.2.13
IEC/TR 62778
IEC 62031
AS/NZS 61535.1
AS CISPR 15
IEC 62386-102
IEC 62386-207

WARRANTY

Commercial Use Warranty 5 RTB (Total 5 Years)

Warranty Operating Hours 30000 hrs

This product is provided with a warranty up until the stated warranty period or until the stated warranty operating hours has been reached (whichever occurs first).

DIMENSIONS

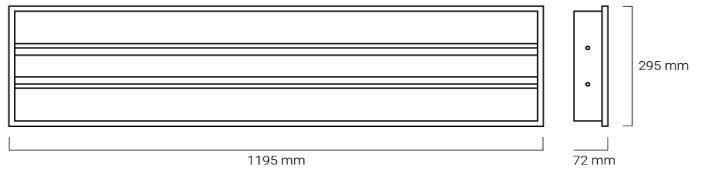
Product Height 72 mm

Product Length 1195 mm

Product Width 295 mm

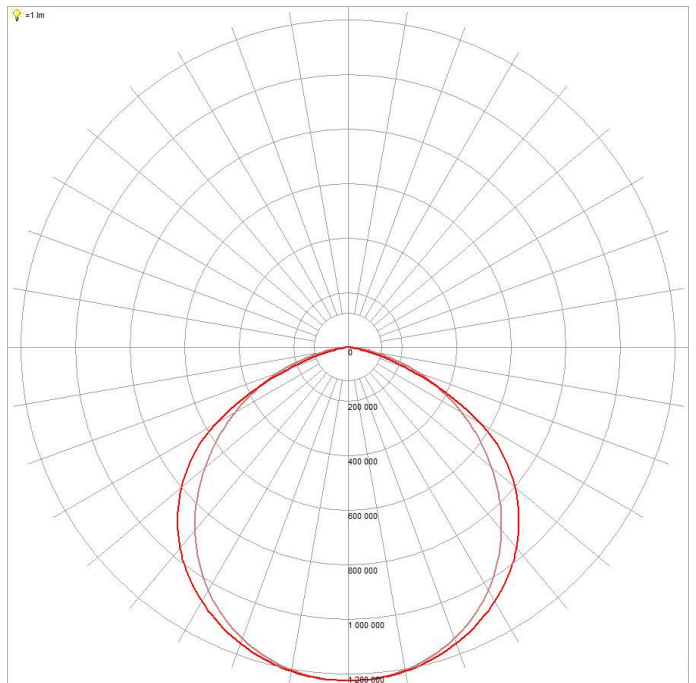
LINE DRAWINGS

EV/CURVE/ADV/312



PHOTOMETRICS

EV/CURVE/ADV/AIR/312/22W

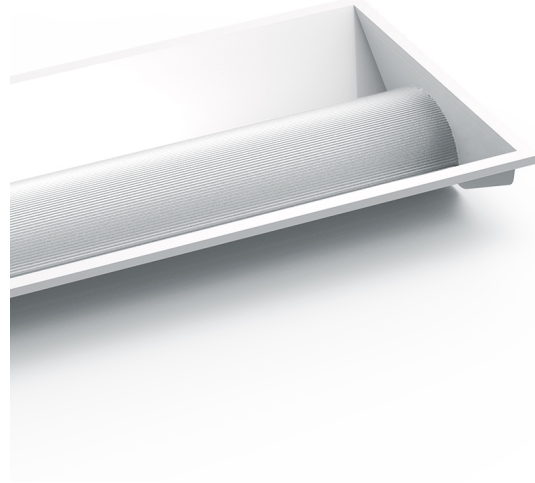


CURVE ADV CONCEALED AIR

Curve Advanced Concealed Air Troffer, CRI >80

FEATURES

- Low-glare curved reflector and even light distribution
- Concealed air louvers for air handling applications
- Same form factor as Curve Advanced and can be used interchangeably
- External LED driver for easy maintenance and installation
- Supplied with a choice of different softwiring and hardwiring options
- High efficiency design with >150Lm/W output
- Excellent L90B10 lifetime for energy efficient lighting designs
- Flicker free DALI-2 certified LED driver giving excellent compatibility



| ORDERING INFORMATION | |
|--|--|
| Order code | 13585 |
| Description | 22W Curve Adv Concealed Air Troffer 300x1200mm - 4000K - DALI - Wire by Click Plug |
| Driver Type | DALI DT6 LED Driver |
| DALI DT6 ~ Includes DALI-2 Driver with full support for DT6 allowing flicker free dimming with compliant DALI-2 Application controllers. | |
| Item Code | EV-CURVE-ADV-AIR-312-22W-DW |

| MECHANICAL | |
|-------------------|-------------------|
| Body Material | Cold rolled steel |
| Diffuser Material | PMMA |
| Product Finish | Powder coated |
| Fitting Colour | White |
| Installation Type | Recessed |
| IP Rating | IP40 |

| ELECTRICAL | |
|---|----------|
| Electrical Rating | Class II |
| Input Current | 0.11 A |
| Input Frequency | 50 Hz |
| Input voltage | 230Vac |
| In Australia the Input voltage is defined as 230Vac -6%/+10%. This effectively means that the voltage range of these products are 216Vac - 253Vac or 240V +6% | |

| | |
|--------------------|------------|
| Maximum Wattage | 22 W |
| Power Factor | 0.95 |
| Switch Type | Via DALI |
| Working Temp Range | 0 to 40 °C |

| LAMP | |
|---|------------------------|
| Macadam Steps (SDCM) | 4-step MacAdam Ellipse |
| CCT Configuration | Single |
| CRI | >80 |
| Lamp/LED Current | 600 mA |
| Lamp/LED voltage | 36 V |
| System Efficiency | 157 lm/W |
| UGR | <22 |
| UGR (Unified Glare Rating) is reported as per AS/NZS 1680.2 using the following design parameters; room reflectance 0.7/0.5/0.2 (C/W/F), ceiling height 2.7m, LLF=0.8 (Nominal) from the corrected UGR table. | |

| LED LIFETIME | |
|---|----------------------------|
| LED Lifetime | >54,000 hrs |
| This is the Reported LED Lifetime in Hours based on TM-21. Ektor does not list the projected or calculated LED lifetime, which is normally longer as TM-21 Addendum B explicitly states "The Calculated and Projected Lp(Dk) are not to be reported". This Lifetime refers to the life of a single LED however the system life is longer since the probability and binomial distribution of all LEDs in the system means that the average led is performing above the specification and compensates for the LEDs falling below. | |
| Ambient Temp (°C) | 25 °C 40 °C |
| L90B10 | 53,000 hrs 53,000 hrs |



| | | |
|---------------|-------------|-------------|
| L80B10 | >54,000 hrs | >54,000 hrs |
| L70B10 | >54,000 hrs | >54,000 hrs |

This rating defines the performance of the led within its lifetime. L relates to lumen depreciation, where the proceeding number gives the resultant lumen output at the end of it reported lifetime. L70, would mean 70% lumen depreciation which means 70% of its initial output and is tested accordingly to TM-21. The B part refers to failures, which can be define as the percentage of LEDs which fall below the L value in the projected lifetime. A value of B10 refers to 10% failure and a value of B50 refers to 50% failure. After the defined lifetime, the system will reach the defined lumen depreciation and the average led failures is defined by the B rating. The B rating is defined in and tested to IEC62717.

| | |
|-------------------------|----------|
| TM-21 Test Hours | 9000 hrs |
|-------------------------|----------|

COLOUR TEMPERATURE

| | |
|------------|--------|
| CCT | 4000 K |
|------------|--------|

| | |
|-------------------------|---------|
| Luminaire Lumens | 3450 lm |
|-------------------------|---------|

All photometric data has a tolerance of $\pm 10\%$. Luminaire lumens refers to the exit lumens or delivered lumens from the luminaire.

DRIVER

| | |
|-----------------|-----|
| Dimmable | Yes |
|-----------------|-----|

| | |
|------------------------|-----|
| Driver Included | Yes |
|------------------------|-----|

| | |
|--------------------------|----|
| Integrated Driver | No |
|--------------------------|----|

| | |
|--------------------|------------------|
| Driver Mode | Constant Current |
|--------------------|------------------|

| | |
|--------------------|---------------------|
| Driver Type | DALI DT6 LED Driver |
|--------------------|---------------------|

DALI DT6 ~ Includes DALI-2 Driver with full support for DT6 allowing flicker free dimming with compliant DALI-2 Application controllers.

| | |
|---------------------------------------|---------|
| Flex & Plug or Lead Length | 2400 mm |
|---------------------------------------|---------|

| | |
|--------------------|------------------|
| Wiring Type | WBC Plug (5 pin) |
|--------------------|------------------|

WBC ~ Supplied with a Wire by click- 5 pin plug, model number LA1025/5

COMPLIANCE

| | |
|----------------------------|---------|
| Product Design Life | 8 years |
|----------------------------|---------|

The product design life relates to the total product life which includes LEDs, drivers and the enclosure. This is different to the LED lifetime which only refers to the economical lifetime of the LEDs at which time the lumen output has dropped below the L Value. The product design life is calculated at the maximum ambient or working temperature of the product and takes into account the Daily Use.

| | |
|------------------|--------|
| Daily Use | 16 hrs |
|------------------|--------|

The Daily Use is the recommended time required to meet the product's design life. Installations can exceed this time, however the product design life will be reduced proportionally.

| | |
|------------------|---|
| Standards | AS/NZS 60598.1 AS/NZS 60598.2.2 AS/NZS 61347.1 AS/NZS 61347.2.13 IEC/TR 62778 IEC 62031 AS/NZS 61535.1 AS CISPR 15 IEC 62386-102 IEC 62386-207 |
|------------------|---|

WARRANTY

| | |
|--------------------------------|-----------------------|
| Commercial Use Warranty | 5 RTB (Total 5 Years) |
|--------------------------------|-----------------------|

| | |
|---------------------------------|-----------|
| Warranty Operating Hours | 30000 hrs |
|---------------------------------|-----------|

This product is provided with a warranty up until the stated warranty period or until the stated warranty operating hours has been reached (whichever occurs first).

DIMENSIONS

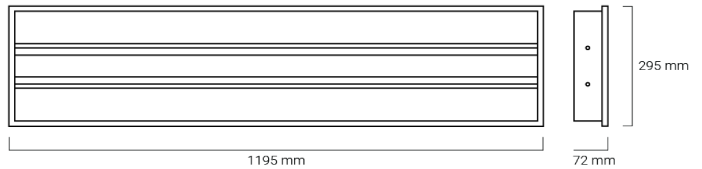
| | |
|-----------------------|-------|
| Product Height | 72 mm |
|-----------------------|-------|

| | |
|-----------------------|---------|
| Product Length | 1195 mm |
|-----------------------|---------|

| | |
|----------------------|--------|
| Product Width | 295 mm |
|----------------------|--------|

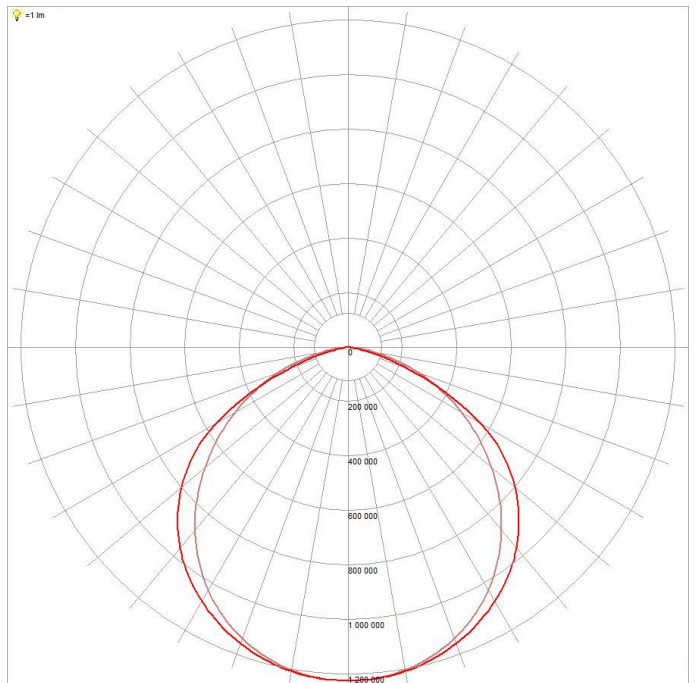
LINE DRAWINGS

EV/CURVE/ADV/312



PHOTOMETRICS

EV/CURVE/ADV/AIR/312/22W

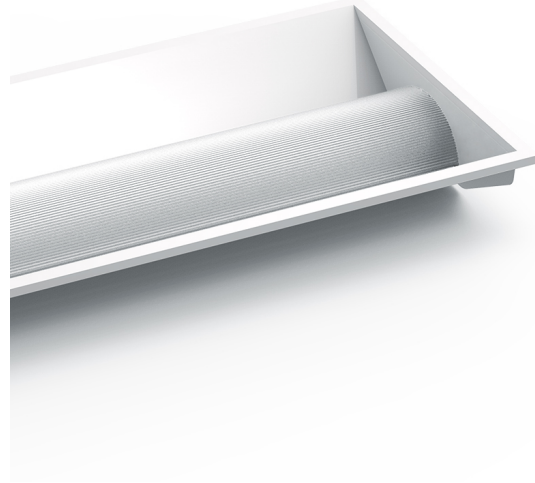


CURVE ADV CONCEALED AIR

Curve Advanced Concealed Air Troffer, CRI >80

FEATURES

- Low-glare curved reflector and even light distribution
- Concealed air louvers for air handling applications
- Same form factor as Curve Advanced and can be used interchangeably
- External LED driver for easy maintenance and installation
- Supplied with a choice of different softwiring and hardwiring options
- High efficiency design with >150Lm/W output
- Excellent L90B10 lifetime for energy efficient lighting designs
- Flicker free DALI-2 certified LED driver giving excellent compatibility



| ORDERING INFORMATION | |
|--|---|
| Order code | 13589 |
| Description | 30W Curve Adv Concealed Air Troffer 300x1200mm - 4000K - DALI |
| Driver Type | DALI DT6 LED Driver |
| DALI DT6 ~ Includes DALI-2 Driver with full support for DT6 allowing flicker free dimming with compliant DALI-2 Application controllers. | |
| Item Code | EV-CURVE-ADV-AIR-312-30W-DA |

| MECHANICAL | |
|-------------------|-------------------|
| Body Material | Cold rolled steel |
| Diffuser Material | PMMA |
| Product Finish | Powder coated |
| Fitting Colour | White |
| Installation Type | Recessed |
| IP Rating | IP40 |

| ELECTRICAL | |
|---|----------|
| Electrical Rating | Class II |
| Input Current | 0.16 A |
| Input Frequency | 50 Hz |
| Input voltage | 230Vac |
| In Australia the Input voltage is defined as 230Vac -6%/+10%. This effectively means that the voltage range of these products are 216Vac - 253Vac or 240V +6% | |
| Maximum Wattage | 30 W |

| | |
|--------------------|------------|
| Power Factor | 0.95 |
| Switch Type | Via DALI |
| Working Temp Range | 0 to 40 °C |

| LAMP | |
|---|------------------------|
| Macadam Steps (SDCM) | 4-step MacAdam Ellipse |
| CCT Configuration | Single |
| CRI | >80 |
| Lamp/LED Current | 800 mA |
| Lamp/LED voltage | 36 V |
| System Efficiency | 153 lm/W |
| UGR | <22 |
| UGR (Unified Glare Rating) is reported as per AS/NZS 1680.2 using the following design parameters; room reflectance 0.7/0.5/0.2 (C/W/F), ceiling height 2.7m, LLF=0.8 (Nominal) from the corrected UGR table. | |

| LED LIFETIME | | |
|---|-------------|-------------|
| LED Lifetime | >54,000 hrs | |
| This is the Reported LED Lifetime in Hours based on TM-21. Ektor does not list the projected or calculated LED lifetime, which is normally longer as TM-21 Addendum B explicitly states "The Calculated and Projected Lp(Dk) are not to be reported". This Lifetime refers to the life of a single LED however the system life is longer since the probability and binomial distribution of all LEDs in the system means that the average led is performing above the specification and compensates for the LEDs falling below. | | |
| Ambient Temp (°C) | 25 °C | 40 °C |
| L90B10 | 53,000 hrs | 53,000 hrs |
| L80B10 | >54,000 hrs | >54,000 hrs |



L70B10 >54,000 hrs >54,000 hrs

This rating defines the performance of the led within its lifetime. L relates to lumen depreciation, where the proceeding number gives the resultant lumen output at the end of it reported lifetime. L70, would mean 30% lumen depreciation which means 70% of its initial output and is tested accordingly to TM-21. The B part refers to failures, which can be define as the percentage of LEDs which fall below the L value in the projected lifetime. A value of B10 refers to 10% failure and a value of B50 refers to 50% failure. After the defined lifetime, the system will reach the defined lumen depreciation and the average led failures is defined by the B rating. The B rating is defined in and tested to IEC62717.

TM-21 Test Hours 9000 hrs

COLOUR TEMPERATURE

CCT 4000 K

Luminaire Lumens 4600 lm

All photometric data has a tolerance of $\pm 10\%$. Luminaire lumens refers to the exit lumens or delivered lumens from the luminaire.

DRIVER

Dimmable Yes

Driver Included Yes

Integrated Driver No

Driver Mode Constant Current

Driver Type DALI DT6 LED Driver

DALI DT6 ~ Includes DALI-2 Driver with full support for DT6 allowing flicker free dimming with compliant DALI-2 Application controllers.

Wiring Type Re-wireable terminal block (4 pin)

COMPLIANCE

Product Design Life 8 years

The product design life relates to the total product life which includes LEDs, drivers and the enclosure. This is different to the LED lifetime which only refers to the economical lifetime of the LEDs at which time the lumen output has dropped below the L Value. The product design life is calculated at the maximum ambient or working temperature of the product and takes into account the Daily Use.

Daily Use 16 hrs

The Daily Use is the recommended time required to meet the product's design life. Installations can exceed this time, however the product design life will be reduced proportionally.

Standards
 AS/NZS 60598.1
 AS/NZS 60598.2.2
 AS/NZS 61347.1
 AS/NZS 61347.2.13
 IEC/TR 62778
 IEC 62031
 AS CISPR 15
 IEC 62386-102
 IEC 62386-207

WARRANTY

Commercial Use Warranty 5 RTB (Total 5 Years)

Warranty Operating Hours 30000 hrs

This product is provided with a warranty up until the stated warranty period or until the stated warranty operating hours has been reached (whichever occurs first).

DIMENSIONS

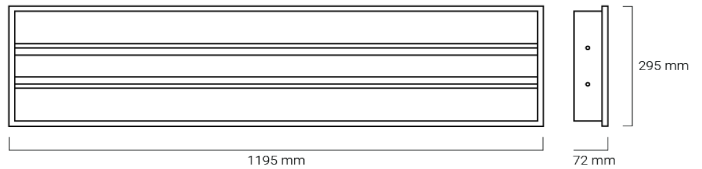
Product Height 72 mm

Product Length 1195 mm

Product Width 295 mm

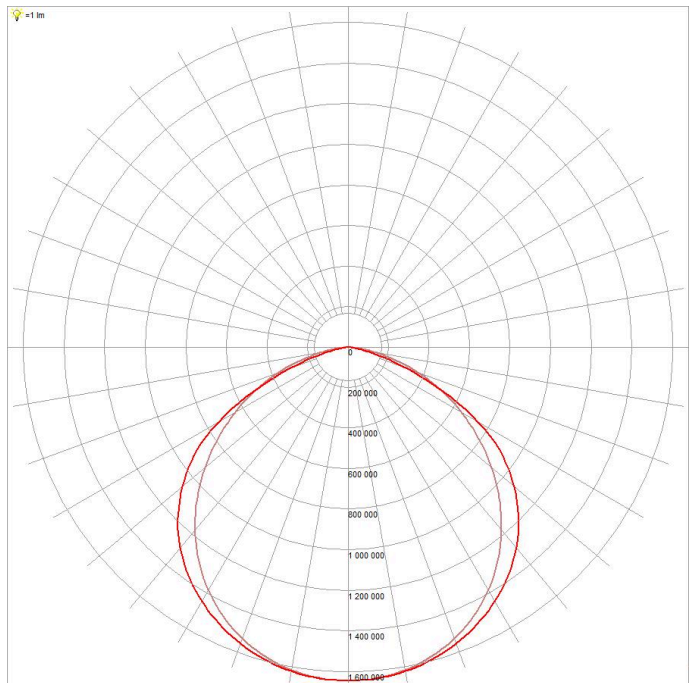
LINE DRAWINGS

EV/CURVE/ADV/312



PHOTOMETRICS

EV/CURVE/ADV/AIR/312/30W

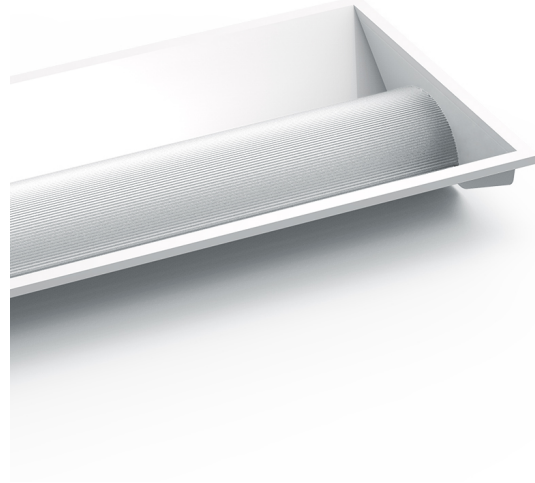


CURVE ADV CONCEALED AIR

Curve Advanced Concealed Air Troffer, CRI >80

FEATURES

- Low-glare curved reflector and even light distribution
- Concealed air louvers for air handling applications
- Same form factor as Curve Advanced and can be used interchangeably
- External LED driver for easy maintenance and installation
- Supplied with a choice of different softwiring and hardwiring options
- High efficiency design with >150Lm/W output
- Excellent L90B10 lifetime for energy efficient lighting designs
- Flicker free DALI-2 certified LED driver giving excellent compatibility



| ORDERING INFORMATION | |
|--|--|
| Order code | 13590 |
| Description | 30W Curve Adv Concealed Air Troffer 300x1200mm - 4000K - DALI - CMS Plug |
| Driver Type | DALI DT6 LED Driver |
| DALI DT6 ~ Includes DALI-2 Driver with full support for DT6 allowing flicker free dimming with compliant DALI-2 Application controllers. | |
| Item Code | EV-CURVE-ADV-AIR-312-30W-DC |

| MECHANICAL | |
|-------------------|-------------------|
| Body Material | Cold rolled steel |
| Diffuser Material | PMMA |
| Product Finish | Powder coated |
| Fitting Colour | White |
| Installation Type | Recessed |
| IP Rating | IP40 |

| ELECTRICAL | |
|---|----------|
| Electrical Rating | Class II |
| Input Current | 0.16 A |
| Input Frequency | 50 Hz |
| Input voltage | 230Vac |
| In Australia the Input voltage is defined as 230Vac -6%/+10%. This effectively means that the voltage range of these products are 216Vac - 253Vac or 240V +6% | |
| Maximum Wattage | 30 W |

| | |
|--------------------|------------|
| Power Factor | 0.95 |
| Switch Type | Via DALI |
| Working Temp Range | 0 to 40 °C |

| LAMP | |
|---|------------------------|
| Macadam Steps (SDCM) | 4-step MacAdam Ellipse |
| CCT Configuration | Single |
| CRI | >80 |
| Lamp/LED Current | 800 mA |
| Lamp/LED voltage | 36 V |
| System Efficiency | 153 lm/W |
| UGR | <22 |
| UGR (Unified Glare Rating) is reported as per AS/NZS 1680.2 using the following design parameters; room reflectance 0.7/0.5/0.2 (C/W/F), ceiling height 2.7m, LLF=0.8 (Nominal) from the corrected UGR table. | |

| LED LIFETIME | | |
|---|-------------|-------------|
| LED Lifetime | >54,000 hrs | |
| This is the Reported LED Lifetime in Hours based on TM-21. Ektor does not list the projected or calculated LED lifetime, which is normally longer as TM-21 Addendum B explicitly states "The Calculated and Projected Lp(Dk) are not to be reported". This Lifetime refers to the life of a single LED however the system life is longer since the probability and binomial distribution of all LEDs in the system means that the average led is performing above the specification and compensates for the LEDs falling below. | | |
| Ambient Temp (°C) | 25 °C | 40 °C |
| L90B10 | 53,000 hrs | 53,000 hrs |
| L80B10 | >54,000 hrs | >54,000 hrs |



L70B10 >54,000 hrs >54,000 hrs

This rating defines the performance of the led within its lifetime. L relates to lumen depreciation, where the proceeding number gives the resultant lumen output at the end of it reported lifetime. L70, would mean 30% lumen depreciation which means 70% of its initial output and is tested accordingly to TM-21. The B part refers to failures, which can be define as the percentage of LEDs which fall below the L value in the projected lifetime. A value of B10 refers to 10% failure and a value of B50 refers to 50% failure. After the defined lifetime, the system will reach the defined lumen depreciation and the average led failures is defined by the B rating. The B rating is defined in and tested to IEC62717.

TM-21 Test Hours 9000 hrs

COLOUR TEMPERATURE

CCT 4000 K

Luminaire Lumens 4600 lm

All photometric data has a tolerance of $\pm 10\%$. Luminaire lumens refers to the exit lumens or delivered lumens from the luminaire.

DRIVER

Dimmable Yes

Driver Included Yes

Integrated Driver No

Driver Mode Constant Current

Driver Type DALI DT6 LED Driver

DALI DT6 ~ Includes DALI-2 Driver with full support for DT6 allowing flicker free dimming with compliant DALI-2 Application controllers.

Flex & Plug or Lead Length 2400 mm

Wiring Type CMS Plug (5 pin)

CMS ~ Supplied with a CMS Electracom- 5 pin plug to suit QF series wiring, model number QFP3AT

COMPLIANCE

Product Design Life 8 years

The product design life relates to the total product life which includes LEDs, drivers and the enclosure. This is different to the LED lifetime which only refers to the economical lifetime of the LEDs at which time the lumen output has dropped below the L Value. The product design life is calculated at the maximum ambient or working temperature of the product and takes into account the Daily Use.

Daily Use 16 hrs

The Daily Use is the recommended time required to meet the product's design life. Installations can exceed this time, however the product design life will be reduced proportionally.

Standards AS/NZS 60598.1
AS/NZS 60598.2.2
AS/NZS 61347.1
AS/NZS 61347.2.13
IEC/TR 62778
IEC 62031
AS/NZS 61535.1
AS CISPR 15
IEC 62386-102
IEC 62386-207

WARRANTY

Commercial Use Warranty 5 RTB (Total 5 Years)

Warranty Operating Hours 30000 hrs

This product is provided with a warranty up until the stated warranty period or until the stated warranty operating hours has been reached (whichever occurs first).

DIMENSIONS

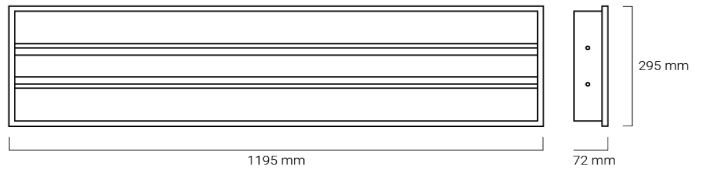
Product Height 72 mm

Product Length 1195 mm

Product Width 295 mm

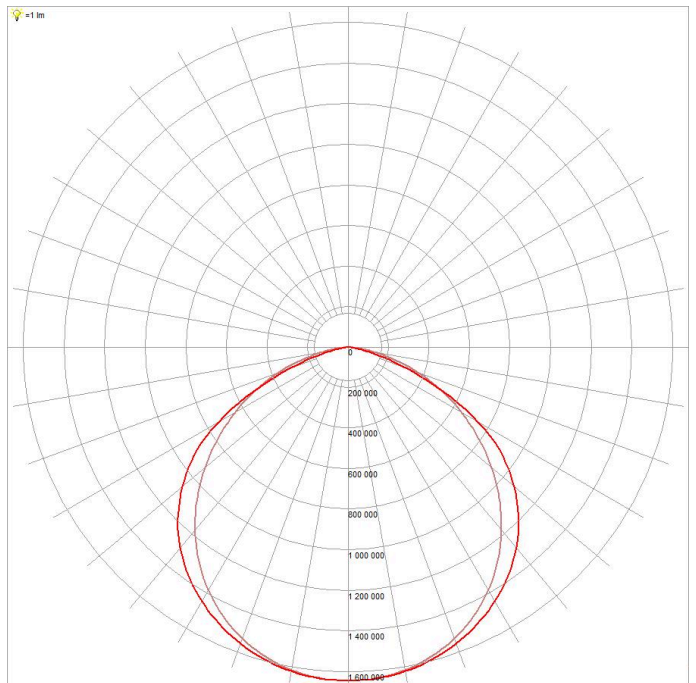
LINE DRAWINGS

EV/CURVE/ADV/312



PHOTOMETRICS

EV/CURVE/ADV/AIR/312/30W

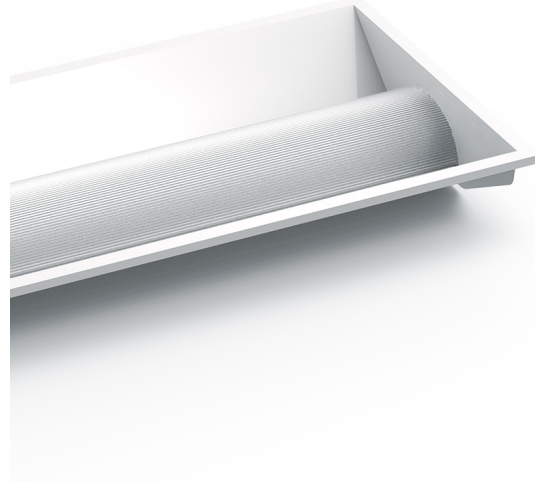


CURVE ADV CONCEALED AIR

Curve Advanced Concealed Air Troffer, CRI >80

FEATURES

- Low-glare curved reflector and even light distribution
- Concealed air louvers for air handling applications
- Same form factor as Curve Advanced and can be used interchangeably
- External LED driver for easy maintenance and installation
- Supplied with a choice of different softwiring and hardwiring options
- High efficiency design with >150Lm/W output
- Excellent L90B10 lifetime for energy efficient lighting designs
- Flicker free DALI-2 certified LED driver giving excellent compatibility



| ORDERING INFORMATION | |
|--|--|
| Order code | 13591 |
| Description | 30W Curve Adv Concealed Air Troffer 300x1200mm - 4000K - DALI - Wire by Click Plug |
| Driver Type | DALI DT6 LED Driver |
| DALI DT6 ~ Includes DALI-2 Driver with full support for DT6 allowing flicker free dimming with compliant DALI-2 Application controllers. | |
| Item Code | EV-CURVE-ADV-AIR-312-30W-DW |

| MECHANICAL | |
|-------------------|-------------------|
| Body Material | Cold rolled steel |
| Diffuser Material | PMMA |
| Product Finish | Powder coated |
| Fitting Colour | White |
| Installation Type | Recessed |
| IP Rating | IP40 |

| ELECTRICAL | |
|---|----------|
| Electrical Rating | Class II |
| Input Current | 0.16 A |
| Input Frequency | 50 Hz |
| Input voltage | 230Vac |
| In Australia the Input voltage is defined as 230Vac -6%/+10%. This effectively means that the voltage range of these products are 216Vac - 253Vac or 240V +6% | |

| | |
|--------------------|------------|
| Maximum Wattage | 30 W |
| Power Factor | 0.95 |
| Switch Type | Via DALI |
| Working Temp Range | 0 to 40 °C |

| LAMP | |
|---|------------------------|
| Macadam Steps (SDCM) | 4-step MacAdam Ellipse |
| CCT Configuration | Single |
| CRI | >80 |
| Lamp/LED Current | 800 mA |
| Lamp/LED voltage | 36 V |
| System Efficiency | 153 lm/W |
| UGR | <22 |
| UGR (Unified Glare Rating) is reported as per AS/NZS 1680.2 using the following design parameters; room reflectance 0.7/0.5/0.2 (C/W/F), ceiling height 2.7m, LLF=0.8 (Nominal) from the corrected UGR table. | |

| LED LIFETIME | |
|---|----------------------------|
| LED Lifetime | >54,000 hrs |
| This is the Reported LED Lifetime in Hours based on TM-21. Ektor does not list the projected or calculated LED lifetime, which is normally longer as TM-21 Addendum B explicitly states "The Calculated and Projected Lp(Dk) are not to be reported". This Lifetime refers to the life of a single LED however the system life is longer since the probability and binomial distribution of all LEDs in the system means that the average led is performing above the specification and compensates for the LEDs falling below. | |
| Ambient Temp (°C) | 25 °C 40 °C |
| L90B10 | 53,000 hrs 53,000 hrs |



| | | |
|---------------|-------------|-------------|
| L80B10 | >54,000 hrs | >54,000 hrs |
| L70B10 | >54,000 hrs | >54,000 hrs |

This rating defines the performance of the led within its lifetime. L relates to lumen depreciation, where the proceeding number gives the resultant lumen output at the end of it reported lifetime. L70, would mean 70% lumen depreciation which means 70% of its initial output and is tested accordingly to TM-21. The B part refers to failures, which can be define as the percentage of LEDs which fall below the L value in the projected lifetime. A value of B10 refers to 10% failure and a value of B50 refers to 50% failure. After the defined lifetime, the system will reach the defined lumen depreciation and the average led failures is defined by the B rating. The B rating is defined in and tested to IEC62717.

| | |
|-------------------------|----------|
| TM-21 Test Hours | 9000 hrs |
|-------------------------|----------|

COLOUR TEMPERATURE

| | |
|------------|--------|
| CCT | 4000 K |
|------------|--------|

| | |
|-------------------------|---------|
| Luminaire Lumens | 4600 lm |
|-------------------------|---------|

All photometric data has a tolerance of $\pm 10\%$. Luminaire lumens refers to the exit lumens or delivered lumens from the luminaire.

DRIVER

| | |
|-----------------|-----|
| Dimmable | Yes |
|-----------------|-----|

| | |
|------------------------|-----|
| Driver Included | Yes |
|------------------------|-----|

| | |
|--------------------------|----|
| Integrated Driver | No |
|--------------------------|----|

| | |
|--------------------|------------------|
| Driver Mode | Constant Current |
|--------------------|------------------|

| | |
|--------------------|---------------------|
| Driver Type | DALI DT6 LED Driver |
|--------------------|---------------------|

DALI DT6 ~ Includes DALI-2 Driver with full support for DT6 allowing flicker free dimming with compliant DALI-2 Application controllers.

| | |
|---------------------------------------|---------|
| Flex & Plug or Lead Length | 2400 mm |
|---------------------------------------|---------|

| | |
|--------------------|------------------|
| Wiring Type | WBC Plug (5 pin) |
|--------------------|------------------|

WBC ~ Supplied with a Wire by click- 5 pin plug, model number LA1025/5

COMPLIANCE

| | |
|----------------------------|---------|
| Product Design Life | 8 years |
|----------------------------|---------|

The product design life relates to the total product life which includes LEDs, drivers and the enclosure. This is different to the LED lifetime which only refers to the economical lifetime of the LEDs at which time the lumen output has dropped below the L Value. The product design life is calculated at the maximum ambient or working temperature of the product and takes into account the Daily Use.

| | |
|------------------|--------|
| Daily Use | 16 hrs |
|------------------|--------|

The Daily Use is the recommended time required to meet the product's design life. Installations can exceed this time, however the product design life will be reduced proportionally.

| | |
|------------------|---|
| Standards | AS/NZS 60598.1 AS/NZS 60598.2.2 AS/NZS 61347.1 AS/NZS 61347.2.13 IEC/TR 62778 IEC 62031 AS/NZS 61535.1 AS CISPR 15 IEC 62386-102 IEC 62386-207 |
|------------------|---|

WARRANTY

| | |
|--------------------------------|-----------------------|
| Commercial Use Warranty | 5 RTB (Total 5 Years) |
|--------------------------------|-----------------------|

| | |
|---------------------------------|-----------|
| Warranty Operating Hours | 30000 hrs |
|---------------------------------|-----------|

This product is provided with a warranty up until the stated warranty period or until the stated warranty operating hours has been reached (whichever occurs first).

DIMENSIONS

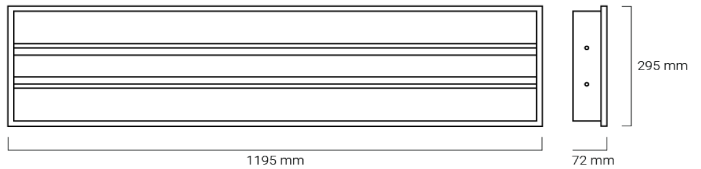
| | |
|-----------------------|-------|
| Product Height | 72 mm |
|-----------------------|-------|

| | |
|-----------------------|---------|
| Product Length | 1195 mm |
|-----------------------|---------|

| | |
|----------------------|--------|
| Product Width | 295 mm |
|----------------------|--------|

LINE DRAWINGS

EV/CURVE/ADV/312



PHOTOMETRICS

EV/CURVE/ADV/AIR/312/30W

