

UMBRA CORE DIFFUSED

Core Diffused Batten, Dual Power, Tri-CCT

FEATURES

- Tri-colour selection
- Selectable output power
- Increased ambient temperature of 40 degrees
- IK06 impact rating
- High efficiency design >110lm/W
- Excellent LED lifetime for energy efficient lighting designs



ORDERING INFORMATION	
Order code	15576
Description	Umbra Core 600mm Diffused LED Emergency Batten - Tri-CCT
Driver Type	Fixed output
Item Code	EV-UMBRA-CORE-DIFF-600-EM

MECHANICAL	
Body Material	Powder coated steel
Diffuser Material	Polycarbonate
Fitting Colour	White
IK Rating	IK06
Installation Type	Surface mount
IP Rating	IP20

ELECTRICAL	
Electrical Rating	Class I
Input Current	0.1 A
Input Frequency	50 Hz
Input voltage	230Vac
In Australia the Input voltage is defined as 230Vac -6%/+10%. This effectively means that the voltage range of these products are 216Vac - 253Vac or 240V +6%	
Maximum Wattage	20 W
Standby Power	1 W

Standby power for non-maintained/switched maintained emergency devices is measured when the light is off and the charger is in standby mode. For maintained emergency devices, standby power is measured when the light is on and the charger is in standby mode. Typically, charging occurs for the first 16 hours after the device is powered or after a battery discharge.

Switch Type	Inline
Working Temp Range	0 to 40 °C

LAMP	
Macadam Steps (SDCM)	5-step MacAdam Ellipse
CCT Configuration	TRI-CCT
CRI	>80
System Efficiency	110 lm/W

LED LIFETIME	
LED Lifetime	>78000 hrs
This is the Reported LED Lifetime in Hours based on TM-21. Ektor does not list the projected or calculated LED lifetime, which is normally longer as TM-21 Addendum B explicitly states "The Calculated and Projected Lp(Dk) are not to be reported". This Lifetime refers to the life of a single LED however the system life is longer since the probability and binomial distribution of all LEDs in the system means that the average led is performing above the specification and compensates for the LEDs falling below.	
TM-21 Test Hours	13000 hrs

COLOUR TEMPERATURE	
CCT	4000 K
LED Wattage	20 W
Luminaire Lumens	2200 lm
All photometric data has a tolerance of ±10%. Luminaire lumens refers to the exit lumens or delivered lumens from the luminaire.	



DRIVER

Dimmable	No
Driver Included	Yes
Integrated Driver	No
Driver Mode	Constant Current
Driver Type	Fixed output
Wiring Type	Re-wireable terminal block (4 pin)

EMERGENCY (EM SUFFIX)

Replacement Battery Code	18096
Emergency Classification	C0:D40, C90:D32
Emergency Duration	90 mins
Emergency Mode	Maintained
Emergency Output Power	2000 mW

COMPLIANCE

Product Design Life	6 years
----------------------------	---------

The product design life relates to the total product life which includes LEDs, drivers and the enclosure. This is different to the LED lifetime which only refers to the economical lifetime of the LEDs at which time the lumen output has dropped below the L Value. The product design life is calculated at the maximum ambient or working temperature of the product and takes into account the Daily Use.

Daily Use	12 hrs
------------------	--------

The Daily Use is the recommended time required to meet the product's design life. Installations can exceed this time, however the product design life will be reduced proportionally.

Standards	AS/NZS 60598.1 AS 60598.2.22 AS/NZS 61347.1 AS/NZS 61347.2.13 AS CISPR 15 AS/NZS 2293.3
------------------	--

WARRANTY

Commercial Use Warranty	5Y return to base on General lighting components First 2Y includes an exclusive onsite warranty
--------------------------------	--

Warranty Operating Hours	15000 hrs
---------------------------------	-----------

This product is provided with a warranty up until the stated warranty period or until the stated warranty operating hours has been reached (whichever occurs first).

DIMENSIONS

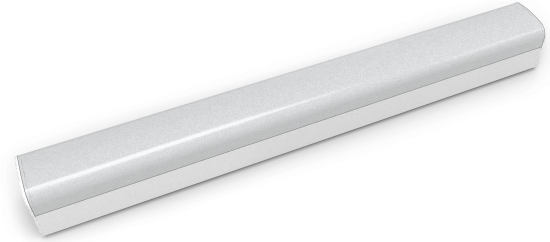
Product Height	70 mm
Product Length	623 mm
Product Width	65 mm

UMBRA CORE DIFFUSED

Core Diffused Batten, Dual Power, Tri-CCT

FEATURES

- Tri-colour selection
- Selectable output power
- Increased ambient temperature of 40 degrees
- IK06 impact rating
- High efficiency design >110lm/W
- Excellent LED lifetime for energy efficient lighting designs



ORDERING INFORMATION	
Order code	15578
Description	Umbra Core 1200mm Diffused LED Emergency Batten - Tri-CCT
Driver Type	Fixed output
Item Code	EV-UMBRA-CORE-DIFF-1200-EM

MECHANICAL	
Body Material	Powder coated steel
Diffuser Material	Polycarbonate
Fitting Colour	White
IK Rating	IK06
Installation Type	Surface mount
IP Rating	IP20

ELECTRICAL	
Electrical Rating	Class I
Input Current	0.2 A
Input Frequency	50 Hz
Input voltage	230Vac
In Australia the Input voltage is defined as 230Vac -6%/+10%. This effectively means that the voltage range of these products are 216Vac - 253Vac or 240V +6%	
Maximum Wattage	40 W
Standby Power	1 W

Standby power for non-maintained/switched maintained emergency devices is measured when the light is off and the charger is in standby mode. For maintained emergency devices, standby power is measured when the light is on and the charger is in standby mode. Typically, charging occurs for the first 16 hours after the device is powered or after a battery discharge.

Switch Type	Inline
Working Temp Range	0 to 40 °C

LAMP	
Macadam Steps (SDCM)	5-step MacAdam Ellipse
CCT Configuration	TRI-CCT
CRI	>80
System Efficiency	110 lm/W

LED LIFETIME	
LED Lifetime	>78000 hrs
This is the Reported LED Lifetime in Hours based on TM-21. Ektor does not list the projected or calculated LED lifetime, which is normally longer as TM-21 Addendum B explicitly states "The Calculated and Projected Lp(Dk) are not to be reported". This Lifetime refers to the life of a single LED however the system life is longer since the probability and binomial distribution of all LEDs in the system means that the average led is performing above the specification and compensates for the LEDs falling below.	
TM-21 Test Hours	13000 hrs

COLOUR TEMPERATURE	
CCT	4000 K
LED Wattage	40 W
Luminaire Lumens	4650 lm
All photometric data has a tolerance of ±10%. Luminaire lumens refers to the exit lumens or delivered lumens from the luminaire.	



DRIVER

Dimmable	No
Driver Included	Yes
Integrated Driver	No
Driver Mode	Constant Current
Driver Type	Fixed output
Wiring Type	Re-wireable terminal block (4 pin)

EMERGENCY (EM SUFFIX)

Replacement Battery Code	18096
Emergency Classification	C0:D50, C90:D32
Emergency Duration	90 mins
Emergency Mode	Maintained
Emergency Output Power	2000 mW

COMPLIANCE

Product Design Life	6 years
----------------------------	---------

The product design life relates to the total product life which includes LEDs, drivers and the enclosure. This is different to the LED lifetime which only refers to the economical lifetime of the LEDs at which time the lumen output has dropped below the L Value. The product design life is calculated at the maximum ambient or working temperature of the product and takes into account the Daily Use.

Daily Use	12 hrs
------------------	--------

The Daily Use is the recommended time required to meet the product's design life. Installations can exceed this time, however the product design life will be reduced proportionally.

Standards	AS/NZS 60598.1 AS 60598.2.22 AS/NZS 61347.1 AS/NZS 61347.2.13 AS CISPR 15 AS/NZS 2293.3
------------------	--

WARRANTY

Commercial Use Warranty	5Y return to base on General lighting components First 2Y includes an exclusive onsite warranty
--------------------------------	--

Warranty Operating Hours	15000 hrs
---------------------------------	-----------

This product is provided with a warranty up until the stated warranty period or until the stated warranty operating hours has been reached (whichever occurs first).

DIMENSIONS

Product Height	70 mm
Product Length	1223 mm
Product Width	65 mm