



250W Modular LED Floodlight 60DEG Beam Angle 5000K

VBLFL-600-250W4-50



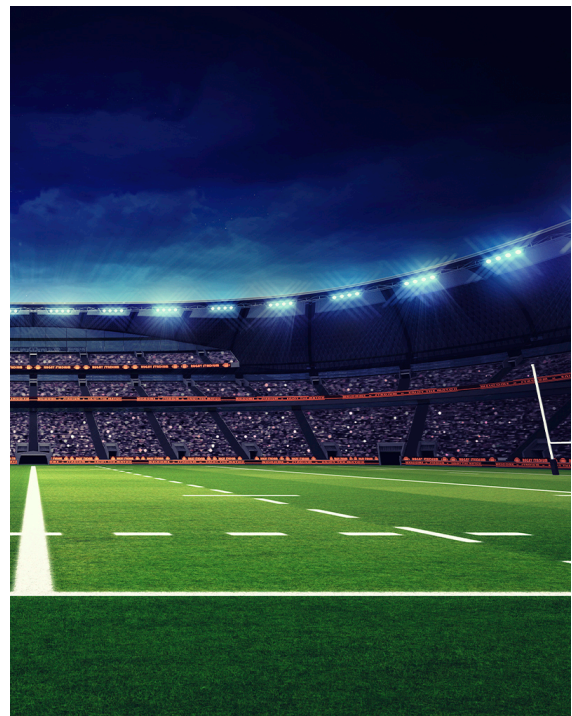
VIBE 600 Series Modular Stadium Lights range from 250W to 1000W and are equipped with Integral Drivers. (Remote drivers and weatherproof drivers can be supplied upon request.) Please contact your Sales Representative to discuss your specific project requirements for a tailored stadium solution.

Features & Benefits

- Also available in 500W / 750W / 1000W
- Temperature colour: Natural White
- * All models come with Integral Drivers*
- Equipped with high voltage LED Chips
- Modular design
- IP66 rated
- 50,000 hour lifespan
- 5 year warranty

*Remote drivers and weatherproof enclosures can be supplied upon request.

- Cable lengths to be advised by customer - lead times will apply.



250W Modular LED Floodlight 60DEG Beam Angle 5000K

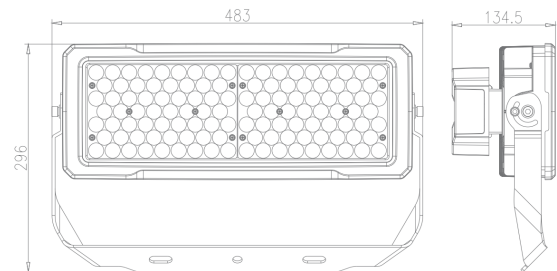
VBLFL-600-250W4-50

Specifications

SKU	VBLFL-600-250W4-50
Luminaire efficacy	130
EAN	9340994021034
Weight	7.3
Light Colour	Natural White
Wattage	250
Lumen output	32500
IP rating	66
IK Rating	10
CRI	70
Beam Angle	60
Trim colour	Black
Length	296
Width	134
Height	483
Lifespan	50000
Warranty	5
Mounting type	Surface
Accessories	Base, Laser, Glare Guard & Slip Filter
Lamp Type	LED
Input voltage	220V-240V AC 50HZ
Wiring method	Hardwire
Weatherproof	Weatherproof
Working temperature	-20°C ~ 45°C
Kelvin	5000K



Dimensional Drawings



Photometric information available upon request.



500W Modular LED Floodlight 60Deg Beam Angle 5000K

VBLFL-600-500W4-50



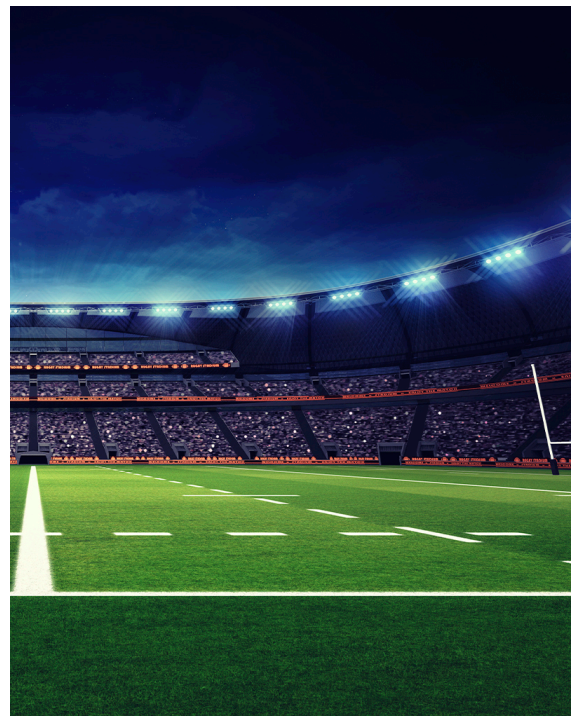
VIBE 600 Series Modular Stadium Lights range from 250W to 1000W and are equipped with Integral Drivers. (Remote drivers and weatherproof drivers can be supplied upon request.) Please contact your Sales Representative to discuss your specific project requirements for a tailored stadium solution.

Features & Benefits

- Also available in 250W / 750W / 1000W
- Temperature colour: Natural White
- * All models come with Integral Drivers*
- Equipped with high voltage LED Chips
- Modular design
- IP66 rated
- 50,000 hour lifespan
- 5 year warranty

*Remote drivers and weatherproof enclosures can be supplied upon request.

- Cable lengths to be advised by customer - lead times will apply.



500W Modular LED Floodlight 60Deg Beam Angle 5000K

VBLFL-600-500W4-50

Specifications

SKU	VBLFL-600-500W4-50
Luminaire efficacy	130
EAN	9340994021041
Weight	20.6
Light Colour	Natural White
Wattage	500
Lumen output	65000
IP rating	66
IK Rating	10
CRI	70
Beam Angle	60
Trim colour	Black
Length	563
Width	136
Height	510
Lifespan	50000
Warranty	5
Mounting type	Surface
Accessories	Base, Laser, Glare Guard & Slip Filter
Lamp Type	LED
Input voltage	220V-240V AC 50HZ
Wiring method	Hardwire
Weatherproof	Weatherproof
Working temperature	-20°C ~ 45°C
Kelvin	5000K



Dimensional Drawings



Photometric information available upon request.



750W Modular LED Floodlight 60DEG Beam Angle 5000K

VBLFL-600-750W4-50



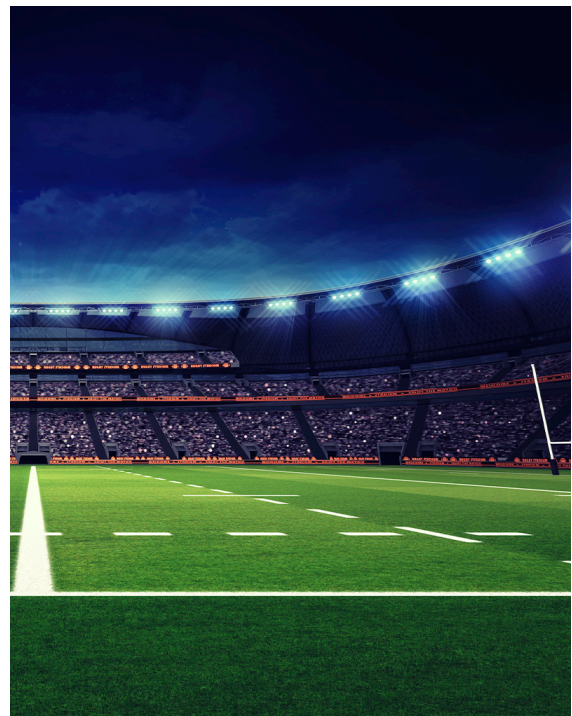
VIBE 600 Series Modular Stadium Lights range from 250W to 1000W and are equipped with Integral Drivers. (Remote drivers and weatherproof drivers can be supplied upon request.) Please contact your Sales Representative to discuss your specific project requirements for a tailored stadium solution.

Features & Benefits

- Also available in 250W / 500W / 1000W
- Temperature colour: Natural White
- * All models come with Integral Drivers*
- Equipped with high voltage LED Chips
- Modular design
- IP66 rated
- 50,000 hour lifespan
- 5 year warranty

*Remote drivers and weatherproof enclosures can be supplied upon request.

- Cable lengths to be advised by customer - lead times will apply.



750W Modular LED Floodlight 60DEG Beam Angle 5000K

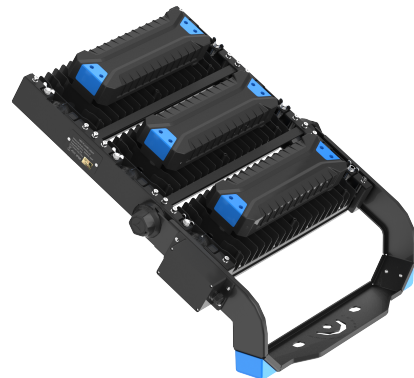
VBLFL-600-750W4-50

Specifications

SKU	VBLFL-600-750W4-50
Luminaire efficacy	130
EAN	9340994021058
Weight	28
Light Colour	Natural White
Wattage	750
Lumen output	97500
IP rating	66
IK Rating	10
CRI	70
Beam Angle	60
Trim colour	Black
Length	764
Width	136
Height	510
Lifespan	50000
Warranty	5
Mounting type	Surface
Accessories	Base, Laser, Glare Guard & Slip Filter
Lamp Type	LED
Input voltage	220V-240V AC 50HZ
Wiring method	Hardwire
Weatherproof	Weatherproof
Working temperature	-20°C ~ 45°C
Kelvin	5000K



Dimensional Drawings



Photometric information available upon request.