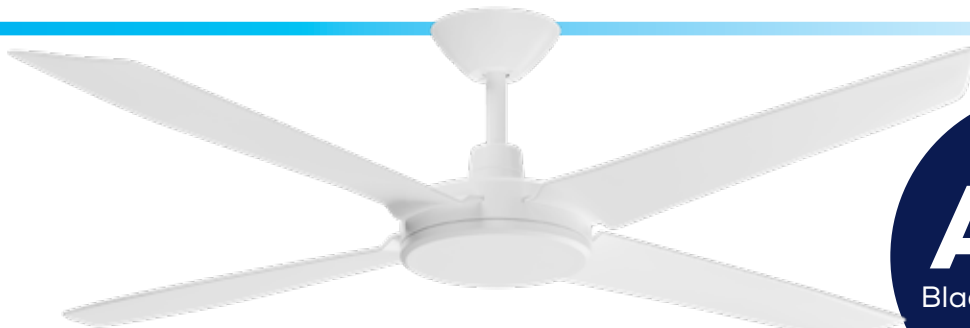


**6 YEAR
WARRANTY**

3 YEARS IN HOME
12 MONTHS REMOTE & RECEIVER

ENVIRO

4 Blade 52" 1320mm



Premium
ABS
Blade Construction
100%
RUST FREE



WHISPER QUIET OPERATION

Modern efficient design

ENERGY SAVING DC MOTOR

75% less energy than an AC fan

6 SPEED REMOTE

Timer function and summer/winter mode

14,188m³/hr AIRFLOW

40% more airflow than a standard fan

18W TRI COLOUR LED LIGHT

2370lm with three colours Warm/Daylight/Cool

**52
INCH**

1320mm

**RUST
FREE**

ABS

**ULTRA
QUIET**

ULTRA
QUIET

**14,188m³/hr
AIRFLOW**

14,188m³/hr
AIRFLOW

**ENERGY
EFFICIENT
DC MOTOR**

ENERGY
EFFICIENT
DC MOTOR

**Covered Use
INDOOR +
OUTDOOR
USAGE**

INDOOR +
OUTDOOR
USAGE

**WALL
CONTROLLER
Summer/Winter Mode
6 SPEED**

WALL
CONTROLLER
Summer/Winter Mode
6 SPEED

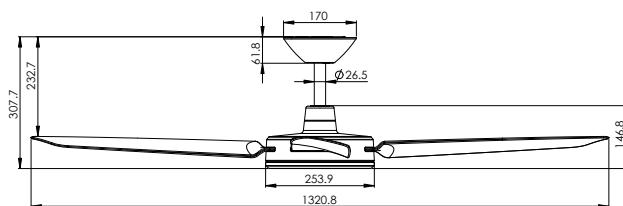
**REMOTE
INCLUDED**

REMOTE
INCLUDED

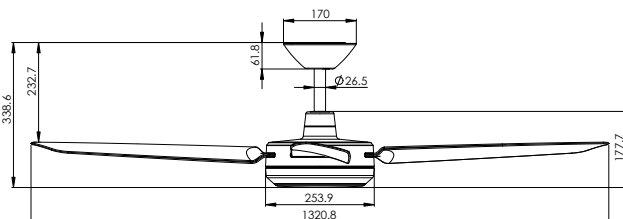
Airflow Specifications

SPEED 1	TBA	5,000 m ³ /hr	73 RPM
SPEED 2			
SPEED 3			
SPEED 4			
SPEED 5			
SPEED 6	25W	14,188 m ³ /hr	211 RPM

Dimensions



Without LED Light



With LED Light

Includes

- 1 x Ceiling Fan (With or Without CCT LED Light)
- 1 x Remote Control
- 1 x Instruction Manual
- 1 x Hardware Pack
- 1 x Hangsure Canopy Bracket

Available Extras

- 900mm Extension Rod
- DC Wall Controller
- Raked Ceiling Kit



**6 YEAR
WARRANTY**

3 YEARS IN HOME
12 MONTHS REMOTE & RECEIVER

ENVIRO

4 Blade 52" 1320mm

Features

WHISPER QUIET OPERATION

Modern efficient design

ENERGY SAVING DC MOTOR

75% less energy than an AC fan

6 SPEED REMOTE

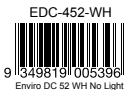
Timer function and summer/winter mode

14,188m³/hr AIRFLOW

40% more airflow than a standard fan

18W TRI COLOUR LED LIGHT

2370lm with three colours Warm/Daylight/Cool



EDC-452-WH
White Without Light



EDC-452-BK
Matt Black Without Light



EDC-452-WH-L
White Optional LED Light Kit



EDC-452-BK-L
Black Optional LED Light Kit

Specifications

Model Name	Enviro
Model Numbers	EDC-452-WH EDC-452-BK EDC-452-WH-L EDC-452-BK-L
Colours Available	White and Matt Black
Warranty	6 Years (3 Years In-Home, 3 Year Parts Only)
Diameter	1320mm (52")
Ceiling to Blades	232.7mm
Material	ABS - Non Corrosive Plastic
Blade Pitch	13°
Raked Ceiling Compatibility	Maximum 38° (with accessory)
Installation Locations	Indoor/Outdoor Undercover
Motor Type	DC
Light Kit	18W CCT 3000K / 4000K / 6000K 1443lm / 2370lm / 2123lm
Weight	5.6 kg with light 6.1 kg without light
Shipping	
Package Dimensions	615mm x 315mm x 290mm
Package Weight	6.5 kg with light 7.1 kg without light

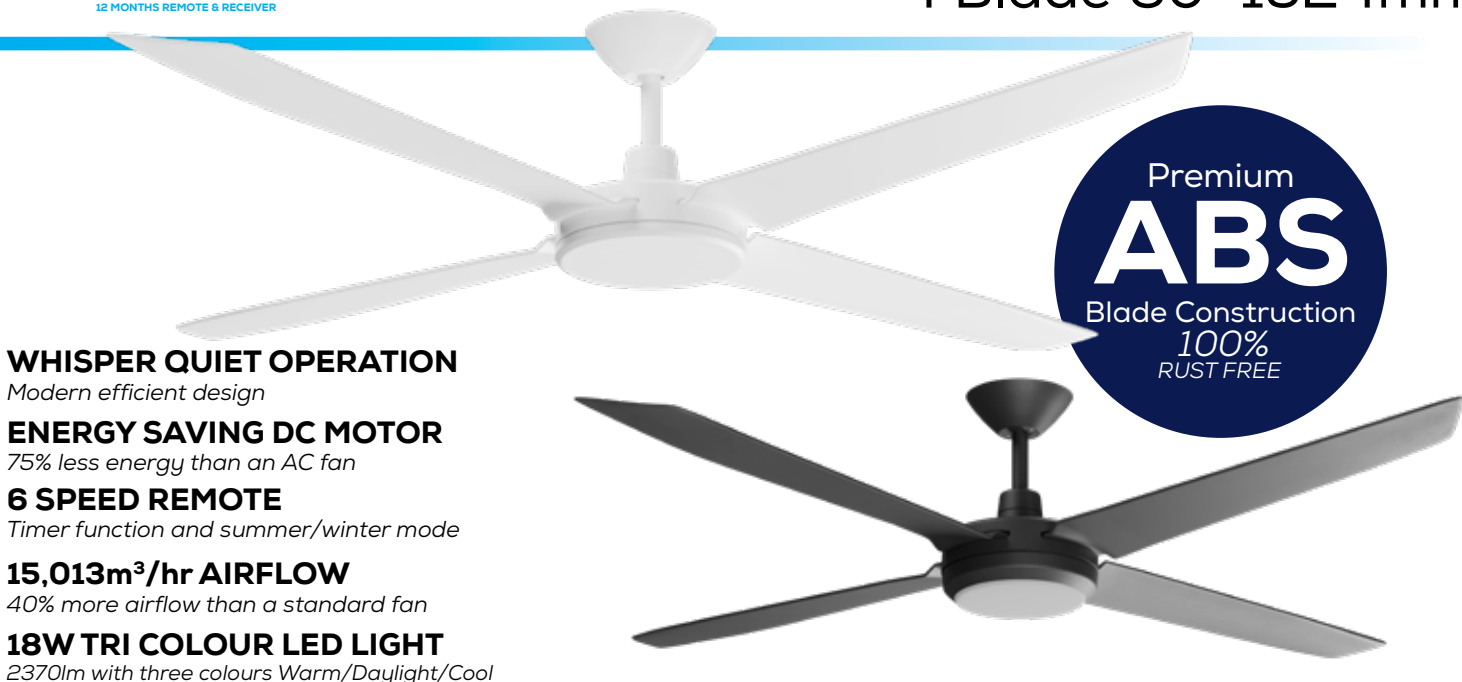


**6 YEAR
WARRANTY**

3 YEARS IN HOME
12 MONTHS REMOTE & RECEIVER

ENVIRO

4 Blade 60" 1524mm



WHISPER QUIET OPERATION

Modern efficient design

ENERGY SAVING DC MOTOR

75% less energy than an AC fan

6 SPEED REMOTE

Timer function and summer/winter mode

15,013m³/hr AIRFLOW

40% more airflow than a standard fan

18W TRI COLOUR LED LIGHT

2370lm with three colours Warm/Daylight/Cool

**60
INCH**
1530mm

**RUST
FREE**
ABS

**ULTRA
QUIET**

**15,013m³/hr
AIRFLOW**

**ENERGY
EFFICIENT
DC MOTOR**

Covered Use
**INDOOR +
OUTDOOR
USAGE**

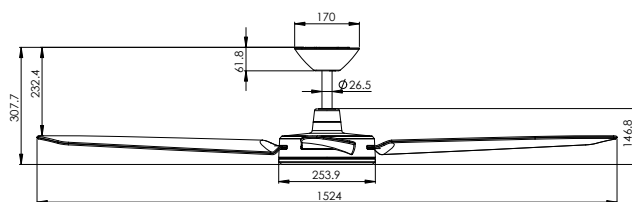
**WALL
CONTROLLER**
Summer/Winter Mode
6 SPEED

**REMOTE
INCLUDED**

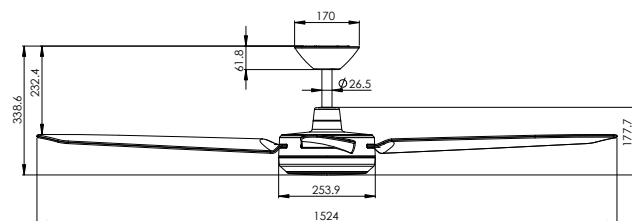
Airflow Specifications

SPEED 1	TBA	6,265 m ³ /hr	71RPM
SPEED 2			
SPEED 3			
SPEED 4			
SPEED 5			
SPEED 6	35W	15,013m ³ /hr	192RPM

Dimensions



Without LED Light



With LED Light

Includes

- 1 x Ceiling Fan (With or Without CCT LED Light)
- 1 x Remote Control
- 1 x Instruction Manual
- 1 x Hardware Pack
- 1 x Hangsure Canopy Bracket

Available Extras

- 900mm Extension Rod
- DC Wall Controller
- Raked Ceiling Kit



**6 YEAR
WARRANTY**

3 YEARS IN HOME
12 MONTHS REMOTE & RECEIVER

ENVIRO

4 Blade 60" 1524mm

Features

WHISPER QUIET OPERATION

Modern efficient design

ENERGY SAVING DC MOTOR

75% less energy than an AC fan

6 SPEED REMOTE

Timer function and summer/winter mode

15,013m³/hr AIRFLOW

40% more airflow than a standard fan

18W TRI COLOUR LED LIGHT

2370lm with three colours Warm/Daylight/Cool



9 349819 005471
Enviro DC 60 WH No Light

EDC-460-WH

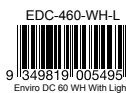
White Without Light



9 349819 005488
Enviro DC 60 BK No Light

EDC-460-BK

Matt Black Without Light



9 349819 005495
Enviro DC 60 WH With Light

EDC-460-WH-L

White Optional LED Light Kit



9 349819 005501
Enviro DC 60 BK With Light

EDC-460-BK-L

Black Optional LED Light Kit

Specifications

Model Name Enviro

Model Numbers
EDC-460-WH
EDC-460-BK
EDC-460-WH-L
EDC-460-BK-L

Colours Available White and Matt Black

Warranty 6 Years
(3 Years In-Home, 3 Year Parts Only)

Diameter 1530mm (60")

Ceiling to Blades 232.4mm

Material ABS - Non Corrosive
Plastic

Blade Pitch 13°

**Raked Ceiling
Compatibility** Maximum 38°
(with accessory)

**Installation
Locations** Indoor/Outdoor
Undercover

Motor Type DC

Light Kit 18W CCT
3000K / 4000K / 6000K
1443lm / 2370lm / 2123lm

Weight 7.03 kg with light
6.44 kg without light

Shipping

**Package
Dimensions** 730mm x 290mm x 315mm

Package Weight 8.13 kg with light
7.54 kg without light

