

LED SMART GU10 GLOBE

SMTGU10 DIMMABLE TRI-CCT + RGB

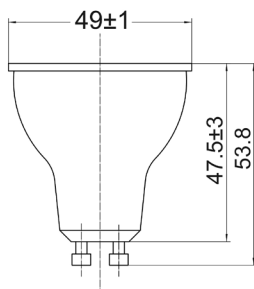
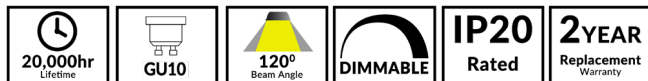


NO HUB
REQUIRED



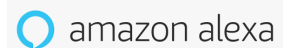
Technical Features:

- Input voltage range: 220-240V 50/60Hz
- Shade & diffuser: plastic
- LED chips: 20pcs SMD2835
- CRI: ≥80
- Power factor: 0.5
- Ambient temperature: -20 to 30°C
- App: control all functions via Tuya app on smart devices
- Manual: on/off control via normal wall switch
- Dimmable only via app or voice control through Amazon Alexa, Google Home and other compatible voice activated control devices (Not compatible with wall switch dimmer)
- Setup requires WiFi with Internet connection
- Suitable for 2-way switching
- Not suitable for use with sensors



Additional SMART Features:

- Tuneable RGB colour spectrum (up to 14 million colours)
- Tuneable colour temperature (3000K warm white through to 6500K daylight)
- Works with any 2.4GHz enabled WiFi network (note: will not currently pair with 5.0GHz bandwidth.) or Bluetooth LE 4.2
- Create schedules and timing to automate your home
- Control from anywhere via app or voice control using Alexa Hubs, Google Home and other compatible devices
- Compatible with all Tuya Powered apps



| PART NO. | DESCRIPTION | BASE | KELVIN | LUMENS | WATT | PRODUCT DIMENSIONS | WEIGHT | BOX DIMENSIONS | CARTON QTY |
|----------|-------------------------------------|------|-----------------|---|------|--------------------|--------|----------------|------------|
| SMTGU101 | GLOBE LED SMART GU10 5W RGB TRI CCT | GU10 | RGB+ 3000-6000K | 360-450LM- 3000K 400-500LM- 4000K 400-500LM-6000K | 5W | Ø50X53.8mm | 0.02kg | 6x5x6cm | 1/10/100 |