



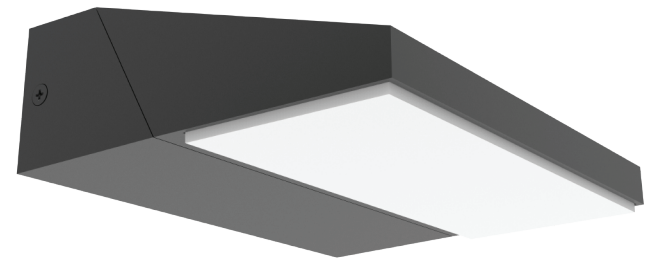
PLANA SERIES

Exterior LED Adjustable Surface Mounted Wall Light

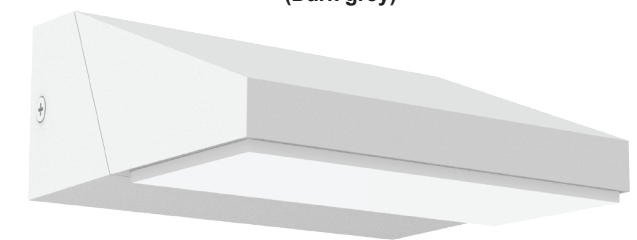
- Input voltage: 100-240V AC 50/60Hz
- Inbuilt Constant Current driver included
- Housing & heatsink: aluminium
- Diffuser: UV resistant PC
- Back plate: aluminium
- Degree of Swivel: 180°
- LED chips: 12pcs 2835
- Ambient temperature: -20 to 50°C
- Not suitable for dimming
- Suitable for 2 way switching
- Suitable for use with PIR sensor



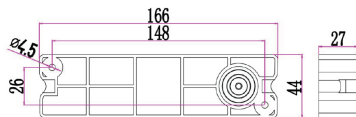
Part No.	PLANA01 & PLANA02
Description	WALL LED S/M Dark Grey/ WH Adjustable Wedge
Material	Aluminium & PC
Kelvin	3000K
Lumens	650lm
Wattage	13W
LED chips	12PCS 2835
Power factor	>0.9
CRI	>80
Dimensions	Please see line drawings
Back plate	166x44x27mm
Weight	0.96kg
Box	18.5x15x6.5cm
Carton QTY	1/8



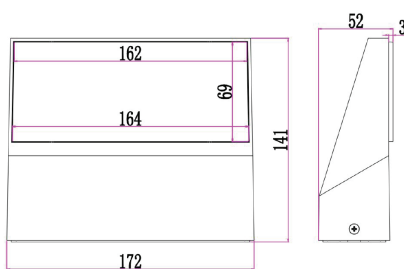
PLANA01
(Dark grey)



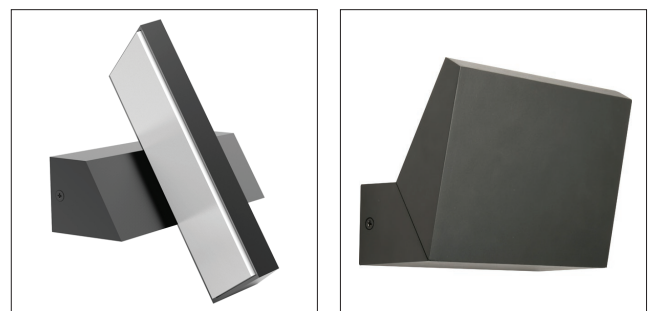
PLANA02
(White)



Back plate line drawing



Line drawing



180° Swivel Degree