



## OPTI-REC LED Mounting Profile

### Description

Introducing the OPTI-REC surface mounting profile system. The OPTI-REC is specifically designed for the Domus range of LED strip lighting. This aluminium mounting profile system incorporated extruded profile complete with a flat opal or clear colour polycarbonate diffuser. The key features of the OPTI-REC is the ability to not only on conceal the LED strip lighting but also keep the strip lighting linear. Also, the OPTI-REC keeps LEDs free from foreign objects and vapours which may damage the LEDs. A simple yet very contemporary LED recessed mounted profile ideally suited to under bench mounting, wardrobes or laundry applications.



### Specification Features

Installation:	Recessed mounted
Material:	Extruded aluminium 6063
Finish:	Natural clear anodised
Diffuser:	Curved (PC) Opal or clear colour
Length (mm):	3000mm continuous*
Size (mm):	Profile (W) 26.7mm (H) 16.39mm
Accessories (each):	End caps (silver) and spring clips**
Special:	Custom powder coated colour upon request***
Driver Installation:	Remote driver required (not included)

\* Profile sold per meter. Can be cut to suit any length.  
 \*\* Accessories to be ordered separately.  
 \*\*\* Special powder coat finishes upon request. Surcharges apply.



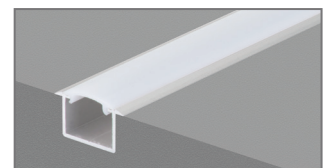
Brushed Aluminium Finish



White Finish

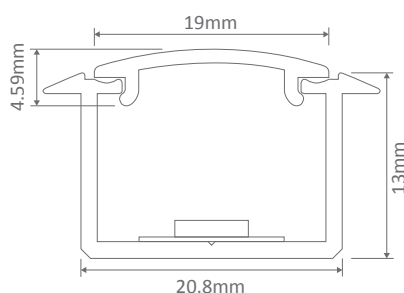
### Compatible LED Strip Lighting

7.2	14.4	19.2
•	•	•



Simulation

### Diagrams / Additional



Item No.	Variant			Details
	Alu	Blk	Wht	
OPTI-REC	22005	22064	22065	Sold per 1 metre