

### FEATURES



- Microwave motion detection
- Daylight harvesting
- Adjustable detection area
- Simple plug-and-play installation
- Retrofittable modular design

### WARRANTY

- Five years (subject to terms and conditions)

### COMPATIBILITY

- Sandy Oyster (181003 and 181004)
- Unit Bunker (281003 and 281004)
- Fortlite Bunker (281005)

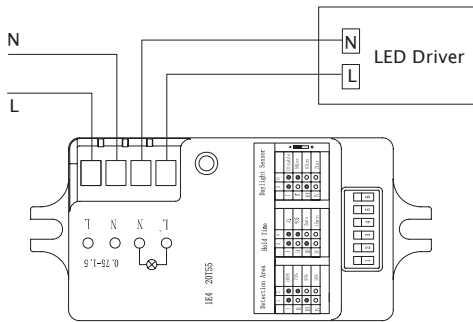
| CERTIFICATION   | IP RATING   |
|---|---|
|  |  |

| Technical Data        |  |
|-----------------------|--|
| Order code            | 283059   |
| Model no.             | ECMMSB1  |
| Operating voltage     | 220~240 VAC 50/60Hz                                    |
| Switching capacity    | Max.400W (Control gear) ; Max.800W (Incandescent lamp) |
| Stand-by power        | ≤0.5W  |
| Operating temperature | -20°C~+55°C  |
| Detection area        | 10%/50%/75%/100%                                       |
| Hold time             | 5s/40s/5min/15min                                      |
| Daylight threshold    | 2Lux/10Lux/50Lux/Disable                               |
| Microwave frequency   | 5.8GHz±75MHz   |
| Mounting height       | Max.6m/19.68ft   |
| *Detection range      | Max.∅14m/45.92ft                                       |

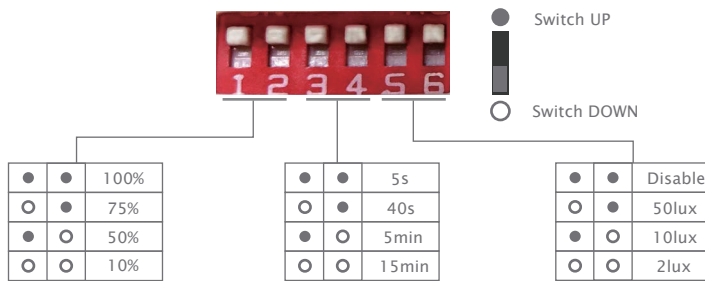
\*Detection range as reference only, may varied in different environment



## Wiring diagram



## Settings



### Detection area

In this area, movement will be detected and able to trigger the sensor. 100% detection area is also known as the strong sensitivity.

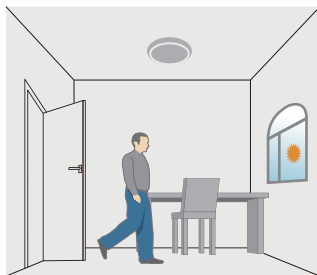
### Hold-time

The period of light keeping 100% brightness after moving objects leave the detection area.

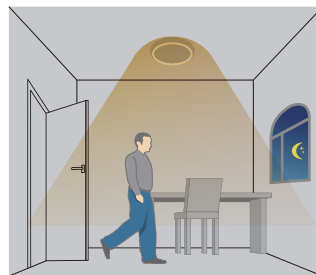
### Daylight threshold

Definition of the ambient brightness; only when the ambient brightness is lower than the preset specific lux amount, the sensor will work; when it's preset as "disable", the sensor works everytime it detects motion regardless the ambient brightness.

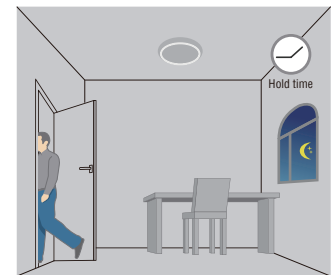
## Function demo-on/off control



With sufficient daylight, even when motion detected, light remains OFF.



With insufficient daylight, when motion detected, light ON.



After the last detection and the present hold time elapsed, light OFF.