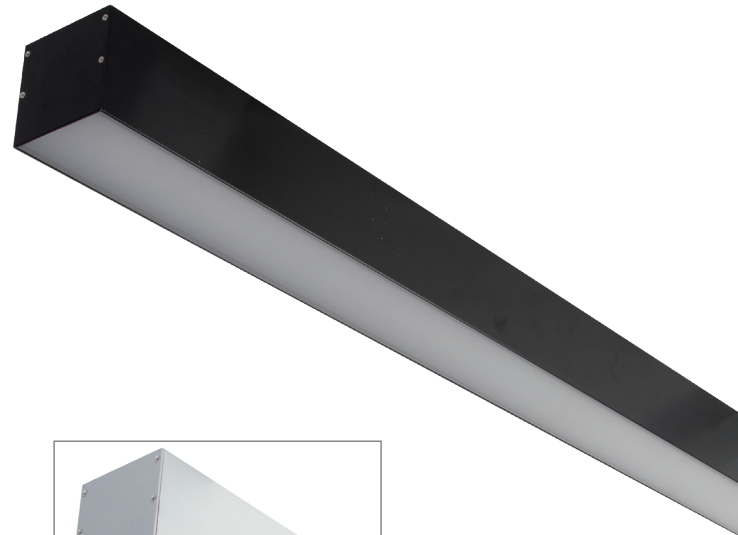


MAX-75-SM 1M LED Profile



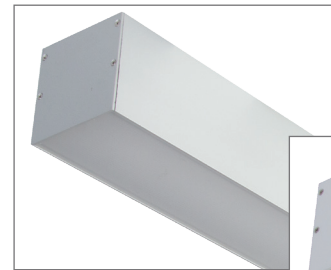
Description

The MAX-75 Surface Mounted profile is designed to suit commercial and residential applications, this profile system incorporates an extruded aluminium body with flat PMMA diffuser, and Osram Led boards. The system offers many additional options such as Dali dimming and emergency upon request.

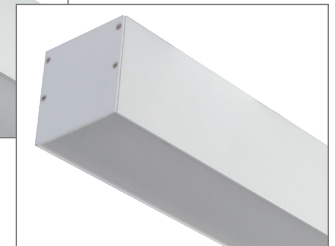


Specification Features

Input Voltage:	240V
Power (W):	17.3W/Per Metre
IP rating (IP):	20
Lumens (lm):	Warm White 3000K - 2466lm Neutral White 4000K - 2600lm
LED type:	Osram LED Boards
CCT:	3000K - 4000K
CRI:	≥80
Beam angle (°):	120°
Dimmable:	No**
Lifespan (hrs):	50,000hrs
Installation:	Ceiling Mounted
Material:	Extruded 6063 aluminium
Finish:	Clear anodised, black or white powder coat finish
Diffuser:	Flat high output opal-frost
Length:	Sold per metre*
Size (mm)	Profile (W) 75mm x (H) 75mm
Available Upon Request:	<ul style="list-style-type: none"> High Output LED Boards Intergrated Emergency



Aluminium Finish



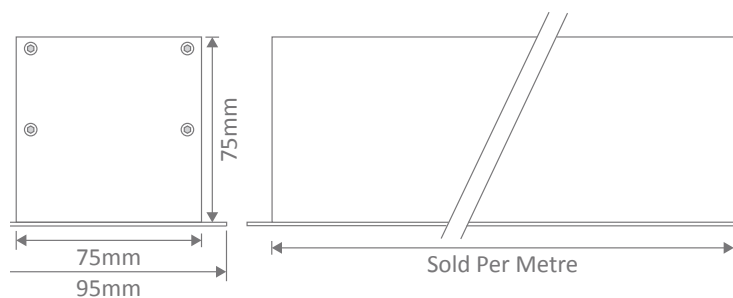
White Finish

Note: This product is made to order and may have a lead time.

* Profile can be cut to any length required.

** Dali and 0-10V dimming available upon request

Diagrams / Additional



Item No.	Variant			CCT
	Blk	Wht	Alu	
MAX-75-SM	22364	22368	22360	3000K
	22365	22369	22361	4000K
	Dali			
	22614	22618	22610	3000K
	22615	22619	22611	4000K
	0-10V			
	22616	22620	22612	3000K
	22617	22621	22613	4000K