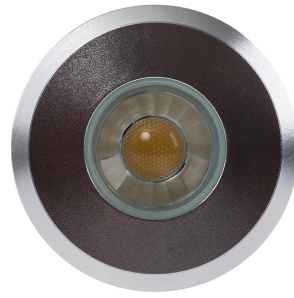


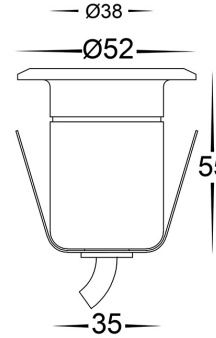
PRODUCT SPECIFICATIONS

Name: Elite
Material: Aluminium
Colour: Matt Black or Matt Silver
IP Rating: IP65
Lamp Base: Built in LED
CRI: ≥80
Cable Length: 300mm
Wiring: Parallel
Dimmable: No
Warranty: 2 Years Replacement**

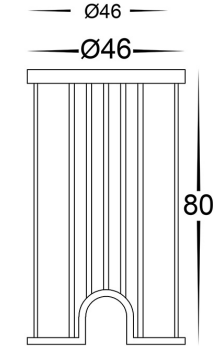


DIMENSIONS

Cutout without Canister



Cutout with Canister



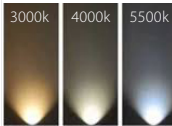
APPROVALS



IP RATING

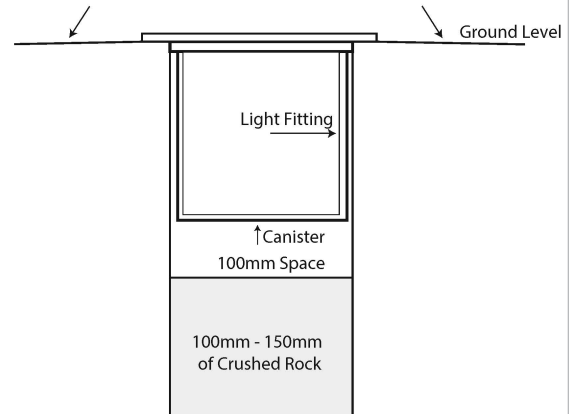


COLOUR TEMPERATURE



INSTALLATION WITH ADEQUATE DRAINAGE

Slight decline on Ground level to allow for water to run away from fitting



Product Ordering

IMAGE	PART NUMBER	COLOURTEMP	LUMENS	INPUT	BEAM ANGLE	INCLUDED LED
	HV2881C-BLK	5500k	270lm	12v DC	36°	3w Built in LED
	HV2881N-BLK	4000k	250lm			
	HV2881W-BLK	3000k	240lm			
	HV2881C-SLV	5500k	270m	12v DC	36°	3w Built in LED
	HV2881N-SLV	4000k	250lm			
	HV2881W-SLV	3000k	240lm			

12v DC models must be used with suitable 12v DC LED Driver

* Lumen output measured at source

** See Warranty Terms and Conditions for more information

For more information contact Havit Lighting

ADDRESS:
 143 Beauchamp Road
 Matraville NSW 2036
 Australia

Tel: 02 9381 8300
 Fax: 02 9666 8881
 Email: sales@havit.com.au
 web: www.havit.com.au

Aluminium Inground or Deck Lights



PRODUCT SPECIFICATIONS

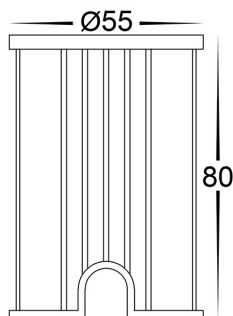
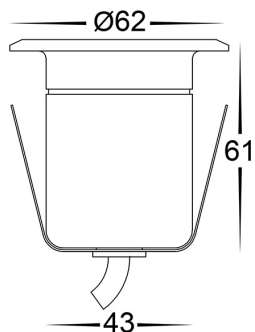
Name: Elite
Material: Aluminium
Colour: Matt Black or Matt Silver
IP Rating: IP65
Lamp Base: Built in LED
CRI: ≥80
Cable Length: 300mm
Wiring: Parallel
Dimmable: No
Warranty: 2 Years Replacement**



DIMENSIONS

Cutout without Canister
 — Ø51 —

Cutout with Canister
 — Ø55 —



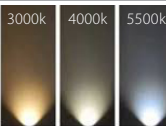
APPROVALS



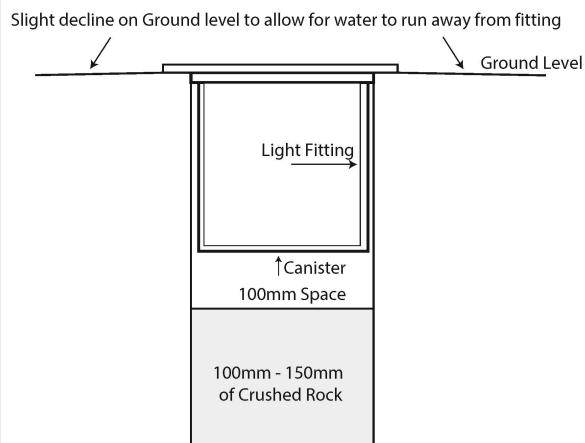
IP RATING



COLOUR TEMPERATURE



INSTALLATION WITH ADEQUATE DRAINAGE



Product Ordering

IMAGE	PART NUMBER	COLOURTEMP	LUMENS	INPUT	BEAM ANGLE	INCLUDED LED
	HV2882C-BLK	5500k	450lm	12v DC	36°	5w Built in LED
	HV2882N-BLK	4000k	420lm			
	HV2882W-BLK	3000k	400lm			
	HV2882C-SLV	5500k	450lm	12v DC	36°	5w Built in LED
	HV2882N-SLV	4000k	420lm			
	HV2882W-SLV	3000k	400lm			

12v DC models must be used with suitable 12v DC LED Driver

* Lumen output measured at source

** See Warranty Terms and Conditions for more information

For more information contact Havit Lighting

ADDRESS:
 143 Beauchamp Road
 Matraville NSW 2036
 Australia

Tel: 02 9381 8300
 Fax: 02 9666 8881
 Email: sales@havit.com.au
 web: www.havit.com.au