

316 Stainless Steel Round Inground Lights

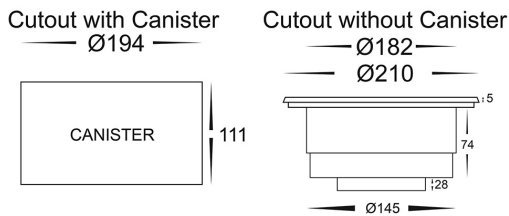


PRODUCT SPECIFICATIONS

Name: Split
Material: 316 Stainless Steel + Aluminium
Colour: Stainless Steel
IP Rating: IP67
IK Rating: IK10
Trafficable: 1000kg
Lamp Base: Built in LED
CRI: ≥80
Cable Length: 300mm
Wiring: Parallel
Dimmable: No
Warranty: 2 Years Replacement**



DIMENSIONS



OPTIONAL ACCESSORIES

HV1847-FSH
 SCREW DOWN FACE



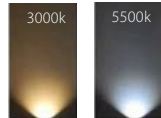
APPROVALS



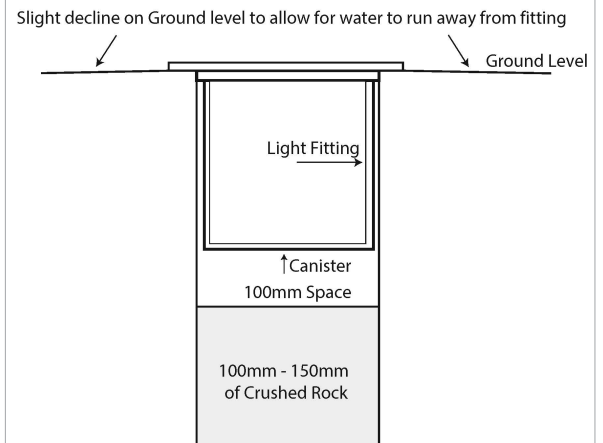
IP RATING



COLOUR TEMPERATURE



INSTALLATION WITH ADEQUATE DRAINAGE



Product Ordering

IMAGE	PART NUMBER	COLOURTEMP	LUMENS	INPUT	BEAM ANGLE	INCLUDED LED
	HV1847C	5500K	1900lm	12v DC	6°	Built in 24w LED
	HV1847W	3000K	1600lm	12v DC	6°	Built in 24w LED

12v DC models must be used with suitable 12v DC LED Driver

* Lumen output measured at source

** See Warranty Terms and Conditions for more information

For more information contact Havit Lighting

ADDRESS:
 143 Beauchamp Road
 Matraville NSW 2036
 Australia

Tel: 02 9381 8300
 Fax: 02 9666 8881
 Email: sales@havit.com.au
 web: www.havit.com.au

316 Stainless Steel Round Inground Lights

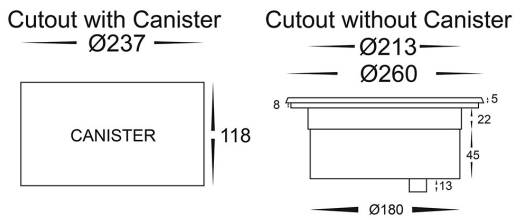


PRODUCT SPECIFICATIONS

Name: Split
Material: 316 Stainless Steel
Colour: Stainless Steel
IP Rating: IP67
IK Rating: IK10
Trafficable: 1000kg
Lamp Base: Built in LED
CRI: ≥80
Cable Length: 300mm
Wiring: Parallel
Dimmable: No
Warranty: 2 Years Replacement**



DIMENSIONS



OPTIONAL ACCESSORIES

HV1845-FSH
 SCREW DOWN FACE



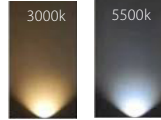
APPROVALS



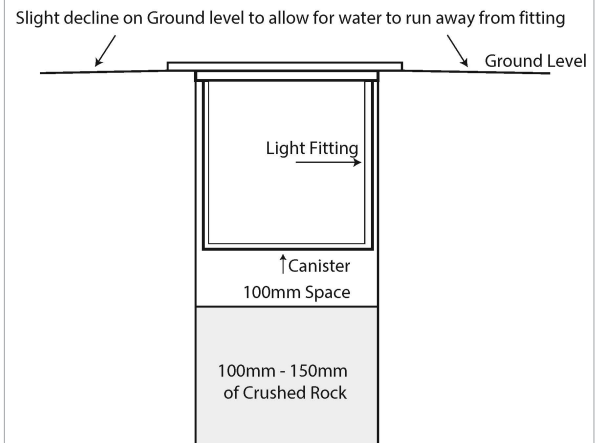
IP RATING



COLOUR TEMPERATURE



INSTALLATION WITH ADEQUATE DRAINAGE



Product Ordering

IMAGE	PART NUMBER	COLOURTEMP	LUMENS	INPUT	BEAM ANGLE	INCLUDED LED
	HV1845C	5500K	1350lm	12v DC	60°	Built in 18w LED
	HV1845W	3000K	1200lm	12v DC	60°	Built in 18w LED

12v DC models must be used with suitable 12v DC LED Driver

* Lumen output measured at source

** See Warranty Terms and Conditions for more information

For more information contact Havit Lighting

ADDRESS:
 143 Beauchamp Road
 Matraville NSW 2036
 Australia

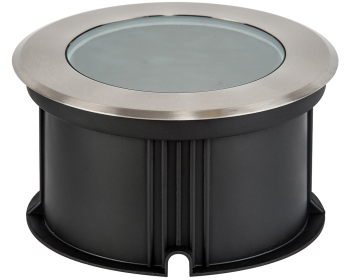
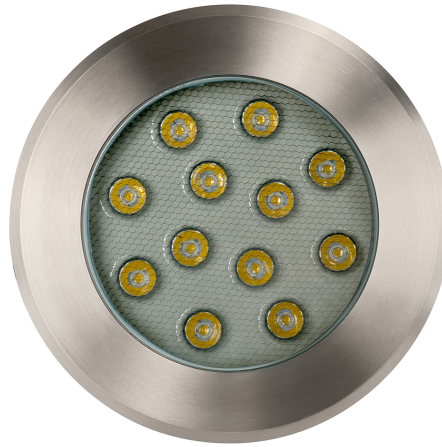
Tel: 02 9381 8300
 Fax: 02 9666 8881
 Email: sales@havit.com.au
 web: www.havit.com.au

316 Stainless Steel Round Inground Lights

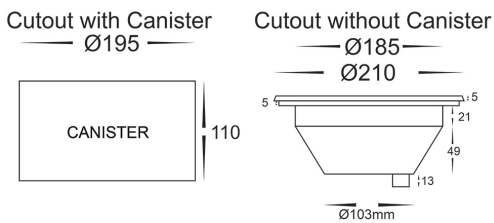


PRODUCT SPECIFICATIONS

Name: Split
Material: 316 Stainless Steel
Colour: Stainless Steel
IP Rating: IP67
IK Rating: IK10
Trafficable: 1000kg
Lamp Base: Built in LED
CRI: ≥80
Cable Length: 300mm
Wiring: Parallel
Dimmable: No
Warranty: 2 Years Replacement**



DIMENSIONS



APPROVALS



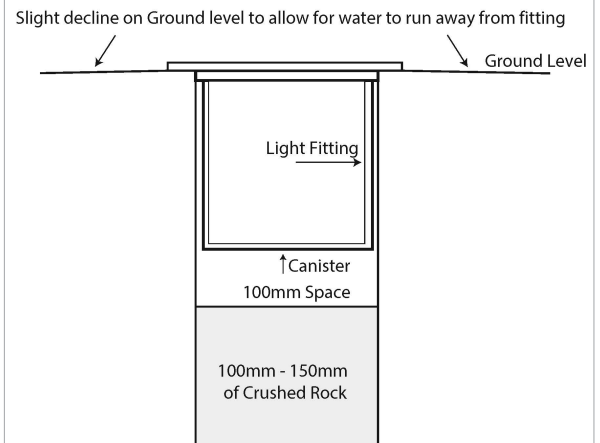
IP RATING



COLOUR TEMPERATURE



INSTALLATION WITH ADEQUATE DRAINAGE



OPTIONAL ACCESSORIES

HV1843-FSH
 SCREW DOWN FACE



Product Ordering

IMAGE	PART NUMBER	COLOURTEMP	LUMENS	INPUT	BEAM ANGLE	INCLUDED LED
	HV1843C	5500K	1200lm	12v DC	60°	Built in 12w LED
	HV1843W	3000K	960lm	12v DC	60°	Built in 12w LED

12v DC models must be used with suitable 12v DC LED Driver

* Lumen output measured at source

** See Warranty Terms and Conditions for more information

For more information contact Havit Lighting

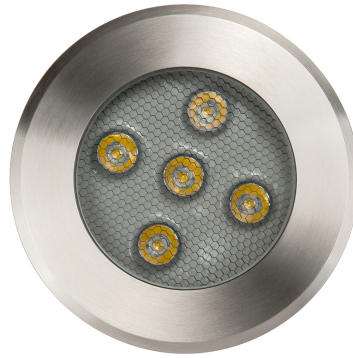
ADDRESS:
 143 Beauchamp Road
 Matraville NSW 2036
 Australia

Tel: 02 9381 8300
 Fax: 02 9666 8881
 Email: sales@havit.com.au
 web: www.havit.com.au

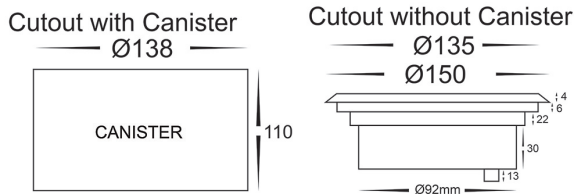
316 Stainless Steel Round Inground Lights

PRODUCT SPECIFICATIONS

Name: Split
Material: 316 Stainless Steel
Colour: Stainless Steel
IP Rating: IP67
IK Rating: IK10
Trafficable: 1000kg
Lamp Base: Built in LED
CRI: ≥80
Cable Length: 300mm
Wiring: Parallel
Dimmable: No
Warranty: 2 Years Replacement**



DIMENSIONS



APPROVALS



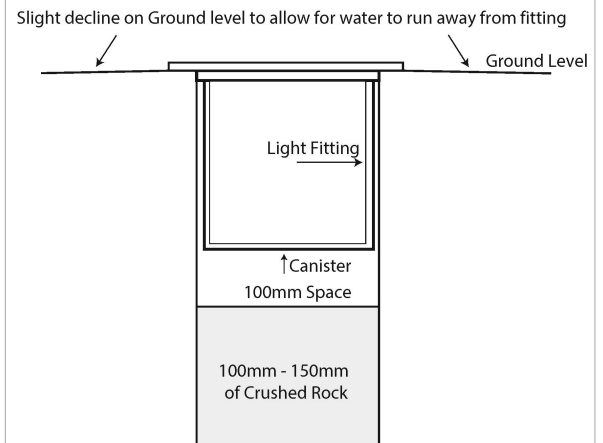
IP RATING



COLOUR TEMPERATURE



INSTALLATION WITH ADEQUATE DRAINAGE



OPTIONAL ACCESSORIES

HV1842-FSH
 SCREW DOWN FACE



Product Ordering

IMAGE	PART NUMBER	COLOURTEMP	LUMENS	INPUT	BEAM ANGLE	INCLUDED LED
	HV1842C	5500K	450lm	12v DC	60°	Built in 5w LED
	HV1842W	3000K	400lm	12v DC	60°	Built in 5w LED

12v DC models must be used with suitable 12v DC LED Driver

* Lumen output measured at source

** See Warranty Terms and Conditions for more information

For more information contact Havit Lighting

ADDRESS:
 143 Beauchamp Road
 Matraville NSW 2036
 Australia

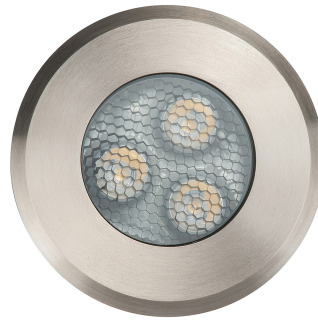
Tel: 02 9381 8300
 Fax: 02 9666 8881
 Email: sales@havit.com.au
 web: www.havit.com.au

316 Stainless Steel Round Inground Lights

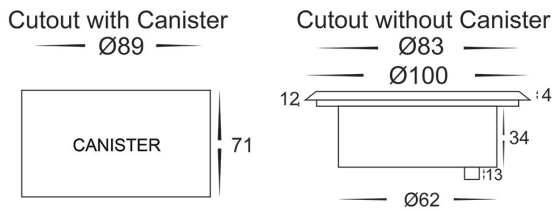


PRODUCT SPECIFICATIONS

Name: Split
Material: 316 Stainless Steel
Colour: Stainless Steel
IP Rating: IP67
IK Rating: IK10
Trafficable: 1000kg
Lamp Base: Built in LED
CRI: ≥80
Cable Length: 300mm
Wiring: Parallel
Dimmable: No
Warranty: 2 Years Replacement**



DIMENSIONS



OPTIONAL ACCESSORIES

HV1841-FSH
 SCREW DOWN FACE



APPROVALS



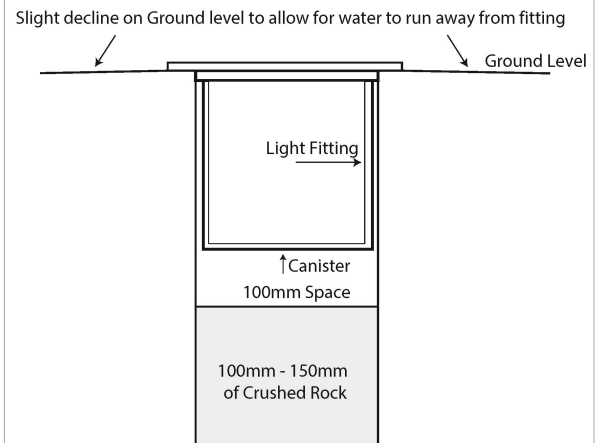
IP RATING



COLOUR TEMPERATURE



INSTALLATION WITH ADEQUATE DRAINAGE



Product Ordering

IMAGE	PART NUMBER	COLOURTEMP	LUMENS	INPUT	BEAM ANGLE	INCLUDED LED
	HV1841C	5500K	300lm	12v DC	60°	Built in 3w LED
	HV1841W	3000K	240lm	12v DC	60°	Built in 3w LED

12v DC models must be used with suitable 12v DC LED Driver

* Lumen output measured at source

** See Warranty Terms and Conditions for more information

For more information contact Havit Lighting

ADDRESS:
 143 Beauchamp Road
 Matraville NSW 2036
 Australia

Tel: 02 9381 8300
 Fax: 02 9666 8881
 Email: sales@havit.com.au
 web: www.havit.com.au