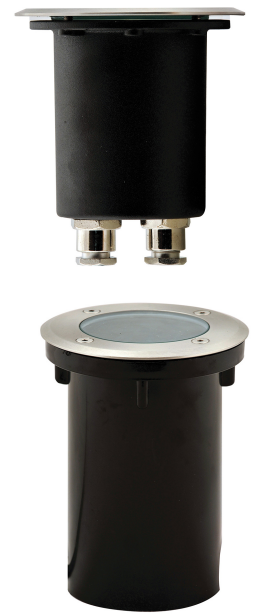


316 Stainless Steel Round Inground Lights



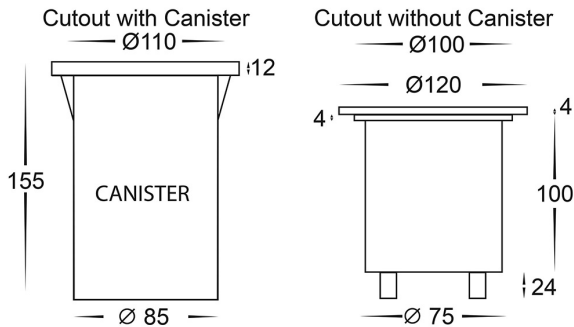
PRODUCT SPECIFICATIONS

Name: Metro Round
Material: 316 Stainless Steel + aluminium
Colour: Stainless Steel
IP Rating: IP65
IK Rating: IK08
Trafficable: 600kg
Lamp Base: GU10 or MR16
CRI: ≥80
Cable Length: 300mm
Wiring: Parallel
Dimmable: No
Warranty: 2 Years Replacement**



Compatible with
Tri-Colour 9in1
3w, 5w, 7w
12v, 24v or 240v LED Globe

DIMENSIONS



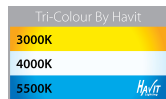
APPROVALS



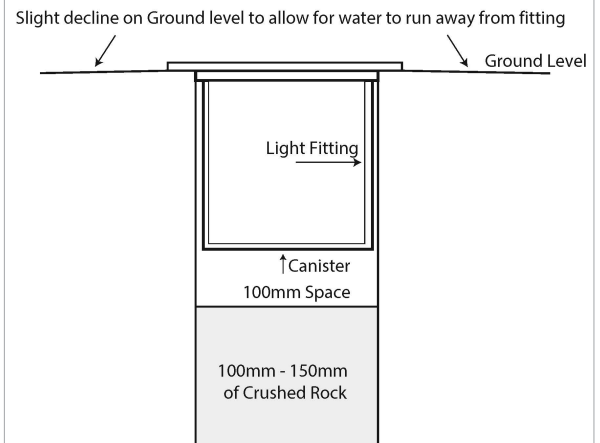
IP RATING



COLOUR TEMPERATURE



INSTALLATION WITH ADEQUATE DRAINAGE



Product Ordering

IMAGE	PART NUMBER	COLOURTEMP	LUMENS	INPUT	BEAM ANGLE	INCLUDED LED
	HV1801T	3000K	270lm	12v DC	120°	Tri-Colour 5w MR16 LED
		4000K	285lm			
		5500K	300lm			
	HV1806T	3000K	270lm	240V AC	120°	Tri-Colour 5w GU10 LED
		4000K	285lm			
		5500K	300lm			

12v DC models must be used with suitable 12v DC LED Driver

* Lumen output measured at source

** See Warranty Terms and Conditions for more information

For more information contact Havit Lighting

ADDRESS:
 143 Beauchamp Road
 Matraville NSW 2036
 Australia

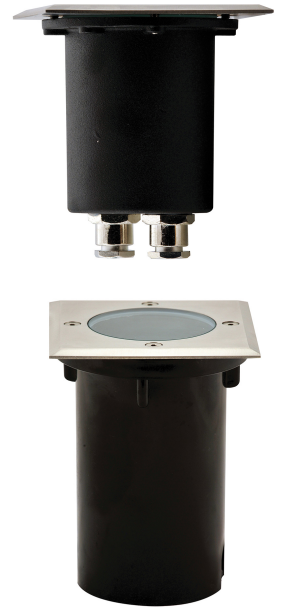
Tel: 02 9381 8300
 Fax: 02 9666 8881
 Email: sales@havit.com.au
 web: www.havit.com.au

316 Stainless Steel Square Inground Lights



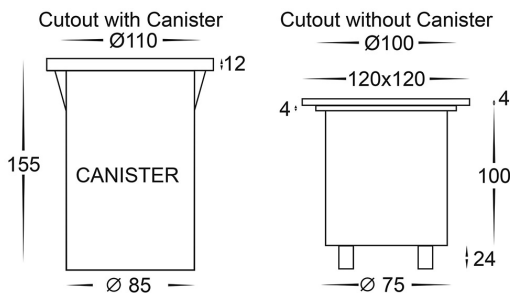
PRODUCT SPECIFICATIONS

Name: Metro Square
Material: 316 Stainless Steel + aluminium
Colour: Stainless Steel
IP Rating: IP65
IK Rating: IK08
Trafficable: 600kg
Lamp Base: GU10 or MR16
CRI: ≥80
Cable Length: 300mm
Wiring: Parallel
Dimmable: No
Warranty: 2 Years Replacement**



Compatible with Tri-Colour 9in1 3w, 5w, 7w 12v,24v or 240v LED Globe

DIMENSIONS



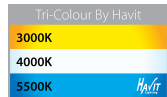
APPROVALS



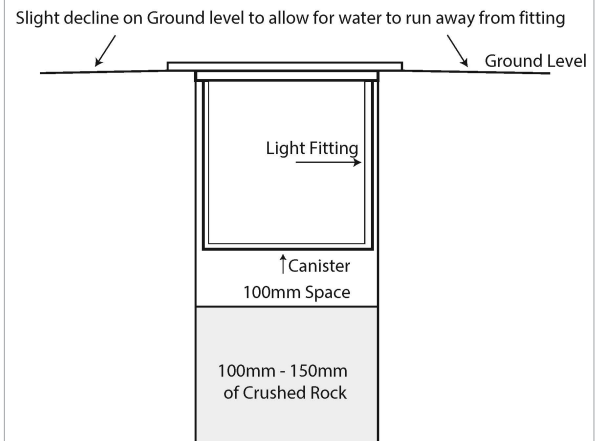
IP RATING



COLOUR TEMPERATURE



INSTALLATION WITH ADEQUATE DRAINAGE



Product Ordering

IMAGE	PART NUMBER	COLOURTEMP	LUMENS	INPUT	BEAM ANGLE	INCLUDED LED
	HV1701T	3000K 4000K 5500K	270lm 285lm 300lm	12v DC	120°	Tri-Colour 5w MR16 LED
	HV1706T	3000K 4000K 5500K	270lm 285lm 300lm	240V AC	120°	Tri-Colour 5w GU10 LED

12v DC models must be used with suitable 12v DC LED Driver

* Lumen output measured at source

** See Warranty Terms and Conditions for more information

For more information contact Havit Lighting

ADDRESS:
143 Beauchamp Road
Matraville NSW 2036
Australia

Tel: 02 9381 8300
Fax: 02 9666 8881
Email: sales@havit.com.au
web: www.havit.com.au