



General Information

| | |
|-----------------|-----------------------------|
| Material number | 204762 |
| Type | wall/ceiling light |
| Product segment | Indoor |
| Theme | sonstige / nicht zuordenbar |

Dimensions

| | |
|------------------------|-----|
| Article Height (in mm) | 36 |
| Article Width (in mm) | 80 |
| Article Length (in mm) | 590 |
| Net Weight (in kg) | 0.5 |

Material & Colour

| | |
|----------------------|-----------|
| Enclosure Material | aluminium |
| Enclosure Colour | white |
| Glass/Shade Material | plastic |
| Glass/Shade Colour | white |

Functionality

| | |
|-------------|--|
| Switch Type | without switch |
| Function | LED not replaceable change of the Kelvin on the product |
| Battery | No |

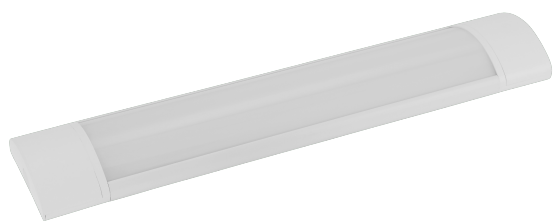
Technical Information

| | |
|-------------------|------|
| Protection Degree | IP40 |
| Protection Class | 1 |
| Dimmable | No |
| max. Wattage (1) | 20W |

Illuminant 1

| | |
|-----------------------------------|---------------------|
| Socket Type (1) | LED |
| Illuminant Type (1) | LED |
| Illuminant incl. (1) | Inclusive |
| Lumen Complete | 2000 |
| Kelvin Complete | 3000K, 4000K, 5000K |
| Light colour Complete | TRICOLOUR |
| Nominal Lifetime (in h) | 25,000 |
| Switching Cycles | 15000 |
| Dimmable | No |
| Rated Lamp Power (0,1W precision) | 20 |
| Colour Tolerance (LED, SDCM) | <6 |





General Information

| | |
|-----------------|-----------------------------|
| Material number | 204764 |
| Type | wall/ceiling light |
| Product segment | Indoor |
| Theme | sonstige / nicht zuordenbar |

Dimensions

| | |
|------------------------|-----|
| Article Height (in mm) | 42 |
| Article Width (in mm) | 120 |
| Article Length (in mm) | 590 |
| Net Weight (in kg) | 0.8 |

Material & Colour

| | |
|----------------------|-----------|
| Enclosure Material | aluminium |
| Enclosure Colour | white |
| Glass/Shade Material | plastic |
| Glass/Shade Colour | white |

Functionality

| | |
|-------------|--|
| Switch Type | without switch |
| Function | LED not replaceable change of the Kelvin on the product |
| Battery | No |

Technical Information

| | |
|-------------------|------|
| Protection Degree | IP40 |
| Protection Class | 1 |
| Dimmable | No |
| max. Wattage (1) | 30W |

Illuminant 1

| | |
|-----------------------------------|---------------------|
| Socket Type (1) | LED |
| Illuminant Type (1) | LED |
| Illuminant incl. (1) | Inclusive |
| Lumen Complete | 3000 |
| Kelvin Complete | 3000K, 4000K, 5000K |
| Light colour Complete | TRICOLOUR |
| Nominal Lifetime (in h) | 25,000 |
| Switching Cycles | 15000 |
| Dimmable | No |
| Rated Lamp Power (0,1W precision) | 30 |
| Colour Tolerance (LED, SDCM) | <6 |

