

BRICK SERIES

LED Exterior Recessed Wall Lights

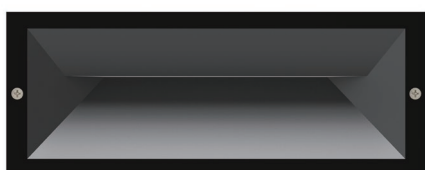


PRODUCT FEATURES

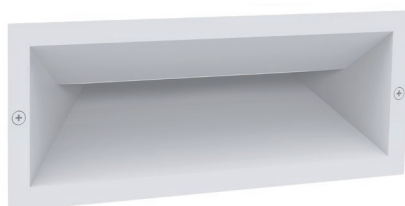
- Exterior LED recessed wall lights
- Input voltage range: 100-240V AC 50/60Hz
- Internal constant current driver included
- Housing & heatsink: aluminium
- Diffuser: PC
- Sleeve: PC
- LED chips: 12pcs 3030
- Beam angle: please see below
- Ambient temp: -20 to 50°C
- Not suitable for dimming
- Suitable for 2 way switching
- Suitable for use with PIR or Microwave sensors



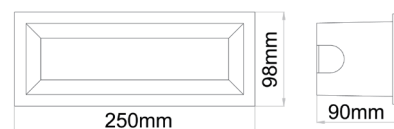
Exterior Lighting



▲ BRICK0001



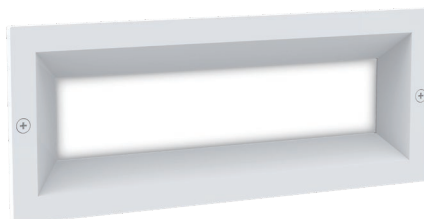
▲ BRICK0002



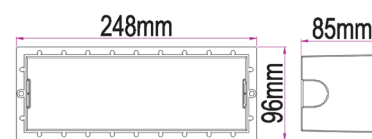
Line Drawing



▲ BRICK0003



▲ BRICK0004



Sleeve

CODE	DESCRIPTION	KELVIN (K)	LUMENS (LM)	WATT (W)	CRI	BEAM	LENGTH (mm)	WIDTH (mm)	DEPTH (mm)	CARTON QTY
BRICK0001	WALL LED 240V RECD Dark Grey Rect	3000	279	13	>80	60°	250	98	90	1/8
BRICK0002	WALL LED 240V RECD WH RECT	3000	279	13	>80	60°	250	98	90	1/8
BRICK0003	WALL LED 240V RECD Dark Grey Rect Frosted Diffused	3000	576.15	13	>80	100°	250	98	90	1/8
BRICK0004	WALL LED 240V RECD WH RECT Frosted Diffused	3000	576.15	13	>80	100°	250	98	90	1/8