

AT4120/PIR

AT4120/PIR/WHT

Wall mount PIR sensor - IP65 - 12m



ORDERING INFORMATION

Order code	13950
Description	PIR sensor 12m- wall mount- IP65- white
Item Code	AT4120/PIR/WHT

MECHANICAL

Adjustability	Adjustable
Body Material	Polycarbonate
Fitting Colour	White
Installation Type	Wall mount
IP Rating	IP65

ELECTRICAL

Electrical Rating	Class II
Input Frequency	50 Hz
Input voltage	230V~
Working Temp Range	-20 to 40 °C

SENSOR (S SUFFIX)

Adjustable Detection Area / Sensitivity	No
Adjustable Hold Time	Yes
Adjustable Standby Level	No
Adjustable Standby Period	No
Corridor Function	No
Dawn Reset	No
Detection Range	12 m
Detection Angle	180

Dusk Mode	Yes
Lux Adjustment	Yes
Lux Range	<3 to 2000 lx
Manual Override	No
Sensor Type	PIR
Switched Output	Yes
Switched Output Rating	1200 W
Time Delay	10s to 15m

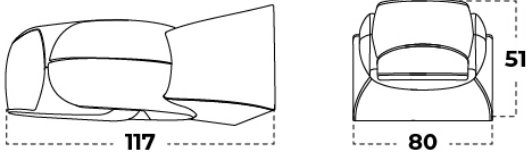
COMPLIANCE

Standards	AS/NZS 60669.1 AS/NZS 60669.2.1 EN/IEC 55015 IEC 61000.3 IEC 61000.4
-----------	--

DIMENSIONS

Product Height	51 mm
Product Length	117 mm
Product Width	80 mm

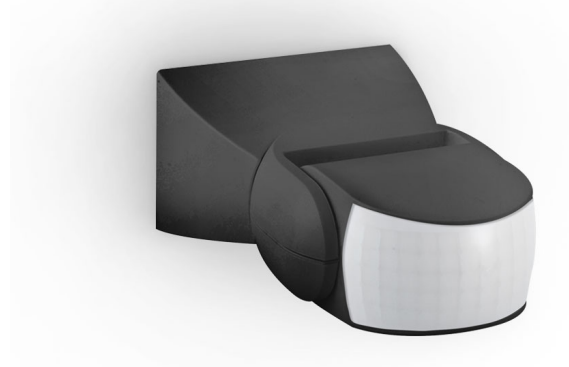
LINE DRAWINGS



AT4120/PIR

AT4120/PIR/BLK

Wall mount PIR sensor - IP65 - 12m



ORDERING INFORMATION

Order code	13951
Description	PIR sensor 12m- wall mount- IP65- black
Item Code	AT4120/PIR/BLK

MECHANICAL

Adjustability	Adjustable
Body Material	Polycarbonate
Fitting Colour	Black
Installation Type	Wall mount
IP Rating	IP65

ELECTRICAL

Electrical Rating	Class II
Input Frequency	50 Hz
Input voltage	230V~
Working Temp Range	-20 to 40 °C

SENSOR (S SUFFIX)

Adjustable Detection Area / Sensitivity	No
Adjustable Hold Time	Yes
Adjustable Standby Level	No
Adjustable Standby Period	No
Corridor Function	No
Dawn Reset	No
Detection Range	12 m
Detection Angle	180

Dusk Mode	Yes
Lux Adjustment	Yes
Lux Range	<3 to 2000 lx
Manual Override	No
Sensor Type	PIR
Switched Output	Yes
Switched Output Rating	1200 W
Time Delay	10s to 15m

COMPLIANCE

Standards	AS/NZS 60669.1 AS/NZS 60669.2.1 EN/IEC 55015 IEC 61000.3 IEC 61000.4
-----------	--

DIMENSIONS

Product Height	51 mm
Product Length	117 mm
Product Width	80 mm

LINE DRAWINGS

