



Outback Pioneer Highbanker assembly

Components:

- 1 x Sluice Channel
- 1 x Hopper
- 1 x Hopper water gate
- 2 x Hopper Height Arm
- 1 x hopper front detachable spray bar panel
- 1 x Perforated steel plate classifier
- 1 x Expanded Sheet hopper kit
 - 1 x mesh panel
 - 1 x Backed miners moss panel
- 1 x Highbanker Leg kit
 - 4 x Stainless steel leg brackets
 - 4 x 12mm solid bar legs
- 1 x Dream mat
- 1 x Sluice Mat Clamp
- 1 x Stainless rod for Arm support

Bolt Kit Contents

- 1 x **HSP** Hopper Spray panel— 3 x m6x16 stainless hex button head bolt, 3 x m6 flange nut, 3 x m6 nylon washer
- 1 x **WG** Water Gate — 4 x m6x16 stainless hex button head bolt, 4 x m6 flange nut, 4 x m6 nylon washer
- 1 x **MB** Moss Bolts— 2 x m8x25 stainless hex button head bolt, 2 x m8 nylon washer, 2 x Stainless m8 Wingnut
- 1 x **PS** Perforated Sheet — 2 x m8x16 stainless hex button head bolt, 2 x nylon m8 washer, 2 x m8 flange nut
- 1 x **HA** – Height adjustment - 2 x m6 stainless hex button head bolt, 2 x m6 Stainless washer, 2 x m6 nylon washer, 2 x m6 flange nut
- 1 x **LK1** - Leg kit 1 – 8 x m8x16 stainless hex button head bolt, 8 x m8 flange nut, 8 x m8 nylon washer
- 1 x **LK2** - Leg kit 2 – 4 x m8 Zinc thumb screw (leg height adjustment)
- 1 x **G** – Grommet – 2 x 5.57x7.94 mm rubber grommets
- 1 x **HH** - Hopper Hinge – 2 x m8x16 stainless hex button head bolt, 4 x m8 nylon washer, 2 x m8 flange nut
- 1 x **CB** – Clamp Bolt – 1 x m6x16 stainless hex button head bolt, 1 x m6 nylon washer, 1 x stainless m6 wingnut



First locate HSP bolt kit and hopper front detachable spray bar panel and fit all three bolts as below.

Then locate Hopper water gate panel and Hopper and lay hopper upside down and place hopper water gate with large opening towards the rear as seen below.



Next locate **WG** Bolt Kit and feed bolts from inside with thread protruding toward yourself, apply nylon washer before fitting flange nut to spread pressure on the adjustment slide. The slide allows you to move the gate forward or backward to suit higher water conditions when required.



Next we want to locate the expanded mesh hopper kit and **MB** bolt kit. Find a surface that is safe to drill into and Lay Miners moss in the hopper and fit mesh on top as below.



Then take an 8mm Drill bit and drill two holes to suit the diamond mesh pattern. Remove the mat and by folding at the drill hole trim a section here with your scissors to open the hole.



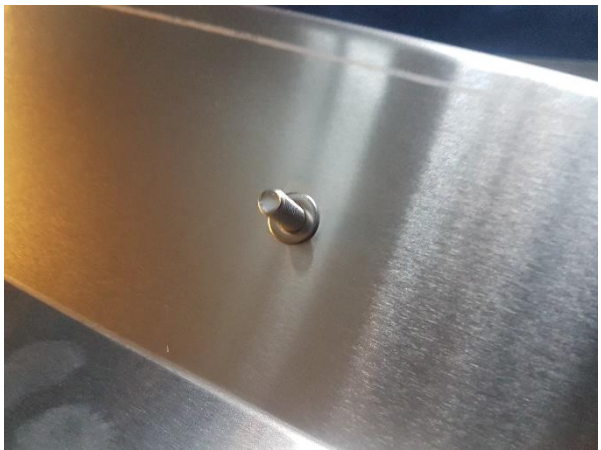
Don't fit bolts to the mesh just yet, put the **MB** bolt kit to the side and locate the perforated sheet and **PS** bolt kit. Align the perforated sheet to the lower holes in the hopper and fit nut as shown below.





Now you can fit miners moss and mesh to place and secure with **MB** bolt kit with wing nuts under hopper.

Locate **HA** Bolt kit and Hopper Height Arm, fit m6 bolt from inside hopper and fit stainless washer to outside as below. This allows the arms to move freely with torque on the flange nut without biting into the aluminium.



Now fit arm to bolt with as below with nylon washer between flange nut and arm.



Next locate the **G** kit and fit the two rubber grommets into the sluice channel and glide the stainless rod into the grommets. If they are a bit sticky there is no harm in wetting the rod.

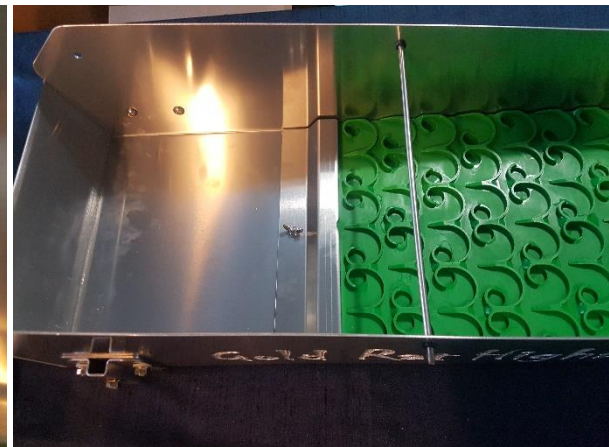
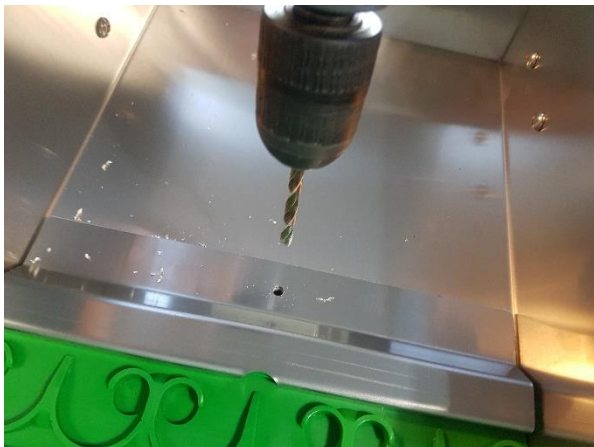


Now we can use the rod as a support for the hopper whilst when we fit the rear hopper mounts.

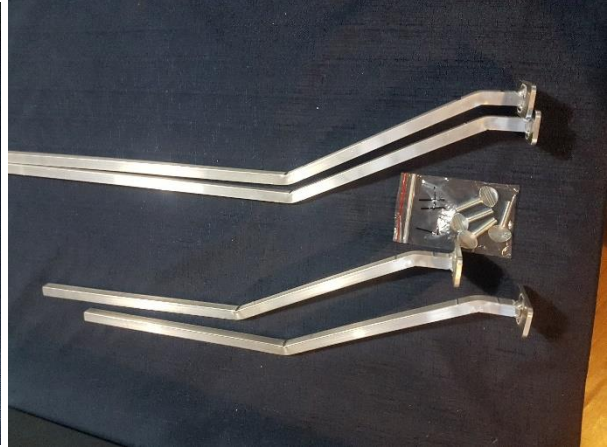
Locate your dream mat and dream mat clamp and bolt kit **CB**. Align mat in sluice fit clamp so as the mat sits at the bottom of your sluice. Mark the clamp hole with a marker and drill with m6 drill bit if required.



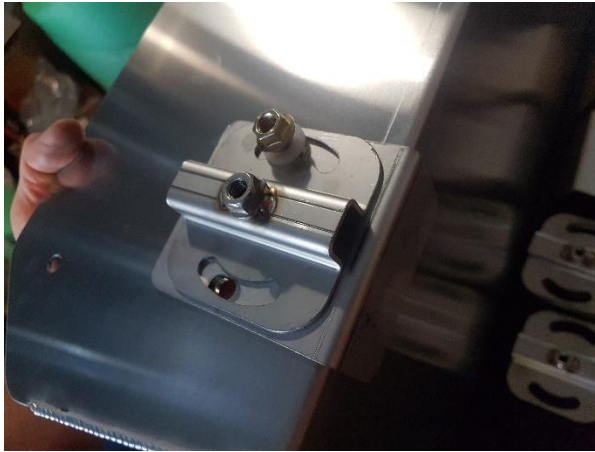
Fit **CB** kit to clamp as shown below.



Next we will fit the leg mounts, locate leg kit and **LK1** and **LK2** kits, unwrap your leg kit components and lay them out.



Turn your sluice channel on its side and place a support bracket and height and pitch bracket as per image below. Secure the mount by using 1 x m8 button head from inside sluice, use nylon washer to support angle guides before fitting flange nut.

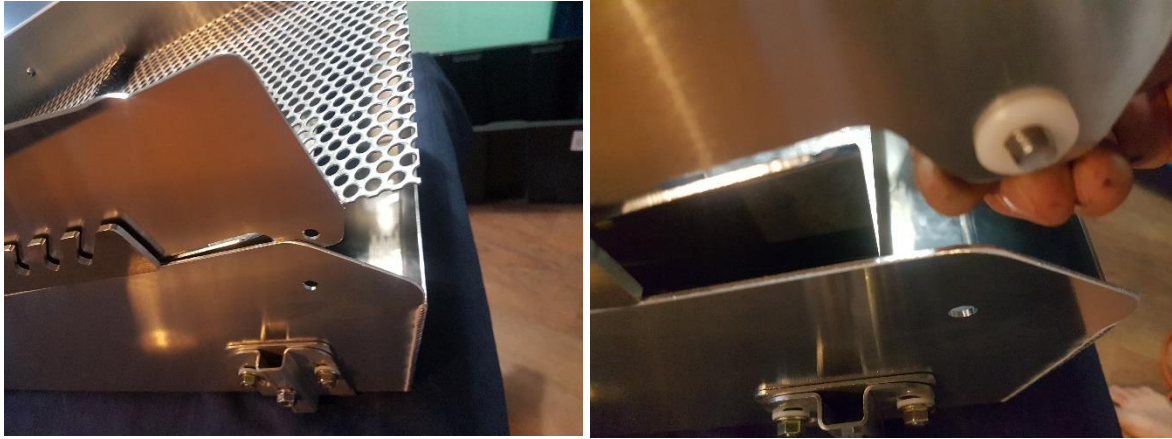


Repeat for all four brackets. Now lay your sluice flat with the rear wall facing you.

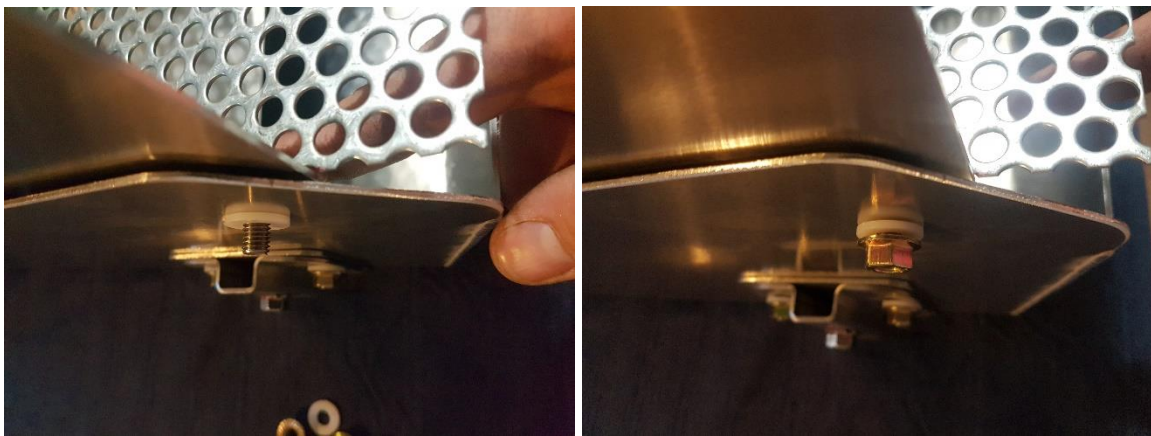
At this point it is best to move the hopper height arms swung forward so they don't get in the way when fitting the rear mount to your sluice.



Align the hopper mount point as best you can with the sluice mount point at the rear as seen below. Next locate **HH** Kit and fit a hex bolt from inside hopper facing out, use nylon between metal surfaces.



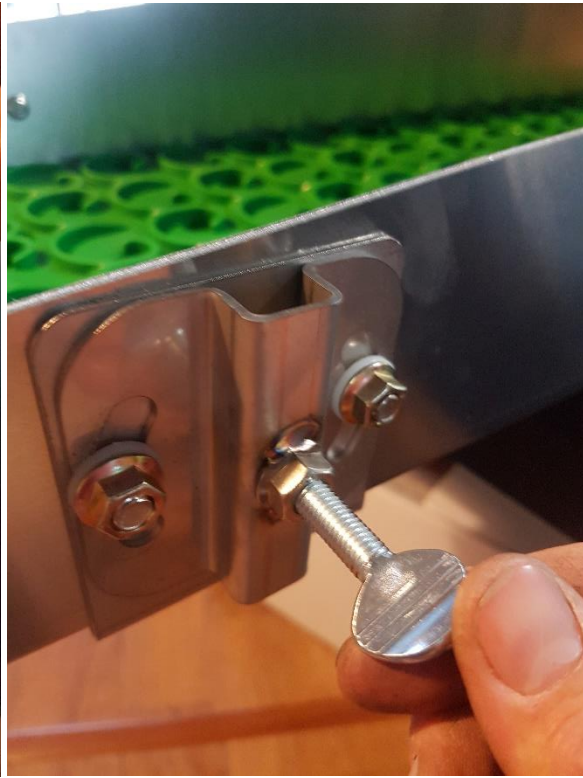
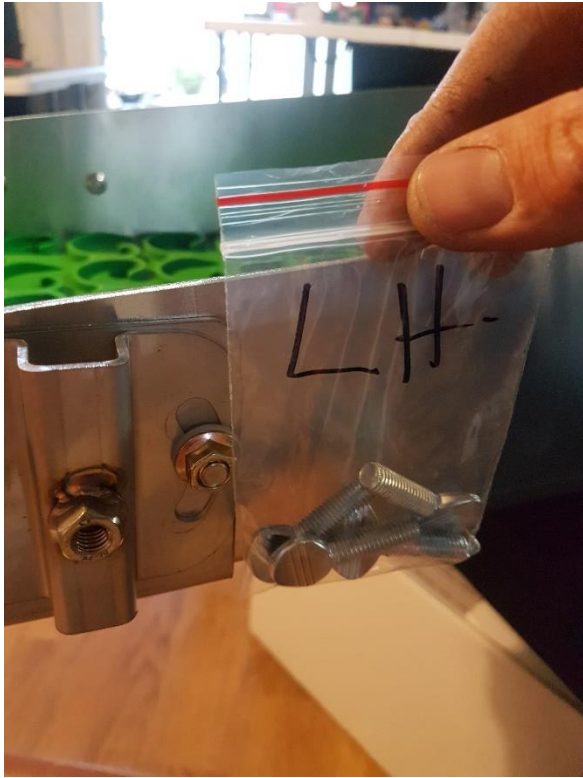
Carefully guide the first bolt into one side and fit nylon washer between flange nut and metal. Do not tighten this nut all the way, leaving this loose allows some play when fitting the second mount.



Insert the bolt the same as with the first side and rest the thread on the sluice to fit the nylon washer. Fit second nylon washer and tighten both nuts. As the hinge is supported by nylon you can torque these nuts up quite hard without effecting the metal.



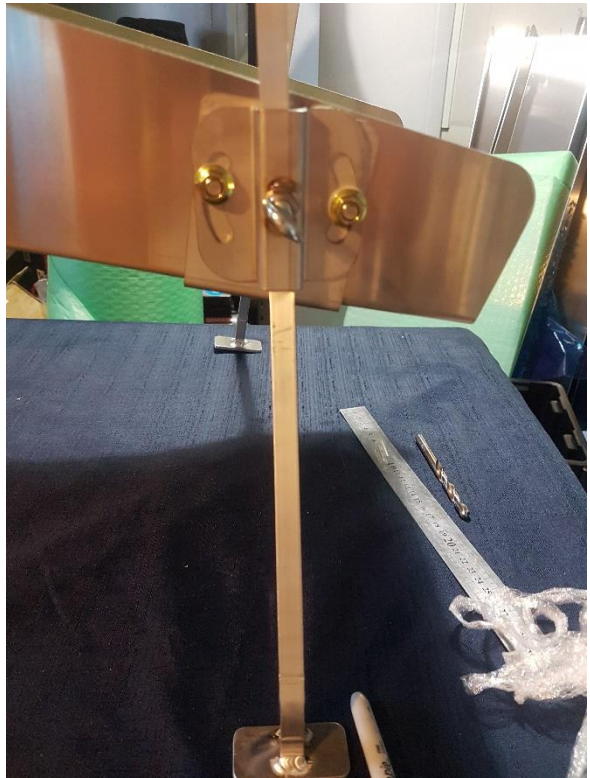
Now we can fit the legs. Place the front of the sluice hanging over the bench and fit **LK2** bolts to leg brackets.



Locate short legs and fit by feeding from under bracket with legs facing outward for wide footprint. Locate long legs and repeat and fit to rear brackets tightening **LK2** thumb screws to secure. When fitting front legs to start with push them all the way up to the bend as shown below. With the rear legs feed so 2-3 inches of the leg is above the sluice channel as per image below. This will give you roughly 8.5 degrees of fall.



Now you are able to stand your highbanker up and adjust the angle of your legs to insure the legs are flat on the floor.



Congratulations your new Outback Pioneer Series Highbanker is assembled and ready for action



For easy transport swing the arms to the rear as seen below and drop hopper onto support bar, remove legs only place inside hopper and you're good to go.

If you have any trouble with assembly, please feel free to contact your retailer or Gold Rat Highbankers on 07 3284 0165

