

# IS IT compostable?



**Fruits and vegetables**  
**Coffee grounds (with filters)**

**Tea Bags**

**Eggshells, nutshells**

**Cardboard (uncoated, small pieces)**

**Leaves, weeds**

**Wood chips, sawdust**

**Fireplace ashes (natural woods only)**

**Gardening and canning waste**

**Bark, stems, stalks (small)**

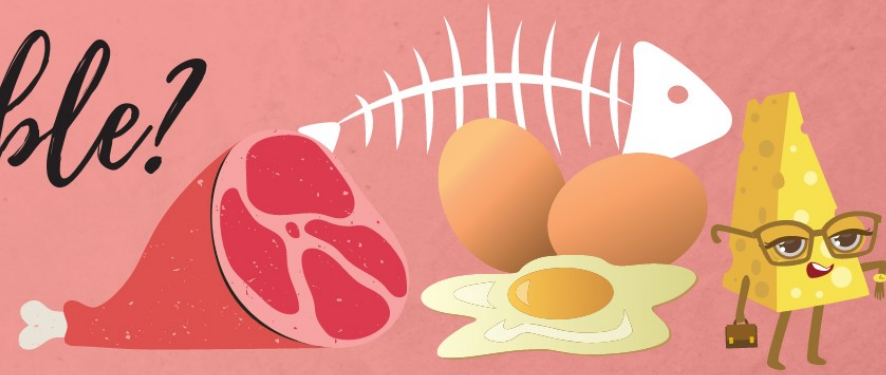
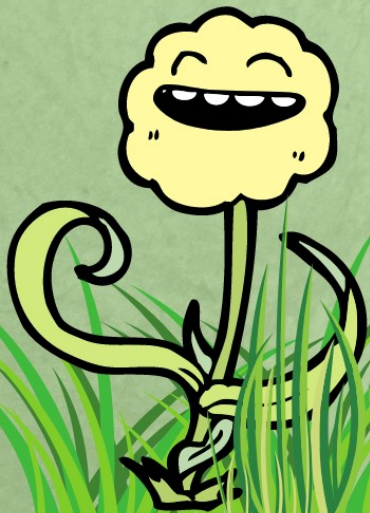
**Hair and fur**

**Newspaper (shredded)**

**Paper (uncoated, small pieces)**

**Houseplants**

**Manure**



**Meats or bones**

**Dairy Products**

**Large branches**

**Synthetic products, plastics**

**Pet wastes or litter**

**Black walnut tree leaves or twigs**

**Coal or charcoal ash**

**Eggs (shells are okay)**

**Diseased plants**

**Yard trimmings with chemical pesticides**

