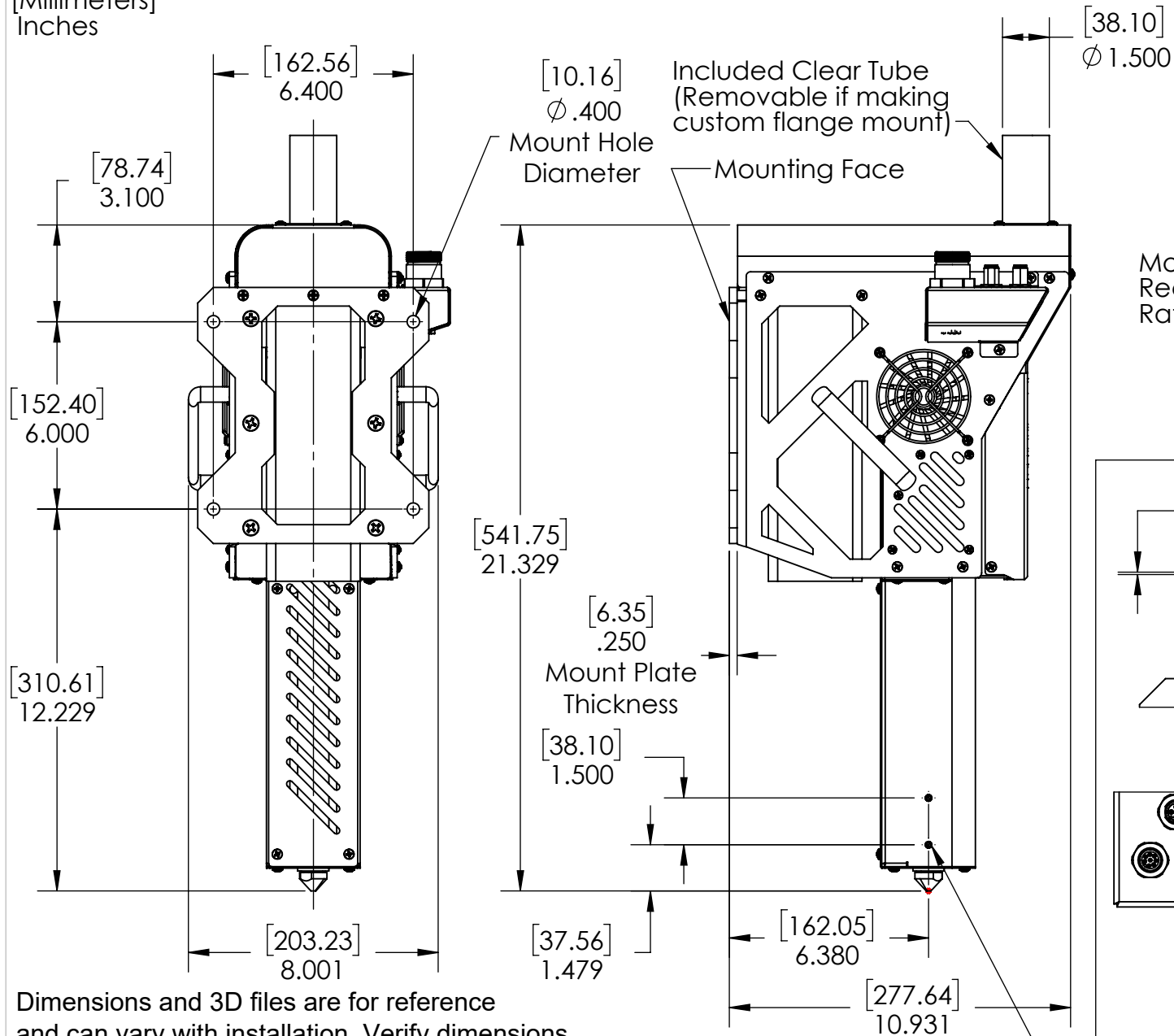


[Millimeters]
Inches



Dimensions and 3D files are for reference and can vary with installation. Verify dimensions after mounting before entering machine settings for your implementation.

Included Clear Tube
(Removable if making
custom flange mount)

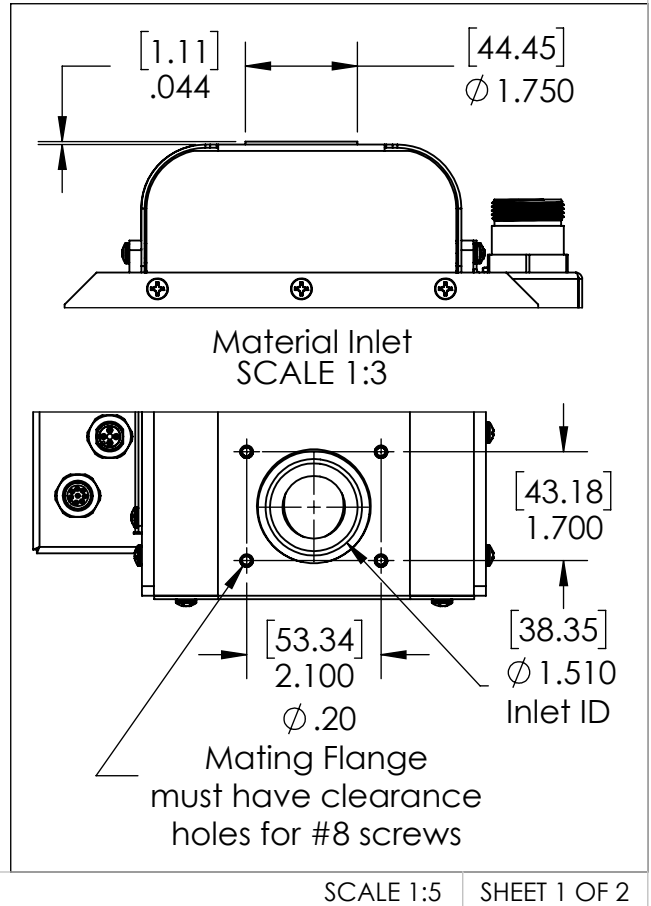
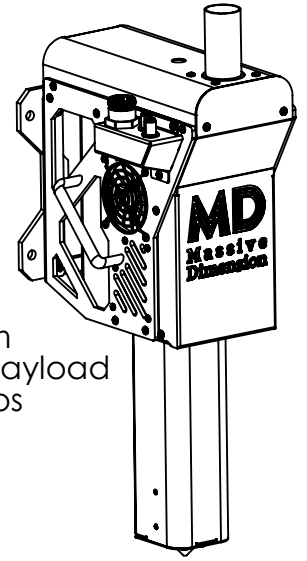
Mounting Face

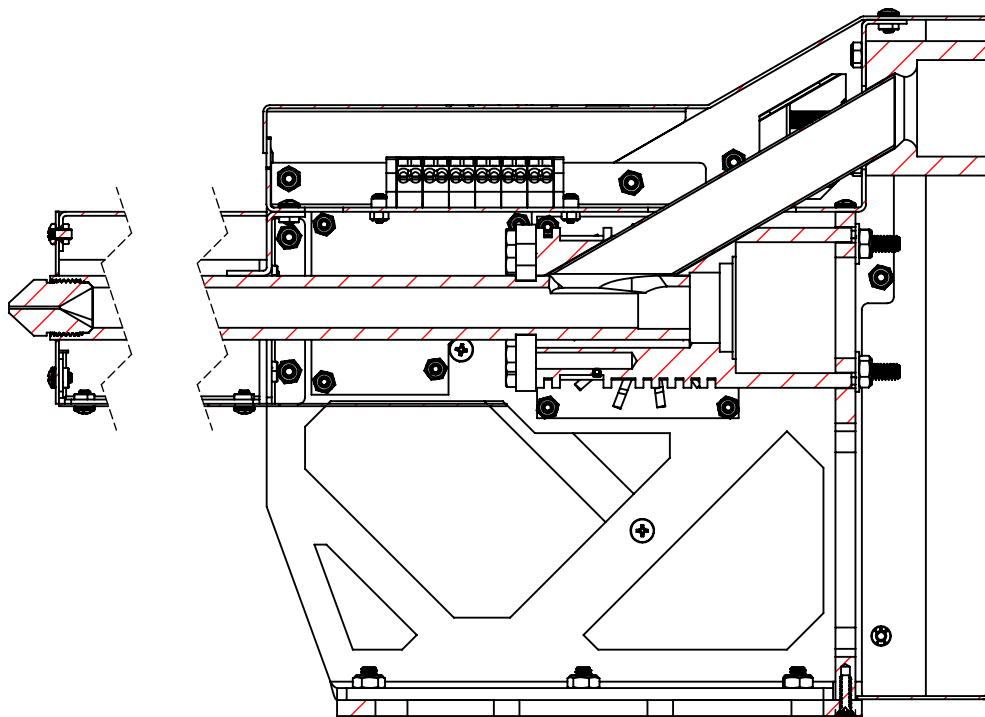
Mount Hole
Diameter

Mount Plate
Thickness

Accessory Mount Holes
#8-32 Thread
(Both Sides)

Movement System
Recommended Payload
Rating: [18kg] 40lbs

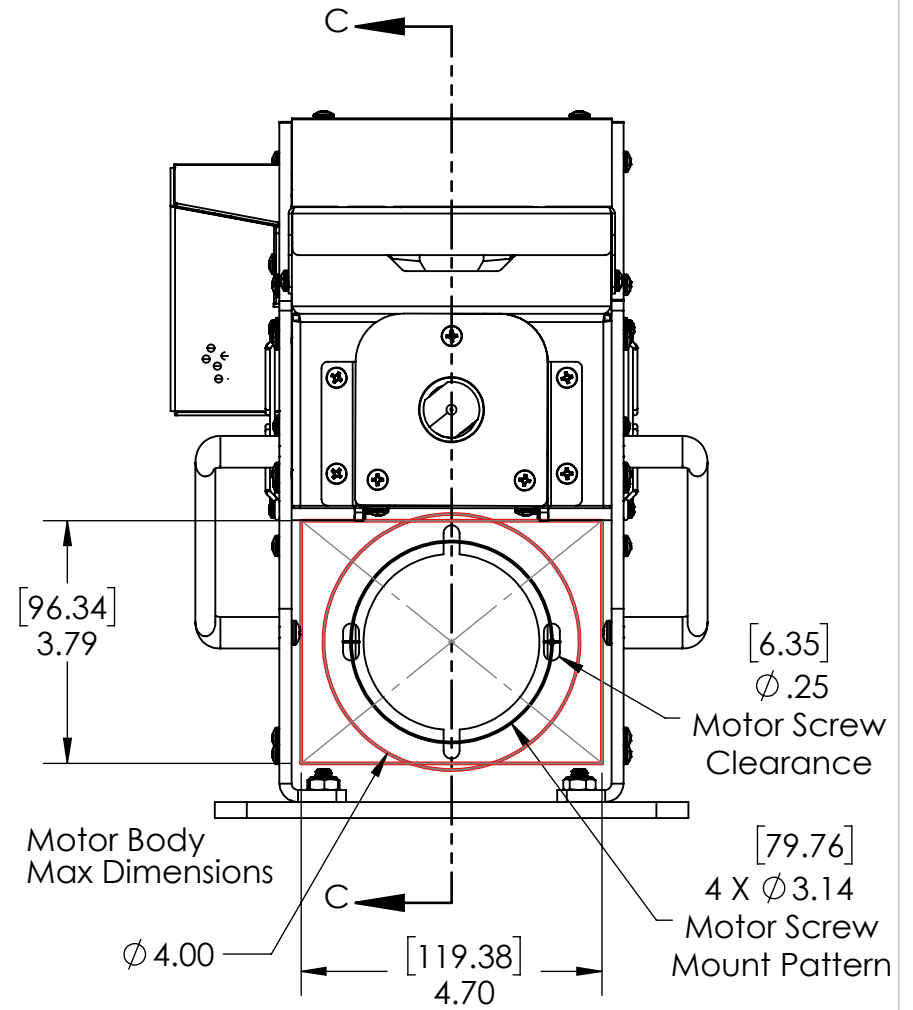




SECTION C-C

[7.94]
.31
Max Shoulder Height

[59.98]
2.36
Max Shaft Length



Drive Pulley Shaft Requirement:
22mm OD, 6mm Keyway