

AUGUST 2017 £4.99

THE WORLD OF INTERIORS

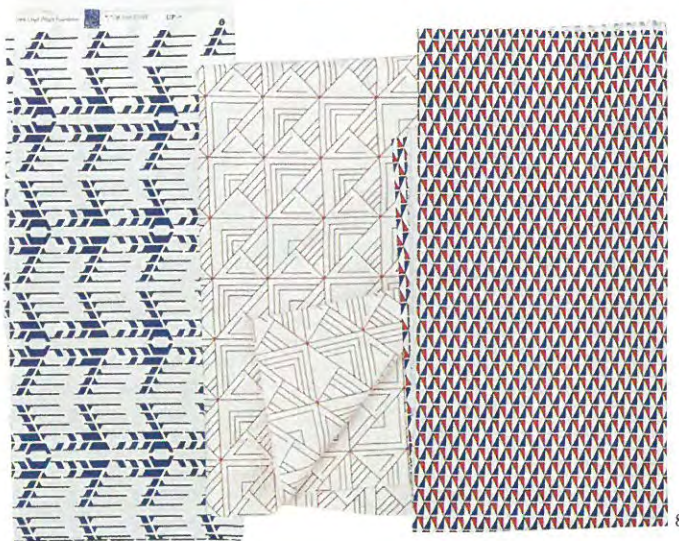




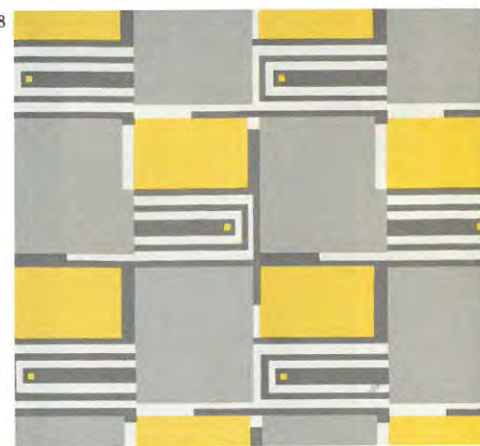
6 Boy, does Little Greene take its paint chart seriously. Grouped by muted and strong accent hues, 'Colours of England' features 170 contemporary and historical shades (identified and dated) in the form of 'flying chips' – these can be partially lifted off the cream card they're mounted on to help you compare colours. Shown: three of seven new hues, all from £21 for one litre of 'Absolute Matt' emulsion. Ring 020 7935 8844, or visit littlegreene.com.



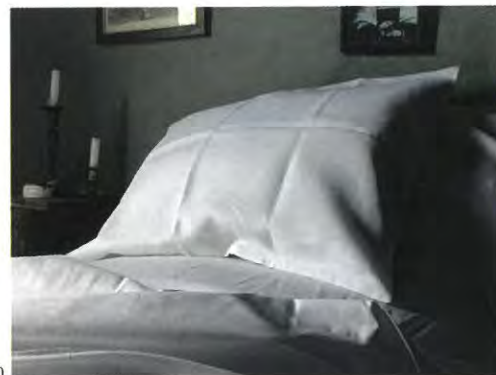
7 Having perceived a dearth of 'those unique pieces one needs to give a room personality' Bunny Williams established her own label. Two new, undeniably distinctive items are the gilded 'Arabella' mirror (\$3,200) and the hammered-metal 'Ellsworth' bed (from \$10,750). Ring 001 212 935 5930, or visit bunnywilliamshome.com.



8 Schumacher and Frank Lloyd Wright Foundation have joined forces to mark the 150th anniversary of the great American architect's birth. Not with cake and candles, but via a range of 12 fabrics derived from his sketches or inspired by his 'wildly successful' 1955 collection for the US textile house; from \$200 per yd. Ring 001 800 523 1200, or visit fshumacher.com.



9 These 41cm-high 'Antelope' and 'Ram' uplighters (£834 each) are worth locking horns over. Indeed, it might come to that as they were only made in limited numbers by Mathieu Chahlières for antique dealer James McWhirter. Ring 020 7351 5399, or visit jamesmcwhirter.com.



10 The Ireland-based Francis M. collaborates with local weavers to create exceptional linens for the bed, table and kitchen inspired by 'a time when purchases were considered... and cared for'. Prices from £85 for three tea towels. Ring 00 353 1 907 9218, or visit francis-m.com ■