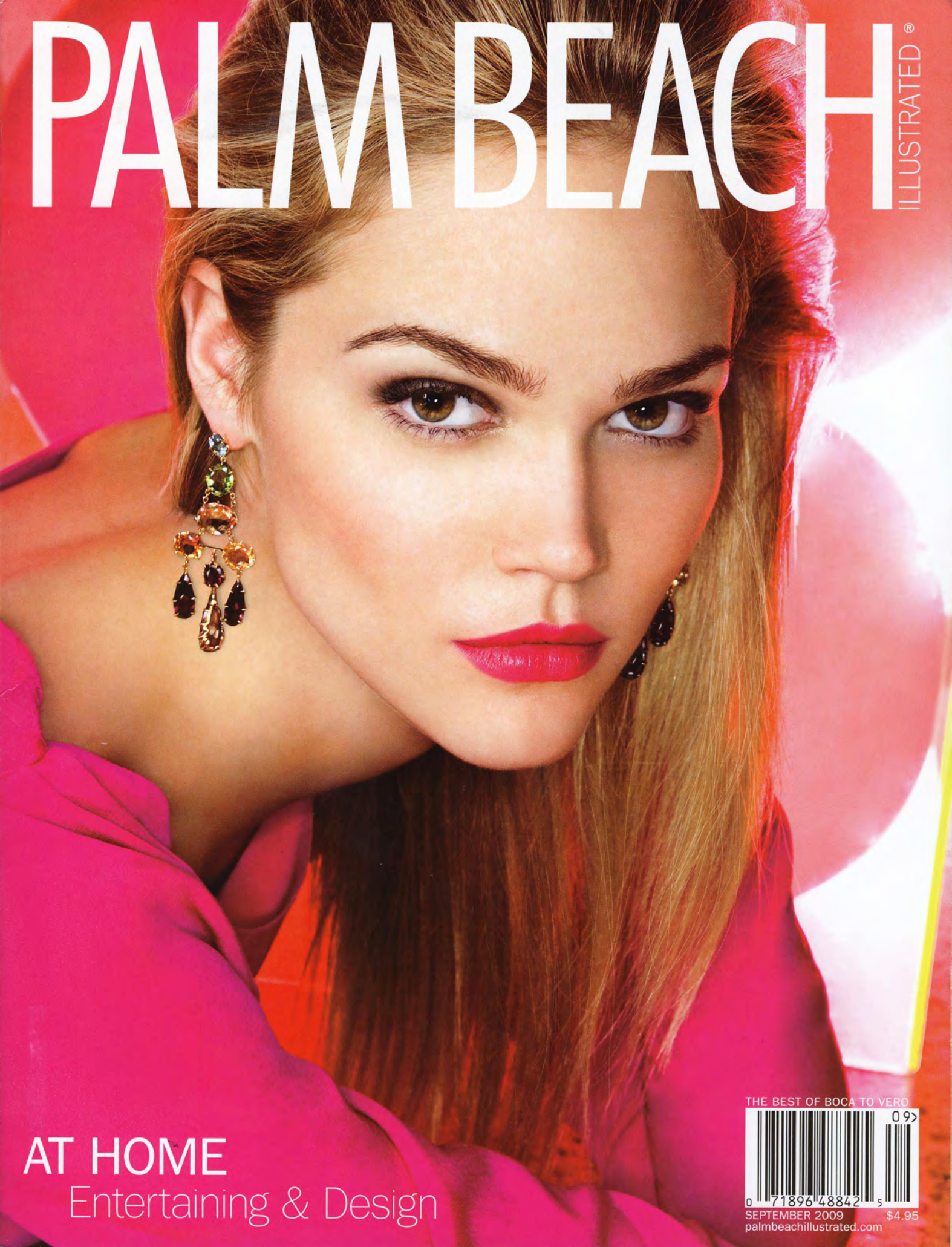


# PALM BEACH

ILLUSTRATED®



AT HOME

Entertaining & Design

THE BEST OF BOCA TO VERO



SEPTEMBER 2009 \$4.95

[palmbeachillustrated.com](http://palmbeachillustrated.com)



# INDIAN INFLUENCE



Left to right: detail of BeeLine Home's Arabesque throw; Kashmiri wallpaper in raspberry sorbet, Flavor Paper; Anichini pillows and fabrics.

## ● PASSAGE TO INDIA

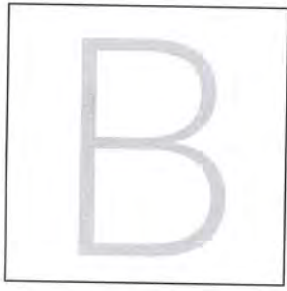
Health and well being lend themselves to a trend in Indian decor as much as style and texture do. According to Alex Dickson of Alex Dickson Interiors in West Palm Beach, the stress of the times is forcing people to look within to find peace of mind. "People are getting more exposed to [Indian culture]," he says. "With that I think comes exposure to the Eastern philosophies ... I think people are looking to that more to find calm and peace, and trying to bring that into their design and their interiors to create more of a sanctuary at home where they can be at peace and be relaxed."

Luxurious fabrics and textures are cornerstones of Indian decor. Throw pillows, as well as oversized floor pillows, are boldly colored, with detailed embroidery featuring paisleys, flowers and even beading. "[There are] a lot of reds, oranges and vibrant colors like those saffron [shades]," Dickson says. "Deep rich reds, purples, some pinks. ... very energetic colors. Color is big."



Above: wood mosaic pedestal table, Tonic Home  
Left: Almidi end table, Casamidy





# BOTANICALS



Left to right: Chelsea Botanicals dinner plate, Mottahedeh; Blossom bedding, Anali.

## ● GROWING ON YOU

Botanical prints and patterns never really go out of style, but today's designs are not just your grandmother's chintz pillows. Flowers and vines range from small and dainty to big and bold tropical prints. And luckily, these blooms will never fade, and they don't need watering.

Using different types of florals all together can get overwhelming, but you can pull them together with solids and even geometric patterns, like checks and stripes.

"I am a bit of a purist," says Allison Paladino, ASID, of Allison Paladino Interior Design in Palm Beach. "I tend to limit prints and choose complimentary, small patterns. I usually have two, depending on scale. My sofas are usually solids."

When mixing botanicals with other patterns, size does matter. "Scale is probably the biggest thing, so [the patterns] don't fight one another, but complement one another," Paladino says. She also encourages fun with color. "If you have a multicolored botanical print, a plaid or some sort of multicolored pattern is fabulous to complement it."



Left to right: Lily table lamp, Unica Home; English crewelwork pillows, BeeLine Home.