

House Beautiful

Decorating Secrets FOR A Happy Life

SUN-FILLED
ROOMS

DREAMY
OUTDOOR LIVING

EASY, PRETTY
FLOWERS

THE EXPERTS

NEXT WAVE

A BEDROOM RETREAT

When Lane moved into her TriBeCa apartment, her first order of business was to create a soothing, comfortable space where she could unwind. The toile-like Claremont sham fabric served as her jumping-off point. "I'll often fall for a printed textile," she says, "then use it to help define the rest of the room." A bolster in a Claremont animal print is trimmed in Samuel & Sons fringe. Matchstick blinds and T.J. Maxx curtains frame the custom upholstered headboard. The bed is dressed in Matouk linens. Lane scored the wicker elephant table on eBay, and the settee has been with her since she was a girl. "My bedroom is my sanctuary," she says.



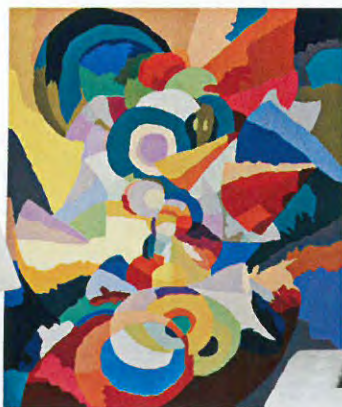
FLOOR-LENGTH LINEN SKIRTS ON SIDE TABLES CONCEAL STORAGE AND ADD A TOUCH OF SOFTNESS.

THE PAIR OF ALABASTER-AND-BRASS LAMPS WAS A FLEA-MARKET FIND.

SOME OF LANE'S FAVORITE THINGS



< FAUX-BOIS LAMP
"This clay piece makes me smile. I love its whimsy and the coppery glaze." christopherspitzmiller.com



< ABSTRACT RUG
"The combo of the traditional needlepoint method and the eye-popping colors and shapes makes me do a double take." vermilionrugs.com



▲ TRAY CHIC OTTOMAN
"Perfect for a family room—prop your feet on it or sit on it. The tray in the center also pulls out." bunnywilliamshome.com



< PURPLE AND PINK BED LINENS
"These colors together are so pretty and fresh. You can almost smell the crispness." leontine linens.com



PAINTED TRUMEAU MIRROR
"Made from reclaimed wood with glamorous parcel-gilt details." elizabeth pash.com



▲ MOHAIRS AND PRINTS
"I love the rich colors and textures of Clarence House mohairs. They're durable yet luxe. Great for sofas." clarencehouse.com. "I'm such a fan of Raoul Textiles' updated colorways and classic patterns. They go easily from city to country." raoultextiles.com

WE SENT LINDSEY TO SHOP ETHAN ALLEN. HERE'S WHAT SHE FOUND!
ethanallen.com



"I imagine the **Chrysiene Side Chair** around a circular, skirted table. A lovely cane back." From \$819.



"I've got a soft spot for blue and white. I'd use the **Petite Decorative Tray** as a catch-all on an entry table." \$139.



"The twig-shaped, brass-finish legs on the **Branch Console Table** are fabulous." \$449.