

CONNECTICUT COTTAGES & GARDENS

www.CTCANDG.COM | MARCH/APRIL 2009

LUXURY REDEFINED

DESIGNERS, ARCHITECTS AND BUILDERS WEIGH IN
EXCLUSIVE EXCERPT FROM SANDI HABER FIFIELD'S
WALKING THROUGH THE WORLD

WEST COAST DESIGNERS VENTURE EAST



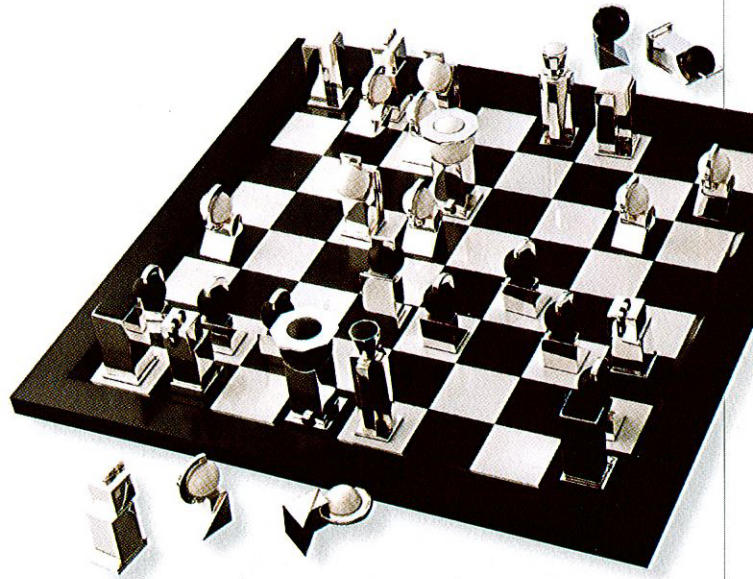
Daring Décolletage

The Emerald Sunken Treasure necklace from Subversive is a sculptural statement made of vintage chains and Austrian cut crystals. \$575, through Kisan Concept Store, 125 Greene St., NYC, (212) 475-2470 or www.subversivejewelry.com.

—S.F.

Keeping It In Check

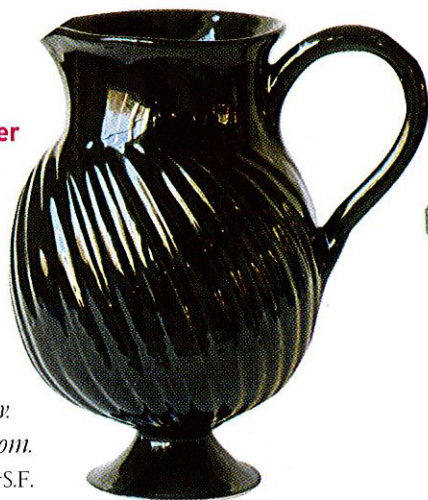
Remember—it's not whether or not you win that matters, but how you play the game. Corner the ultimate luxury at home with an ivory, ebony and silver chess set from Puiforcat. \$95,000, through Hoagland's of Greenwich, 175 Greenwich Ave., Greenwich, (203) 869-2127 or www.puiforcat.com. —S.F.



Pour One Over

Springtime libations find a suitable home in Frances Palmer's hand-crafted earthenware pitcher. \$275, through Bond & Green, 136 Main St., #12, Westport, (203) 227-1300 or www.francespalmerpottery.com.

—S.F.



Bunny and the Bees

Curated under Bunny Williams' tasteful eye, BeeLine Home offers a range of unique home furnishings, each chosen or designed with a special touch. Rosewood Table, \$4450, www.beelinehome.com. —M.M.

STORE STATS

EYE CANDY INDULGE YOUR INNER PREPSTER AT THE GOODY SHOP, OPEN MARCH 30. TELEVISION TRENDS EXPERT AND PUBLICIST RACHEL FLORIO CURATES A FUN MIX OF FASHION ACCESSORIES, GIFTS, BABY ITEMS AND MORE. 1046 POST RD. E., WESTPORT, (203) 557-0200. —M.M.

CHIC SHOPPING AFTER SPENDING THE PAST 25 YEARS WORKING AS A DECORATOR, LISA LOVE OPENS HER OWN STORE, LOVE & CO. COUNTRY CHIC. LOVE OFFERS SERVICES SUCH AS SPACE PLANNING, AS WELL AS A SELECTION OF UNIQUE FURNITURE AND GIFTS—PROVIDING A LITTLE SOMETHING STYLISH FOR EVERYONE. 68 CHURCH LN., WESTPORT, (203) 226-0350. —K.J.