

T-SHIRT

# BODY MEASUREMENTS



## CHEST

Measure around your torso, under your arms around the fullest part of your chest.

---

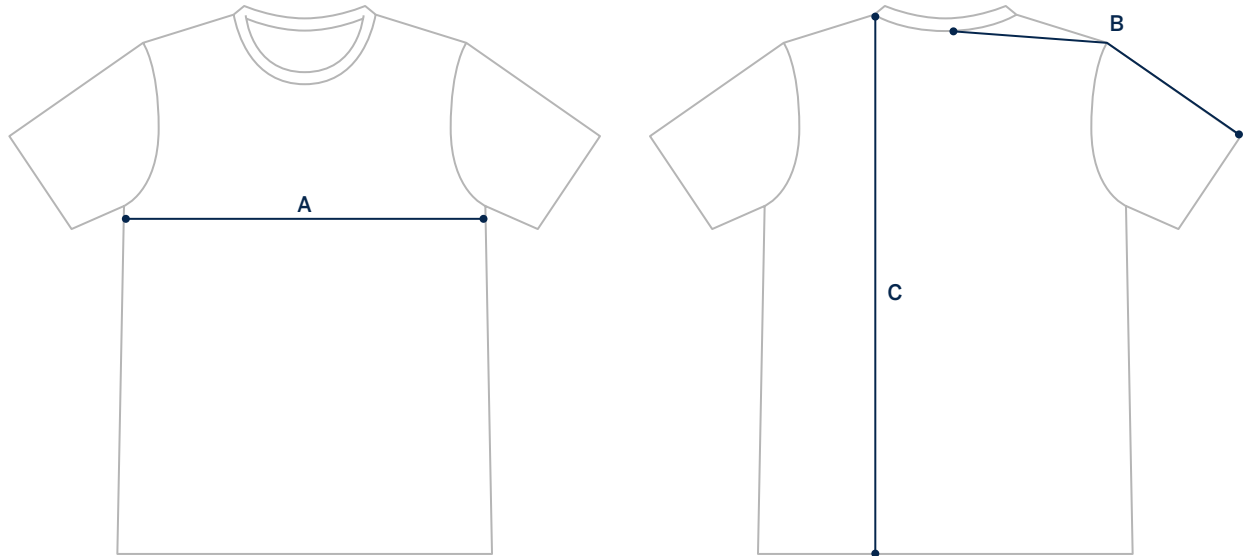
## MEASUREMENTS

SIZE	XS	S	M	L	XL	XXL
CHEST	32-34"	35-37"	38-40"	41-43"	44-46"	47-49"

## T-SHIRT

# GARMENT MEASUREMENTS

The most precise way of finding your size. Measure a garment you love and compare to our garment measurements.



## MEASUREMENTS

SIZE	XS	S	M	L	XL	XXL
A: CHEST	17 ½"	19"	20 ½"	22"	23 ½"	25 "
B: SLEEVES	16"	16 ¾"	17 ½"	18 ¼"	19"	19 ¾"
C: LENGTH	27 ¼"	27 ¼"	28"	29 ¼"	30 ½"	31 ¾"