

SHORT SLEEVE SHIRT - SLIM FIT

BODY MEASUREMENTS

NECK

Measure around the middle of your neck, leaving the tape loose.

WAIST

Measure around your natural waist, keeping the tape a bit loose.

CHEST

Measure around your torso, under your arms around the fullest part of your chest.



SLIM FIT MEASUREMENTS

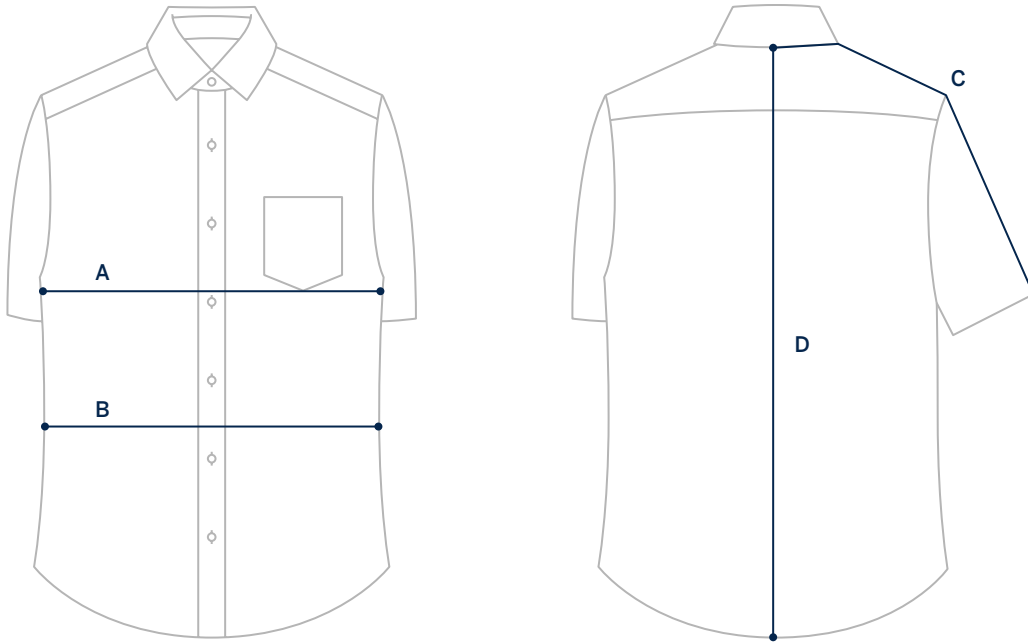
This short sleeve button-down is in our "Slim Fit" - our modern, tapered fit. Also, our most popular fit.

SIZE	XS	S	M	L	XL
NECK	13 ½-14"	14-14 ½"	15-15 ½"	16-16 ½"	17-17 ½"
CHEST	32-34"	35-37"	38-40"	41-43"	44-46"
WAIST	26-28"	29-31"	32-34"	35-37"	38-40"

SHORT SLEEVE SHIRT - SLIM FIT

GARMENT MEASUREMENTS

The most precise way of finding your size. Measure a garment you love and compare to our garment measurements.



SLIM FIT MEASUREMENTS

This short sleeve button-down is in our "Slim Fit" - our modern, tapered fit. Also, our most popular fit.

SIZE	XS	S	M	L	XL
A: CHEST	18 ⁷ / ₈ "	20 ³ / ₈ "	21 ⁷ / ₈ "	23 ³ / ₈ "	24 ⁷ / ₈ "
B: WAIST	17 ³ / ₈ "	18 ⁷ / ₈ "	20 ³ / ₈ "	21 ⁷ / ₈ "	23 ³ / ₈ "
C: SLEEVES	17 ⁵ / ₈ "	18 ³ / ₈ "	19 ¹ / ₈ "	19 ⁷ / ₈ "	20 ⁵ / ₈ "
D: LENGTH	29"	29 ¹ / ₂ "	30"	30 ¹ / ₂ "	31"