

# BODY MEASUREMENTS



**CHEST**

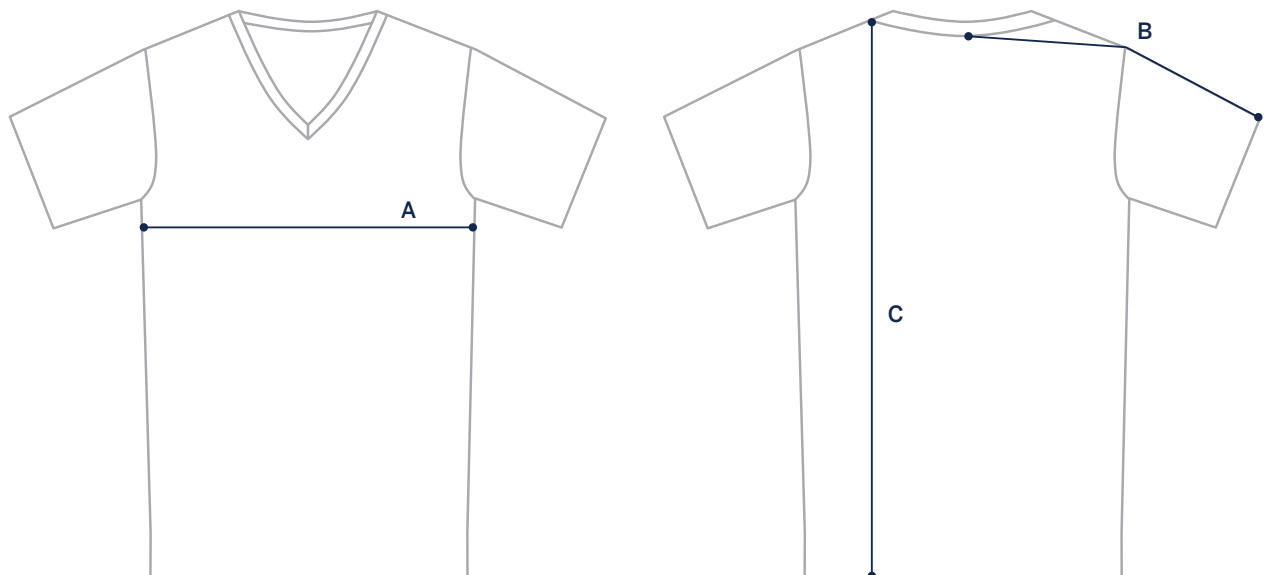
Measure around your torso, under your arms around the fullest part of your chest.

## MEASUREMENTS

SIZE	XS	S	M	L	XL	XXL
CHEST	32–34"	35–37"	38–40"	41–43"	44–46"	47–49"

# GARMENT MEASUREMENTS

The most precise way of finding your size. Measure a garment you love and compare to our garment measurements.



## MEASUREMENTS

SIZE	XS	S	M	L	XL	XXL
A: CHEST	16 ½"	18"	19 ½"	21"	22 ½"	24 "
B: SLEEVES	15 ¾"	16 ⅜"	17"	17 ⅝"	18 ¼"	18 ⅞"
C: LENGTH	29 ¼"	29 ¼"	30"	31 ¼"	32 ½"	33 ¾"