



LED RECESSED MINI PANEL

► **DESIGN** - LED RECESSED MINI PANEL with a classic, low-profile design is an ideal solution for low ceilings. This fixture has a J-box, plug & twist connector, spring-loaded clips, and requires only 2" of ceiling space, making the installation process quick and easy. The acrylic lens with a 110° beam angle and CRI90+ grants you even light. It is designed to operate on 120V circuits.

► **LED RECESSED MINI PANEL GIMBAL** - with 25° swivel lens is a perfect for sloped ceilings and directional lighting.

► **COLOR SELECTABLE** - You can choose either a 2,700K soft white, 3,000K warm white, 3,500K neutral white, 4,000K cool white, or 5,000K daylight color temperature.

► **DIMMING** - Smooth triac dimming capabilities ranging from 10% to 100% with modern LED dimmers allow you to control the look and feel of your space.

► **INSTALLATION** - This fixture is IC rated so there is no can or any other housing required. It is also Wet Locations rated, making it perfect for kitchen, bathroom or any other common areas.

► **ADVANTAGES** - With a lifespan of 54,000 hours, these fixtures are made to last decades under normal operation! ASD provides a 5-year limited warranty along with UL and Energy Star certifications to guarantee top quality products and safety!

Catalog number	
Notes	
Type	



Finish:	White	Bronze
	Nickel	Black

Model	Size	Watts	Voltage	Dimmable	Lumens	CCT	Finish	Dimensions	Type
JBR ROUND									
ASD-JBR-3D6AC-WH-6PACK	3 inch	6W	120 V	TRIAC	420/445/460/455/436 lm	5CCT (2,700/3,000/3,500/4,000/5,000 K)	White	3-1/4" x 5/8"	Round
ASD-JBR-3D6AC-NK-6PACK	3 inch	6W	120 V	TRIAC	420/445/460/455/436 lm	5CCT (2,700/3,000/3,500/4,000/5,000 K)	Brushed nickel	3-1/4" x 5/8"	Round
ASD-JBR-3D6AC-BZ-6PACK	3 inch	6W	120 V	TRIAC	420/445/460/455/436 lm	5CCT (2,700/3,000/3,500/4,000/5,000 K)	Bronze	3-1/4" x 5/8"	Round
ASD-JBR-3D6AC-BK-6PACK	3 inch	6W	120 V	TRIAC	420/445/460/455/436 lm	5CCT (2,700/3,000/3,500/4,000/5,000 K)	Black	3-1/4" x 5/8"	Round
ASD-JBR-4D12AC-WH-6PACK	4 inch	12W	120 V	TRIAC	780/839/893/861/860 lm	5CCT (2,700/3,000/3,500/4,000/5,000 K)	White	4-11/16" x 5/8"	Round
ASD-JBR-4D12AC-WH-12PACK	4 inch	12W	120 V	TRIAC	780/839/893/861/860 lm	5CCT (2,700/3,000/3,500/4,000/5,000 K)	White	4-11/16" x 5/8"	Round
ASD-JBR-4D12AC-NK-6PACK	4 inch	12W	120 V	TRIAC	780/839/893/861/860 lm	5CCT (2,700/3,000/3,500/4,000/5,000 K)	Brushed nickel	4-11/16" x 5/8"	Round
ASD-JBR-4D12AC-BZ-6PACK	4 inch	12W	120 V	TRIAC	780/839/893/861/860 lm	5CCT (2,700/3,000/3,500/4,000/5,000 K)	Bronze	4-11/16" x 5/8"	Round
ASD-JBR-4D12AC-BK-6PACK	4 inch	12W	120 V	TRIAC	780/839/893/861/860 lm	5CCT (2,700/3,000/3,500/4,000/5,000 K)	Black	4-11/16" x 5/8"	Round
ASD-JBR-6D15AC-WH-6PACK	6 inch	15W	120 V	TRIAC	1,100/1,137/1,225/1,153/1,094 lm	5CCT (2,700/3,000/3,500/4,000/5,000 K)	White	6-5/8" x 5/8"	Round
ASD-JBR-6D15AC-WH-12PACK	6 inch	15W	120 V	TRIAC	1,100/1,137/1,225/1,153/1,094 lm	5CCT (2,700/3,000/3,500/4,000/5,000 K)	White	6-5/8" x 5/8"	Round
ASD-JBR-6D15AC-NK-6PACK	6 inch	15W	120 V	TRIAC	1,100/1,137/1,225/1,153/1,094 lm	5CCT (2,700/3,000/3,500/4,000/5,000 K)	Brushed nickel	6-5/8" x 5/8"	Round
ASD-JBR-6D15AC-BZ-6PACK	6 inch	15W	120 V	TRIAC	1,100/1,137/1,225/1,153/1,094 lm	5CCT (2,700/3,000/3,500/4,000/5,000 K)	Bronze	6-5/8" x 5/8"	Round
ASD-JBR-6D15AC-BK-6PACK	6 inch	15W	120 V	TRIAC	1,100/1,137/1,225/1,153/1,094 lm	5CCT (2,700/3,000/3,500/4,000/5,000 K)	Black	6-5/8" x 5/8"	Round
ASD-JBR-8D20AC-WH	8 inch	20W	120 V	TRIAC	1,600/1,650/1,688/1,746/1,633 lm	5CCT (2,700/3,000/3,500/4,000/5,000 K)	White	8-11/16" x 5/8"	Round
ASD-JBR-8D20AC-BK	8 inch	20W	120 V	TRIAC	1,600/1,650/1,688/1,746/1,633 lm	5CCT (2,700/3,000/3,500/4,000/5,000 K)	Black	8-11/16" x 5/8"	Round
ASD-JBR-12D24AC-WH	12 inch	24W	120 V	TRIAC	1,950/2,142/2,138/2,169/2,077 lm	5CCT (2,700/3,000/3,500/4,000/5,000 K)	White	11-5/8" x 5/8"	Round
ASD-JBR-12D24AC-BK	12 inch	24W	120 V	TRIAC	1,950/2,142/2,138/2,169/2,077 lm	5CCT (2,700/3,000/3,500/4,000/5,000 K)	Black	11-5/8" x 5/8"	Round
JBS SQUARE									
ASD-JBS-3D6AC-WH-6PACK	3 inch	6W	120 V	TRIAC	420/442/456/445/430 lm	5CCT (2,700/3,000/3,500/4,000/5,000 K)	White	3-1/4" x 3-1/4" x 9/16"	Square
ASD-JBS-3D6AC-NK-6PACK	3 inch	6W	120 V	TRIAC	420/442/456/445/430 lm	5CCT (2,700/3,000/3,500/4,000/5,000 K)	Brushed nickel	3-1/4" x 3-1/4" x 9/16"	Square
ASD-JBS-3D6AC-BZ-6PACK	3 inch	6W	120 V	TRIAC	420/442/456/445/430 lm	5CCT (2,700/3,000/3,500/4,000/5,000 K)	Bronze	3-1/4" x 3-1/4" x 9/16"	Square
ASD-JBS-3D6AC-BK-6PACK	3 inch	6W	120 V	TRIAC	420/442/456/445/430 lm	5CCT (2,700/3,000/3,500/4,000/5,000 K)	Black	3-1/4" x 3-1/4" x 9/16"	Square
ASD-JBS-4D12AC-WH-6PACK	4 inch	12W	120 V	TRIAC	750/767/736/784/750 lm	5CCT (2,700/3,000/3,500/4,000/5,000 K)	White	4-5/8" x 4-5/8" x 9/16"	Square
ASD-JBS-4D12AC-NK-6PACK	4 inch	12W	120 V	TRIAC	750/767/736/784/750 lm	5CCT (2,700/3,000/3,500/4,000/5,000 K)	Brushed nickel	4-5/8" x 4-5/8" x 9/16"	Square
ASD-JBS-4D12AC-BZ-6PACK	4 inch	12W	120 V	TRIAC	750/767/736/784/750 lm	5CCT (2,700/3,000/3,500/4,000/5,000 K)	Bronze	4-5/8" x 4-5/8" x 9/16"	Square
ASD-JBS-4D12AC-BK-6PACK	4 inch	12W	120 V	TRIAC	750/767/736/784/750 lm	5CCT (2,700/3,000/3,500/4,000/5,000 K)	Black	4-5/8" x 4-5/8" x 9/16"	Square
ASD-JBS-6D15AC-WH-6PACK	6 inch	15W	120 V	TRIAC	1,050/1,117/1,197/1,144/1,095 lm	5CCT (2,700/3,000/3,500/4,000/5,000 K)	White	6-9/16" x 6-9/16" x 9/16"	Square
ASD-JBS-6D15AC-NK-6PACK	6 inch	15W	120 V	TRIAC	1,050/1,117/1,197/1,144/1,095 lm	5CCT (2,700/3,000/3,500/4,000/5,000 K)	Brushed nickel	6-9/16" x 6-9/16" x 9/16"	Square
ASD-JBS-6D15AC-BZ-6PACK	6 inch	15W	120 V	TRIAC	1,050/1,117/1,197/1,144/1,095 lm	5CCT (2,700/3,000/3,500/4,000/5,000 K)	Bronze	6-9/16" x 6-9/16" x 9/16"	Square
ASD-JBS-6D15AC-BK-6PACK	6 inch	15W	120 V	TRIAC	1,050/1,117/1,197/1,144/1,095 lm	5CCT (2,700/3,000/3,500/4,000/5,000 K)	Black	6-9/16" x 6-9/16" x 9/16"	Square
ASD-JBS-8D20AC-WH	8 inch	20W	120 V	TRIAC	1,550/1,694/1,743/1,721/1,654 lm	5CCT (2,700/3,000/3,500/4,000/5,000 K)	White	8-11/16" x 8-11/16" x 9/16"	Square
ASD-JBS-8D20AC-BK	8 inch	20W	120 V	TRIAC	1,550/1,694/1,743/1,721/1,654 lm	5CCT (2,700/3,000/3,500/4,000/5,000 K)	Black	8-11/16" x 8-11/16" x 9/16"	Square

For most up-to-date spec sheets please refer to asd-lighting.com



LED RECESSED MINI PANEL

Model	Size	Watts	Voltage	Dimmable	Lumens	CCT	Finish	Dimensions	Type
ASD-JBS-12D24AC-WH	12 inch	24W	120 V	TRIAC	1,900/1,932/2,018/2,006/2,152 lm	5CCT (2,700/3,000/3,500/4,000/5,000 K)	White	11-9/16" x 11-9/16" x 9/16"	Square
ASD-JBS-12D24AC-BK	12 inch	24W	120 V	TRIAC	1,900/1,932/2,018/2,006/2,152 lm	5CCT (2,700/3,000/3,500/4,000/5,000 K)	Black	11-9/16" x 11-9/16" x 9/16"	Square
JBR-GB GIMBAL									
ASD-JBR-GB-3D6AC-WH-6PACK	3 inch	6W	120 V	TRIAC	435/449/463/461/443 lm	5CCT (2,700/3,000/3,500/4,000/5,000 K)	White	3-15/16" x 1"	Round
ASD-JBR-GB-3D6AC-BK-6PACK	3 inch	6W	120 V	TRIAC	435/449/463/461/443 lm	5CCT (2,700/3,000/3,500/4,000/5,000 K)	Black	3-15/16" x 1"	Round
ASD-JBR-GB-4D12AC-WH-6PACK	4 inch	12W	120 V	TRIAC	777/803/842/793/795 lm	5CCT (2,700/3,000/3,500/4,000/5,000 K)	White	5-1/8" x 1"	Round
ASD-JBR-GB-4D12AC-BK-6PACK	4 inch	12W	120 V	TRIAC	777/803/842/793/795 lm	5CCT (2,700/3,000/3,500/4,000/5,000 K)	Black	5-1/8" x 1"	Round
ASD-JBR-GB-6D15AC-WH-6PACK	6 inch	15W	120 V	TRIAC	1,085/1,156/1,232/1,208/1,184 lm	5CCT (2,700/3,000/3,500/4,000/5,000 K)	White	7-5/16" x 1-1/4"	Round
ASD-JBR-GB-6D15AC-BK-6PACK	6 inch	15W	120 V	TRIAC	1,085/1,156/1,232/1,208/1,184 lm	5CCT (2,700/3,000/3,500/4,000/5,000 K)	Black	7-5/16" x 1-1/4"	Round

PRODUCT SPECIFICATIONS:

Construction & Materials				
Housing	Aluminum			
Lens	PC			
Finish	White, Brushed nickel, Bronze, Black			
Weight	ASD-JBR-3D6AC-WH-6PACK	2.2 lbs (1 kg)	ASD-JBS-3D6AC-BZ-6PACK	2.6 lbs (1.2 kg)
	ASD-JBR-3D6AC-NK-6PACK		ASD-JBS-3D6AC-BK-6PACK	
	ASD-JBR-3D6AC-BK-6PACK		ASD-JBS-4D12AC-WH-6PACK	
	ASD-JBR-3D6AC-BK-6PACK	3.7 lbs (1.7 kg)	ASD-JBS-4D12AC-NK-6PACK	3.7 lbs (1.7 kg)
	ASD-JBR-4D12AC-WH-6PACK		ASD-JBS-4D12AC-BZ-6PACK	
	ASD-JBR-4D12AC-WH-12PACK		ASD-JBS-4D12AC-BK-6PACK	
	ASD-JBR-4D12AC-NK-6PACK	3.7 lbs (1.7 kg)	ASD-JBS-6D15AC-WH-6PACK	5 lbs (2.3 kg)
	ASD-JBR-4D12AC-BZ-6PACK		ASD-JBS-6D15AC-NK-6PACK	
	ASD-JBR-4D12AC-BK-6PACK		ASD-JBS-6D15AC-BZ-6PACK	
	ASD-JBR-6D15AC-WH-6PACK	4.4 lbs (2 kg)	ASD-JBS-6D15AC-BK-6PACK	1.1 lbs (0.5 kg)
	ASD-JBR-6D15AC-WH-12PACK	9.3 lbs (4.2 kg)	ASD-JBS-8D20AC-WH	
	ASD-JBR-6D15AC-NK-6PACK	4.4 lbs (2 kg)	ASD-JBS-8D20AC-BK	
	ASD-JBR-6D15AC-BZ-6PACK		ASD-JBS-12D24AC-WH	1.8 lbs (0.8 kg)
	ASD-JBR-6D15AC-BK-6PACK		ASD-JBS-12D24AC-BK	
	ASD-JBR-8D20AC-WH	1.1 lbs (0.5 kg)	ASD-JBR-GB-3D6AC-WH-6PACK	3.8 lbs (1.7 kg)
	ASD-JBR-8D20AC-BK	1.5 lbs (0.7 kg)	ASD-JBR-GB-3D6AC-BK-6PACK	
	ASD-JBR-12D24AC-WH		1.5 lbs (0.7 kg)	ASD-JBR-GB-4D12AC-WH-6PACK
	ASD-JBR-12D24AC-BK	ASD-JBR-GB-4D12AC-BK-6PACK		
ASD-JBS-3D6AC-WH-6PACK	2.6 lbs (1.2 kg)	ASD-JBR-GB-6D15AC-WH-6PACK	8.1 lbs (3.7 kg)	
ASD-JBS-3D6AC-NK-6PACK		ASD-JBR-GB-6D15AC-BK-6PACK		
Environmental system				
Work environment	Suitable for Wet Locations, IP43			
Operating temperature	-4°F to 104°F (-20°C to 40°C)			
L-70 Life	> 54,000 hrs			
Optical system				
Luminous flux	ASD-JBR-3D6AC-WH-6PACK	420/445/460/455/436 lm	ASD-JBS-3D6AC-BZ-6PACK	420/442/456/445/430 lm
	ASD-JBR-3D6AC-NK-6PACK		ASD-JBS-3D6AC-BK-6PACK	
	ASD-JBR-3D6AC-BZ-6PACK		ASD-JBS-4D12AC-WH-6PACK	
	ASD-JBR-3D6AC-BK-6PACK	780/839/893/861/860 lm	ASD-JBS-4D12AC-NK-6PACK	750/767/736/784/750 lm
	ASD-JBR-4D12AC-WH-6PACK		ASD-JBS-4D12AC-BZ-6PACK	
	ASD-JBR-4D12AC-WH-12PACK		ASD-JBS-4D12AC-BK-6PACK	
	ASD-JBR-4D12AC-NK-6PACK	780/839/893/861/860 lm	ASD-JBS-6D15AC-WH-6PACK	1,050/1,117/1,197/1,144/1,095 lm
	ASD-JBR-4D12AC-BZ-6PACK		ASD-JBS-6D15AC-NK-6PACK	
	ASD-JBR-4D12AC-BK-6PACK		ASD-JBS-6D15AC-BZ-6PACK	
	ASD-JBR-6D15AC-WH-6PACK	1,100/1,137/1,225/1,153/1,094 lm	ASD-JBS-6D15AC-BK-6PACK	1,550/1,694/1,743/1,721/1,654 lm
	ASD-JBR-6D15AC-WH-12PACK		ASD-JBS-8D20AC-WH	
	ASD-JBR-6D15AC-NK-6PACK		ASD-JBS-8D20AC-BK	
	ASD-JBR-6D15AC-BZ-6PACK	1,600/1,650/1,688/1,746/1,633 lm	ASD-JBS-12D24AC-WH	1,900/1,932/2,018/2,006/2,152 lm
	ASD-JBR-6D15AC-BK-6PACK		ASD-JBS-12D24AC-BK	
	ASD-JBR-8D20AC-WH		ASD-JBR-GB-3D6AC-WH-6PACK	
	ASD-JBR-8D20AC-BK	ASD-JBR-GB-3D6AC-BK-6PACK		
	ASD-JBR-12D24AC-WH	1,950/2,142/2,138/2,169/2,077 lm	ASD-JBR-GB-4D12AC-WH-6PACK	777/803/842/793/795 lm
	ASD-JBR-12D24AC-BK		ASD-JBR-GB-4D12AC-BK-6PACK	
ASD-JBS-3D6AC-WH-6PACK	420/442/456/445/430 lm	ASD-JBR-GB-6D15AC-WH-6PACK	1,085/1,156/1,232/1,208/1,184 lm	
ASD-JBS-3D6AC-NK-6PACK		ASD-JBR-GB-6D15AC-BK-6PACK		
Color temperature	5CCT (2,700/3,000/3,500/4,000/5,000 K)			
CRI	> 90			

For most up-to-date spec sheets please refer to asd-lighting.com



LED RECESSED MINI PANEL

Electrical system					
Input voltage	120 V				
Max input current	ASD-JBR-3D6AC-WH-6PACK	0.07 A	ASD-JBS-3D6AC-BZ-6PACK	0.07 A	
	ASD-JBR-3D6AC-NK-6PACK		ASD-JBS-3D6AC-BK-6PACK		
	ASD-JBR-3D6AC-BZ-6PACK		ASD-JBS-4D12AC-WH-6PACK		
	ASD-JBR-3D6AC-BK-6PACK	0.14 A	ASD-JBS-4D12AC-NK-6PACK	0.14 A	
	ASD-JBR-4D12AC-WH-6PACK		ASD-JBS-4D12AC-BZ-6PACK		
	ASD-JBR-4D12AC-WH-12PACK		ASD-JBS-4D12AC-BK-6PACK		
	ASD-JBR-4D12AC-NK-6PACK	0.14 A	ASD-JBS-6D15AC-WH-6PACK	0.17 A	
	ASD-JBR-4D12AC-BZ-6PACK		ASD-JBS-6D15AC-NK-6PACK		
	ASD-JBR-4D12AC-BK-6PACK		ASD-JBS-6D15AC-BZ-6PACK		
	ASD-JBR-6D15AC-WH-6PACK	0.17 A	ASD-JBS-6D15AC-BK-6PACK	0.17 A	
	ASD-JBR-6D15AC-WH-12PACK		ASD-JBS-8D20AC-WH		
	ASD-JBR-6D15AC-NK-6PACK		ASD-JBS-8D20AC-BK		
	ASD-JBR-6D15AC-BZ-6PACK	0.23 A	ASD-JBS-12D24AC-WH	0.23 A	
	ASD-JBR-6D15AC-BK-6PACK		ASD-JBS-12D24AC-BK		
	ASD-JBR-8D20AC-WH		ASD-JBR-GB-3D6AC-WH-6PACK		
	ASD-JBR-8D20AC-BK	0.23 A	ASD-JBR-GB-3D6AC-BK-6PACK	0.07 A	
	ASD-JBR-12D24AC-WH		ASD-JBR-GB-4D12AC-WH-6PACK		
	ASD-JBR-12D24AC-BK		ASD-JBR-GB-4D12AC-BK-6PACK		
	Inrush current (Action time)	ASD-JBS-3D6AC-WH-6PACK	0.07 A	ASD-JBR-GB-6D15AC-WH-6PACK	0.17 A
		ASD-JBS-3D6AC-NK-6PACK		ASD-JBR-GB-6D15AC-BK-6PACK	
ASD-JBR-3D6AC-WH-6PACK		ASD-JBS-3D6AC-BZ-6PACK		16 A (0.16 S)	
ASD-JBR-3D6AC-NK-6PACK		ASD-JBS-3D6AC-BK-6PACK			
ASD-JBR-3D6AC-BZ-6PACK		ASD-JBS-4D12AC-WH-6PACK	23 A (0.16 S)		
ASD-JBR-3D6AC-BK-6PACK		ASD-JBS-4D12AC-NK-6PACK			
ASD-JBR-4D12AC-WH-6PACK		ASD-JBS-4D12AC-BZ-6PACK			
ASD-JBR-4D12AC-WH-12PACK		23 A (0.16 S)	ASD-JBS-4D12AC-BK-6PACK	29 A (0.18 S)	
ASD-JBR-4D12AC-NK-6PACK			ASD-JBS-6D15AC-WH-6PACK		
ASD-JBR-4D12AC-BZ-6PACK			ASD-JBS-6D15AC-NK-6PACK		
ASD-JBR-4D12AC-BK-6PACK		29 A (0.18 S)	ASD-JBS-6D15AC-BZ-6PACK	29 A (0.18 S)	
ASD-JBR-6D15AC-WH-6PACK			ASD-JBS-6D15AC-BK-6PACK		
ASD-JBR-6D15AC-WH-12PACK			ASD-JBS-8D20AC-WH		
ASD-JBR-6D15AC-NK-6PACK		29 A (0.18 S)	ASD-JBS-8D20AC-BK	39 A (0.18 S)	
ASD-JBR-6D15AC-BZ-6PACK			ASD-JBS-12D24AC-WH		
ASD-JBR-6D15AC-BK-6PACK			ASD-JBS-12D24AC-BK		
ASD-JBR-8D20AC-WH		39 A (0.18 S)	ASD-JBR-GB-3D6AC-WH-6PACK	16 A (0.16 S)	
ASD-JBR-8D20AC-BK			ASD-JBR-GB-3D6AC-BK-6PACK		
ASD-JBR-12D24AC-WH			ASD-JBR-GB-4D12AC-WH-6PACK		
ASD-JBR-12D24AC-BK		41 A (0.18 S)	ASD-JBR-GB-4D12AC-BK-6PACK	23 A (0.16 S)	
ASD-JBS-3D6AC-WH-6PACK	ASD-JBR-GB-6D15AC-WH-6PACK				
ASD-JBS-3D6AC-NK-6PACK	ASD-JBR-GB-6D15AC-BK-6PACK				
Off state power	0W				
Power consumption	ASD-JBR-3D6AC-WH-6PACK	6W	ASD-JBS-3D6AC-BZ-6PACK	6W	
	ASD-JBR-3D6AC-NK-6PACK		ASD-JBS-3D6AC-BK-6PACK		
	ASD-JBR-3D6AC-BZ-6PACK		ASD-JBS-4D12AC-WH-6PACK		
	ASD-JBR-3D6AC-BK-6PACK	12W	ASD-JBS-4D12AC-NK-6PACK	12W	
	ASD-JBR-4D12AC-WH-6PACK		ASD-JBS-4D12AC-BZ-6PACK		
	ASD-JBR-4D12AC-WH-12PACK		ASD-JBS-4D12AC-BK-6PACK		
	ASD-JBR-4D12AC-NK-6PACK	12W	ASD-JBS-6D15AC-WH-6PACK	15W	
	ASD-JBR-4D12AC-BZ-6PACK		ASD-JBS-6D15AC-NK-6PACK		
	ASD-JBR-4D12AC-BK-6PACK		ASD-JBS-6D15AC-BZ-6PACK		
	ASD-JBR-6D15AC-WH-6PACK	15W	ASD-JBS-6D15AC-BK-6PACK	15W	
	ASD-JBR-6D15AC-WH-12PACK		ASD-JBS-8D20AC-WH		
	ASD-JBR-6D15AC-NK-6PACK		ASD-JBS-8D20AC-BK		
	ASD-JBR-6D15AC-BZ-6PACK	15W	ASD-JBS-12D24AC-WH	24W	
	ASD-JBR-6D15AC-BK-6PACK		ASD-JBS-12D24AC-BK		
	ASD-JBR-8D20AC-WH		ASD-JBR-GB-3D6AC-WH-6PACK		
	ASD-JBR-8D20AC-BK	20W	ASD-JBR-GB-3D6AC-BK-6PACK	6W	
	ASD-JBR-12D24AC-WH		ASD-JBR-GB-4D12AC-WH-6PACK		
	ASD-JBR-12D24AC-BK		ASD-JBR-GB-4D12AC-BK-6PACK		
ASD-JBS-3D6AC-WH-6PACK	24W	ASD-JBR-GB-6D15AC-WH-6PACK	12W		
ASD-JBS-3D6AC-NK-6PACK		ASD-JBR-GB-6D15AC-BK-6PACK			
ASD-JBS-3D6AC-BZ-6PACK		ASD-JBR-GB-6D15AC-WH-6PACK			
ASD-JBS-3D6AC-NK-6PACK	6W	ASD-JBR-GB-6D15AC-BK-6PACK	15W		
ASD-JBR-8D20AC-WH		ASD-JBR-GB-6D15AC-WH-6PACK			
ASD-JBR-8D20AC-BK		ASD-JBR-GB-6D15AC-BK-6PACK			
Power factor	> 0.9				
Output voltage	36 V				

For most up-to-date spec sheets please refer to asd-lighting.com

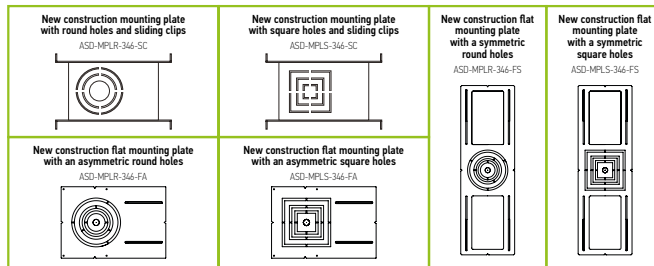


LED RECESSED MINI PANEL

Electrical system					
Max output current	ASD-JBR-3D6AC-WH-6PACK	0.146 A	ASD-JBS-3D6AC-BZ-6PACK	0.146 A	
	ASD-JBR-3D6AC-NK-6PACK		ASD-JBS-3D6AC-BK-6PACK		
	ASD-JBR-3D6AC-BZ-6PACK		ASD-JBS-4D12AC-WH-6PACK		0.293 A
	ASD-JBR-3D6AC-BK-6PACK		ASD-JBS-4D12AC-NK-6PACK		
	ASD-JBR-4D12AC-WH-6PACK	ASD-JBS-4D12AC-BZ-6PACK			
	ASD-JBR-4D12AC-WH-12PACK	ASD-JBS-4D12AC-BK-6PACK			
	ASD-JBR-4D12AC-NK-6PACK	0.293 A	ASD-JBS-6D15AC-WH-6PACK	0.366 A	
	ASD-JBR-4D12AC-BZ-6PACK		ASD-JBS-6D15AC-NK-6PACK		
	ASD-JBR-4D12AC-BK-6PACK		ASD-JBS-6D15AC-BZ-6PACK		
	ASD-JBR-6D15AC-WH-6PACK		ASD-JBS-6D15AC-BK-6PACK		
	ASD-JBR-6D15AC-WH-12PACK	0.366 A	ASD-JBS-8D20AC-WH	0.488 A	
	ASD-JBR-6D15AC-NK-6PACK		ASD-JBS-8D20AC-BK		
	ASD-JBR-6D15AC-BZ-6PACK		ASD-JBS-12D24AC-WH	0.586 A	
	ASD-JBR-6D15AC-BK-6PACK		ASD-JBS-12D24AC-BK		
	ASD-JBR-8D20AC-WH	0.488 A	ASD-JBR-GB-3D6AC-WH-6PACK	0.146 A	
	ASD-JBR-8D20AC-BK		ASD-JBR-GB-3D6AC-BK-6PACK		
	ASD-JBR-12D24AC-WH	0.586 A	ASD-JBR-GB-4D12AC-WH-6PACK	0.293 A	
	ASD-JBR-12D24AC-BK		ASD-JBR-GB-4D12AC-BK-6PACK		
	ASD-JBS-3D6AC-WH-6PACK	0.146 A	ASD-JBR-GB-6D15AC-WH-6PACK	0.366 A	
	ASD-JBS-3D6AC-NK-6PACK		ASD-JBR-GB-6D15AC-BK-6PACK		
Surge protection DM/CM	2.5 kV / 2.5 kV				

Dimming range			
10-100%			
Dimming compatible controls			
Brand	Lutron	Leviton	
Models	CTCL-153PDH-WH	S-600PR-WH	DB33K1
	DVW-603PGH-WH	CTCL-153P	1A2305
	MIR-600TH-WH	DV-600P	1F4205
	MACL-153M-WH	NT-1000	6633-P
	CT-603PGH-WH	S-603P	VP106
	DVCL-153P-WH	S-600P	IPL06
	SLV-600P-WH	4X603	6683
			6674
		6672	
Regular and voluntary certifications			
5-year limited warranty			
Energy Star listed			
UL certified E473854			
Title 24 JA8-2022 compliant (JBR models only)			

ACCESSORIES (sold separately):

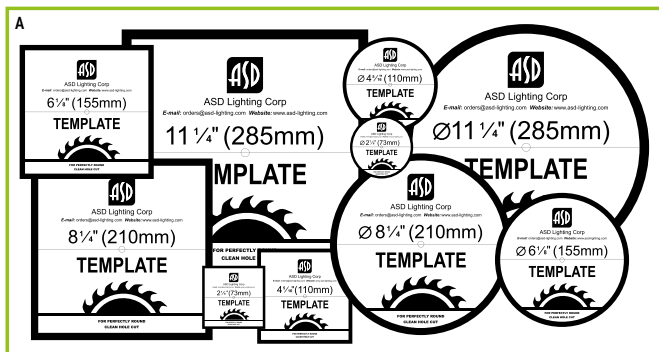


ACCESSORY COMPATIBILITY LIST:

Accessories	Models	New construction flat mounting plate with an asymmetric round holes					
		ASD-MPLR-346-FA-6PACK	ASD-MPLS-346-FA	ASD-MPLR-346-FS-6PACK	ASD-MPLS-346-FS	ASD-MPLR-346-SC-6PACK	ASD-MPLS-346-SC
ASD-JBR/ ASD-JBR-GB	3"	•		•		•	
	4"	•		•		•	
	6"	•		•		•	
	8"						
	12"						
ASD-JBS	3"		•		•		•
	4"		•		•		•
	6"		•		•		•
	8"						
	12"						

PACKAGE CONTENTS:

Description	Q-ty
LED Recessed Mini Panel	1 (6 for 6 pack; 12 for 12 pack)
Template for 3, 4, 6, 8 or 12 inch (A)	1
Box	1



For most up-to-date spec sheets please refer to asd-lighting.com



LED RECESSED MINI PANEL

INSTALLATION GUIDE

IMPORTANT SAFETY INFORMATION:

Please read all the instructions below before installation.

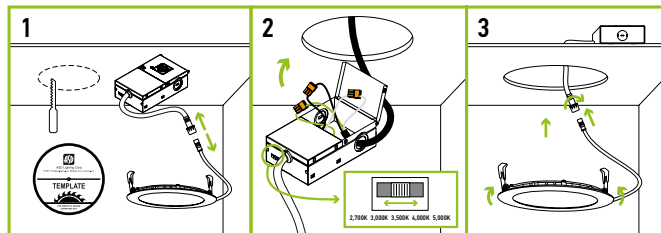
- ▶ Make sure that the supply voltage corresponds to the rated product voltage.
- ▶ The product must be installed by a qualified electrician in accordance with the National Electrical Code and corresponding local codes.
- ▶ If the product is damaged, do not use it.

INSTALLATION STEPS:

1. Use template to cut an appropriate sized hole. Disconnect the fixture from the junction box.

2. Open junction box. Connect the wires: Black to Black, White to White, Green to Green. Secure the connection with quick connector. Choose needed color temperature by adjusting the switch. Close the junction box.

3. Insert the junction box into the cut hole, leaving the connection cable outside. Connect the fixture to the Junction box inserting the cable and securing it with a cap. Push the spring loaded clips upwards and insert the fixture base into the mounting hole. Release the clips, so the fixture fits snugly.



* The fixture is suitable for ceiling thickness of 10-25 mm.

⚠ WARNING

RISK OF PERSONAL INJURY – READ and follow all WARNINGS and installation instructions. Keep or give to the owner for future reference.

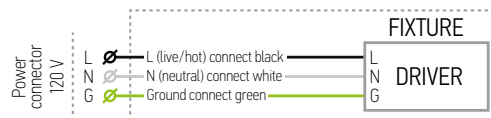
Risk of cuts: Wear gloves to prevent cuts or abrasions when removing from carton, handling, installing, and maintaining this product.

Risk of electric shock: This product must be installed in accordance with the applicable installation code by a person familiar with the construction and operation of the product and the hazards involved.

Risk of Fire: Minimum 194°F supply conductors. Consult a qualified electrician to ensure correct branch circuit conductor.

ASD® assumes no responsibility for claims arising out of improper or careless Installation or handling of this product.

ELECTRICAL SCHEMATIC DIAGRAM:

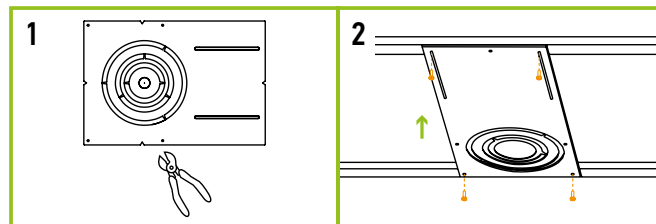


MOUNTING PLATE INSTALLATION

ASD-MPLR-346-FA	ASD-MPLR-346-FS	ASD-MPLR-346-SC
ASD-MPLS-346-FA	ASD-MPLS-346-FS	ASD-MPLS-346-SC

sold separately:

1. Remove the metal ring from the mounting plate according to the size of fixture.
2. Place the mounting plate and secure its position with screws on the beams.



ORDERING INFORMATION

Model	UPC	Pcs. per carton	Carton size	Carton weight	GTIN 14
JBR ROUND					
ASD-JBR-3D6AC-WH-6PACK	810050737449	12	17.1" x 10" x 4.5"	6.2 lb	10810050737446
ASD-JBR-3D6AC-NK-6PACK	810050738385	12	17.1" x 10" x 4.5"	6.2 lb	20810050738389
ASD-JBR-3D6AC-BZ-6PACK	819201022458	12	17.1" x 10" x 4.5"	6.2 lb	20819201022452
ASD-JBR-3D6AC-BK-6PACK	810050737456	12	17.1" x 10" x 4.5"	6.2 lb	10810050737453
ASD-JBR-4D12AC-WH-6PACK	810050737197	12	12.6" x 12.6" x 6.3"	9.3 lb	10810050737194
ASD-JBR-4D12AC-WH-12PACK	810050739719	12	12" x 11.6" x 5.3"	8.8 lb	-
ASD-JBR-4D12AC-NK-6PACK	810050738392	12	12.6" x 12.6" x 6.3"	9.3 lb	20810050738396
ASD-JBR-4D12AC-BZ-6PACK	810050738903	12	12.6" x 12.6" x 6.3"	9.3 lb	10810050738900
ASD-JBR-4D12AC-BK-6PACK	810050737210	12	12.6" x 12.6" x 6.3"	9.3 lb	10810050737217
ASD-JBR-6D15AC-WH-6PACK	810050737241	12	13" x 12.4" x 8"	11.1 lb	10810050737248
ASD-JBR-6D15AC-NK-12PACK	810050739726	12	12.4" x 10.8" x 7.3"	10.4 lb	-
ASD-JBR-6D15AC-NK-6PACK	810050738408	12	13" x 12.4" x 8"	11.1 lb	20810050738402
ASD-JBR-6D15AC-BZ-6PACK	810050738910	12	13" x 12.4" x 8"	11.1 lb	10810050738917
ASD-JBR-6D15AC-BK-6PACK	810050737265	12	13" x 12.4" x 8"	11.1 lb	10810050737262
ASD-JBR-8D20AC-WH	810050737470	4	9.7" x 9.7" x 9.5"	6 lb	10810050737477
ASD-JBR-8D20AC-BK	810050737487	4	9.7" x 9.7" x 9.5"	6 lb	10810050737484
ASD-JBR-12D24AC-WH	810050737494	4	12.4" x 9.6" x 12.4"	7.9 lb	10810050737491
ASD-JBR-12D24AC-BK	810050737500	4	12.4" x 9.6" x 12.4"	7.9 lb	10810050737507

For most up-to-date spec sheets please refer to asd-lighting.com



LED RECESSED MINI PANEL

Model	UPC	Pcs. per carton	Carton size	Carton weight	GTIN 14
JBS SQUARE					
ASD-JBS-3D6AC-WH-6PACK	810050737524	12	17.1" x 10" x 4.5"	6.6 lb	10810050737521
ASD-JBS-3D6AC-NK-6PACK	810050738415	12	17.1" x 10" x 4.5"	6.6 lb	20810050738419
ASD-JBS-3D6AC-BZ-6PACK	819201022465	12	17.1" x 10" x 4.5"	6.6 lb	20819201022469
ASD-JBS-3D6AC-BK-6PACK	810050737548	12	17.1" x 10" x 4.5"	6.6 lb	10810050737545
ASD-JBS-4D12AC-WH-6PACK	810050737289	12	12.6" x 12.6" x 6.3"	9.3 lb	10810050737286
ASD-JBS-4D12AC-NK-6PACK	810050738422	12	12.6" x 12.6" x 6.3"	9.3 lb	20810050738426
ASD-JBS-4D12AC-BZ-6PACK	810050738927	12	12.6" x 12.6" x 6.3"	9.3 lb	10810050738924
ASD-JBS-4D12AC-BK-6PACK	810050737302	12	12.6" x 12.6" x 6.3"	9.3 lb	10810050737309
ASD-JBS-6D15AC-WH-6PACK	810050737326	12	14" x 12.4" x 8"	12.1 lb	10810050737323
ASD-JBS-6D15AC-NK-6PACK	810050738439	12	14" x 12.4" x 8"	12.1 lb	20810050738433
ASD-JBS-6D15AC-BZ-6PACK	810050738934	12	14" x 12.4" x 8"	12.1 lb	10810050738931
ASD-JBS-6D15AC-BK-6PACK	810050737562	12	14" x 12.4" x 8"	12.1 lb	10810050737569
ASD-JBS-8D20AC-WH	810050737579	4	10.4" x 9.7" x 9.5"	6.6 lb	10810050737576
ASD-JBS-8D20AC-BK	810050737586	4	10.4" x 9.7" x 9.5"	6.6 lb	10810050737583
ASD-JBS-12D24AC-WH	810050737593	4	13.4" x 9.7" x 12.3"	9.5 lb	10810050737590
ASD-JBS-12D24AC-BK	810050737609	4	13.4" x 9.7" x 12.3"	9.5 lb	10810050737606
JBR-GB GIMBAL					
ASD-JBR-GB-3D6AC-WH-6PACK	810050738613	12	16.1" x 11" x 5.3"	9.6 lb	10810050738610
ASD-JBR-GB-3D6AC-BK-6PACK	810050739382	12	16.1" x 11" x 5.3"	9.6 lb	10810050739389
ASD-JBR-GB-4D10AC-WH-6PACK	810050738620	12	11.4" x 10.8" x 12.6"	13.9 lb	10810050738627
ASD-JBR-GB-4D10AC-BK-6PACK	810050739405	12	11.4" x 10.8" x 12.6"	13.9 lb	10810050739402
ASD-JBR-GB-6D15AC-WH-6PACK	810050738637	12	17.7" x 13.8" x 8.9"	19.2 lb	10810050738634
ASD-JBR-GB-6D15AC-BK-6PACK	810050739429	12	17.7" x 13.8" x 8.9"	19.2 lb	10810050739426

ACCESSORIES:

Model	Name	Weight	Dimensions	UPC				
ASD-MPLR-346-FA-6PACK	New construction flat mounting plate with an asymmetric round hole	0.9 lb	13-1/4" x 9-1/16" x 1/16"	810050739344				
ASD-MPLS-346-FA	New construction flat mounting plate with an asymmetric square hole	0.9 lb	13-1/4" x 9-1/16" x 1/16"	810050733861				
ASD-MPLR-346-FS-6PACK	New construction flat mounting plate with a symmetric round hole	1 lb	26" x 8-1/4" x 1/16"	810050739351				
ASD-MPLS-346-FS	New construction flat mounting plate with a symmetric square hole	1 lb	26" x 8-1/4" x 1/16"	810050733885				
ASD-MPLR-346-SC-6PACK	New construction mounting plate with round holes and sliding clips	1.1 lb	14-3/8" x 10-9/16" x 1-5/8"	810050739337				
ASD-MPLS-346-SC	New construction mounting plate with square holes and sliding clips	1.1 lb	14-3/8" x 10-9/16" x 1-5/8"	810050731843				
Model	Pcs. in middle box	Middle box size	Middle box weight	GTIN 14 in middle box	Pcs. per carton	Carton size	Carton weight	GTIN 14 in carton
ASD-MPLR-346-FA-6PACK	-	-	-	-	4	14.4" x 9.8" x 3.2"	22.5 lb	10810050739341
ASD-MPLS-346-FA	6	9.3" x 0.6" x 13.6"	5.5 lb	10810050733868	24	14.4" x 9.8" x 3.1"	22.9 lb	20810050733865
ASD-MPLR-346-FS-6PACK	-	-	-	-	4	27.2" x 9.1" x 3.2"	25.2 lb	10810050739358
ASD-MPLS-346-FS	6	8.5" x 0.6" x 26.4"	6 lb	10810050733882	24	26" x 8.3" x 3.1"	24.6 lb	20810050733889
ASD-MPLR-346-SC-6PACK	-	-	-	-	2	17.3" x 11.9" x 13.4"	17 lb	10810050739334
ASD-MPLS-346-SC	6	15" x 11.2" x 7.5"	7.5 lb	10810050731840	12	23.2" x 15.6" x 8.3"	16.4 lb	20810050731847

For most up-to-date spec sheets please refer to asd-lighting.com

ASD LIGHTING CORP

E-mail: orders@asd-lighting.com | Web site: www.asd-lighting.com

