

# next

Heat IQ



For a better tomorrow, today.



Heat IQ



# Dependable performance : Unsurpassed efficiency.

**next** Series, Air to water Heat pumps. Designed to be gentle on our planet while meeting the home heating and hot water requirements of New Zealand's homes and your unique lifestyle.

## Easy on the planet.

**R 290** has a GWP of just 3. Considerably lower than other common refrigerants such as R32 at a GWP of 675 R290 is the GREEN future of heat pump technology.

## Lower emissions with increased performance .

Game changing technology achieving output with **70°** (\*real world) delivery temperatures, in climates right down to **-25°**. Suitable for under-floor & conventional radiators, even as a replacement appliance for an existing system.

## Easier to install and easier to configure.

Combined with **Hydro hub** for heating only, or heating with a conventional hot water cylinder, or combined with the all in one **Hydro Tower** all in one heating and hot water storage module. Installation, is simplified & efficiency optimized.

## Intuitive WIFI enabled control.

Configured and controlled via a clear and intuitive 6" touch screen interface incorporated into the Hydro unit , user control is extended to your smartphone.

## Engineer Accessible fault diagnosis.

An engineer granted remote access is able to remotely review and assess the appliance in the event of an issue



Hydro tower shown



## Easier on your bank balance, without quality compromise

Think of **next** as the Toyota Corolla of Heat pumps.

Well designed and highly dependable, with all the features you could need at a price point that's simply hard to beat!



You could pay a lot more for a similar system, but would you really get something better ?

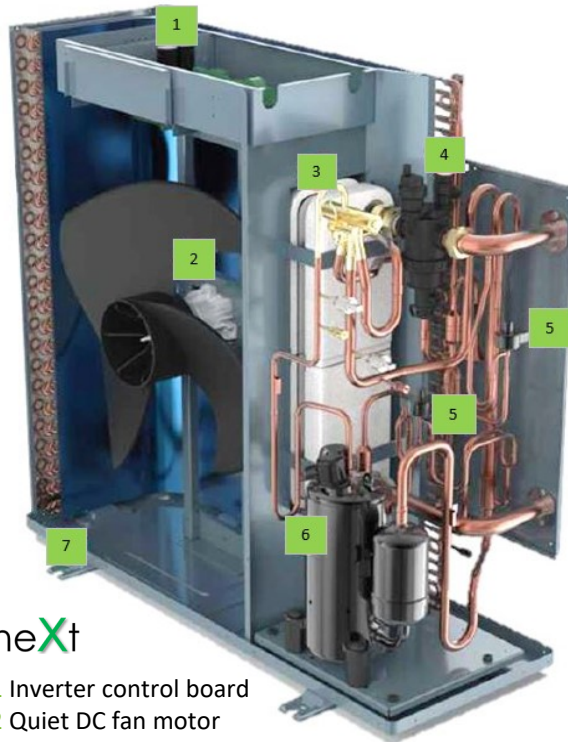
**Genuinely, We Doubt it !**



### Hydro-Hub

- 1 18L Buffer tank
- 2 3Kw Back up heater
- 3 8L expansion vessel
- 4 Three way valve
- 5 Primary circuit pump
- 6 System pump

For clarity, wiring and insulation are not shown in the open box images



### neXt

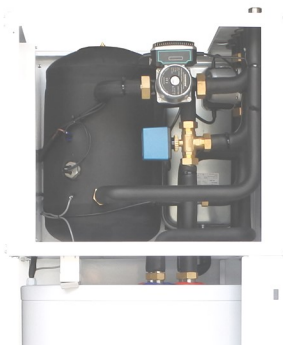
- 1 Inverter control board
- 2 Quiet DC fan motor
- 3 Plate heat exchanger
- 4 Magnetic filter Dirt trap and AAV
- 5 Heating and cooling EEVs
- 6 Dual rotary compressor
- 7 Integrated condensate tray with tray de icing heater

**5 YEAR  
Warranty**



### Hydro-Tower

- 1 8L Expansion vessel
- 2 6L Buffer tank
- 3 3Kw Back up heater
- 4 Primary circuit pump
- 5 System pump
- 6 Three way valve
- 7 200L Duplex cylinder



The exposed drawings above exclude insulation and wiring for clarity.

< Actual of Tower Head

## Heating Installers...

We continue to grow our business, why not get onboard & let us help grow yours !  
Interested in becoming a heat IQ recommended installer? Lets talk.

## Short list : Overview of specifications and performance.

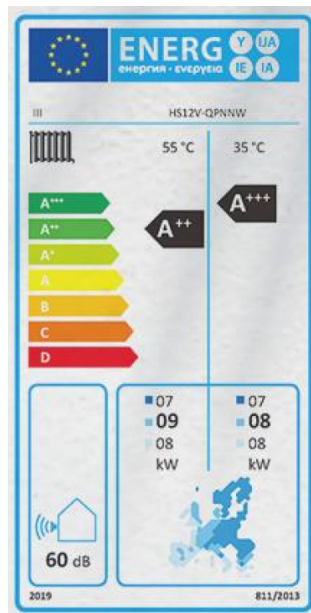
Model Ref		HS12V-Q	HS15V-Q
Power supply		230V 50Hz	230V 50Hz
Max current rating		18A	32A
<b>Heat output range at A7/W35</b>		<b>3.8—12.2</b>	<b>4.95—15.2</b>
Heat Output at Air 7/Water 35 (Median)	Kw	9.87	12.6
Power consumption A7/W35	Kw	2.06	2.50
Performance coefficient A7/W35	COP	4.79	4.90
<b>Heat output range at A7/W55</b>	Kw	<b>3.48—11.1</b>	<b>4.65—14.3</b>
Heat Output at A7/W55 (Median)	Kw	8.2	11.6
Power consumption A7/W55	Kw	2.58	3.39
Performance coefficient A7/W55	COP	3.41	3.45
<b>Cooling Output Air 35/ Water 7</b>	Kw	<b>7.8</b>	<b>10.8</b>
Power consumption A35 / W7	Kw	2.8	4.5
EER @ A35/ W7	EER	2.79	2.29
*Max 75° possible output - Real world efficiency 70° max recommended			
Refrigerant/Weight		R290 /0.8Kg	R290 /1.15Kg
ERP Efficiency rating for EU @35°		<b>A+++</b>	<b>A+++</b>
ERP Efficiency rating for EU @55°		<b>A++</b>	<b>A++</b>
Dimensions	mm	1014x1060x420	1370x160x420
Weight	Kg	108	132
Sound level	DB(A)	58	58
<b>HYDRO HUB</b>			
<b>Includes primary and system pumps + 3 way valve</b>			
Dimensions		450x390x900	
Weight NW		43KG	
Connections		25mm 1" BSP	
Buffer volume		18L	
Pressure vessel		8L	
<b>Incorporates 6" touch screen interface with WIFI</b>			
<b>HYDRO TOWER</b>			
<b>Includes primary &amp; system pumps DHW cylinder &amp; 3 way vail</b>			
Dimensions		665x665x1878	
Weight NW		163Kg	
Connections		25mm 1" BSP	
Duplex cylinder capacity / max pressure		200L/6.5Bar	
Buffer volume		26L	
Pressure vessel		8L	
<b>Incorporates 6" touch screen interface with WIFI</b>			

# next

Heat IQ

Distributed by  
Tradepoint Ltd Heat IQ  
11 Rakau Road, Whanganui  
New Zealand

**5 YEAR**  
**Warranty**



Tuya Smart



EU CE Certified product  
Keymark Certified  
Smart grid ready  
Data tested to EN14511

[www.heatiq.co.nz](http://www.heatiq.co.nz)

Supplied and Installed by