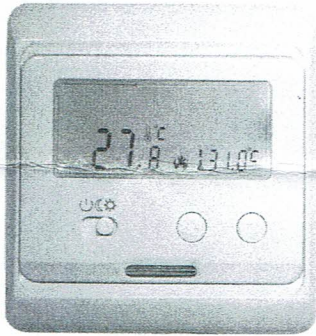
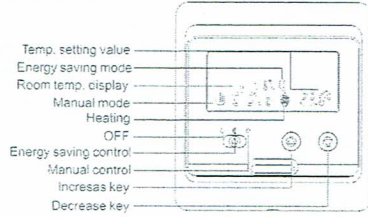


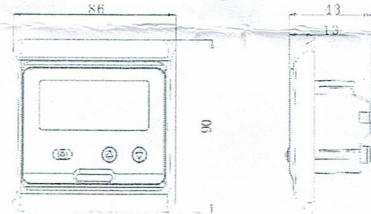
STH139 Thermostat Instructions



Display symbols



Dimensions(mm)



User Operation

- 1) On/off and Mode choosing.
Slide the power switch to "☾" for energy saving mode, to "☀" for manual mode, to "⏻" for off.
- 2) Modify the temperature value
Press "▲" or "▼" key to adjust the value of set temperature by increasing or decreasing 0.5°C each time.
- 3) It displays the measured temperature on the left side and set temperature on the right.

Advanced setting (qualified person preferred)

Press "▲" key and slide the power on button to "☾" when in power off state. The following 9 functions can be chosen by sliding between "☀" and "☾".

Symbol	Setting	▲ or ▼
1	ADJ Temperature calibration	Adjustable scale. $\pm 0.5^{\circ}\text{C}$
2	SEN Sensor mode	IN: built-in sensor OUT: floor sensor ALL: both sensor
3	LIT Limitation temperature	Adjust limitation value, limitation range: 5-60°C.
4	DIF Switching differential	Adjust switching differential
5	LTP Anti-frozen function	Turn on/off Anti-frozen function
6	RLE Potential-free output and main power output in the same/different way	Change the present linkage way
7	DLY Delay time of potential-free output	Change linkage delay time, range: 0-5min.
8	HIT Max temperature	Max. temperature setting Range: 35-95°C
9	AFAC Reset to factory setting	Press "▲" key and hold for 5s then all parameters will be reset.

Sensor failure

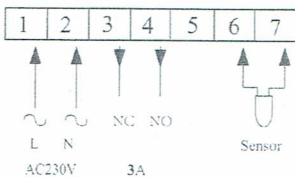
Please select the right sensor mode when operation, it will display "Er" symbol for sensor failure.

Er0: Built-in sensor short-circuited or disconnected

Er1: External sensor short-circuited or disconnected

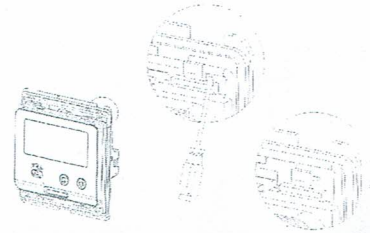
When shows E0/E1, thermostat must be checked till fault is eliminated.

Wiring Diagram

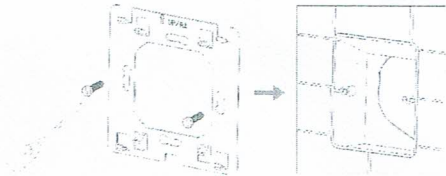


Mounting steps

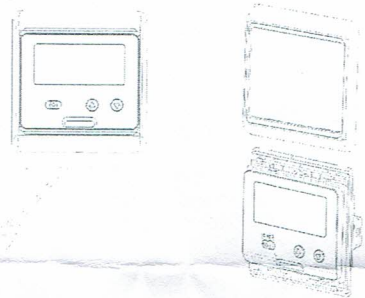
1. Release the front cover by inserting a screwdriver into bottom crack.



2. Take the back plate apart according to following diagram.



3. Install the thermostat in electrical connection box with screws.



4. Install the housing cover and lock the external frame.

