



SYSTEM OVERVIEW



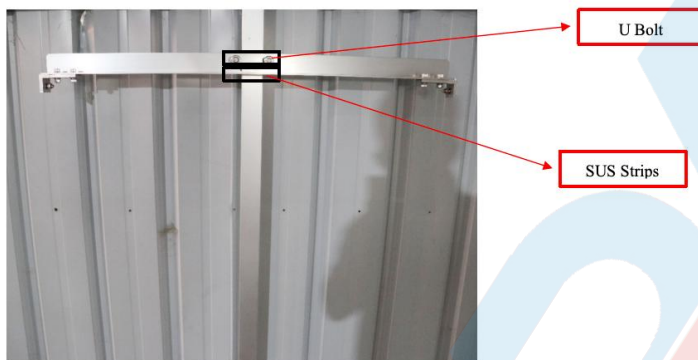
COMPONENT LIST

End clamp		Rail 4010	
L Foot		Angle Aluminum	
Adjustable support		U Bolt	
SUS Strips			

Step 1: Install angle aluminum

Determine the position of the long and short angle aluminum according to the drawing, then put the U-bolt into the long hole at the upper end of the angle aluminum on the outer diameter of the column, lock the nut and flat spring washer to fix it. Then put the stainless steel strips into the round hole at the lower end of the angle aluminum and tie it to the column.

* Do not lock it first, install the Adjustable support, adjust it and then lock it, which is convenient for installation

**Step2: Install L feet**

Use M8*25 bolt to fix L feet on both sides.



Step3: Install Rail 4010

Fixed two rails 4010 by assembly L feet , and fixed to Angle aluminum.

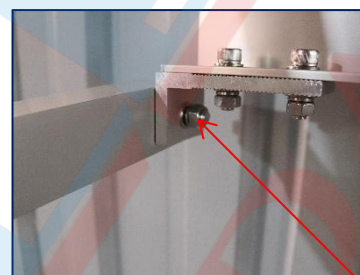
*Do not lock it first, install the Adjustable support and adjust it and then lock it, which is easy to install.



T-M8*25

Step4: Install and adjust the Adjustable support

Use bolt fixed the **Adjustable support** to L Feet, then adjust the inner tube of **Adjustable support** fixed to Rail 4010. Adjust the **Adjustable support** and L feet on the same level.



M8*60



T-M8*50

Adjust the **Adjustable support** and Rail 4010, and lock them.

Step5: Install solar panel

Put the solar panel on rail, use end clamp fixed the panel on rails.



End clamp

Step6:Installation finished.

Attention: Check all bolt and nut lock perfectly.

