



POP-ON TECHNOLOGY LETS YOU HEAR WHEN IT IS RIGHT

SMR Pitched Roof System

SunModo introduces the SMR Pitched Roof System, the best value pitched roof mounting system on the market.

With fast and easy Pop-On Clamps and L-Foot Adaptors, professional installers can mount, adjust, and secure PV panels with a single tool.

Whether rafter or deck, portrait or landscape, the SMR System is the ideal solution for your solar installation. Save money on materials and installation time.

The SMR System Advantage

- ✓ The best value, best performing rail system on the market
- ✓ Lag-to-Panel single tool installation
- ✓ Pop-On universal clamps make installation fast, reliable and flexible
- ✓ A full range of roof attachments to meet every need
- ✓ Fastest install and lowest cost

The SMR System represents a huge leap in racking technology. Optimized design makes the SMR Rails not only the lightest but also the strongest rails on the market. One tool assembly and Pop-On technology allow fast and worry-free installation. The cost and performance cannot be beaten.



SMR100 Rail



SMR200 Rail

Clamps & Grounding



Mid Clamp

The Bonding Pop-On Universal Mid Clamps accommodate PV module frame heights ranging from 30mm to 50mm. The fastest installing Mid Clamps on the market.



L Foot Adaptor

Fast and easy Pop-On L-Foot Adaptor speeds installation and eliminates old-fashioned T-Bolts. Install fast with full confidence in every attachment.



End Clamp

Universal height accommodates 30mm to 50mm module frame thicknesses. Pop-On Clamp provides fast and easy install with a single SKU for any install.



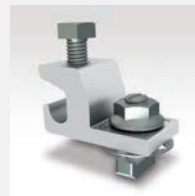
Rail Splice

Fully structural bonding splice with fast and easy single bolt installation



Shared Rail Mid/End Clamp

Easily adapt racking to Shared Rail install. Uses the same Pop-On technology as standard clamps to provide fast and easy install.



Grounding Lug

The Lug provides proper grounding of the PV System

Technical Data

| | |
|-----------------------------|--|
| Application | Pitched Roof |
| Roof Type | Composition shingle, Metal and Tile |
| Material | High grade aluminum and 304 stainless steel hardware |
| PV Modules | Compatible with all common module types |
| Module Orientation | Portrait and landscape |
| Roof Attachment | Rafter and decking |
| Structural Integrity | IBC compliant, stamped engineering letters available |
| Certificate | UL 2703 listed by ETL |
| Warranty | 25 years |