

2022
DASH COMPUTERS

DEFINING YOUR RIDE



GIANT



GIANT DASH L200 & M200 CYCLING COMPUTERS

DEMYSTIFY YOUR RIDE

Giant's all-new Dash cycling computers unlock the secrets of becoming KOM, QOM or maybe just the local legend by allowing you to connect, customize, train and explore more easily than ever before. Powered by Stages, the easy-to-use Giant Dash L200 and M200 are the practical, precise and powerful way to demystify all your ride data.

DASH L200 & M200

AMBIENT LIGHT SENSOR

Built-in sensor automatically brightens or dims to optimize visibility and runtime in variable light.

STAGES EVERBRITE™ COLOR

OPTICALLY CLEAR ADHESIVE SCREEN



5 BUTTON CONTROL

An intuitive UI flow allows for simple 5-button control, even when wearing long finger gloves.

IP57 WATER & DUST RESISTENT

IP57-certified water and dust resistant and capable of withstanding light to moderate rain.



EXTRA-LONG BATTERY LIFE

18+ hours with reduced power mode enabled. 10 hours at max operation (Displaying maps with 1 sensor connected, with 100% backlight).

STABLE AND SECURE QUARTER TURN MOUNT

Widely compatible with most common mounting brackets.

Accurate Satellite Network - Fast connection with GPS and QZSS with SBAS (WAAS, EGNOS, MSAS, and GAGAN).

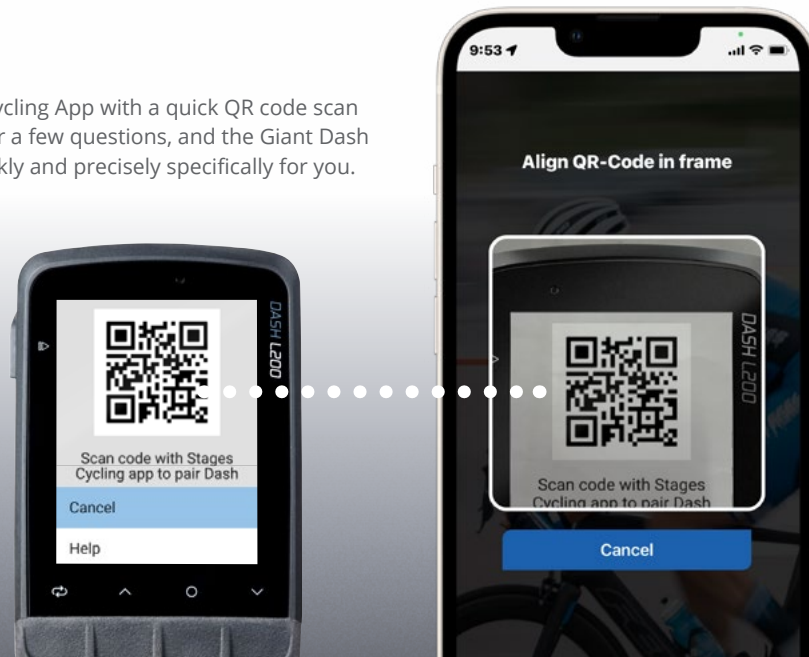
Built-in Barometer - Accurately detects real time altitude data by cross-checking with GPS.

Built-in Thermometer - Records real time temperature change when moving from peaks to valleys.

NO MYSTERY

1 EASY START

Download the Stages Cycling App with a quick QR code scan from the screen, answer a few questions, and the Giant Dash will configure itself quickly and precisely specifically for you.



2

READY WHEN YOU ARE

Smart Profile takes the mystery out of setting up your computer for your road, gravel, mountain or E-bike by automatically connecting to whichever sensors you have on board and configuring the data fields of your Dash for that specific experience. Need to add more information to what's already there? No problem, just add your own custom panels or pages where you like.



3

100% SYNCHED

Connect your phone to the Dash and never miss an important message or call. When you finish your ride you'll find all your ride data instantly uploaded via the Stages Cycling app to your favorite 3rd party apps such as Strava or TrainingPeaks.



4

FULLY CUSTOMIZABLE

Using the Stages Cycling app you can quickly and easily tailor every screen and data field of the Dash to meet your needs.





COMPLETELY CONNECTED

TOTAL INTEGRATION

Quickly and easily paired with any ANT+ or Bluetooth enabled devices such as power meters, smart trainers or smart lights, the Dash integrates all your controls into one via an easy-to-use multi-functional panel.



POWER METERS



SPEED & CADENCE



RADARS



SMART LIGHTS



TRAINERS



HEART RATE



GIANT E-BIKE CONNECTED

Designed to connect seamlessly to Giant E-bikes via ANT+, the Dash can be used as a display to show motor mode, power assist output and battery life.



READY TO TRAIN

SMART TRAINER INTELLIGENT

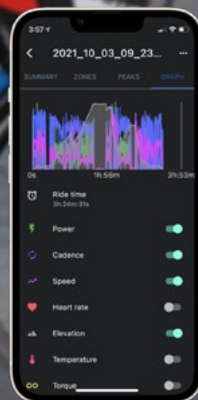
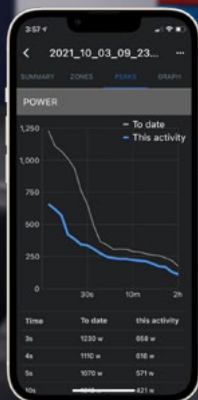
Clear up any smart trainer confusion by automatically connecting the Dash to any ANT+ enabled trainer and easily control resistance in various modes such as ERG, Level or Sim.

TRAINING PLAN & WORKOUT READY

Download any pre-planned workout in .FIT or .GPX files or create your own workout via the Stages Link app, sync it to your Dash and you're ready to start training right away.

DECODE THE DATA

Demystify your performance data page by having it graphed in various ways for any given time period and review your performance based on the metrics that matter most to you.

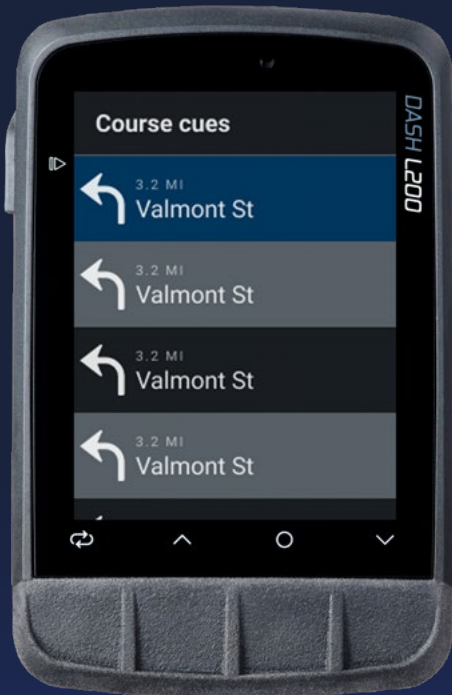




MAPPED-OUT

X MARKS THE SPOT

The Dash makes sure you'll never get lost or caught short with a pre-installed cycling-specific Open Street Map featuring color-coded roads, bike lanes, bike paths, trails and icons for key points of interest like bathrooms, bike shops, cafes and pubs all over the world.



FIND YOUR WAY

With 16GB of storage, the Dash is compatible for turn-by-turn navigation with .FIT, .GXP and .TCX files. When riding a course you'll get a scrollable cue sheet, know where to go on routes that overlap, get a color-coded gradient profile and obtain your current position for the day's climbs.

GIANT DASH L200 & M200 CYCLING COMPUTERS

The larger Dash L200 and the smaller Dash M200 cycling computers unlock the secrets of becoming KOM, QOM or maybe just the local legend by allowing you connect, customize, train and explore more easily than ever before. Powered by Stages, and enhanced via the Stages Link app, the easy-to-use Dash L200 and M200 are the practical, precise and powerful way to demystify all your ride data.



KEY FEATURES

GIANT DASH L200 & M200

- Larger 2.7" screen on L200 and compact 2.2" screen on the M200
- Stages Everbrite™ screen provides vivid colors and crisp detail
- Built-in ambient light sensor automatically brightens or dims to optimize visibility and runtime in variable light
- Intuitive five button control is easy to use even when wearing long finger gloves
- IP57 water and dust resistant
- Fast connection with GPS
- Built-in barometer accurately provides real time data by cross-checking with GPS
- Built-in thermometer displays real time temperature change when moving from peaks to valleys
- 18+ hours with reduced power mode enabled. 10 hours at max operation (Displaying maps with 1 sensor connected, with 100% backlight)
- Stable and secure quarter turn mount

GIANT DASH L200 & M200 CYCLING COMPUTERS



Model Name	Giant Dash L200	Giant Dash M200
Hardware Spec		
Size (LxWxH mm)	94mm x 60mm x 22mm	81mm x 51mm x 22mm
Weight (gram)	105g	77g
Waterproof Rating (IPX)	IP57	IP57
Shock Proof	*	*
Control	5 buttons	5 buttons
Display	EverBrite™ OCA screen	EverBrite™ OCA screen
Display Size	2.7"	2.2"
Display Resolution	240x320	240x320
Battery Type	USB lithium-ion (2300mAh)	USB lithium-ion (1600mAh)
Battery Run Time	18+ hours with reduced power mode enabled 10 hours at max operation (Displaying maps with 1 sensor connected, with 100% backlight)	18+ hours with reduced power mode enabled 10 hours at max operation (Displaying maps with 1 sensor connected, with 100% backlight)
Battery Charge Time	>3.5h, up to 24 hours of use	>2.5h, up to 24 hours of use
Included Mount	Dash L Computer Mount	Dash M Computer Mount
Sensor		
Satellite Network	GPS and QZSS with SBAS (WAAS, EGNOS, MSAS, and GAGAN)	GPS and QZSS with SBAS (WAAS, EGNOS, MSAS, and GAGAN)
Barometric Altimeter	*	*
Accelerometer	*	*
Thermometer	*	*
Ambient Light Sensor	*	*
Display & Alerts		
Display View	Portrait/Landscape	Portrait/Landscape
Audio Alert	*	*
Screenshot	*	*
Connectivity		
Wireless Connection	Bluetooth® ANT+® WiFi®	Bluetooth® ANT+® WiFi®
Smart Phone Compatibility	iPhone® Android™	iPhone® Android™
Smart Notification	*	*
Giant E-Bike System	*	*
Giant E-Bike Lights	*	*
Garmin Varia Radar Remote	*	*
Smart Trainer Control (ANT FE-C)	*	*
Power Meter	*	*
Speed & Cadence Sensor	*	*
Heart Rate Monitor	*	*
App		
Stages Cycling App	Device set up Firmware update	Device set up Firmware update
Maps & Navigation		
OSM MAP	Downloadable high-resolution world maps	Downloadable high-resolution world maps
Turn-By-turn Navigation	*	*
Zoom & Pan	*	*
Add Maps	*	*
Memory	16GB	16GB
Compatible course/track File Formats	.GXP .FIT and .TCX	.GXP .FIT and .TCX
App Compatibility	StagesLink / Strava / Komoot / TodaysPlan Relive / RideWithGPS	StagesLink / Strava / Komoot / TodaysPlan Relive / RideWithGPS
Training, Planning and Analysis		
Customizable Data Page	*	*
Automatic Adaptive Zone	*	*
Live Graphic Tracks	Power	Power
	Elevation	Elevation
	Speed	Speed
	Cadence	Cadence
	Heart Rate	Heart Rate
Colored Coded Notice	E-bike Mode	E-bike Mode
	Power	Power
	Heart Zone	Heart Zone
Ride History	Lifetime storage	Lifetime storage
Add Workout Graphic File	.FIT	.FIT
App Compatibility	StagesLink	StagesLink
	TrainingPeaks	TrainingPeaks
	TrainerRoad	TrainerRoad

GIANT DASH L200 & M200 MOUNTS

						
Model Name	Dash M Computer Mount	Dash L Computer Mount	Universal Stem Computer Mount	Propel Stem Computer Mount	Contact SLR Integrated Handlebar Computer Mount	Over-The-Bar Computer Mount
Material	Engineering Grade Polymer	Engineering Grade Polymer	Carbon Injection Composite	Engineering Grade Polymer	Aluminum	Aluminum
Mounting Configuration	Round Tube Handlebar (Ø31.8mm)	Round Tube Handlebar (Ø31.8mm)	Stem Faceplate (Stem range 23mm-30mm)	Giant Contact SL Aero Stem / Giant Contact SL Stealth Stem	Giant Contact SLR Integrated Handlebar	Round Tube Handlebar (Ø31.8mm, Ø35mm)



0027 HSVD



GRADIENT
0.2%

TOT DESCENT
140

TOT ASCENT
154

RD ELEVATION
134

GIANT