

GRIPPS®

GRIPPS Technical Specification Sheet:

GRIPPS® Hammer Connector Pack 2.kg | 5.5lbs
Models: H07000



H07000
Hammer Connector Pack 2.kg | 5.5lbs
Max Load: 2.5kg | 5.5lbs
Max Tether Length: 1.3m | 51"
ANSI/ISEA 121-2018 COMPLIANT

FOR PRODUCT SUPPORT CONTACT:

support@gripps.com | +61 3 8383 9458

WWW.GRIPPS.COM

GRIPPS® Hammer Connector Pack 2.kg | 5.5lbs

SAFETY INFORMATION

⚠️ WARNING Before using the GRIPPS® Hammer Connector Pack, read all provided safety information pertaining to the use of your Dropped Tool Prevention (DTP) device. **FAILURE TO DO SO COULD RESULT IN INJURY OR DEATH.**

The user of a DTP device bears the responsibility of reading all safety information contained herein. Keep this manual for future reference.

Intended Use:

When used properly, the GRIPPS® Hammer Connector Pack can prevent workplace hazards resulting from dropped tools. These may include personal injury and material damage.

GRIPPS® does not approve use of this device for any activities not described in the User Instructions. This device is not intended to be used in any recreational activity, as a personal fall-arrest device or in any other manner not described herein.

⚠️ WARNING Misuse of this device could result in serious injury or death.

Adhere to all manufacturer recommendations regarding the operation and maintenance of this device. For additional information, contact GRIPPS® customer support.

Read and adhere to the following in order to ensure correct operational functionality:

- Your DTP should never be used as a personal fall-arrest device or restraint system.
- Do not use this device with tools that exceed the specified maximum load/weight.
- A DTP device used in applications that exceed the limits of operation specified by the manufacturer should be considered unsafe and should be replaced.
- Do not tether a tool over 2.5kg/5.5lbs directly to your clothing or person.
- Inspect your DTP device before each use.
- Ensure the DTP device is securely connected to a load rated tool connector or anchor point before use.
- Inspect any tool connector point before it is connected to the DTP device.
- Modification of the DTP device voids all warranties and violates manufacturer recommendations.
- Do not use a tool that cannot be connected to your DTP in the manner specified by GRIPPS®.
- It is unsafe to extend the length of the DTP product by any means.
- Do not use this product if it will create an unsafe working environment.
- Use extra precaution around moving machinery, moving parts, electrical hazards, extreme temperatures, chemical hazards, or combustion hazards.
- Avoid contact between any connected tethers and rough or sharp edges.
- All connected tools and equipment, including connection points, must be compatible for use with this DTP device.
- Always wear appropriate personal protective equipment.

- If a tether has arrested a dropped tool or object, it should be taken out of service and replaced.
- All procedures shown in this instruction are for GRIPPS® Tool Catch & V-Gripp Tape products only.

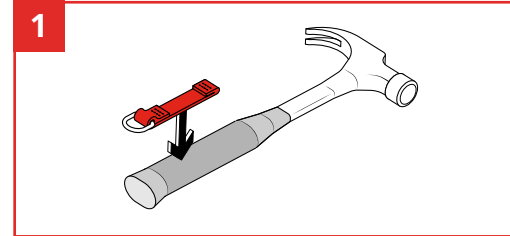
GENERAL USE AND CARE

Equip your tool belt with the necessary connectors for adding any hammer with the Hammer Connector Pack. Including innovative self-vulcanizing GRIPPS® V Gripp Tape, (which is resistant to heat, water, and oil), a GRIPPS® Tool Catch and GRIPPS® Shrink, no hammer poses a challenge.

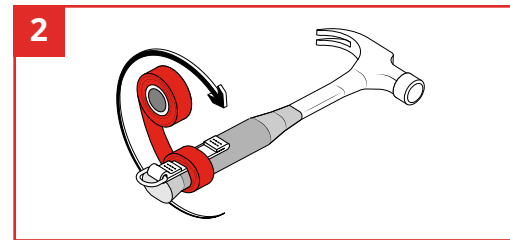
Before Use:

Thoroughly inspect your GRIPPS® DTP device before each use. Do not use any component that presents deformities or deterioration. Before use: Thoroughly clean tool of any soiling and grease prior to application

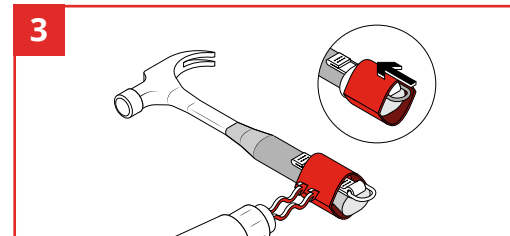
HOW TO USE / INSTRUCTIONS:



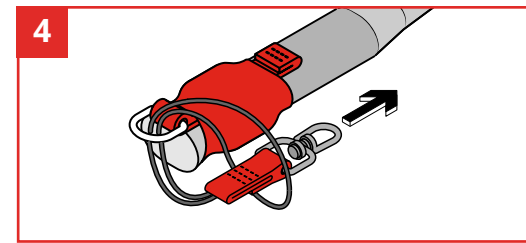
Place Tool Catch towards the base of hammer handle.



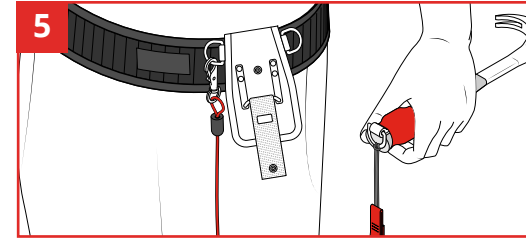
Wrap the tape around the tool while stretching the tape to activate the self-vulcanizing feature, creating a secure connection. Ensure raised 'catch' is not covered by the tape. Pull on Tool Catch with force to test application.



Slide Gripp Shrink over Tool Catch and V-Gripp Tape. Then apply heat gun.



Apply Swivel Catch by choking through the D-Ring in the Tool Catch.



Your hammer is now ready to be applied to a GRIPPS® tether. Always consider the max load of your tool holster, in conjunction to weight of the hammer.

After Use Care:

Clean and inspect the Hammer Connector Pack and any connected tethers. For tougher stains, use warm water and a mild soap or detergent. Do not use again until dry.

Store in a clean and dry environment. Proper care will help to ensure that it will operate effectively and extend its service.

GRIPPS®



linkedin.com/company/grippsglobal



youtube.com/@gripps3480grippsglobal



facebook.com/grippsglobal



instagram.com/grippsglobal