

GRIPPS®

GRIPPS® Technical Specification Sheet.

GRIPPS® Claw Hammer Holster
Model: H02062



H02062
Claw Hammer Holster
Max Load: 2.5kg / 5.5lbs
ANSI/ISEA 121-2018 COMPLIANT

FOR PRODUCT SUPPORT CONTACT:

support@gripps.com | +61 3 8383 9458

WWW.GRIPPS.COM

GRIPPS® Claw Hammer Holster

SAFETY INFORMATION

⚠️ WARNING Before using the GRIPPS® Claw Hammer Holster, read all provided safety information pertaining to the use of your Dropped Tool Prevention (DTP) device. **FAILURE TO DO SO COULD RESULT IN INJURY OR DEATH.**

The user of a DTP device bears the responsibility of reading all safety information contained herein. Keep this manual for future reference.

Intended Use:

When used properly, the GRIPPS® Claw Hammer Holster can prevent workplace hazards resulting from dropped tools. These may include personal injury and material damage.

GRIPPS® does not approve use of this device for any activities not described in the User Instructions. This device is not intended to be used in any recreational activity, as a personal fall-arrest device or in any other manner not described herein.

⚠️ WARNING Misuse of this device could result in serious injury or death.

Adhere to all manufacturer recommendations regarding the operation and maintenance of this device. For additional information, contact GRIPPS® customer support.

Read and adhere to the following in order to ensure correct operational functionality:

- Your DTP should never be used as a personal fall-arrest device or restraint system.
- Do not use this device with tools that exceed the specified maximum load/weight.
- A DTP device used in applications that exceed the limits of operation specified by the manufacturer should be considered unsafe and should be replaced.
- Do not tether a tool over 2.5kg/5.5lbs directly to your clothing or person.
- Inspect your DTP device before each use.
- Ensure the DTP device is securely connected to a load rated tool connector or anchor point before use.
- Inspect any tool connector point before it is connected to the DTP device.
- Modification of the DTP device voids all warranties and violates manufacturer recommendations.
- Do not use a tool that cannot be connected to your DTP in the manner specified by GRIPPS®.
- It is unsafe to extend the length of the DTP product by any means.
- Do not use this product if it will create an unsafe working environment.
- Use extra precaution around moving machinery, moving parts, electrical hazards, extreme temperatures, chemical hazards, or combustion hazards.
- Avoid contact between any connected tethers and rough or sharp edges.
- Regularly inspect any GRIPPS products to ensure they are free from any dust, grime or debris.
- All connected tools and equipment, including connection points, must be compatible for use with this DTP device.

- Always wear appropriate personal protective equipment.
- If a tether has arrested a dropped tool or object, it should be taken out of service and replaced.
- All procedures shown in this instruction are for GRIPPS® Phone/Tablet Gripper products only.

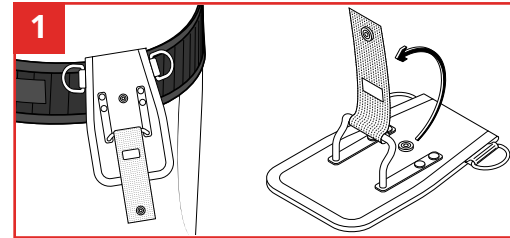
GENERAL USE AND CARE

Compatible with all standard work belts, the Claw Hammer Holster keeps your hammer secure and easily accessible. A high-quality Nylon strap secures the hammer with a snap-lock button. Two load-rated D-Rings allow you to tether your tool to the holster keeping it secure against drops.

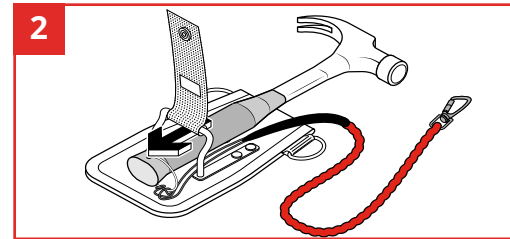
Before Use:

Thoroughly inspect your GRIPPS® DTP device before each use. Do not use any component that presents deformities or deterioration. Inspect all material including the carabiner and tether.

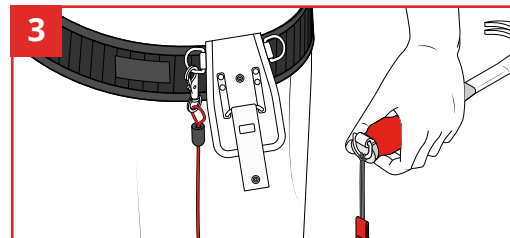
HOW TO USE / INSTRUCTIONS:



To connect to a work belt, thread work belt through the loop on back of holster. Open holster by unclipping button.



Connect your preferred GRIPPS® tether to your hammer then insert hammer into holster.



Connect opposite end of your tether to one of the two upper D-Rings.

After Use Care:

Clean and inspect the Claw Hammer Holster, tethers and connected tool. For tougher stains, use warm water and a mild soap or detergent. Do not use again until dry.

Store in a clean and dry environment. Proper care will help to ensure that it will operate effectively and extend its service.

GRIPPS®



linkedin.com/company/grippsglobal



facebook.com/grippsglobal



youtube.com/@gripps3480grippsglobal



instagram.com/grippsglobal