

GRIPPS®

GRIPPS® Technical Specification Sheet.

GRIPPS® Tool Holster

Models: H02047, H02049, H02090, H02091



H02047
Scaffold Key Holster
Max Load (D-Ring):
2.5kg / 5.5lbs
ANSI/ISEA 121-2018
COMPLIANT

H02049
Retractable Scaffold Key Holster
Max Load (D-Ring):
2.5kg / 5.5lbs
Max Load (Retractor):
0.7kg / 1.5lbs
ANSI/ISEA 121-2018
COMPLIANT



H02090
Ratchet/Wrench Holster MKII
Max Load (D-Ring):
2.5kg / 5.5lbs
ANSI/ISEA 121-2018
COMPLIANT

H02091
Retractable Ratchet/Wrench Holster MKII
Max Load (D-Ring):
2.5kg / 5.5lbs
Max Load (Retractor):
0.7kg / 1.5lbs
ANSI/ISEA 121-2018
COMPLIANT

FOR PRODUCT SUPPORT CONTACT:

support@gripps.com | +61 3 8383 9458

WWW.GRIPPS.COM

GRIPPS® Tool Holster

SAFETY INFORMATION

⚠️ WARNING Before using the GRIPPS® Tool Holsters, read all provided safety information pertaining to the use of your Dropped Tool Prevention (DTP) device. **FAILURE TO DO SO COULD RESULT IN INJURY OR DEATH.**

The user of a DTP device bears the responsibility of reading all safety information contained herein. Keep this manual for future reference.

Intended Use:

When used properly, GRIPPS® Tool Holsters can prevent workplace hazards resulting from dropped tools. These may include personal injury and material damage.

GRIPPS® does not approve use of this device for any activities not described in the User Instructions. This device is not intended to be used in any recreational activity, as a personal fall-arrest device or in any other manner not described herein.

⚠️ WARNING Misuse of this device could result in serious injury or death.

Adhere to all manufacturer recommendations regarding the operation and maintenance of this device. For additional information, contact GRIPPS® customer support.

Read and adhere to the following in order to ensure correct operational functionality:

- Your DTP should never be used as a personal fall-arrest device or restraint system.
- Do not use this device with tools that exceed the specified maximum load/weight.
- A DTP device used in applications that exceed the limits of operation specified by the manufacturer should be considered unsafe and should be replaced.
- Do not tether a tool over 2.5kg/5.5lbs directly to your clothing or person.
- Inspect your DTP device before each use.
- Ensure the DTP device is securely connected to a load rated tool connector or anchor point before use.
- Inspect any tool connector point before it is connected to the DTP device.
- Modification of the DTP device voids all warranties and violates manufacturer recommendations.
- Do not use a tool that cannot be connected to your DTP in the manner specified by GRIPPS®.
- It is unsafe to extend the length of the DTP product by any means.
- Do not use this product if it will create an unsafe working environment.
- Ensure the tether does not become entangled with other workers, yourself or surrounding objects. Leave enough space between yourself and any hazards so that a tool on a fully extended tether can swing unobstructed should it fall.
- Avoid contact between the tether and rough or sharp edges.
- Use extra precaution around moving machinery, moving parts, electrical hazards, extreme temperatures, chemical hazards, or combustion hazards.
- All connected tools and equipment, including connection points,

- must be compatible for use with this DTP device.
- Always wear appropriate personal protective equipment.
- If a tether has arrested a dropped tool or object, it should be taken out of service and replaced.
- All procedures shown in this instruction are for GRIPPS® Tool Holster products only.

GENERAL USE AND CARE

GRIPPS® Tool Holsters are designed to keep your tools secure and accessible in a lightweight and industrial-grade design. Straps secure the tool within the holster, and integrated d-rings allow for tethering to the holster itself. GRIPPS® Tool Holsters come in retractable and non-retractable variations.

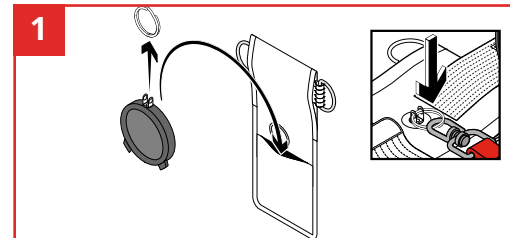
Recommended Use of GRIPPS® Tool Holsters:

1. Use the appropriate tool holster for each specific tool.
2. When tethering to integrated D-Rings, use with tools that weigh up to 2.5kg/5.0lbs.
3. Velcro straps have a secondary Velcro patch that allow the strap to be secured open while tool is in regular use.
4. Ensure tools are tethered to the D-Rings or another load rated Tether Anchor point at all times while holstered.
5. All Tool Holsters are compatible with standard 50mm/2.0" work belts, and the GRIPPS® Mule Bag.
6. Only use with GRIPPS® tool tethers.

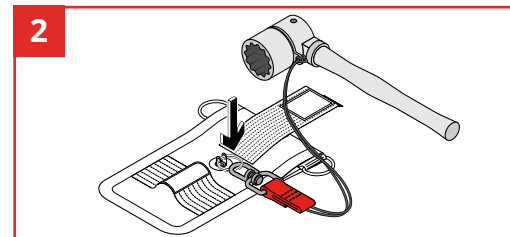
Before Use:

Thoroughly inspect your GRIPPS® DTP device before each use. Do not use any component that presents deformities or deterioration. Inspect all material including the carabiner and tether.

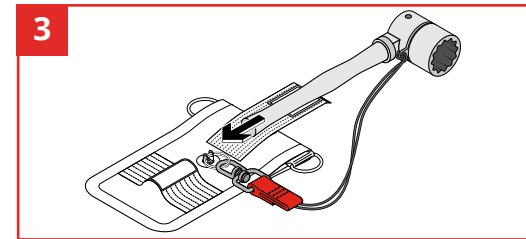
HOW TO USE / INSTRUCTIONS:



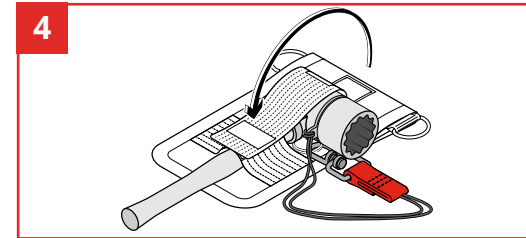
Remove tool ring from Retractor unit then insert into back pouch of holster. Reattach tool ring, keeping the ring exposed outside holster. Note some models require the ring fed through the center of holster + others via the side.



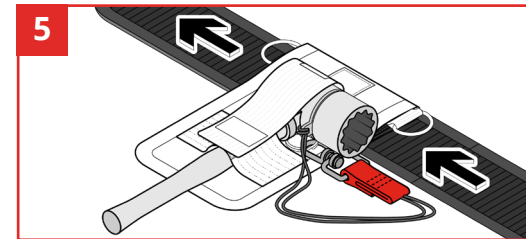
Connect tool to the Retractor or side D-Rings.



Slide tool into holster with connection point applied to tool.



Close front strap.



Apply holster to your work belt, by sliding belt through the slip located on the upper end of holster.

After Use Care:

Clean and inspect the Tool Holster, tethers and connected tool. For tougher stains, use warm water and a mild soap or detergent. Do not use again until dry.

Store in a clean and dry environment. Proper care will help to ensure that it will operate effectively and extend its service.

GRIPPS®

linkedin.com/company/grippsglobal

facebook.com/grippsglobal

youtube.com/@gripps3480grippsglobal

instagram.com/grippsglobal