

GRIPPS®

GRIPPS® Technical Specification Sheet.

GRIPPS® BOA Holster
Model: H02031



H02031
BOA Holster
Max Load: 5.0kg / 11lbs
ANSI/ISEA 121-2018 COMPLIANT

FOR PRODUCT SUPPORT CONTACT:

support@gripps.com | +61 3 8383 9458

WWW.GRIPPS.COM

GRIPPS® BOA Holster

SAFETY INFORMATION

⚠️ WARNING Before using the GRIPPS® BOA Holster, read all provided safety information pertaining to the use of your Dropped Tool Prevention (DTP) device. **FAILURE TO DO SO COULD RESULT IN INJURY OR DEATH.**

The user of a DTP device bears the responsibility of reading all safety information contained herein. Keep this manual for future reference.

Intended Use:

When used properly, the GRIPPS® BOA Holster can prevent workplace hazards resulting from dropped tools. These may include personal injury and material damage.

GRIPPS® does not approve use of this device for any activities not described in the User Instructions. This device is not intended to be used in any recreational activity, as a personal fall-arrest device or in any other manner not described herein.

⚠️ WARNING Misuse of this device could result in serious injury or death.

Adhere to all manufacturer recommendations regarding the operation and maintenance of this device. For additional information, contact GRIPPS® customer support.

Read and adhere to the following in order to ensure correct operational functionality:

- Your DTP should never be used as a personal fall-arrest device or restraint system.
- Do not use this device with tools that exceed the specified maximum load/weight.
- A DTP device used in applications that exceed the limits of operation specified by the manufacturer should be considered unsafe and should be replaced.
- Do not tether a tool over 2.5kg/5.5lbs directly to your clothing or person.
- Inspect your DTP device before each use.
- Ensure the DTP device is securely connected to a load rated tool connector or anchor point before use.
- Inspect any tool connector point before it is connected to the DTP device.
- Modification of the DTP device voids all warranties and violates manufacturer recommendations.
- Do not use a tool that cannot be connected to your DTP in the manner specified by GRIPPS®.
- It is unsafe to extend the length of the DTP product by any means.
- Do not use this product if it will create an unsafe working environment.
- Use extra precaution around moving machinery, moving parts, electrical hazards, extreme temperatures, chemical hazards, or combustion hazards.
- Avoid contact between any connected tethers and rough or sharp edges.
- Regularly inspect any GRIPPS® products in use to ensure they are free from any dust, grime or debris.
- All connected tools and equipment, including connection points, must be compatible for use with this DTP device.

- Always wear appropriate personal protective equipment.
- If a tether has arrested a dropped tool or object, it should be taken out of service and replaced.
- All procedures shown in this instruction are for GRIPPS® Phone/ Tablet Gripper products only.

GENERAL USE AND CARE

The Battery Operated Arrest (BOA) Holster keeps battery-operated hand tools secured and at hand. Compatible with any standard tool belt, the self-locking hook immediately captures and secures your tool by simply dropping it into the holster.

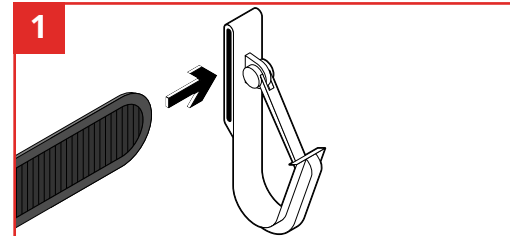
Recommended Use of GRIPPS® BOA Holster:

1. Only use in combination with GRIPPS® work belts.
2. Always inspect condition of BOA Holster prior to use.

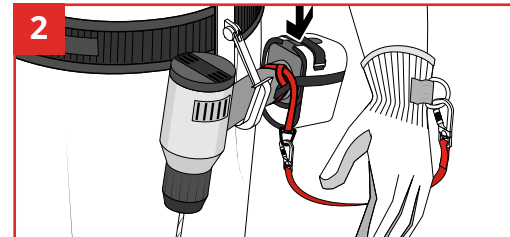
Before Use:

Thoroughly inspect your GRIPPS® DTP device before each use. Do not use any component that presents deformities or deterioration. Inspect all material including the carabiner and tether.

HOW TO USE / INSTRUCTIONS:



To connect to a work belt, thread work belt through the loop of Battery Operated Arrest Holster. Slide Belt-Loop Anchor along the work belt to where you want it positioned.



Your tethered drill (or similar device) can be stowed into the BOA after by simply pressing your tool into the latch. The latch utilizes a spring to automatically lock after. To remove your tool, press latch inwards and pull tool out. Ensure your tool is properly anchored before using BOA holster.

GRIPPS®



linkedin.com/company/grippsglobal



facebook.com/grippsglobal



youtube.com/@gripps3480grippsglobal



instagram.com/grippsglobal