

# GRIPPS®

ANSI/ISEA  
121-2018  
COMPLIANT

## S21628 C5 ECO IMPACT GLOVE

*A world first, the GRIPPS® C5 Eco Impact Glove is a carbon-neutral, impact protective glove with an in-built load-rated tether anchor point. Constructed from recycled plastic & nitrile rubber, the C5 Eco Impact is the newest innovation in industrial gloves.*

GRIPPS® recognise the need to help reduce carbon emissions and plastic waste in our oceans. GRIPPS® C5 Eco Impact gloves are helping combat both these issues whilst offering users a substantial level of protection, dexterity and tool anchor point functionality.

- In-built load-rated tether anchor point
- Provides a CO2 reduction of 227 grams per pair
- Water consumption savings of 5.15 litres per pair
- Our manufacturing process provides energy savings of 0.387 kwph per pair



5.0 LB 2.3 KG

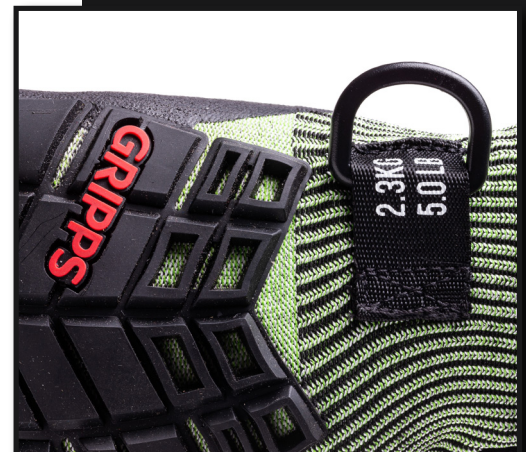
MAX LOAD:



EN 388:2016



4X43EP



THE LEADER IN FALLING OBJECT PREVENTION

GRIPPS.COM

## KEY FEATURES

Reinforced Thumb  
crotch for extra  
protection.



Ultra-Armour TPR  
Rear, protecting  
against the impact  
on the backs of  
hands.

Made from  
recycled plastic  
& rubber nitrile  
(Every pair is  
made from 1x  
recycled plastic  
bottle!)

Carbon Neutral  
Certified.

Water-Resistant.

**Load-rated  
tether anchor  
point.**

Compatible with  
GRIPPS® wrist  
tethers.

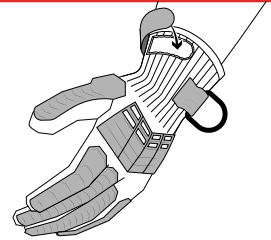
Impact  
padding and  
super  
lightweight  
HPPE knit  
liner.

Maintain the  
whole usability  
of tools.

Superior level  
of comfort.

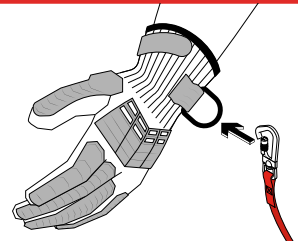
## HOW TO USE

**1**



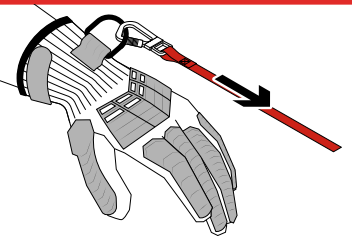
Choose correct size of glove and put on.

**2**



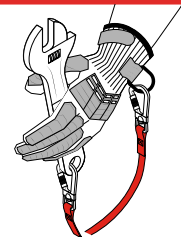
Attach a GRIPPS® wrist tether to the  
load-rated tether anchor.

**3**



Pull firmly on the tether to ensure that the  
connection is secure.

**4**



You can now work at height with your  
GRIPPS® gloves.

**\*NEVER EXCEED MAX LOAD 2.3kg/5.0lbs.**

**\*NEVER EXCEED MAX TETHER LENGTH  
25cm/9.8"**

## SPECIFICATIONS

SKU	MAX LOAD	MAX TETHER LENGTH	SIZES	GAUGE
S21628-3XL				
S21628-2XL				
S21628-XL				
S21628-L	2.3KG   5.0LBS	25CM   9.8IN	XS - 3XL	13
S21628-M				
S21628-S				
S21628-XS				
EN 388:2016	ANSI/ASTM CUT LEVEL	ANSI/ISEA 138:2019	CARBON NEUTRAL CERTIFIED	
4X43EP	A5	2	YES	

@GRIPPSGLOBAL



#ConquerGravity