

GRIPPS®

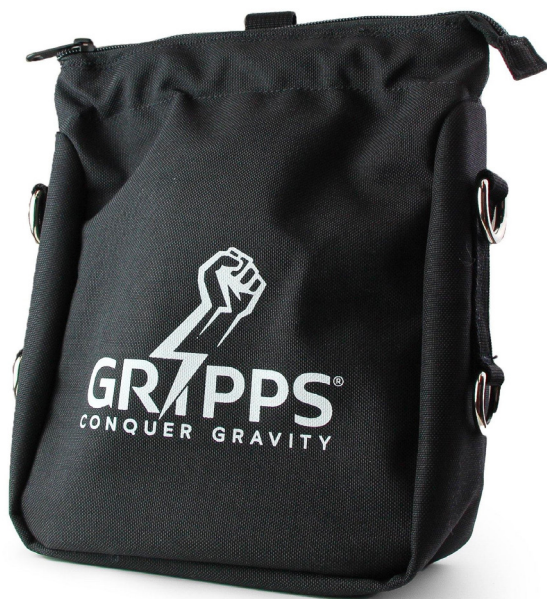
H02106 LOCKJAW RIGGERS BAG

GRIPPS® Lockjaw Riggers Bag makes tool organization, access and storage a breeze with many impressive features.

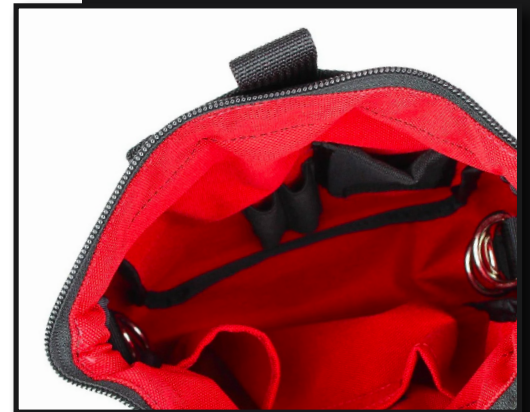
Featuring a robust metal snap frame built into the zip, the Lockjaw Riggers Bag can easily be held open (providing ample access to your bag contents) or snapped shut.

The inner sleeve features a variety of pouches, pockets and sleeves to keep everything at hand and organized.

Six internal and four external load-rated D-Rings allow you to tether all contents against drops. Fully load-rated loops allow for the Lockjaw Riggers Bag to be attached to a tool belt or harness at the waist, chest or over the shoulder.



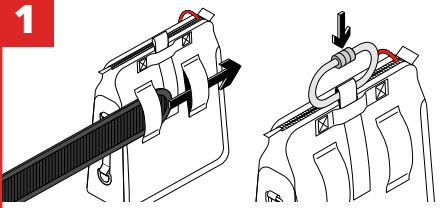
11 LB	5.0 KG
MAX LOAD:	



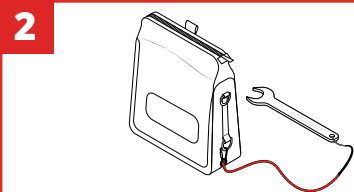
THE LEADER IN FALLING OBJECT PREVENTION

GRIPPS.COM

KEY FEATURES

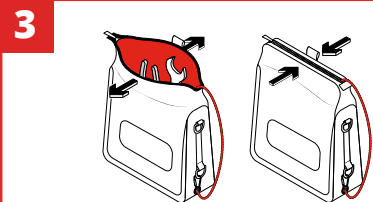


1 For applying to a work belt, feed work belt through rear loops and then secure belt to your waistline. Alternatively attach a carabiner to top loop, threading carabiner through and secure carabiner for harness work.

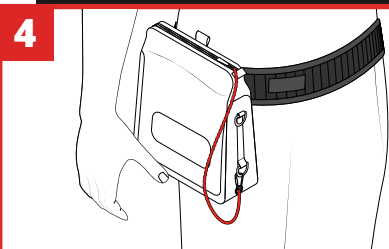


2 Connect your tool tethers to the D-Rings as required. Use the bag for holding or transporting loads. Only connect additional tethers to the load rated D-Rings.

*** NEVER EXCEED MAX LOAD of 2.5KG / 5.5LBS.**



3 To operate the metal-snap mechanism, pull the opening apart and the closure will automatically spring open and lock into place.



4 Ensure that the closure is zipped closed when not in use to prevent spills.

SPECIFICATIONS

SKU	MAX LOAD (D-RING)	MAX LOAD (POUCH)
H02106	2.5KG 5.5LBS	5.0KG 11LBS