

GRIPPS®

ANSI/ISEA
121-2018
COMPLIANT

H02076 RETRACTABLE DUAL TOOL HOLSTER MKII

The GRIPPS® Retractable Dual Tool holster is both lightweight and rugged, providing two storage pouches for small hand tools and two Steel Retractors.

Developed in the USA, the built-in retractor technology is the result of extensive research and on-site trialling, featuring a heavy-duty steel tether cable and smooth, silent extension.

- Compatible with all standard work belts



5.5 LB **2.5** KG

MAX LOAD (D-RING):

1.5 LB **0.7** KG

MAX LOAD (RETRACTOR):



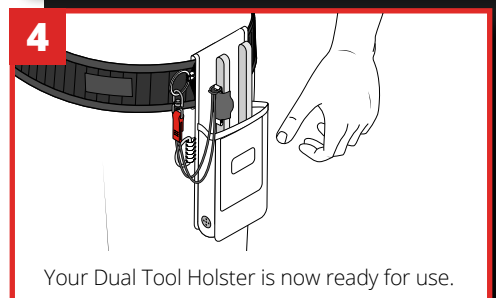
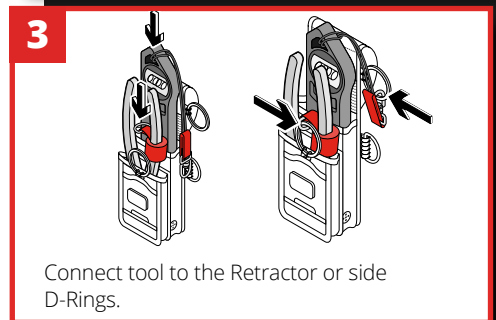
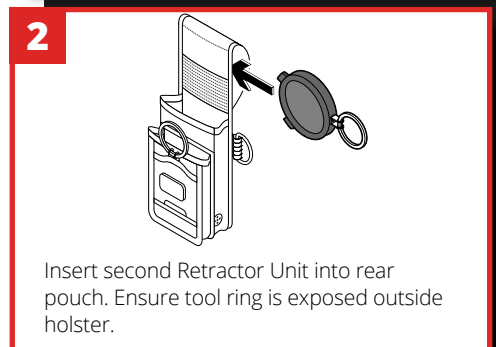
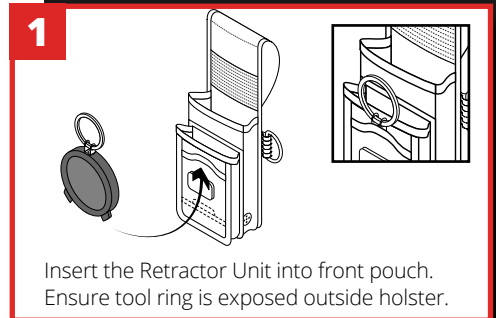
THE LEADER IN FALLING OBJECT PREVENTION

GRIPPS.COM

KEY FEATURES



HOW TO USE



SPECIFICATIONS

SKU	MAX LOAD (D-RING)	MAX LOAD (RETRACTOR)	MAX LENGTH (RETRACTOR)
H02076	2.5KG 5.5LBS	0.7KG 1.5LBS	1.2M 47"