

GRIPPS®

**ANSI/ISEA
121-2018
COMPLIANT**

H02072 RETRACTABLE SINGLE TOOL HOLSTER MKII WITH AUTO-STOP

This holster includes the option for a horizontal-release retractor unit.

- Compatible with all standard work belts



5.5_{LB} 2.5_{KG}

MAX LOAD (D-RING):

1.5_{LB} 0.7_{KG}

MAX LOAD (RETRACTOR):

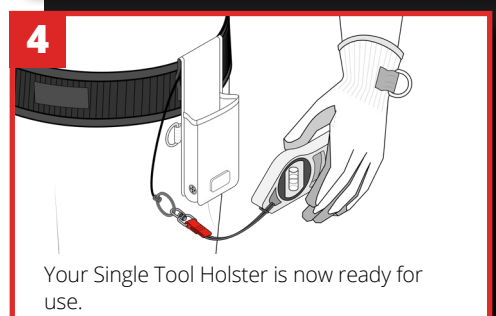
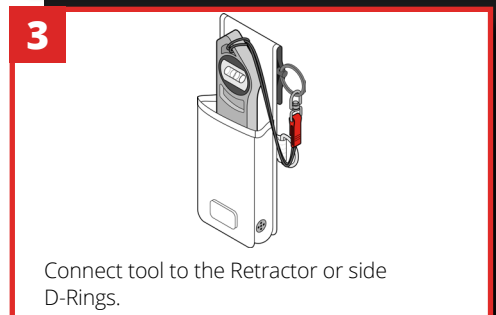
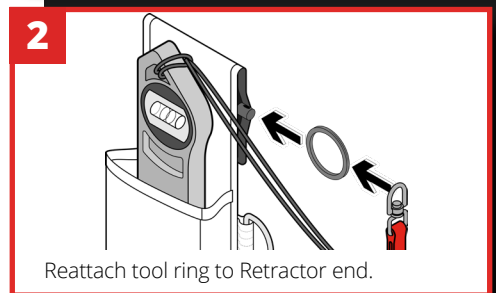
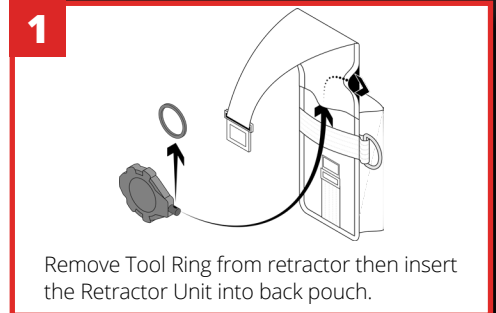
THE LEADER IN FALLING OBJECT PREVENTION

GRIPPS.COM

KEY FEATURES



HOW TO USE



SPECIFICATIONS

SKU	MAX LOAD (D-RING)	MAX LOAD (RETRACTOR)	MAX LENGTH (RETRACTOR)
H02072	2.5KG 5.5LBS	0.7KG 1.5LBS	1.2M 47"