

GRIPPS®

ANSI/ISEA
121-2018
COMPLIANT

H01117 LEATHER WORK BELT

ANSI/ISEA 121-2018 certified and with a heavy-duty design, the GRIPPS® Leather Work Belt seamlessly adapts to various applications—whether over your jacket, supporting a back brace, or worn directly on the body. This comfortable and highly durable tool belt is compatible with the entire GRIPPS® holster range. It is a game-changer for scaffolders and construction professionals working at heights.

- 3 x Sizes available
- Genuine cowhide leather



22 LB **10** KG
MAX LOAD:

THE LEADER IN FALLING OBJECT PREVENTION

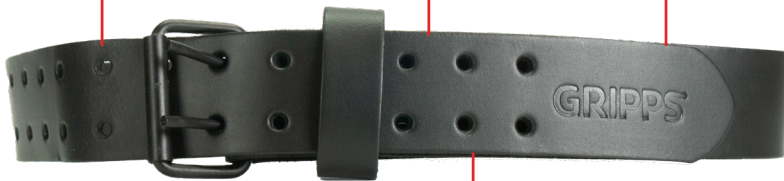
GRIPPS.COM

KEY FEATURES

ANSI/ISEA 121-2018 compliant.

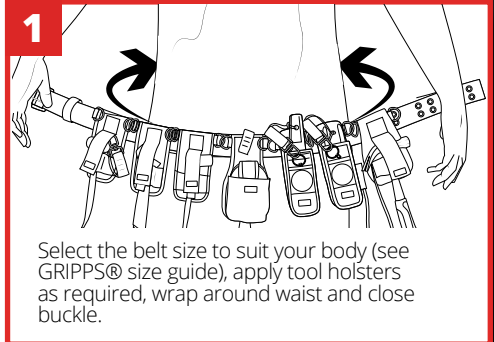
100% genuine cowhide leather.

Compatible with GRIPPS® tool holster range.

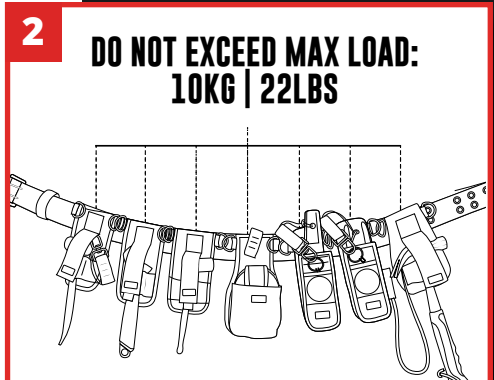


Durable steel buckle.

Significant adjustment.



1 Select the belt size to suit your body (see GRIPPS® size guide), apply tool holsters as required, wrap around waist and close buckle.



2 **DO NOT EXCEED MAX LOAD:
10KG | 22LBS**

The load rating of this belt relates to the sum total weight of tools to the belt. Do not tether any single tool weighing over 2.5kg | 5.5lbs to the body.

SIZE GUIDE

GRIPPS® BELT	SKU	RECOMMENDED SIZE (BASED ON STANDARD PANT SIZE)	BELT RANGE
SMALL	H01117-S	Up to 34"	28 - 41"
MEDIUM	H01117-M	From 35" to 41"	35 - 48"
LARGE	H01117-L	42" and over	42 - 55"

SPECIFICATIONS

SKU	MAX LOAD (SUM OF TOOLS APPLIED)	MAX TETHER LENGTH
H01117-S H01117-M H01117-L	10KG 22LBS	1.3M 51"

@GRIPPSGLOBAL



#ConquerGravity