

## REMOVAL

1. Before proceeding with the following repair procedure, review all warnings and cautions.

**WARNING:** The Seat Weight Sensor is a sensitive, calibrated unit and must be handled carefully. Do not drop or handle roughly. If dropped or damaged, replace with another sensor. Failure to follow these instructions may result in personal injury or death.

**WARNING:** The front passenger seat must be handled carefully as well. When removing the seat, be careful when setting on floor not to drop. If dropped, the sensor may be inoperative. Failure to follow these instructions may result in personal injury or death.

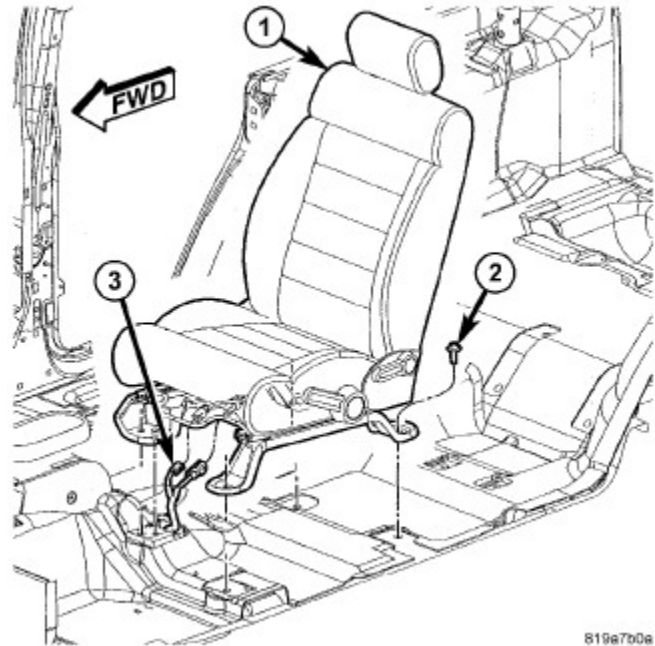
**WARNING:** When the seat is on the floor, no one should sit in the front passenger seat. This uneven force may damage the sensing ability of the seat weight sensors. If sat on and damaged, the sensor may be inoperative. Failure to follow these instructions may result in personal injury or death.

**NOTE:** If equipped with a traveling seat belt anchor.

2. Adjust the front seat (1) to its most forward position for easiest access to the front seat belt (3) lower anchor and the B-pillar trim.
3. Disconnect and isolate the battery negative cable. Wait two minutes for the system capacitor to discharge before further service.
4. Remove the screw (2) that secures the lower anchor to the outboard side of the front seat cushion frame.



5. Remove the four seat bolts (2).
6. Tip the seat back and disconnect the electrical connectors (3).
7. Remove the seat.

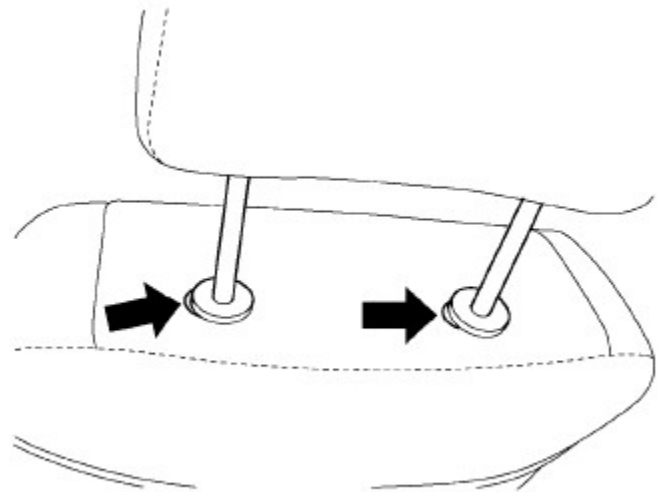


819a7b0a

## Body/Seats/COVER, Seat Back, Front/Removal

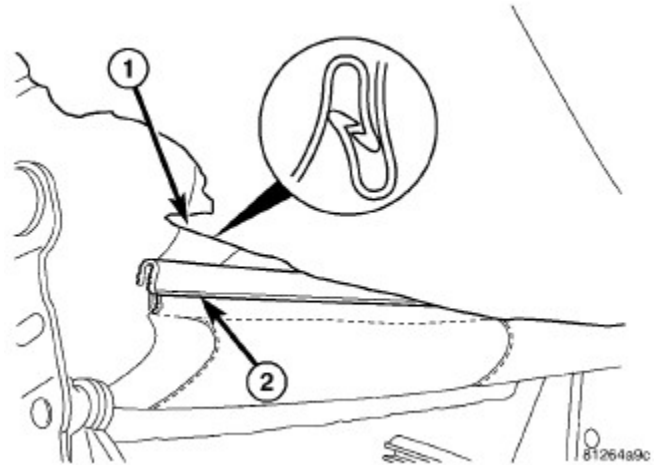
### REMOVAL

1. Before proceeding with the following repair procedure, review all warnings and cautions.
2. For appropriate seat configuration illustrations.
3. Remove the front seat.
4. Remove the seat recliner easy entry levers, if equipped.
5. Position aside the seat back cover and remove the seat back assembly bolts.
6. If equipped, disconnect the electrical connectors and remove the seat back.
7. Push in the buttons on both headrest sleeves, pull the headrest up and remove.

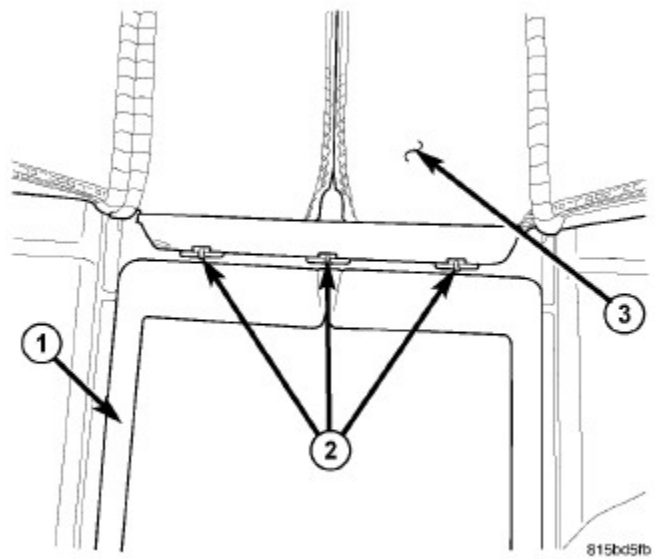


812cdd63

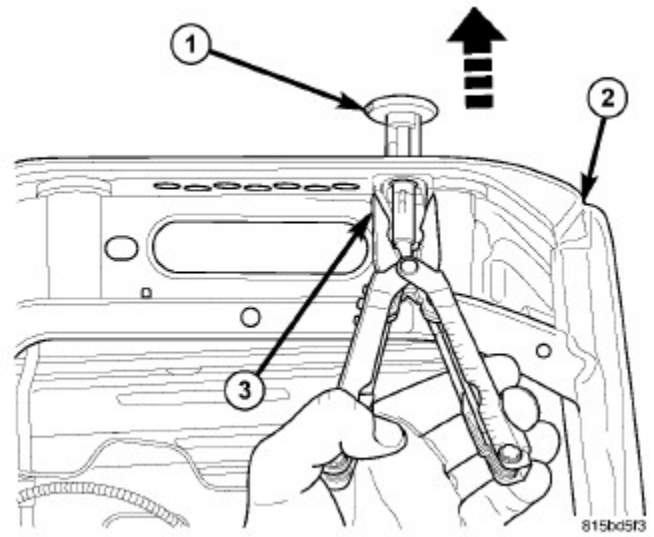
8. Separate the J-straps (1 AND 2) and pull cover up over frame.
9. Unzip the cover zippers.
10. On vehicles equipped with seat air bags, remove the air bag.



11. Cut off the hog rings (2) attaching the cover (3) to the cushion (1).



12. Squeeze the locking tab (3) and remove the headrest sleeves (1) and remove the cover.



## **Body/Seats/COVER, Seat Cushion, Front/Removal**

### **REMOVAL**

1. Before proceeding with the following repair procedure, review all warnings and cautions.
2. For appropriate seat configuration illustrations.
3. Remove the front seat.
4. Remove the lift handle, if equipped.
5. Separate the J-straps from the seat cushion frame and remove the seat cushion and cover.
6. Remove the hog rings and separate the cover from the cushion.

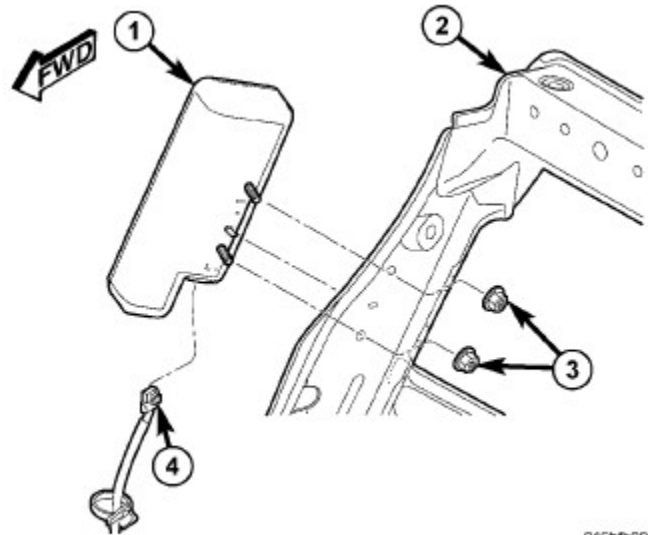
## Restraints/AIR BAG, Seat/Removal

# REMOVAL

**WARNING:** To avoid serious or fatal injury on vehicles equipped with airbags, disable the Supplemental Restraint System (SRS) before attempting any steering wheel, steering column, airbag, seat belt tensioner, impact sensor or instrument panel component diagnosis or service. Disconnect and isolate the battery negative (ground) cable, then wait two minutes for the system capacitor to discharge before performing further diagnosis or service. This is the only sure way to disable the SRS. Failure to take the proper precautions could result in accidental airbag deployment.

**WARNING:** To avoid serious or fatal injury when removing a deployed airbag, rubber gloves, eye protection, and a long-sleeved shirt should be worn. There may be deposits on the airbag unit and other interior surfaces. In large doses, these deposits may cause irritation to the skin and eyes.

1. Position the front seat to its most forward position for easiest access to the front seat back.
2. Disconnect and isolate the battery negative cable. Wait two minutes for the system capacitor to discharge before further service.
3. Fold the seat back rearward for easiest access to the J-hook retainers at the base of the seat back trim cover
4. Disengage the J-hook retainers that secure the front and rear lower edges of the seat back trim cover to each other at the base of the seat back.



5. Fold the seat back forward for easiest access to the back of the seat back trim cover
6. Remove the recliner handle and, on the passenger side only, the easy entry handle from the outboard side of the seat.
7. Pull up the front and rear lower edges of the seat back trim cover far enough to access the seat airbag unit on the outboard side of the seat back frame.

**CAUTION:** Do not pull on the seat airbag jumper wire harness (4) or pry on the connector insulator to disengage the connector from the seat airbag (1) inflator

**connector receptacle. Improper removal of this jumper wire and its connector insulator can result in damage to the airbag circuits or the connector insulator.**

8. Reach between the seat back trim cover and the foam pad on the outboard side of the seat back frame to access and disconnect the seat airbag jumper wire harness connector from the seat airbag inflator. Squeeze the black latch tabs on each side of the connector insulator, then pull the insulator straight out from the airbag inflator initiator to disconnect it from the connector receptacle.

**CAUTION:** During removal of the seat airbag, be certain not to tear or damage the sewn nylon pouch integral to the inside of the seat back trim cover that contains the seat airbag. If the nylon pouch or the trim cover are torn or damaged, the entire front seat back trim cover must be replaced with a new unit.

9. Remove the two nuts (3) from the inboard side of the outboard seat back frame that secure the seat airbag to the side of the seat back.
10. Pull the seat airbag outward from the seat back far enough to disengage the airbag mounting studs from the seat back frame.
11. Disengage the seat airbag from the sewn pouch on the inside of the seat back trim cover and remove the airbag from the seat back.



## Body/Seats/SEAT, Front/Installation

# INSTALLATION

1. Before proceeding with the following repair procedure, review all warnings and cautions.

**WARNING:** The Seat Weight Sensor is a sensitive, calibrated unit and must be handled carefully. Do not drop or handle roughly. If dropped or damaged, replace with another sensor. Failure to follow these instructions may result in personal injury or death.

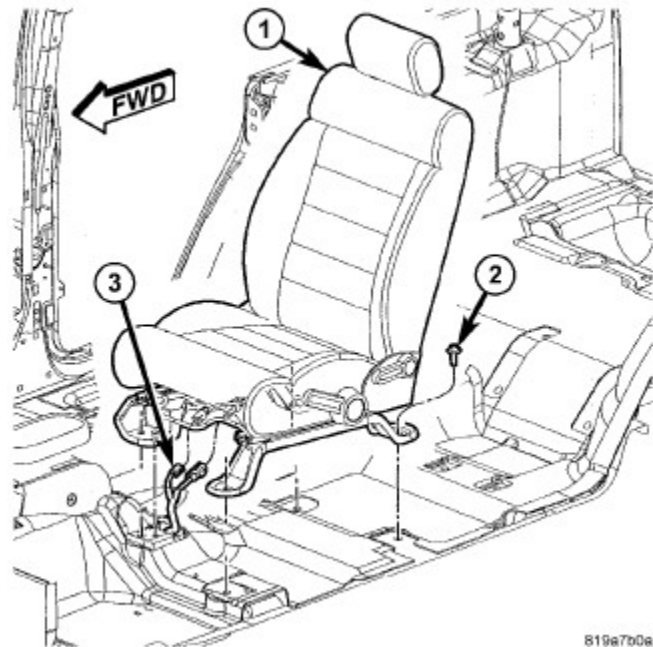
**WARNING:** The front passenger seat must be handled carefully as well. When removing the seat, be careful when setting on floor not to drop. If dropped, the sensor may be inoperative. Failure to follow these instructions may result in personal injury or death.

**WARNING:** When the seat is on the floor, no one should sit in the front passenger seat. This uneven force may damage the sensing ability of the seat weight sensors. If sat on and damaged, the sensor may be inoperative. Failure to follow these instructions may result in personal injury or death.

2. Position the seat into the vehicle and connect the electrical connectors (3), if equipped.

3. Install the bolts (2).

- a. Adjust the seat rearward.
- b. Tighten the front inboard bolt to 75 N·m (55 ft. lbs.).
- c. Tighten the front outboard bolt to 75 N·m (55 ft. lbs.).
- d. Adjust the seat forward.
- e. Tighten the rear inboard bolt to 75 N·m (55 ft. lbs.).
- f. Tighten the rear outboard bolt to 75 N·m (55 ft. lbs.).



819a7b0e

**NOTE:** If equipped with a traveling seat belt anchor.

4. Position the seat belt (3) lower anchor to the mounting hole on the outboard side of the front seat (1) cushion frame. Be certain that the seat belt webbing between the turning loop and the lower anchor is not twisted.
5. Install and tighten the screw (2) that secures the lower anchor to the seat. Tighten the screw to 40 N·m (30 ft. lbs.).
6. Do not reconnect the battery negative cable at this time. The supplemental restraint system verification test procedure should be performed following service of any supplemental restraint system component.



819d0f23