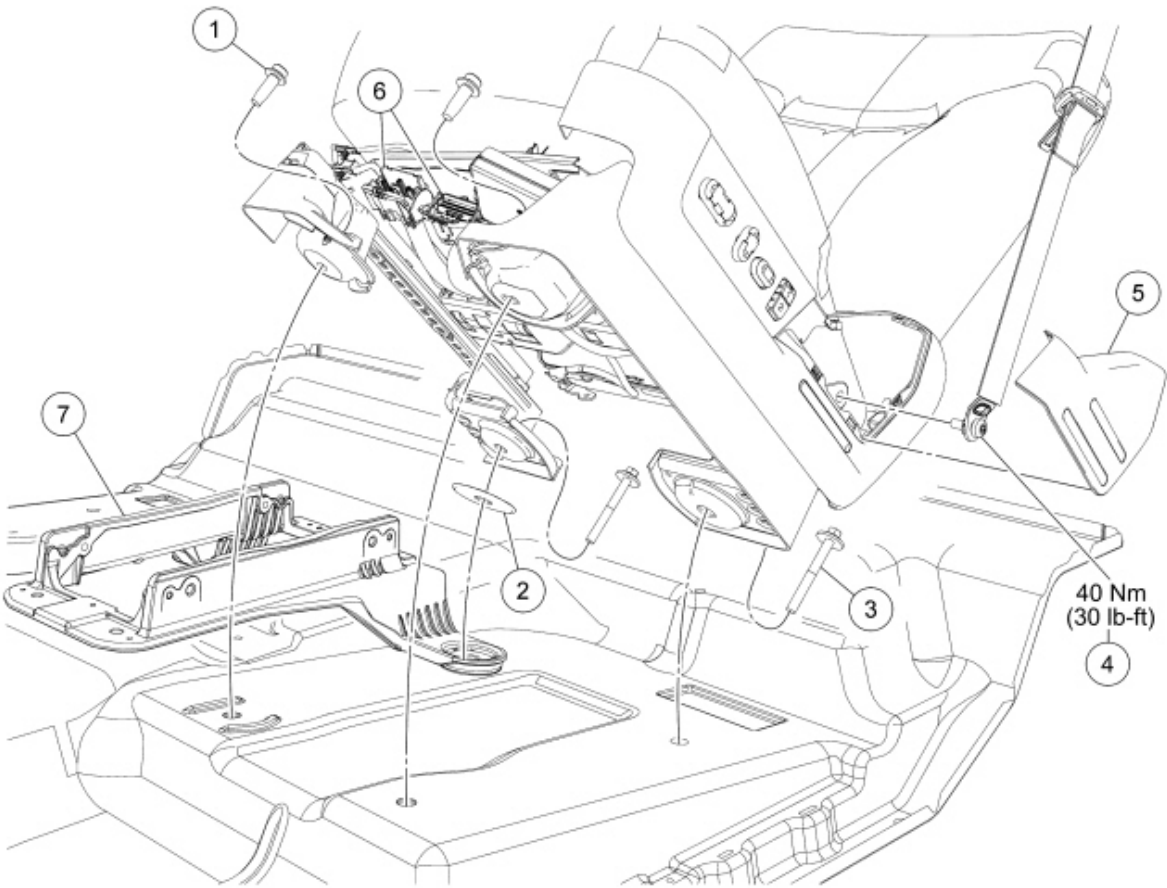


Seat — Front

Driver Seat

NOTE: Refer to the installation steps for tightening sequence and torque specification.



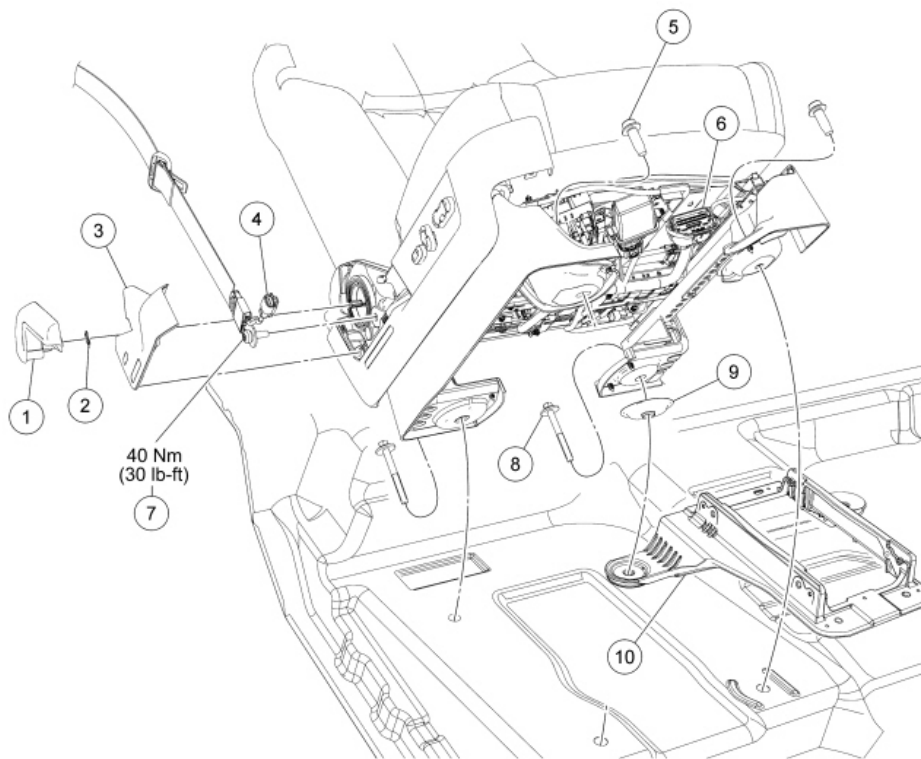
N0098729

Item	Part Number	Description
------	-------------	-------------

1	W714302	Front seat mounting bolt (2 required)
2	—	Upper spacer (part of 045B34)
3	W714093	Rear seat mounting bolt (2 required)
4	—	Safety belt anchor and bolt (part of 611B09) (regular and Crew Cab only)
5	61693	Safety belt anchor cover (regular and Crew Cab only)
6	—	Seat electrical connectors (part of 14D231)
7	045B34	Pedestal

Passenger Seat

NOTE: Refer to the installation steps for tightening sequence and torque specification.




N0096041

Item	Part Number	Description
------	-------------	-------------

1	62622	Manual recliner handle (if equipped)
2	—	Manual recliner handle retainer (if equipped)
3	61692	Safety belt anchor cover (regular and Crew Cab only)
4	—	Belt Tension Sensor (BTS) electrical connector (part of 611B08)
5	W714302	Front seat mounting bolt (2 required)
6	—	Seat electrical connector (part of 14D230)
7	—	Safety belt anchor and bolt (part of 611B08) (regular and Crew Cab only)
8	W714093	Rear seat mounting bolt (2 required)
9	—	Upper spacer (part of 045B34)
10	045B34	Pedestal

Removal

 **WARNING:** Never probe the electrical connectors on air bag, Safety Canopy® or side air curtain modules. Failure to follow this instruction may result in the accidental deployment of these modules, which increases the risk of serious personal injury or death.

NOTICE: The pedestal used for front center seat and floor console mounting contains press fit washers and spacers designed to prevent corrosion at the front seat and floor console mounting areas. Do not remove these parts from the pedestal during service and make sure they are correctly positioned before installation. Failure to follow these instructions may result in severe corrosion damage to mounting areas and fasteners.

NOTE: The air bag warning indicator illuminates when the correct Restraints Control Module (RCM) fuse is removed and the ignition is ON.

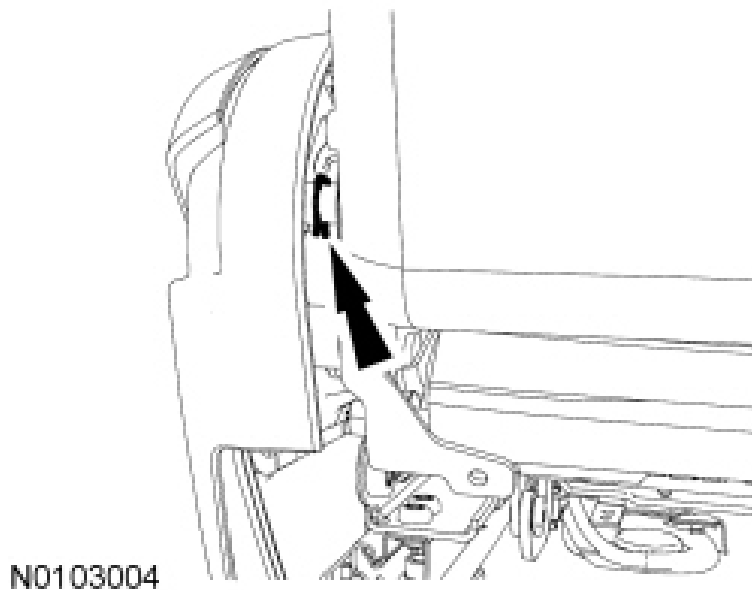
NOTE: The Supplemental Restraint System (SRS) must be fully operational and free of faults before releasing the vehicle to the customer.

All vehicles

1. Remove the covers and 2 rear seat mounting bolts.


Regular cab and Crew Cab

2. If equipped, remove the manual recline handle.
 - Insert an appropriate tool behind the cushion side shield, release the retainer and remove the handle.



3. Remove the safety belt anchor cover.
 - If power seat, position the seat fully down.
 - Insert an appropriate tool, release the lower retainers, lift to release the upper retainers tabs and remove the cover.
 - Return any detached retainers to the side shield.
4. Remove the bolt and safety belt anchor.
 - If passenger seat, disconnect the Belt Tension Sensor (BTS) electrical connector.

All vehicles

5. Position the seat and remove the 2 front seat mounting bolts.
6. Depower the SRS.
7.  **WARNING: Use care when handling the front passenger seat and track assembly. Dropping the assembly, placing excessive weight on or sitting on a front passenger seat that is not secured in the vehicle may result in damaged seat components. Failure to follow these instructions may result in incorrect operation of the occupant classification system (OCS) and increases the risk of serious personal injury or death in a crash.**

Disconnect the seat electrical connector(s) from the body wiring harness and remove the seat from the vehicle.

- If the upper spacer (at rear inboard mount) separates from the pedestal (under carpet), make sure it is returned for correct installation.

Installation



WARNING: Make sure the front passenger seat is correctly installed and fastened to the vehicle. Do not force the alignment to the floorpan mounting holes. If the seat does not align to the floorpan mounting holes, repair the seat or floorpan as needed. Failure to follow these instructions may result in incorrect operation of the occupant classification system (OCS) and increase the risk of serious personal injury or death in a crash.

All vehicles

1. **NOTE:** Before installation, make sure the safety belt webbing is not twisted and the safety belts and buckles are accessible to the occupants.

Position the seat in the vehicle and connect the seat to body wire harness electrical connector(s).

- Make sure the upper spacer is correctly positioned between the pedestal and seat at the rear inboard mount.
2. Install the 2 front mounting bolts and tighten in the following sequence:
 1. If manual seat track, make sure the seat track rails are in sync and locked for correct mounting alignment.
 2. Tighten the front seat mounting bolt on the inboard side.
 - Tighten to 55 Nm (41 lb-ft).
 3. Tighten the front seat mounting bolt on the outboard side.
 - Tighten to 55 Nm (41 lb-ft).

Regular cab and Crew Cab

3. Install the safety belt anchor and bolt.
 - Tighten to 40 Nm (30 lb-ft).
 - If passenger seat, connect the BTS electrical connector.
4. Install the safety belt anchor cover.
5. If equipped, install the manual recline handle and retainer.

All vehicles

6. Repower the SRS. **If a passenger seat has been serviced, do not prove out the SRS at this time.**
7. Position the seat forward and install the 2 rear seat mounting bolts and covers.
 - Tighten to 55 Nm (41 lb-ft).

8. For passenger seat, carry out the Occupant Classification System (OCS) System Reset.

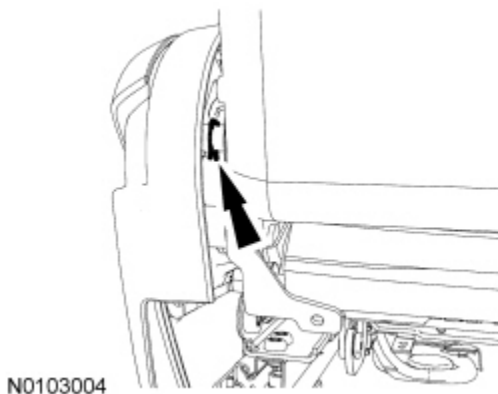
REMOVAL AND INSTALLATION

Seat Backrest Cover — Front**Removal and Installation**


⚠ WARNING: Front seat backrest trim covers installed on seats equipped with seat side air bags cannot be repaired. A new trim cover must be installed. Cleaning is permissible. Failure to follow these instructions may result in the seat side air bag module deploying incorrectly and increase the risk of serious personal injury or death in a crash.


NOTE: If a side air bag deployment took place, a new seat backrest foam pad, backrest trim cover, deployment chute and side air bag module and nuts must be installed. A new seat backrest frame should be installed if necessary.

1. Remove the seat.
2. Remove the 2 head restraint guide sleeves.
3. Release the backrest cover J-clip and unzip the 2 zippers.
 - Route the J-clip between the seat cushion and backrest.
4. For SuperCab, remove the manual recline handle, if equipped.
 - Insert an appropriate tool behind the cushion side shield, release the retainer and remove the handle.



5. If equipped, remove the adjustable lumbar knob.
 - Adjust the lumbar until fully relaxed.
 - Release the retainer and remove the knob.
6. Remove the side shield insert.

- Release the lower retainer clips and lift to release the upper retainer tabs.
 - If equipped, disconnect the seat control switch electrical connector.
 - If equipped, disconnect the memory SET switch electrical connector.
7. Remove the side shield.
- Remove the front and rear side shield screws.
 - Pull the side shield outward to release the retainers and remove.
 - Remove any retainers remaining in the seat track and reinstall them to the side shield.
8.  **WARNING: Always carry or place a live air bag module with the air bag and deployment door/trim cover/tear seam pointed away from the body. Do not set a live air bag module down with the deployment door/trim cover/tear seam face down. Failure to follow these instructions may result in serious personal injury in the event of an accidental deployment.**

 **WARNING: Before installing the seat side air bag module/deployment chute assembly:**

- **Inspect the side air bag module and mounting surfaces for any damage or foreign material.**
- **Remove any foreign material from the mounting surfaces of the deployment chute, the seat backrest frame mounting bracket and the air bag module cavity in the seat backrest foam pad.**
- **Install new parts if damaged.**

Failure to follow these instructions may result in the seat side air bag deploying incorrectly, which increases the risk of serious personal injury or death in a crash.

Remove the side air bag module.

- Remove the 2 side air bag nuts.
 - To install, tighten to 9 Nm (80 lb-in).
 - Separate the side air bag module from the backrest frame and disconnect the electrical connector.
 - Slide the side air bag module out of the deployment chute.
 - Route the deployment chute through the opening in the backrest foam pad.
9. **NOTICE: Use care when separating the seat backrest cover from the hook-and-loop strip, or the hook-and-loop strip can be torn from the foam pad.**

Release the J-clip from the backrest frame and partially invert the backrest cover to the row of hog rings.

10. Remove all the hog rings and backrest cover.

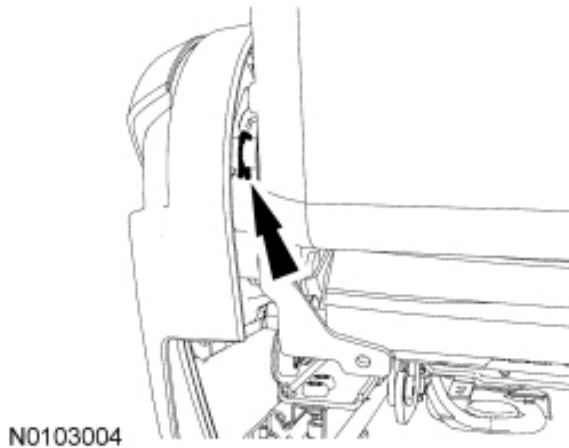
- For climate controlled seat, before installation, make sure the backrest manifold is correctly fitted into the valleys in the foam pad.

11. To install, reverse the removal procedure.

REMOVAL AND INSTALLATION

Seat Cushion Cover — Front**Removal and Installation**

1. Remove the seat.
2. For SuperCab, remove the manual recline handle, if equipped.
 - Insert an appropriate tool behind the cushion side shield, release the retainer and remove the handle.



3. If equipped, remove the adjustable lumbar knob.
 - Adjust the lumbar until fully relaxed.
 - Release the retainer and remove the knob.
4. Remove the side shield insert.
 - Release the lower retainers and lift to release the upper retainers.
 - If equipped, disconnect the seat control switch electrical connector.
 - If equipped, disconnect the memory SET switch electrical connector.
5. Remove the side shield.
 - Remove the front and rear side shield screw.
 - Pull the cushion side shield outward to release the retainers.
 - Reinstall all retainers back to the side shield.
6. Release cushion cover rear J-clip and rear flaps.
7. If equipped, disconnect the cushion heater mat electrical connector and detach the wiring harness.

8. Release all the cushion cover retainers and remove the cover and foam pad.
9. ***NOTICE:*** Use care when separating the seat cushion cover from the hook-and-loop strip, or the hook-and-loop strip can be torn from the foam pad.

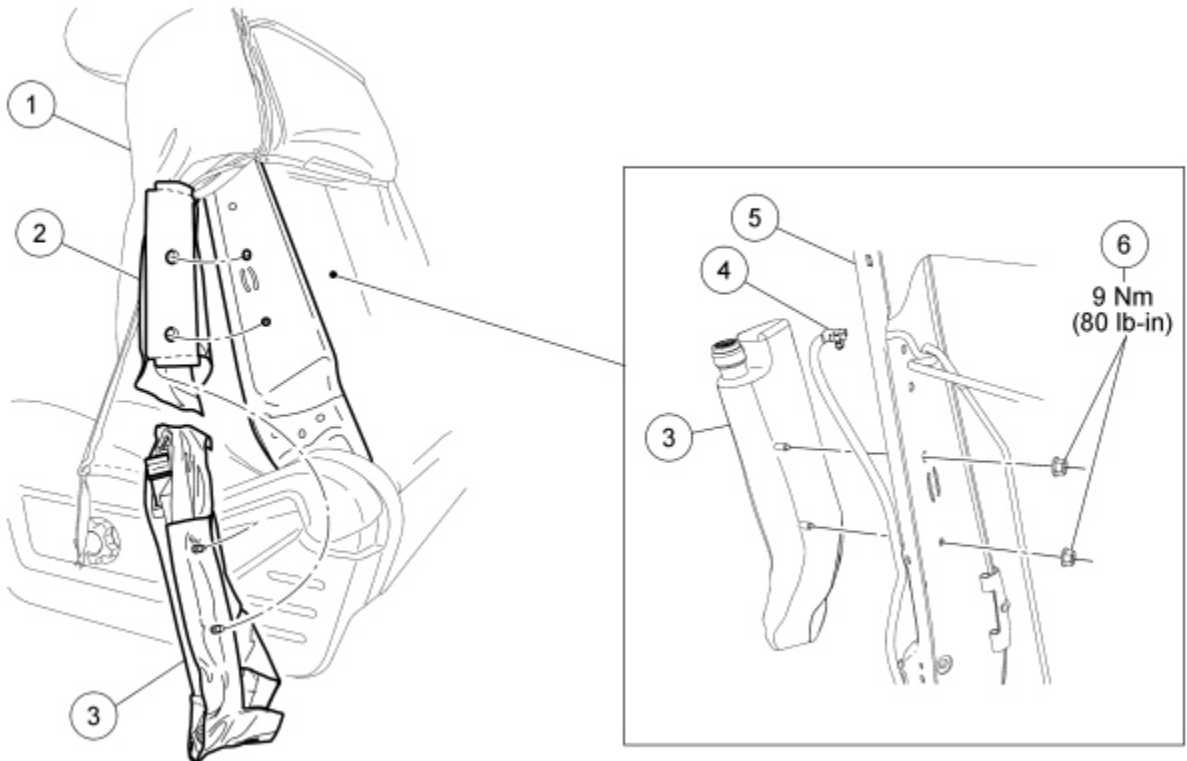
Remove all the hog rings and cushion cover.

- For correct installation, make sure the rear strap on the cushion cover is looped around the cushion foam pad.
- For climate controlled seat, before installation, make sure the cushion manifold is correctly fitted into the valleys of the foam pad.

10. To install, reverse the removal procedure.

Side Air Bag Module

NOTE: Driver seat shown, passenger similar.



N0093076

Item	Part Number	Description
1	64417	Backrest cover
2	—	Deployment chute (part of 64417)
3	611D10	Side air bag module
4	—	Electrical connector (part of 14K155)
5	61018	Seat backrest frame
6	W520111	Side air bag module nuts (2 required)

Removal and Installation

⚠ WARNING: Always carry or place a live air bag module with the air bag and deployment door/trim cover/tear seam pointed away from the body. Do not set a live air bag module down with the deployment door/trim cover/tear seam face down. Failure to follow these instructions may result in serious personal injury in the event of an accidental deployment.

⚠ WARNING: Never probe the electrical connectors on air bag, Safety Canopy® or side air curtain modules. Failure to follow this instruction may result in the accidental deployment of these modules, which increases the risk of serious personal injury or death.

⚠ WARNING: If the seat side air bag cover has been damaged or separated from its mounting, or if the air bag material has been exposed, install a new seat side air bag module. Never try to repair the seat side air bag module. Failure to follow these instructions may result in the seat side air bag deploying incorrectly, which increases the risk of serious personal injury or death in a crash.


⚠ WARNING: Front seat backrest trim covers installed on seats equipped with seat side air bags cannot be repaired. A new trim cover must be installed. Cleaning is permissible. Failure to follow these instructions may result in the seat side air bag module deploying incorrectly and increase the risk of serious personal injury or death in a crash.

NOTE: If a side air bag deployment took place, a new seat back pad, trim cover and side air bag module must be installed. The seat backrest frame should be installed new if necessary.

NOTE: The air bag warning indicator illuminates when the correct Restraints Control Module (RCM) fuse is removed and the ignition is ON.

NOTE: The Supplemental Restraint System (SRS) must be fully operational and free of faults before releasing the vehicle to the customer.

1. Depower the SRS.
2. Release the seat backrest cover J-clip and unzip the zippers.
3. Remove the 2 side air bag module nuts.
 - To install, tighten to 9 Nm (80 lb-in).
4. Position the side air bag module away from the seat backrest frame.
5. Disconnect the side air bag module electrical connector.
6. Remove the side air bag module.
 - Pull the side air bag module mounting studs back through the deployment chute openings and remove the side air bag module from the deployment chute.

7.  **WARNING: Before installing the seat side air bag module/deployment chute assembly:**
- **Inspect the side air bag module and mounting surfaces for any damage or foreign material.**
 - **Remove any foreign material from the mounting surfaces of the deployment chute, the seat backrest frame mounting bracket and the air bag module cavity in the seat backrest foam pad.**
 - **Install new parts if damaged.**

Failure to follow these instructions may result in the seat side air bag deploying incorrectly, which increases the risk of serious personal injury or death in a crash.

To install, reverse the removal procedure.

- The deployment chute should not have any wrinkles or folds where it contacts the seat backrest frame mounting bracket.