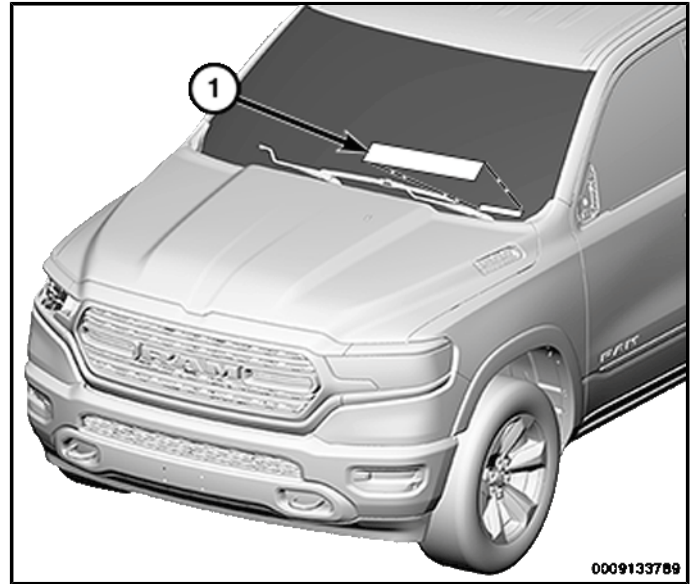


VEHICLE IDENTIFICATION NUMBER

The Vehicle Identification Number (VIN) plate (1) is located on the lower windshield near the left A-pillar. The VIN contains 17 characters that provide data concerning the vehicle. Refer to the VIN decoding chart to determine the identification of a vehicle.



The VIN is also imprinted on the:

- Equipment Identification Plate.
- Vehicle Safety Certification Label.
- Frame rail.

POSITIONS 1 - 3: WORLD MANUFACTURER IDENTIFIER

1	2	3	MANUFACTURER	VEHICLE TYPE
1	C	6	FCA US LLC	Truck

POSITION 4: BRAKE SYSTEM & GVWR

Brake System	GVWR Range		Active Belts, Air Bags	Active Belts, Air Bags, Side Bags-Front Row	Active Belts, Air Bags, Side Bags-All Rows	Active Belts, No Air Bags	Active Belts, GVWR > 10,000 lbs.
	Pounds	Kilograms					
Hydraulic	6001 - 7000	(2722 - 3175 KG)			R		
Hydraulic	7001 - 8000	(3176 - 3628 KG)			S		

POSITIONS 5 - 7

Define the following: brand, marketing name, drive wheels, cab/body type, drive position, and price series.

Ram 1500 (DT) Left Hand Drive Truck Single Rear Wheels

2WD			4WD			Cab Type	Series
R	E	A	—	—	—	Quad Cab	HFE (High Fuel Efficiency)
R	E	B	R	F	B		Big Horn
R	E	C	R	F	C		Tradesman
R	E	D	R	F	D		Laramie
R	E	E	R	F	E		Rebel (U,BUX) Sport 2TL pkg / Rebel 2TW pkg (Can)
R	E	F	R	F	F	Crew Cab Short Bed	Big Horn
R	E	G	R	F	G		Tradesman
R	E	H	R	F	H		Limited
R	E	J	R	F	J		Laramie
R	E	K	R	F	K		Longhorn
R	E	L	R	F	L		Rebel (U,BUX) Sport 2TL pkg / Rebel 2TW pkg (Can)
R	E	M	R	F	M	Crew Cab Long Bed	Big Horn
R	E	N	R	F	N		Tradesman
R	E	P	R	F	P		Limited
R	E	R	R	F	R		Laramie
R	E	S	R	F	S		Longhorn
R	E	T	R	F	T		Sport

POSITION 8: ENGINE – HORSEPOWER CHART

Engine Code	G	T
Displacement	3.6L	5.7L
Cylinders	V6	V8
Fuel	Gas	Gas
Manufacturer	FCA	FCA
Horse Power Rating	305	395

NOTE: All values in chart are horsepower.

POSITION 9: CHECK DIGIT

0 through 9 or X

POSITION 10: MODEL YEAR

K = 2019

POSITION 11: ASSEMBLY PLANT

Code	Plant	City	State	Country
N	Sterling Heights Assembly Plant	Sterling Heights	MI	USA

POSITION 12 - 17: PLANT SEQUENCE NUMBER

A six digit number assigned by assembly plant.