



United States Patents
 US 0,748,739 S US 9,145,154 B1
 US 0,757,637 S

Europe Registered Community Design No
 003423193-0001
 003395656-0001

PUSH/PULL TITANIUM SERIES INSTRUCTIONS

Video Instructions: <https://www.youtube.com/watch?v=RGTi01I9Z60>
 Safety Harness: https://www.youtube.com/watch?v=Y_CxX2JB5DQ

WAGON SET-UP INSTRUCTIONS

Step 1



Disengage all wheel brakes by lifting up on brake lever with hand or foot.

Step 2



Squeeze frame together and release red locking latch.

Step 3



Spread the wagon frame open until it comes to a fully opened position. Use caution near moving parts to prevent pinching.

To Pull



Release handle from retaining clip and extend handle to fully extended position. You will hear a click as it locks into place.

To Push



Simultaneously push both large round buttons with thumbs and adjust handle to desired position.

Enjoy!



Your wagon is now ready for use.

****Never leave wagon unsupervised.**
****Always engage wheel brakes when stopped.**

Rear Tray



Unclip rear tray and lower to open. Use as additional storage or extended interior capacity for carrying oversized items or for children to stretch their legs.

Rear Basket



Raise or lower rear basket by pressing tabs on each side. Release tabs to lock.

Rear Door



Zip open rear door to extend internal carrying capacity in conjunction with the rear tray.

CARE: Use a damp cloth to clean. Do not use chemicals.

HELPLINE: 1-949-381-7367
EMAIL: SALES@CUSTOMFOLDINGWAGONS.COM

MADE IN CHINA



United States Patents
 US 0,748,739 S US 9,145,154 B1
 US 0,757,637 S

Europe Registered Community Design No
 003423193-0001
 003395656-0001

PUSH/PULL TITANIUM SERIES INSTRUCTIONS

Video Instructions: <https://www.youtube.com/watch?v=RGTi01I9Z60>
 Safety Harness: https://www.youtube.com/watch?v=Y_CxX2JB5DQ

CANOPY INSTRUCTIONS

Step 1



Release each of the four canopy rods from their retaining clips and, while pressing the thumb button, rotate the canopy rods to their upright vertical position and release the button to lock.

Step 2



Do not insert the rods into the plastic corners. They are not sleeves.

After all four canopy rods are locked in the upright vertical position, drape the canopy over the rods aligning each corner with a rod. The resulting tension will keep the canopy taut.

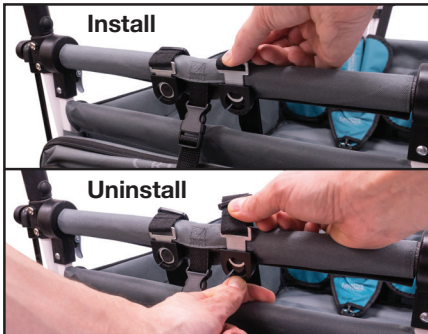
Step 3



Zip open and secure in the open position with the hook and loop patches on the opposite corners.

5-POINT SAFETY HARNESS

Shoulder Straps



To Install: place shoulder straps over padded cross bar and push into slot.
To Uninstall: press bottom tab with your thumb and pull out.

D-Ring clips



Ensure harness is secured to remaining three d-rings with the clips.

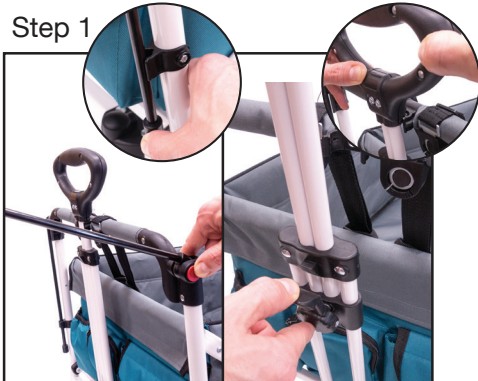
Child Safety Harness Buckles



Always be sure children are safely secured within the safety harness. Secure buckles and adjust straps for a snug fit.

FOLD-UP INSTRUCTIONS

Step 1



Rotate canopy rods to down position and secure in retaining clip. Release handle locking mechanism to fully retract handle and secure handle in handle retaining clip.

Step 2



Pull straight up on loop inside wagon to begin folding.

Step 3



While compressing frame in closed position, secure the red locking latch and set locking wheel brakes for storage.

CARE: Use a damp cloth to clean. Do not use chemicals.

HELPLINE 1-949-381-7367
EMAIL: SALES@CUSTOMFOLDINGWAGONS.COM

MADE IN CHINA