

PUSH/PULL FOLDING WAGON WITH CANOPY INSTRUCTIONS

CONTENTS

(1) Folding Wagon



USE/FEATURES

Great for beach, park, picnics, events, shopping, deliveries, and more. No assembly required.

Folds up compactly.

Patented metal frame that will support up to 150 lbs.

Convenient accessory pockets to organize your gear.

Easily stores in trunks, garages, back seats, etc.

Pull handle and push bar.

Includes removable canopy top.

360 degree swivel front wheels.

Locking brakes on all four wheels.

Extendable handle reduces heel strike.

United States Patents



US D748,739 S US 9,145,154 B1
US D757,637 S

Europe Registered Community Design No



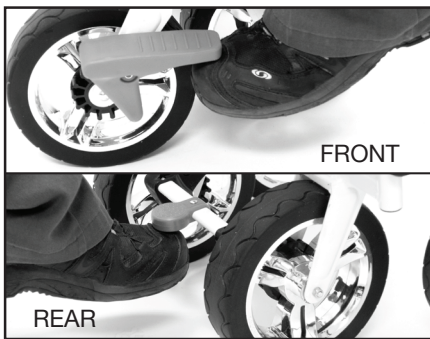
003423193-0001
003395656-0001

CARE

Use a damp cloth to clean. Do not use chemicals.

WAGON SET-UP INSTRUCTIONS

Step 1



Disengage all wheel brakes by lifting up on brake lever with hand or toes.

Step 2



Open red locking latch.

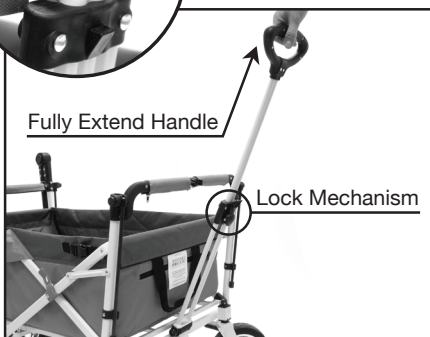
Step 3



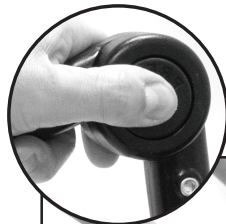
Spread the wagon frame open until it comes to a fully opened position. Use caution near moving parts to prevent pinching.



To Pull Wagon



Release handle from retaining clip and extend handle to fully extended position. You will hear a click as it locks into place.



To Push Wagon



Push large round buttons in with thumbs while lifting handle to desired height with fingers.

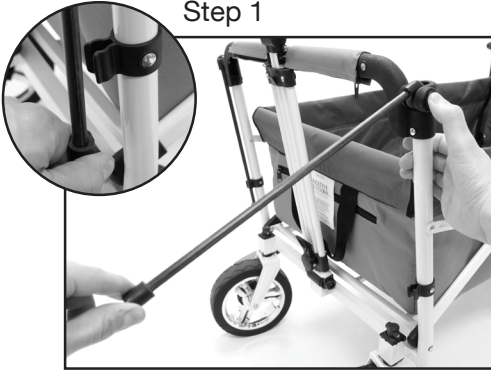
Enjoy



Your wagon is now ready for use.

OPTIONAL CANOPY SET-UP INSTRUCTIONS

Step 1



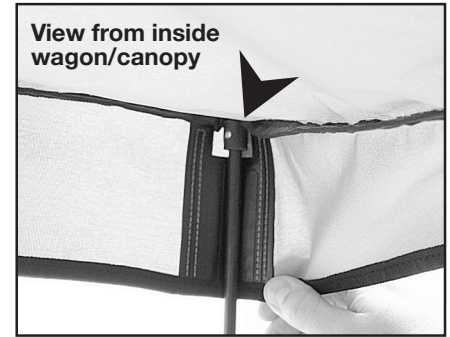
Release each of the four canopy rods from their retaining clips and, while pressing the thumb button, rotate the canopy rods to their upright vertical position and release the button to lock.

Step 2



After all four canopy rods are locked in the upright vertical position, drape the canopy over the rods aligning each corner with a rod. The resulting tension will keep the canopy taut.

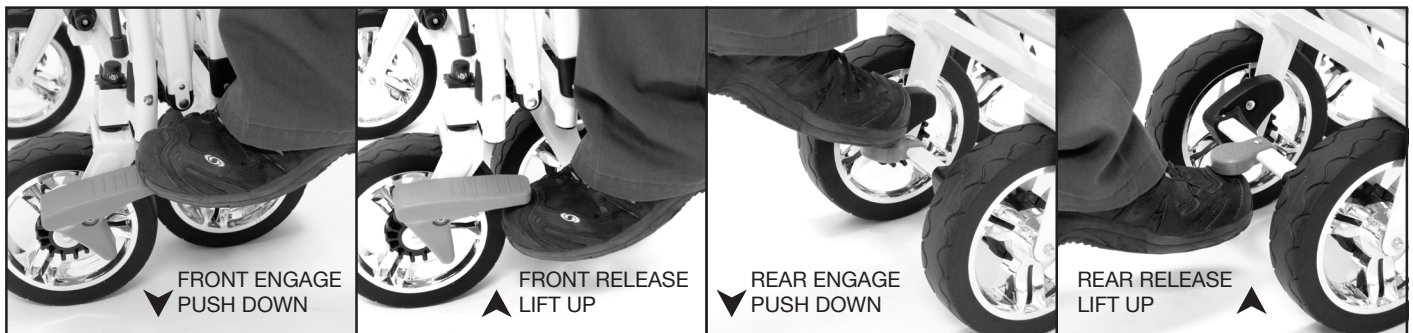
Step 3



Position the top of each canopy rod into the cut-out notch of each inside corner of the canopy to keep canopy securely installed on the wagon.

SAFETY FEATURES

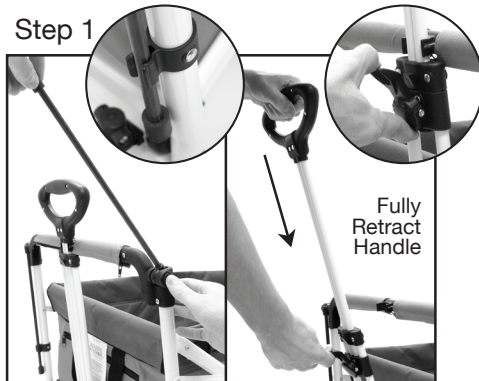
Locking Brakes



Always engage the wheel brakes when not attending to the wagon.

WAGON FOLD-UP INSTRUCTIONS

Step 1



Rotate canopy rods to down position and secure in retaining clip. Secure handle in handle retaining clip and release handle locking mechanism to fully retract handle.

Step 2



Pull straight up on toggle inside wagon to fold.

Step 3



While compressing frame in closed position, secure the red locking latch and set locking wheel brakes for storage.