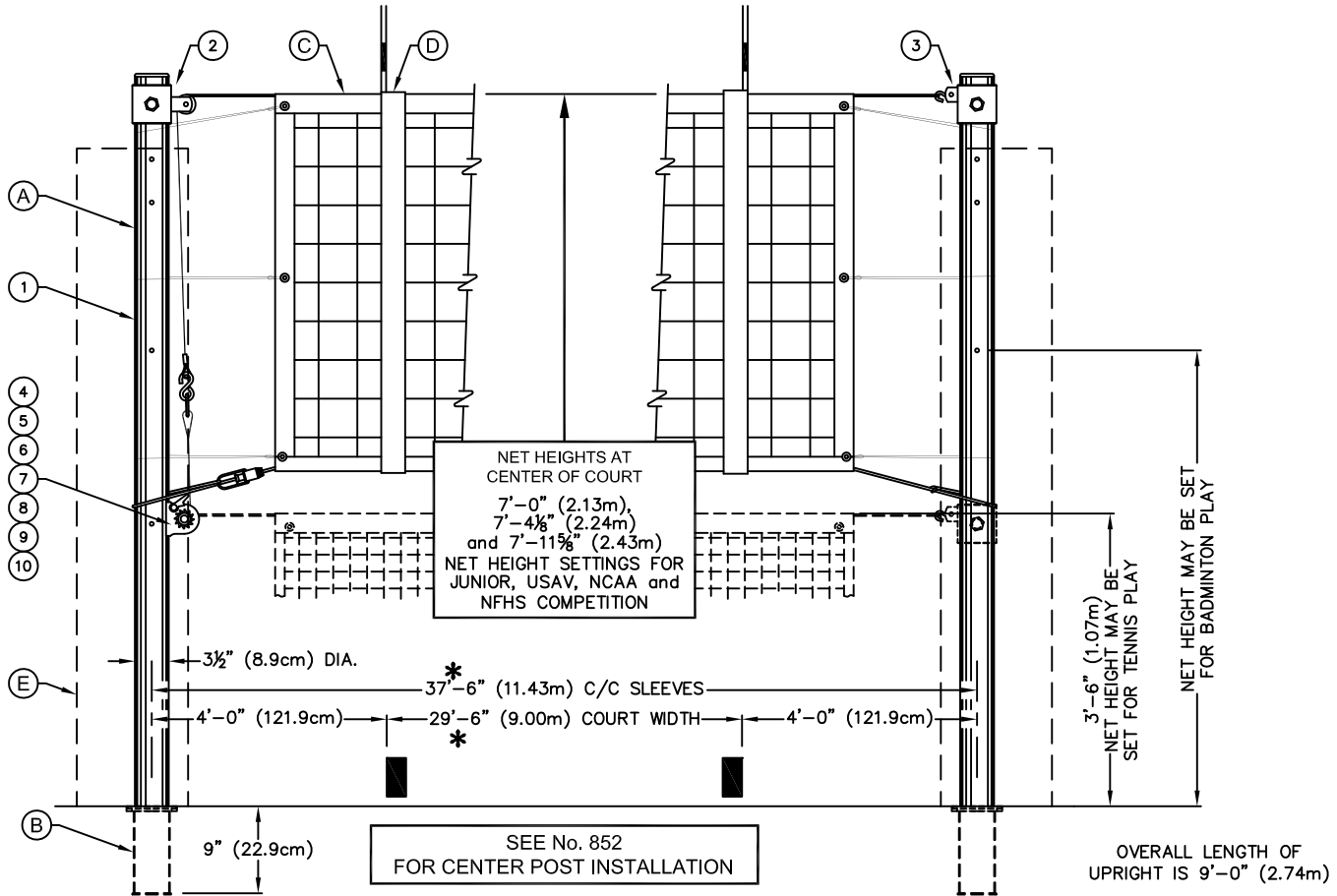


851 ECONOMY VOLLEYBALL SYSTEM

SLEEVE-TYPE 3-1/2" OD STEEL VOLLEYBALL END STANDARDS



* HIGH SCHOOLS ALSO ALLOW A 30' x 60' COURT DIMENSION. THE CENTER-TO-CENTER DIMENSION FOR SLEEVES INSTALLED ON A 30' x 60' COURT WILL BE 36'.

PARTS LIST - No. 851		
No.	QTY.	DESCRIPTION
1	2	UPRT 00209 000 UPRIGHT ASSEMBLY
2	1	SLVE 00067 001 SLEEVE WITH PULLEY
3	1	SLVE 00068 001 SLEEVE WITH NET TIE-OFF
4	1	WINH 00058 001 REEL ASSEMBLY
5	1	WINH 00027 100 CRANK FOR REEL ASSEMBLY
6	1	STAP 00015 000 STRAP ASSEMBLY w/S-HOOK
7	1	HDWE 06081 0E0 1/4" x 3/4" Lg. FL. HEAD SCREW
8	2	HDWE 02069 0E0 5/16" x 4" Lg. CARRIAGE BOLT
9	2	HDWE 04001 0E0 5/16" LOCKWASHER
10	2	HDWE 03001 0E0 5/16" HEX NUT

COLOR SELECTION	
<input type="checkbox"/> 01 - Light Blue	<input type="checkbox"/> 09 - Gray
<input type="checkbox"/> 02 - Royal Blue	<input type="checkbox"/> 10 - Maroon
<input type="checkbox"/> 03 - Red	<input type="checkbox"/> 11 - Purple
<input type="checkbox"/> 04 - White	<input type="checkbox"/> 12 - Black
<input type="checkbox"/> 05 - Orange	<input type="checkbox"/> 13 - Navy Blue
<input type="checkbox"/> 06 - Yellow Gold	<input type="checkbox"/> 14 - Kelly Green
<input type="checkbox"/> 08 - Tan	<input type="checkbox"/> 15 - Dark Green

- ___ - 851 ECONOMY VOLLEYBALL STANDARDS (PAIR)
- ___ - 851-9XX ECONOMY VOLLEYBALL STANDARDS WITH PADS (PAIR)
- ___ - 851-9XXSP ECONOMY VOLLEYBALL STANDARDS WITH GRAPHIC PADS (PAIR)

QTY	PART No.	DESCRIPTION	No.	PAGE No.
	VARIOUS	3 1/2" DIA FLOOR SLEEVE - EACH	B	VARIOUS
	02255000	VOLLEYBALL NET	C	V-2255
	00546-000	BOUNDARY MARKERS w/ ANTENNA (PAIR)	D	V-546
	02991-340	TENNIS NET - 34' x 39" (NOT SHOWN)		V-2291
	7170XX	UPRIGHT PROTECTIVE PADS (PAIR)	E	V-717
	00889-100	JUDGE'S STAND (NOT SHOWN)		V-889-1
	9931XX	PADS FOR JUDGE'S STAND (NOT SHOWN)		V-993-1



PROJECT NUMBER _____

PROJECT NAME _____

851 ECONOMY VOLLEYBALL SYSTEM

SLEEVE-TYPE 3-1/2" OD STEEL VOLLEYBALL END STANDARDS

SPECIFICATIONS

PORTER No. 851 ECONOMY VOLLEYBALL STANDARDS (PAIR)

Posts shall be of a heavy-wall 3-1/2" (8.9cm) O.D. structural steel tubing finished in a durable gray powder-coated finish.

Posts shall be 3-1/2" (8.9cm) O.D. to fit standard floor sleeves for new construction or existing floors. Specify No. 870, 872, 873 or 875 type floor sleeve.

Upper end of posts are equipped with special sliding collar devices incorporating a spring-loaded pin mechanism for instant net height settings for tennis, badminton, and three volleyball net heights - BOYS'/MEN'S 7' 11-5/8" (2.43m), GIRLS'/WOMEN'S 7' 4-1/8" (2.24m), and 12 YEAR AND UNDER 7'-0" (2.13m). Adjustable collars finished in a durable, powder-coat finish. Tensioning winch shall be of a ratchet type to hold net tension, and shall be furnished with a heavy, 1-3/4" (4.45cm) wide, high tensile nylon strap, and net attachment hardware. Nylon strap eliminates the need for the net cable to wrap on the winch drum, which could cause kinking. Winch furnished complete with removable handle to prevent unauthorized usage.

Tensioning of bottom of optional net (No. 02255-000 Net) shall be accomplished by means of a "Quik-Line," spring-loaded, pressure type locking line fastener (furnished with net) secured to the bottom rope.

Standards shall consist of one reel post and one end post. (For multiple court usage, specify additional No. 852 center standards as required.)

NET SELECTION

Specify No. 02255-000 net for volleyball application.

Specify No. 2235 tennis net if 42'-0" sleeve centers are used.

Specify No. 02991-340 tennis net if 35'-6" sleeve centers are used.

Specify No. 2236-110 net for badminton application.

WARRANTY

Volleyball system furnished with the following warranty:

Uprights – 10 year limited warranty

Winch – 1 year limited warranty