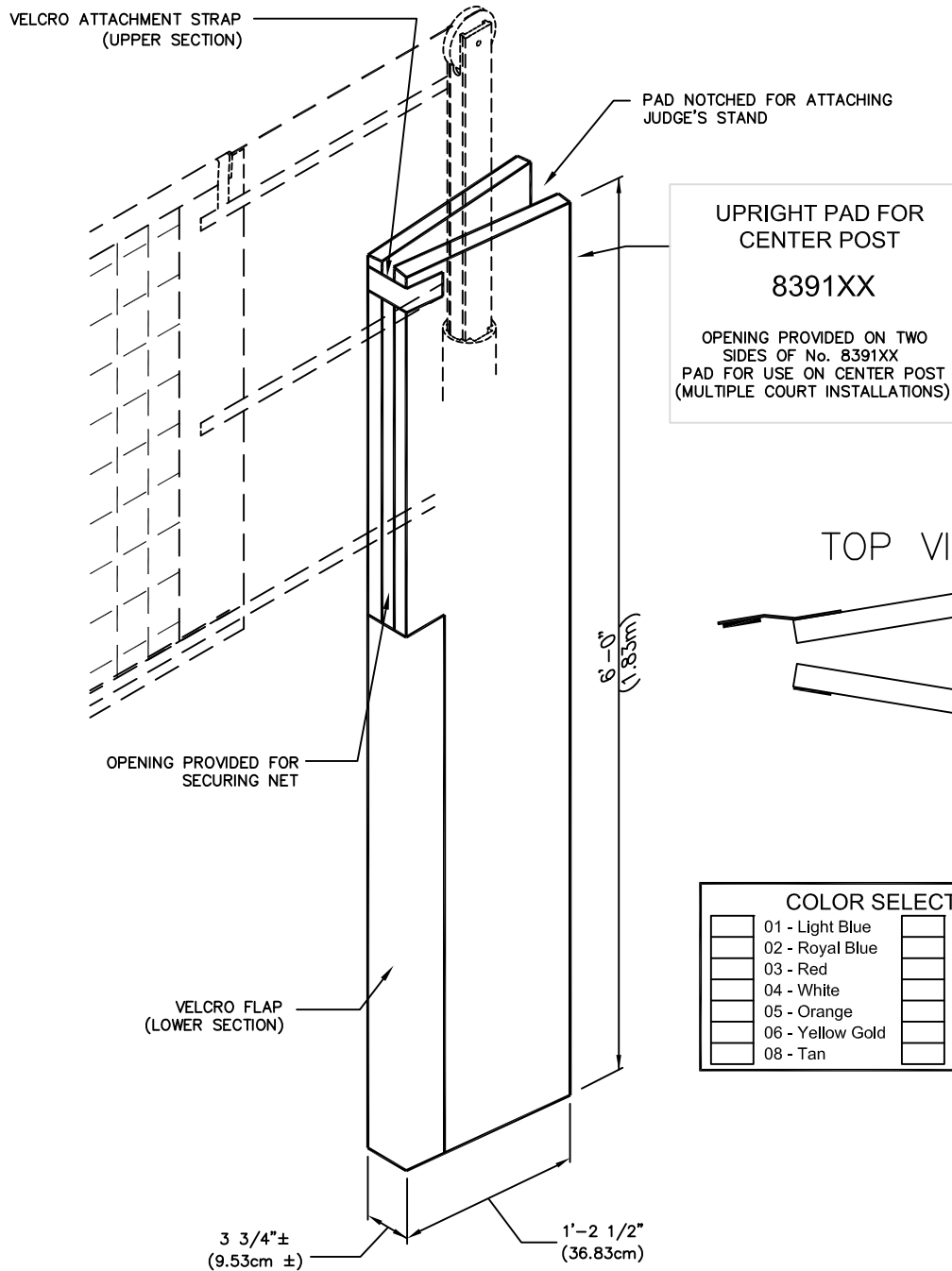


# 8390XX - VOLLEYBALL UPRIGHT PADS

## 8390XX AND 8391XX PROTECTIVE PADS



**Porter**  
 WWW.PORTERATHLETIC.COM/FACILITY

VOLLEYBALL SPECIFICATION SHEET

V-839

- \_\_\_\_\_ – 8390XX PAIR OF VOLLEYBALL UPRIGHT PADS - SPECIFY COLOR
- \_\_\_\_\_ – 8391XX UPRIGHT PAD FOR CENTER POST (EACH) - SPECIFY COLOR
- \_\_\_\_\_ – 8390XXSP PAIR OF VOLLEYBALL UPRIGHT GRAPHIC PADS - SPECIFY COLOR
- \_\_\_\_\_ – 8391XXSP UPRIGHT GRAPHIC PAD FOR CENTER POST (EACH) - SPECIFY COLOR

**Porter**<sup>®</sup>

PROJECT NUMBER \_\_\_\_\_

PROJECT NAME \_\_\_\_\_

# 8390XX - VOLLEYBALL UPRIGHT PADS

8390XX AND 8391XX PROTECTIVE PADS

## SPECIFICATIONS

### PORTER No. 8390XX VOLLEYBALL PROTECTIVE PADS (PAIR)

#### RECOMMENDED FOR USE ON ALL PORTER SLEEVE-TYPE VOLLEYBALL SYSTEMS

Pads (one pair) shall be fabricated with a firm, 1-1/2" (3.81cm) thick closed cell protective polyethylene foam interior covered in a durable, vinyl coated polyester reinforced cover material.

Each pad shall be tailored with hook and loop attachments to neatly fold around upright, winch, and all net tensioning hardware.

Installed on uprights, pads shall offer a narrow profile to offer maximum visibility for judges and spectators.

Front side of each pad shall be furnished with a 1" x 29" (2.54cm x 73.7cm) opening at the top end for attaching the pad after the net has been properly installed and tensioned.

Pads shall extend to a height of 6'-0" (1.83m) above the floor to meet or exceed the latest requirements as prescribed by the USAV, NFHS, and NCAA for player protection and safety.

### PORTER No. 8391XX VOLLEYBALL CENTER PROTECTIVE PADS (EACH)

#### RECOMMENDED FOR USE ON ALL PORTER SLEEVE-TYPE CENTER SYSTEMS

Same specifications as above except single pad shall have an opening on two sides for attaching net from both sides.

PORTER  
WWW.PORTERATHLETIC.COM/FACILITY

VOLLEYBALL SPECIFICATION SHEET

V-839