

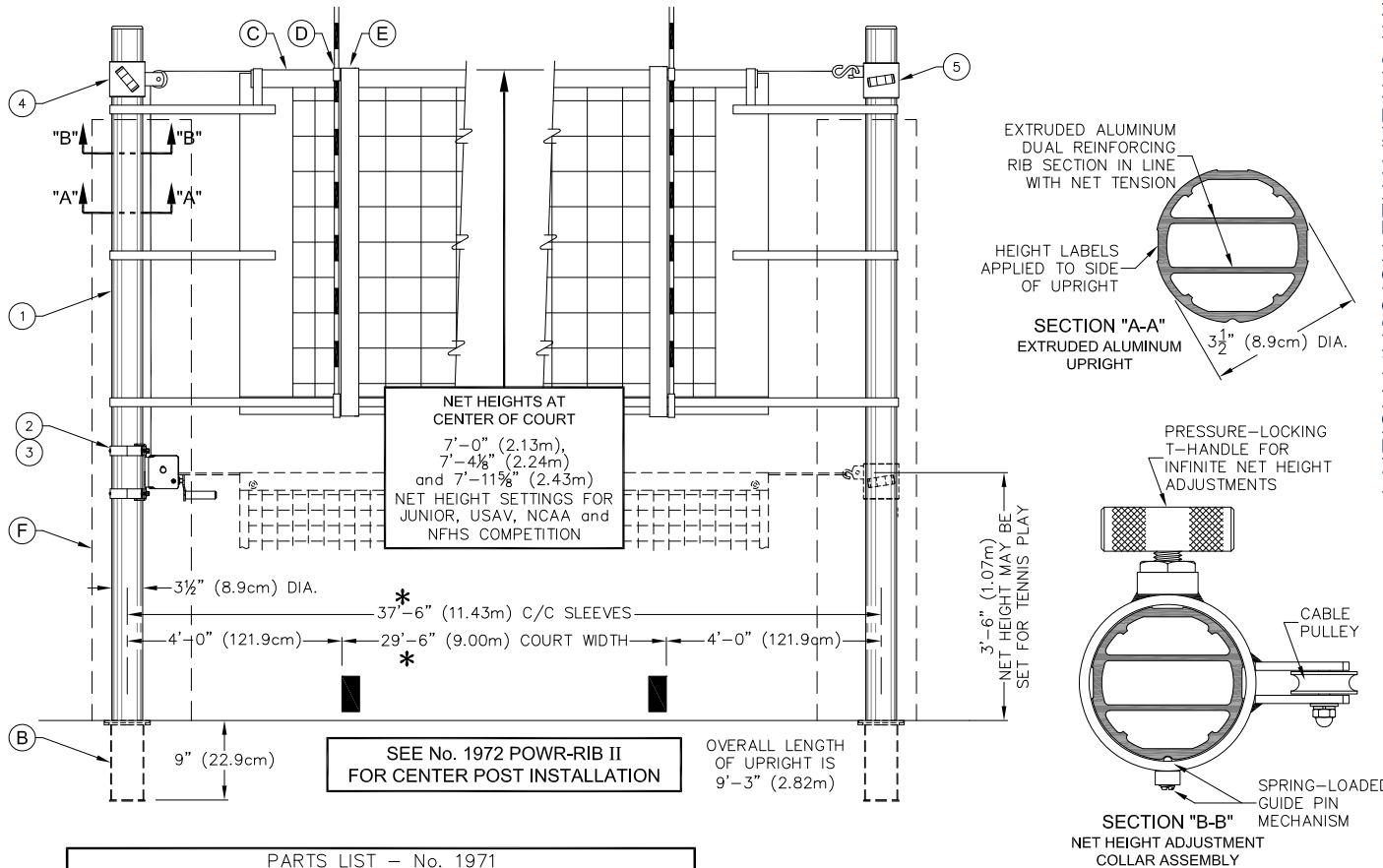
# 1971 POWR-RIB II VOLLEYBALL SYSTEM

## SLEEVE-TYPE 3 1/2" OD ALUMINUM VOLLEYBALL END STANDARDS

**Porter**  
 WWW.PORTERATHLETIC.COM/FACILITY

VOLLEYBALL SPECIFICATION SHEET

V-1971



PARTS LIST - No. 1971			
No.	QTY.	DESCRIPTION	
1	2	UPRT 00296 000	UPRIGHT ASSEMBLY
2	1	WINH 00113	POWR-SELECT WINCH
3	1	WINH 00114	CRANK FOR POWR-SELECT WINCH
4	1	SLVE 00070 001	SLEEVE WITH PULLEY
5	1	SLVE 00071 001	SLEEVE WITH NET TIE-OFF
6	2	LABL 00167 000	HEIGHT LABEL - 7'-11 5/8"
7	2	LABL 00168 000	HEIGHT LABEL - 7'-4 1/8"
8	2	LABL 00169 001	HEIGHT LABEL - 7'-0"
9	2	LABL 00170 000	HEIGHT LABEL - BADMINTON

\* HIGH SCHOOLS ALSO ALLOW  
 A 30' x 60' COURT DIMENSION.  
 THE CENTER-TO-CENTER  
 DIMENSION FOR SLEEVES  
 INSTALLED ON A 30' x 60'  
 COURT WILL BE 38'.

- \_\_\_\_\_ - 1971 POWR-RIB II VOLLEYBALL STANDARDS (PAIR)
- \_\_\_\_\_ - 19719XX POWR-RIB II VOLLEYBALL STANDARDS WITH PADS (PAIR)
- \_\_\_\_\_ - 19719XXSP POWR-RIB II VOLLEYBALL STANDARDS WITH GRAPHIC PADS (PAIR)

QTY	PART No.	DESCRIPTION	No.	PAGE No.
	VARIOUS	3 1/2" DIA FLOOR SLEEVE (EACH)	B	VARIOUS
	2295	UNIVERSAL VOLLEYBALL NET (EACH)	C	V-2295
	2297	POWR-SELECT NET ANTENNA (PAIR)	D	V-2297
	00546000	BOUNDARY MARKERS w/ ANTENNA (PAIR)	E	V-546
	8390XX	UPRIGHT PROTECTIVE PADS (PAIR)	F	V-839
	02991340	TENNIS NET - 34' x 39" (NOT SHOWN)		V-2991
	00889100	JUDGE'S STAND (NOT SHOWN)		V-889-1
	9931XX	PADS FOR JUDGE'S STAND (NOT SHOWN)		V-993-1



PROJECT NUMBER \_\_\_\_\_

PROJECT NAME \_\_\_\_\_

# 1971 POWR-RIB II VOLLEYBALL SYSTEM

SLEEVE-TYPE 3 1/2" OD ALUMINUM VOLLEYBALL END STANDARDS

## SPECIFICATIONS

### PORTER No. 1971 POWR-RIB II VOLLEYBALL STANDARDS (PAIR)

Posts shall be provided in a high strength (6063T6), lightweight aluminum alloy, designed with dual internal reinforcing ribs to provide maximum rigidity and minimum deflection. Posts to be finished in a durable clear anodized finish. Both ends of upright posts shall be fitted with a special molded, composite type cap to protect finished floors when moving standards.

Uprights shall be 3-1/2" (8.9cm) O.D. to fit standard floor sleeves for new construction or existing floors. Specify No. 870 or 872 type floor sleeve.

Upright posts shall be equipped with special sliding collar devices incorporating a spring-loaded guide pin and positive pressure locking T-handle mechanism for instant net height settings for tennis, badminton and volleyball, to meet all USAV, NCAA and NFHS requirements for competition. Posts shall be furnished with height marking labels for BOYS'/MEN'S height setting of 7' 11-5/8" (2.43m), GIRLS'/WOMEN'S height setting of 7' 4-1/8" (2.24m), 12 YEAR AND UNDER height setting of 7'-0" (2.13m), and BADMINTON height setting of 5'-0" (1.52m).

Adjustable collar assemblies shall be positioned on a vertical axis by means of an external groove in the extruded aluminum upright, which is engaged by a spring-loaded ball/pin mechanism to prevent rotational movement of the collar. A pressure locking, threaded T-handle assembly shall be located on the opposite side of the collar assembly and shall tighten securely against a flat, extruded channel indent on the upright post for a positive locking system.

Tensioning reel shall be a vertical lift, worm gear winch with steel frame. Frame construction shall be of interlocking steel for high rigidity and precise alignment, semi enclosed for safety, and powder coated for corrosion resistance. Self-locking worm drive will prevent snap back or loss of tension. Net shall attach directly to the winch eliminating the need for straps.

Standards shall consist of one reel post and one end post. (For multiple court usage, specify additional No.1972 Powr-Rib II center standards as required).

#### **NET SELECTION**

Specify No. 2235 tennis net if 42'-0" sleeve centers are used.

Specify No. 02991340 tennis net if 35'-6" sleeve centers are used.

Specify No. 2236110 net for badminton application.

#### **WARRANTY**

Volleyball system furnished with the following warranty:

Uprights – 10 year limited warranty

Winch – 1 year limited warranty