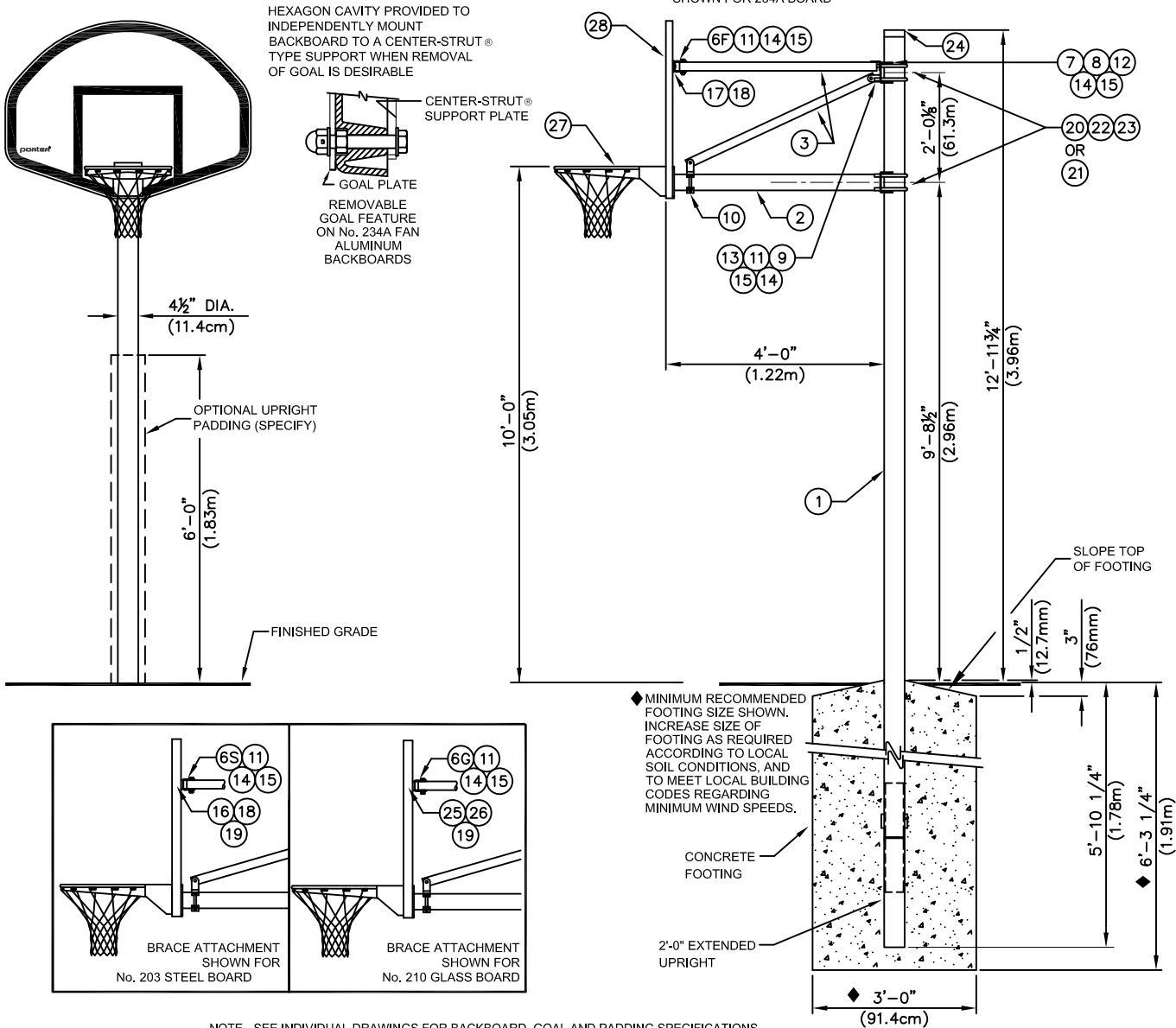


# 164FL-SDXXX - SUPER DUTY OUTDOOR SYSTEM

## 4' OFFSET VERTICAL 4-1/2" POST WITH FULL BRACING AND 2'-0" EXTENDED POST



NOTE - SEE INDIVIDUAL DRAWINGS FOR BACKBOARD, GOAL AND PADDING SPECIFICATIONS

PARTS LIST		PARTS LIST	
No.	QTY.	No.	QTY.
1	1	UPRT 00351	OGO 2' EXTENDED UPRIGHT: 4 1/2" Dia. GALVANIZED
2	1	EXTN 00050	OGO EXTENSION ARM: 3 1/2" Dia. ZINC FLO-COAT
3	3	TUBR 00460	OGO BRACE TUBE: 1 1/2" Dia. ZINC FLO-COAT
6F	2	BRCE 00068	OGO BRACE CLAMP: FAN BOARDS
2	2	BRCE 00078	OGO BRACE CLAMP: GLASS BOARDS
6S	2	BRCE 00088	OGO BRACE CLAMP: RECT. STEEL BOARDS
7	1	ANGL 00119	OGO BRACE ANGLE
8	1	CLMP 00044	OGO MAST CLAMP
9	1	HING 00009	OGO HINGE
10	1	XHNG 3010P	OGO BRACE HANGER ASSEMBLY
11	3	HDWE 01140	OEO 1/2" x 3" Lg. HEX HD CAP SCREW (Gr.5)
12	2	HDWE 01166	OEO 1/2" x 2 1/4" Lg. HEX HD CAP SCREW (Gr.5)
13	1	HDWE 02055	OEO 1/2" x 1 1/4" Lg. CARRIAGE BOLT (Gr.5)
14	6	HDWE 04003	OEO 1/2" LOCKWASHER
15	6	HDWE 03003	OEO 1/2" HEX NUT
16	2	HDWE 01208	OEO 3/8" x 2 1/2" Lg. HEX HD CAP SCREW (Gr.5)
17	4	HDWE 01124	OEO 3/8" x 1" Lg. HEX HD CAP SCREW (Gr.5)
18	4	HDWE 04002	OEO 3/8" LOCKWASHER
19	2	HDWE 03002	OEO 3/8" HEX NUT
20	4	UBOT 00011	OEO 5/8" U-BOLT: 4 1/2" Dia. Upright
21	4	UBOT 00012	OEO 5/8" U-BOLT: 5 3/8" Dia. Upright
22	8	HDWE 04006	OEO 5/8" LOCKWASHER
23	8	HDWE 03012	OEO 5/8" HEX NUT
24	1	PCAP 00027	OEO PIPE CAP
25	4	HDWE 05017	1/2" SAE FLAT WASHER
26	2	HDWE 01164	OEO 1/2" x 2 1/4" Lg. HEX HD CAP SCREW (Gr. 5)
27	1	*SEE PART MATRIX* GOAL	
28	1	*SEE PART MATRIX* BACKBOARD	

BOARD	GOAL	00251H00	236H00
234A		340	350
210		440	450
203		740	750

## 164FL-SDXXX - 4 1/2" DIA VERTICAL POLE SUPER DUTY OUTDOOR SYSTEM 00069-0XX - UPRIGHT PROTECTIVE PADDING



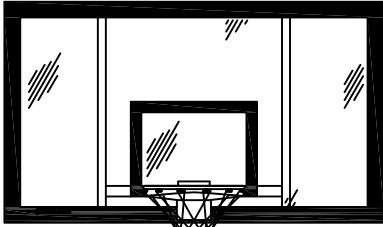
PROJECT NUMBER

PROJECT NAME

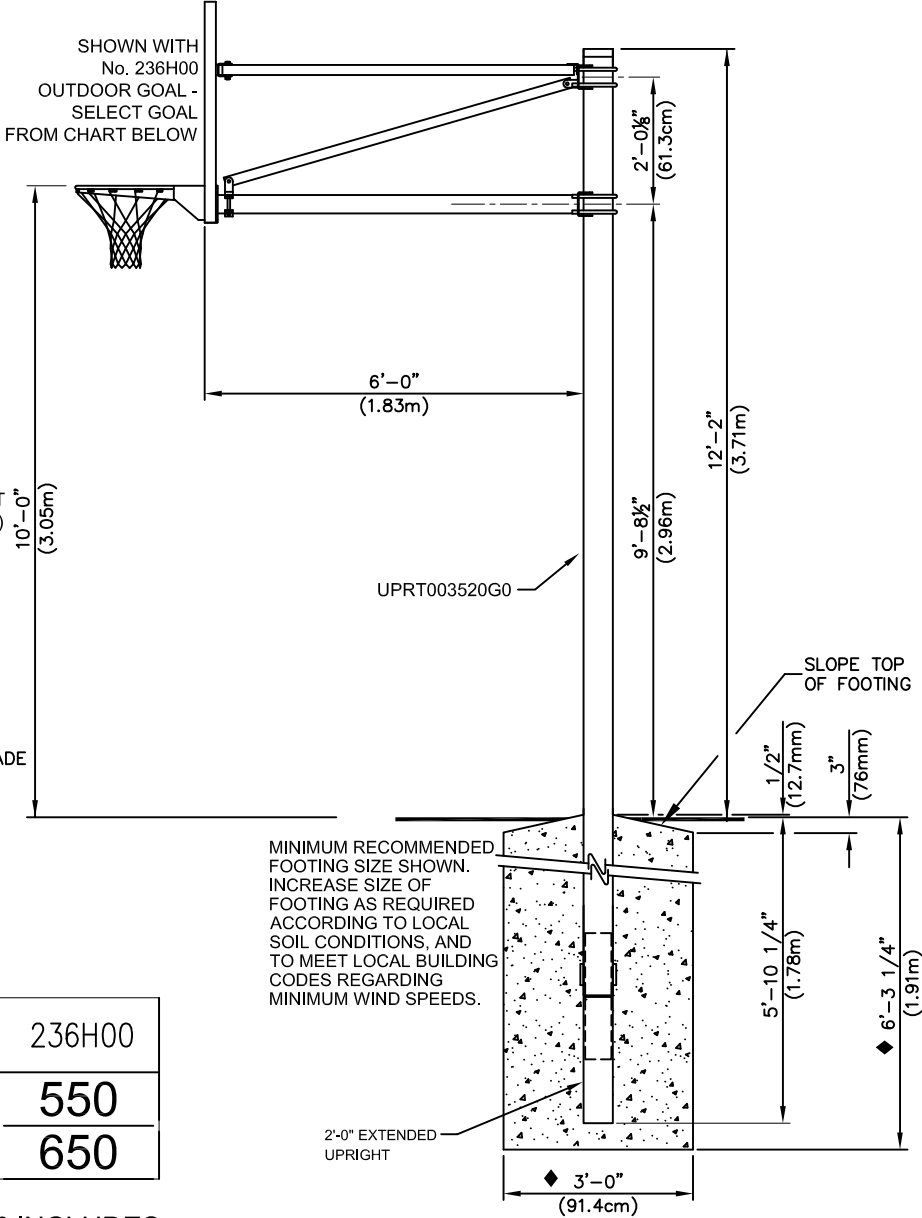
# 166FL-SDXXX - SUPER DUTY OUTDOOR SYSTEM

## 6' OFFSET VERTICAL 5-9/16" POST WITH FULL BRACING AND 2'-0" EXTENDED POST

SHOWN WITH No. 209 GLASS BACKBOARD -  
SELECT BOARD FROM CHART BELOW.



SHOWN WITH  
No. 236H00  
OUTDOOR GOAL -  
SELECT GOAL  
FROM CHART BELOW



NOTE - SEE INDIVIDUAL DRAWINGS FOR BACKBOARD, GOAL AND PADDING SPECIFICATIONS

BOARD \ GOAL	00251H00	236H00
207	<b>540</b>	<b>550</b>
209	<b>640</b>	<b>650</b>

EXAMPLE: No. 166FL-SD540 INCLUDES 207 STEEL BACKBOARD AND 00251H00 HEAVY-DUTY GOAL

\_\_\_\_\_ 166FL-SDXXX - 5 9/16" DIA VERTICAL POLE SUPER DUTY OUTDOOR SYSTEM  
\_\_\_\_\_ 00187-0XX - UPRIGHT PROTECTIVE PADDING



PROJECT NUMBER \_\_\_\_\_

PROJECT NAME \_\_\_\_\_

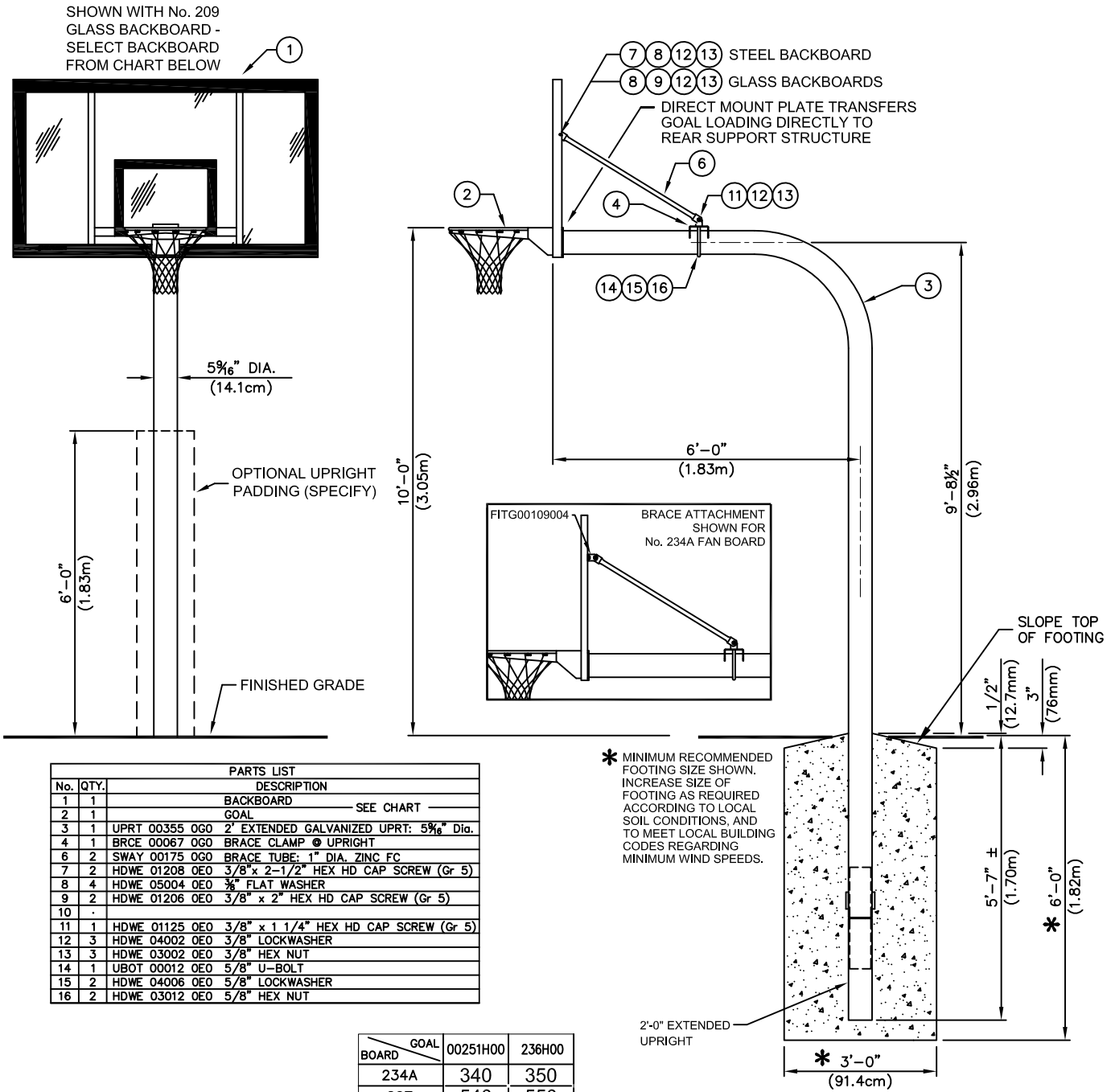
# 176FL-SDXXX - SUPER DUTY OUTDOOR SYSTEM

6' OFFSET GOOSENECK 5-9/16" POST  
WITH FULL BRACING AND 2'-0" EXTENDED POST

**Porter**  
WWW.PORTERATHLETIC.COM/FACILITY

BASKETBALL SPECIFICATION SHEET

R-FLSD



No.	QTY.	DESCRIPTION
1	1	BACKBOARD SEE CHART
2	1	GOAL
3	1	UPRT 00355 OGO 2' EXTENDED GALVANIZED UPRT: 5 9/16" Dia.
4	1	BRCE 00067 OGO BRACE CLAMP @ UPRIGHT
6	2	SWAY 00175 OGO BRACE TUBE: 1" DIA. ZINC FC
7	2	HDWE 01208 OEO 3/8" x 2-1/2" HEX HD CAP SCREW (Gr 5)
8	4	HDWE 05004 OEO 3/8" FLAT WASHER
9	2	HDWE 01206 OEO 3/8" x 2" HEX HD CAP SCREW (Gr 5)
10	-	
11	1	HDWE 01125 OEO 3/8" x 1 1/4" HEX HD CAP SCREW (Gr 5)
12	3	HDWE 04002 OEO 3/8" LOCKWASHER
13	3	HDWE 03002 OEO 3/8" HEX NUT
14	1	UBOT 00012 OEO 5/8" U-BOLT
15	2	HDWE 04006 OEO 5/8" LOCKWASHER
16	2	HDWE 03012 OEO 5/8" HEX NUT

\* MINIMUM RECOMMENDED FOOTING SIZE SHOWN. INCREASE SIZE OF FOOTING AS REQUIRED ACCORDING TO LOCAL SOIL CONDITIONS, AND TO MEET LOCAL BUILDING CODES REGARDING MINIMUM WIND SPEEDS.

BOARD	GOAL	00251H00	236H00
234A		340	350
207		540	550
209		640	650

176FL-SDXXX - 5 9/16" DIA GOOSENECK SUPER DUTY OUTDOOR SYSTEM

00187-0XX - UPRIGHT PROTECTIVE PADDING

**Porter**

PROJECT NUMBER

PROJECT NAME

# SUPER DUTY OUTDOOR SYSTEM

OUTDOOR VERTICAL AND GOOSENECK SYSTEMS  
WITH FULL BRACING AND 2'-0" EXTENDED POST

## SPECIFICATIONS

### PORTER No. 164FL-SDXXX SUPER DUTY OUTDOOR SYSTEM 4' OFFSET VERTICAL 4-1/2" POST

Upright support shall be 4-1/2" (11.43cm) O.D. heavy-wall galvanized steel pipe capped at top end. Anchor lugs shall be provided on lower end for securing into a concrete footing. Upright shall extend an extra 2'-0" for a deeper footing in accordance with California and Florida specifications.

Backboard shall be supported 4'-0" (1.22m) in front of center upright support by means of special horizontal support assemblies for ease of installing goal heights at any location between 8'-0" (2.44m) and 10'-0" (3.05m). Lower horizontal support assembly shall be fabricated from 3-1/2" O.D. (8.89cm) O.D. heavy-wall tubing equipped with a special steel, die formed fitting for attachment to the upright support. Lower horizontal support assembly shall extend to a mounting plate directly behind the goal mounting holes to transfer all goal impact loading directly to the rear support structure to eliminate stress on the backboards. Lower horizontal support assembly shall be supported directly behind the goal mounting plates by means of a diagonally mounted heavy-wall 1-7/8" (4.76cm) O.D. steel tube extending to the upper end of the upright support.

Upper part of the backboard shall be further braced by dual, heavy-wall 1-7/8" (4.76cm) O.D. steel tubes extending outward from the upper end of the center upright support into special hinge fittings mounted on 2'-11" (88.0cm) centers on the backside of the backboards.

### PORTER No. 166FL-SDXXX SUPER DUTY OUTDOOR SYSTEM 6' OFFSET VERTICAL 5-9/16" POST

Same specification as No. 164FL-SDXXX above except offset shall be 6' and upright post shall be 5-9/16" O.D.

### PORTER No. 176FL-SDXXX SUPER DUTY OUTDOOR SYSTEM 6' OFFSET GOOSENECK 5-9/16" POST

Face of backboard shall be 6'-0" (1.83m) extended from the centerline of the formed upright support. Upright gooseneck support pole shall be formed from 5-9/16" O.D. (14.1cm), schedule 40, galvanized steel pipe. Vertical section shall extend 5'-7" (1.70m) into a concrete footing in accordance with California and Florida specifications and shall be secured by welded anchor lugs. Horizontal section shall be fabricated with a special, slotted mounting plate to level the backboard and goal. Bolts from the front mounted goal shall mount directly through the backboard and into the Center-Strut® mounting plate to eliminate any strain on the backboard should a player hang on the front mounted goal.

Backboard shall be supported by two, 1" (2.54mm) O.D., 14ga. wall steel sway braces that terminate on the horizontal support tube approximately 32" behind the backboard. Diagonal sway brace tubes shall be secured to the horizontal support tube by means of a heavy steel brace clamp, which is adjustable to plumb backboard. Sway brace tubes have a zinc Flo-Coat finish.